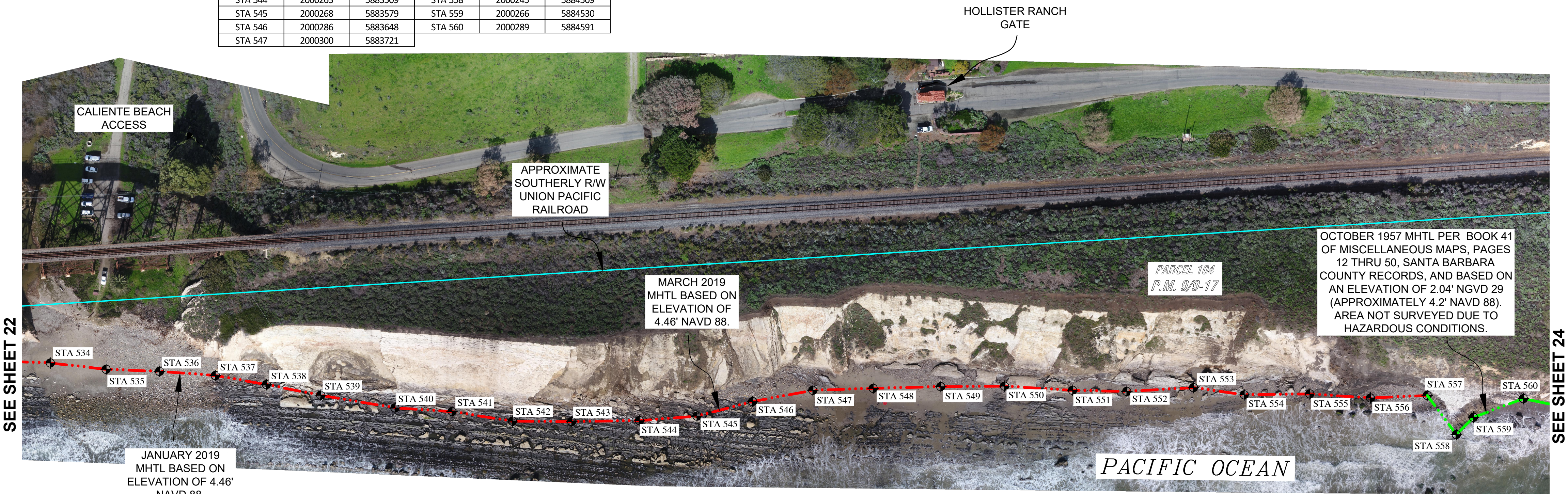


MHTL STATION COORDINATES					
STATION #	NORTHING	EASTING	STATION #	NORTHING	EASTING
STA 534	2000333	5882788	STA 548	2000302	5883795
STA 535	2000325	5882857	STA 549	2000304	5883878
STA 536	2000323	5882922	STA 550	2000305	5883956
STA 537	2000318	5882990	STA 551	2000300	5884039
STA 538	2000307	5883053	STA 552	2000298	5884105
STA 539	2000294	5883119	STA 553	2000303	5884187
STA 540	2000278	5883210	STA 554	2000294	5884249
STA 541	2000274	5883280	STA 555	2000295	5884329
STA 542	2000262	5883354	STA 556	2000290	5884404
STA 543	2000261	5883426	STA 557	2000293	5884473
STA 544	2000263	5883509	STA 558	2000245	5884509
STA 545	2000268	5883579	STA 559	2000266	5884530
STA 546	2000286	5883648	STA 560	2000289	5884591
STA 547	2000300	5883721			

NOTE: MHTL STATIONS 534 THRU 539 SURVEYED JANUARY 2019. STATIONS 540 THRU 557 SURVEYED MARCH 2019. STATIONS 558 THRU 560 BASED ON OCTOBER 1957 MHTL DEPICTED ON BOOK 41 OF MISCELLANEOUS MAPS PAGES 12 THRU 50, SANTA BARBARA COUNTY RECORDS.



LEGEND

- JANUARY 2019/ MARCH 2019 MEAN HIGH TIDE LINE (MHTL) PER FIELD SURVEYS PERFORMED BY CSLC STAFF JANUARY 29, 30, & MARCH 18, 2019 AND BASED ON AN ELEVATION OF 4.46' NAVD 88.
- OCTOBER 1957 MHTL PER BOOK 41 OF MISCELLANEOUS MAPS PAGES 12 THRU 50, SANTA BARBARA COUNTY RECORDS, AND BASED ON AN ELEVATION OF 2.04' NGVD 29 (APPROXIMATELY 4.2' NAVD 88).
- APPROXIMATE SOUTHERLY R/W OF UNION PACIFIC RAILROAD. BASED ON RECORD INFORMATION DEPICTED ON SANTA BARBARA COUNTY PARCEL MAPS FILED IN BOOK 8 OF PARCEL MAPS AT PAGES 45 -57 AND BOOK 9 OF PARCEL MAPS AT PAGES 9 - 17.
- MHTL STATION POINT

NOTES

- THE UNITS FOR ALL COORDINATES AS SHOWN ARE US SURVEY FEET, UNLESS OTHERWISE NOTED.
- AERIAL PHOTOGRAPHY PER CSLC UAV IMAGERY OBTAINED DECEMBER 18 THRU 20, 2018, AND JANUARY 29 THRU 31, 2019.
- THIS PLAT HAS NOT BEEN APPROVED BY THE STATE LANDS COMMISSION AND DOES NOT CONSTITUTE AN OFFICIAL PLAT OF SUCH COMMISSION. NOR DOES IT ESTABLISH THE BOUNDARY LINES OR LIMITATIONS OF ANY STATE-OWNED LANDS DEPICTED HEREON.

SURVEY OF THE
MEAN HIGH TIDE LINE
DECEMBER 4, 5, 18, 19, & 20, 2018,
JANUARY 29, 30, 31, AND
MARCH 18, 2019
HOLLISTER RANCH
SANTA BARBARA COUNTY

CALIFORNIA STATE
LANDS COMMISSION



DRAWING NAME:	FILE NO.:	SHEET 23 23 OF 24
SD20180809-SH21-24.DWG	SD20180809.1	
DRAWN BY: JOSEPH PORTER, PLS 8266	CHECKED BY:	
DATE: 4/4/19	SCALE: 1"=80'	