

ISLANDS

Inventory of Ungranted Tidelands SURVEY PRIORITY STUDY

APPENDIX C DATA SUMMARIES

RIGHT TO PASS
BY PERMISSION AND
SUBJECT TO CONTROL
OF OWNER
Sec. 1008 Civil Code
SANTA BARBARA BELTAOLIE

State of California
State Lands Commission

1981

APPENDIX C

INVENTORY OF UNGRANTED TIDELANDS
SURVEY PRIORITY STUDY

ISLANDS
DATA SUMMARIES

THESE APPENDICES ARE ONLY APPURTENANT TO THE MAIN REPORT
AND REPRESENT ONLY A FRACTION OF THE TOTAL DATA.

PREPARED BY THE STAFF OF THE
CALIFORNIA STATE LANDS COMMISSION
IN RESPONSE TO CHAPTER 706, STATUTES OF 1975

APPENDIX C

INTRODUCTION

A data summary has been prepared for each of the coastal counties of California and for the offshore islands. These summaries are attached as Appendix C, to the Report to the Legislature of the Inventory of Ungranted Tidelands. The inventory and the report were mandated by Public Resources Code Sections 6331 et seq.

The Tidelands Inventory program of the California State Lands Commission has, as its initial objective, the gathering and analyzing of data sufficient to enable the Commission staff to rationally plan a long-term boundary program for ungranted State-owned tidelands.

Analysis of the data summarized here has been limited to that level required to assign priorities to the various regions of the California coast for further, more in-depth study, which will lead toward actual mapping of State ownership.

This summary is limited in scope to the open seacoast of the State. Bays, rivers, estuaries, and lagoons will be covered in a later report. It is further limited to lands not granted in trust to other public agencies by the California Legislature.

Determinations resulting from an analysis of the data gathered were made solely with a view to establishing priorities, and should not be taken as an official position by either the Commission or Commission staff. For example, certain observations about possible artificial conditions at various sites have been made. These observations were based upon a preliminary examination of direct evidence (e.g., airphotos) of either current or historical artificial structures at or near the particular site. More in-depth investigations may well disclose other, more remote, artificial conditions at the site, which may affect the location of the boundary of State ownership.

TABLE OF CONTENTS

MAP INDEXES

YELLOW PAGES

The base map is a composite of several different map scales, and are reduced to show the islands on one sheet. The map does not show the true position or scale. Summary maps are identified by page number.

SUMMARY MAPS

WHITE PAGES

The base maps for these pictorial summaries are various county assessors plats and U.S. Geological Survey 7 $\frac{1}{2}$ minute "quad" sheets. No maps were produced for the Farallon or Anacapa islands. Shown on these maps are the parcels selected for study, artificial features, the limits of publicly-owned land, and pertinent maps.

DATA SUMMARIES, BY PARCEL

PINK PAGES

These are computer print-outs which summarize the data accumulated during the inventory for each study parcel. The last column provides a means for the State Lands Commission's staff to categorize the types and degrees. The information listed in these print-outs has been summarized. Consequently, what is shown may not be the exact wording or condition existing. Where there is more than one study parcel per island, they are listed counterclockwise around each island by page/line number. This two-part number was assigned during the inventory. The first portion of the number is the Summary Map page number as assigned by staff. The second part is the individual parcel number given to the selected parcels in a consecutive counterclockwise direction around the island. The page/line number is used throughout the inventory files to identify each inventory parcel. It is arbitrary, and should not be confused with assessor's parcel numbers. (Following the Data Summaries print-outs is a cross-reference from assessor's parcel numbers to the page/line numbers).

INVENTORY FILES

GREEN PAGES

As required by the Public Resources Code, data obtained during the inventory are filed and are available for public inspection. This section provides a guide to what is obtainable and where to find it.

While every effort has been made to make the summarized data as current and reliable as possible, neither the State Lands Commission nor its staff assumes any liability for the accuracy of the data.

STATE BUREAU

STATE BUREAU

The data were prepared by the State Lands Commission and are intended to provide a general overview of the State Lands Commission's activities. The data are not intended to be used for any other purpose.

STATE BUREAU

STATE BUREAU

The data were prepared by the State Lands Commission and are intended to provide a general overview of the State Lands Commission's activities. The data are not intended to be used for any other purpose.

STATE BUREAU

STATE BUREAU

The data were prepared by the State Lands Commission and are intended to provide a general overview of the State Lands Commission's activities. The data are not intended to be used for any other purpose.

STATE BUREAU

STATE BUREAU

The data were prepared by the State Lands Commission and are intended to provide a general overview of the State Lands Commission's activities. The data are not intended to be used for any other purpose.

**INDEX
MAPS**



SAN MIGUEL ISLAND
SANTA BARBARA CO.



SANTA ROSA ISLAND
SANTA BARBARA CO.



SANTA CRUZ ISLAND
SANTA BARBARA CO.



Scale 1:250,000



SAN CLEMENTE ISLAND
LOS ANGELES CO.



SAN NICOLAS ISLAND
VENTURA CO.



ANACAPA ISLAND
VENTURA CO.
NO SUMMARY MAPS



SANTA BARBARA ISLAND
SANTA BARBARA CO.



SANTA CATALINA ISLAND
LOS ANGELES CO.



FARALLON ISLANDS
SAN FRANCISCO CO.
NO SUMMARY MAPS

LEGEND:
 - - - - - SUMMARY MAP LIMITS
 - - - - - GRANTED LANDS LIMITS
 ● SHORELINE MILEAGE POINT
 NOTE: LOCATIONS ARE APPROXIMATE.

INDEX MAP

INVENTORY OF UNGRANTED TIDELANDS
STATE OF CALIFORNIA STATE LANDS COMMISSION

ISLANDS
SUMMARY MAPS 1 - 19

MAP NUMBER 130

SUMMARY MAP LEGEND

This number, located just to the right of the summary map legend
 8-11-88
 8-11-88
 8-11-88
 8-11-88

This number, located just to the right of the summary map legend
 8-11-88
 8-11-88
 8-11-88
 8-11-88









SUMMARY MAPS

This number, located just to the right of the summary map legend
 8-11-88
 8-11-88
 8-11-88
 8-11-88

This number, located just to the right of the summary map legend
 8-11-88
 8-11-88
 8-11-88
 8-11-88

(1) Most maps listed in the Summary Maps are filed in the State Lands Commission records in the order listed by the listing agency. Some listing agencies also list them in order of date. However, in some cases, the listing agencies have not yet filed all of the maps listed in the Summary Maps. As a result, some maps listed in the Summary Maps may not be available for public inspection. However, they are included in the Summary Maps.

SUMMARY MAP LEGEND

	Line number, second part of SLC inventory number
	Groin, jetty, breakwater, etc.
	Shore protection, seawall, riprap, etc.
	Pier
	Other types of artificial features or actions
	Historical artificial features
	Continuous artificial features
	Limits of publicly owned land
	CA—State of California
	CI—City
	CO—County
	REG—Regional eg,sewer district
	US—United States(Federal)
SIR 1/2/77	Shoreline Inspection Report
2020 SC SON	Court case notation
	2020—case number, SC—Superior Court,
	SON—Sonoma County
CMF	Maps filed in State Lands Commission
CB	Microfilm or Map Library

(1) Most maps listed on the Summary Maps are filed in the State Lands Commission Microfilm or Map Library by the letter designations listed. Recording data is also listed if it is available. Maps that are relatively easy to obtain or subject to change were not indexed, such as Parks and Recreation (P&R) Acquisition or Ownership Maps. However, they are pertinent to the "inventory" and are listed.

SAN MIGUEL ISLAND

199-01

SANTA BARBARA CHANNEL



LEGEND*

- ◆◆◆◆ Grain, jetty, breakwater, etc.
 - ▲▲▲- Shore protection, seawall, riprap, etc.
 - ▬ Pier
 - Other types of artificial features
 - Continuous artificial features
 - Inventory study parcel
- * SEE FRONT PAGE FOR DETAILED LEGEND

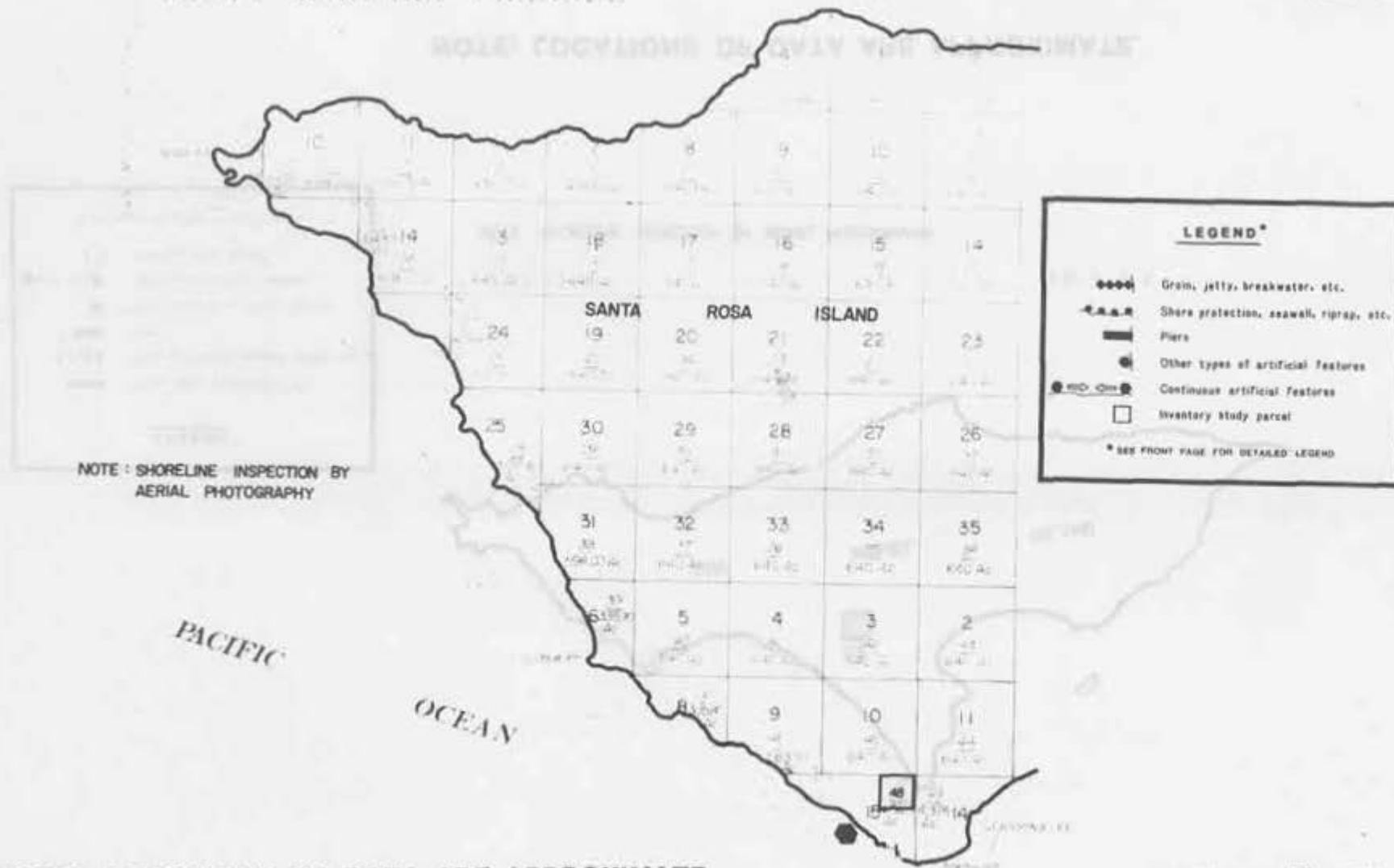
NOTE : SHORELINE INSPECTION BY AERIAL PHOTOGRAPHY

NOTE: LOCATIONS OF DATA ARE APPROXIMATE.

SANTA BARBARA CHANNEL

199-02

1



NOTE: SHORELINE INSPECTION BY AERIAL PHOTOGRAPHY

LEGEND*

- ◆◆◆◆ Groin, jetty, breakwater, etc.
- Shore protection, seawall, riprap, etc.
- ▬ Piers
- Other types of artificial features
- Continuous artificial features
- Inventory study parcel

* SEE FRONT PAGE FOR DETAILED LEGEND

NOTE: LOCATIONS OF DATA ARE APPROXIMATE.

199-02

2

SANTA BARBARA CHANNEL

Ass. Area Code 199-03

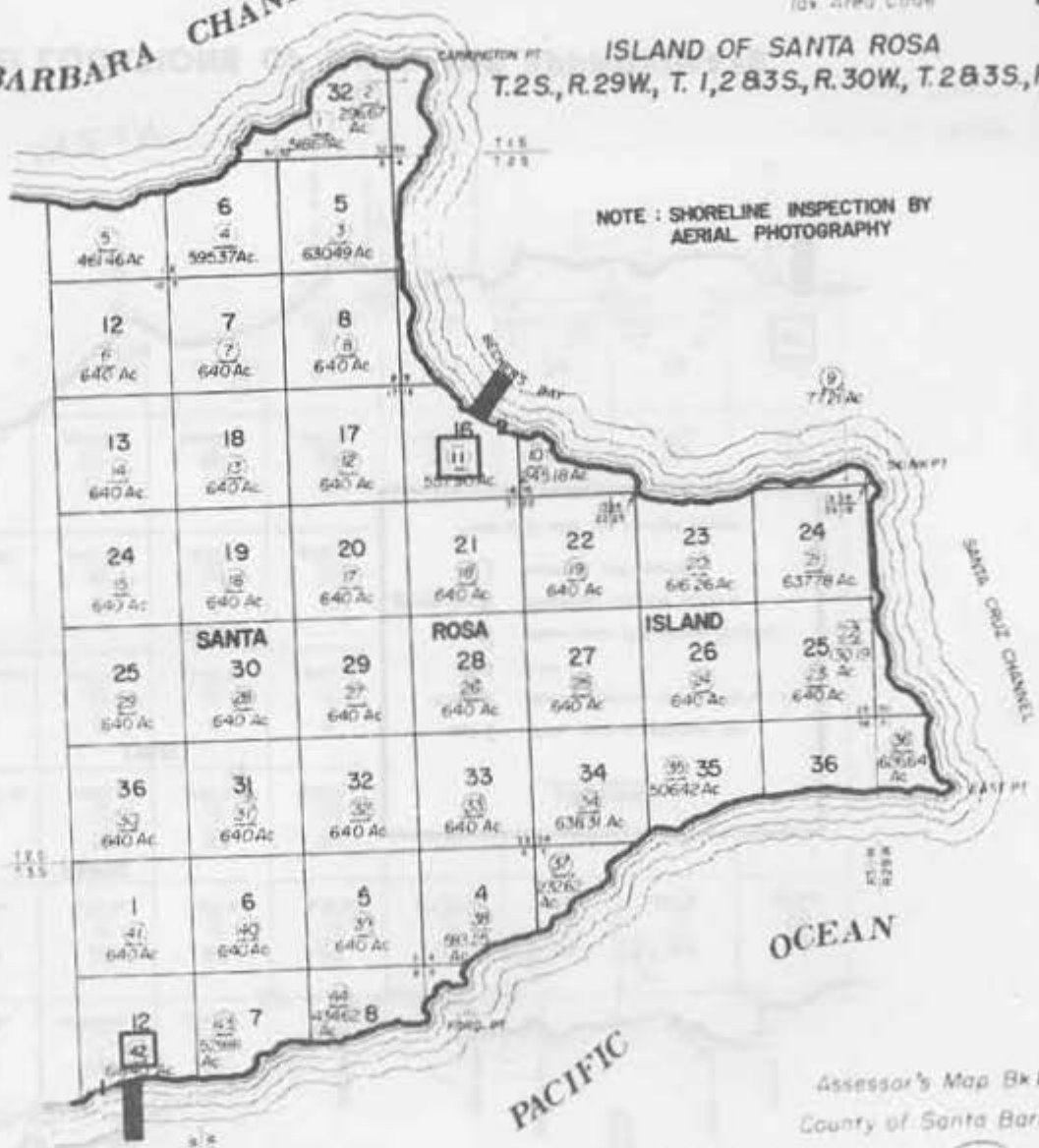
ISLAND OF SANTA ROSA
T.2S, R.29W, T.1,2&3S, R.30W, T.2&3S, R.31W.

NOTE: SHORELINE INSPECTION BY AERIAL PHOTOGRAPHY

LEGEND*

- ▬▬▬▬▬▬ Grain, jetty, breakwater, etc.
- - - - - Shore protection, seawall, reprob, etc.
- ▬▬▬▬▬▬ Pier
- ⊙ Other types of artificial features
- ⊙ Continuous artificial features
- Inventory study parcel

* SEE FRONT PAGE FOR DETAILED LEGEND



NOTE: LOCATIONS OF DATA ARE APPROXIMATE.

Assessor's Map Bk 199 - Pg 03
County of Santa Barbara, Calif

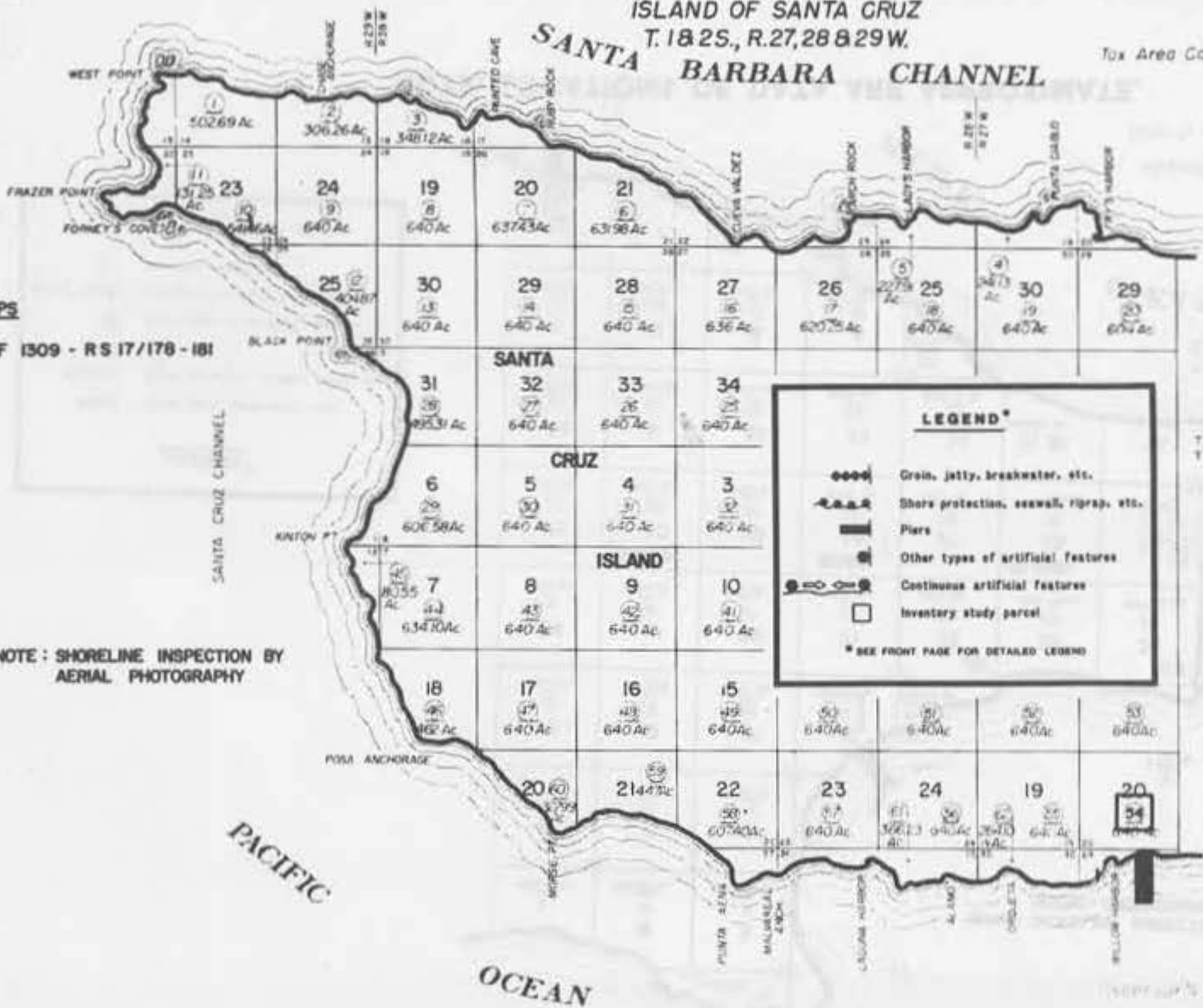
ISLAND OF SANTA CRUZ
T. 18 2S., R. 27, 28 & 29 W.

Tax Area Code

199-04

MAPS

CMF 1309 - RS 17/178 - 181



NOTE: SHORELINE INSPECTION BY AERIAL PHOTOGRAPHY

LEGEND*

- Grain, jetty, breakwater, etc.
- Shore protection, seawall, riprap, etc.
- Piers
- Other types of artificial features
- Continuous artificial features
- Inventory study parcel

* SEE FRONT PAGE FOR DETAILED LEGEND

NOTE: LOCATIONS OF DATA ARE APPROXIMATE.

ISLAND OF SANTA CRUZ
T. 18 2 S., R. 25, 26 & 27 W.

Top. Area Code

199-05

SANTA BARBARA CHANNEL

MAPS

CMF 1309 - RS 17/178-181



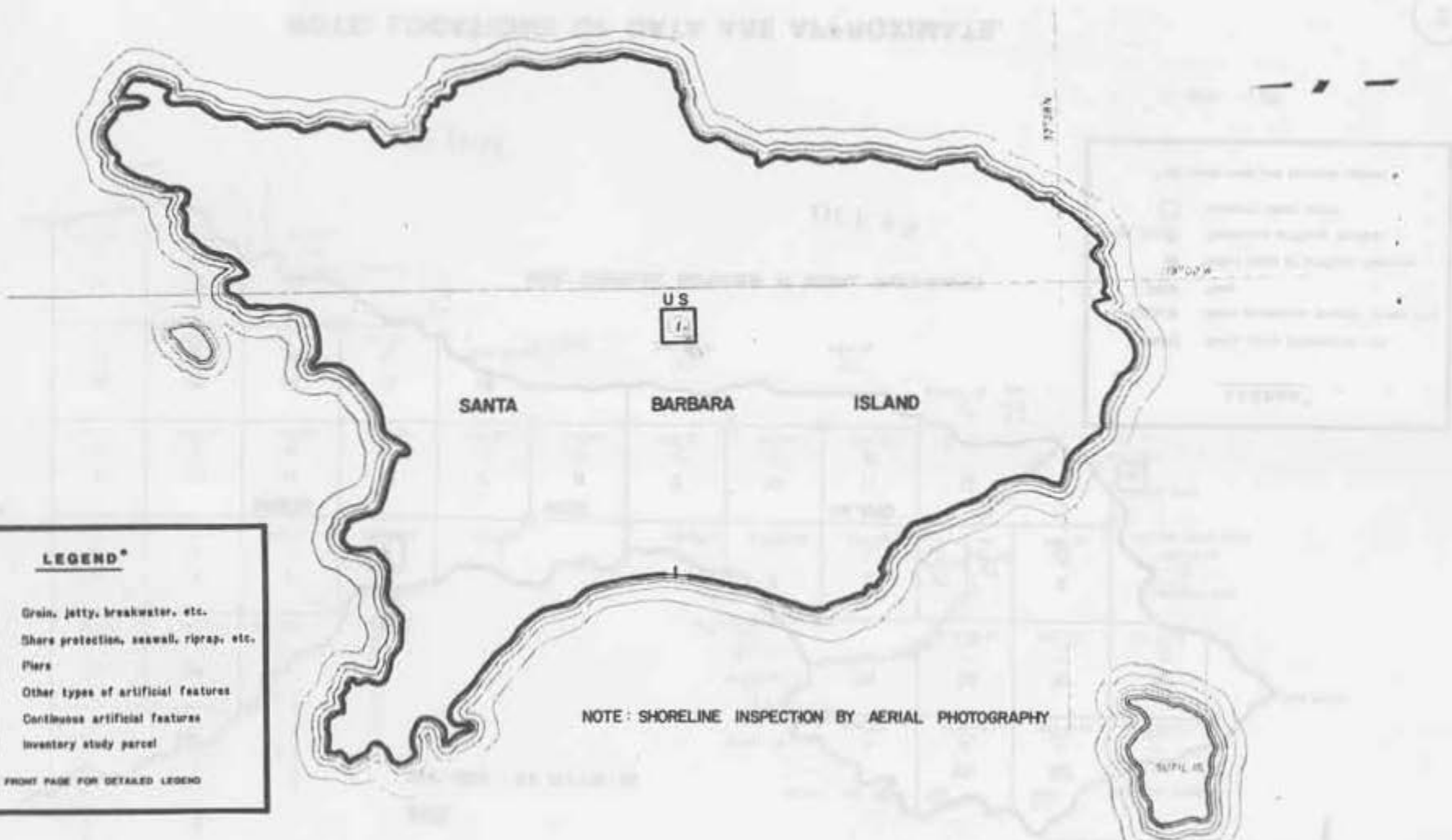
NOTE: SHORELINE INSPECTION BY AERIAL PHOTOGRAPHY

LEGEND*

- ☐ Grain, jetty, breakwater, etc.
- Shore protection, seawall, riprap, etc.
- ▬ Pier
- ⊙ Other types of artificial features
- ⊕ Continuous artificial features
- Inventory study parcel

* SEE FRONT PAGE FOR DETAILED LEGEND

NOTE: LOCATIONS OF DATA ARE APPROXIMATE.



LEGEND*

- o-o-o-o Grain, jetty, breakwater, etc.
- x-x-x-x- Shore protection, seawall, riprap, etc.
- ▬ Piers
- ⊙ Other types of artificial features
- ⊙-o-o-o-o- Continuous artificial features
- Inventory study parcel

* SEE FRONT PAGE FOR DETAILED LEGEND

NOTE: SHORELINE INSPECTION BY AERIAL PHOTOGRAPHY

NOTE: LOCATIONS OF DATA ARE APPROXIMATE.

Assessor's Map Bk. 199 - Pg. 06

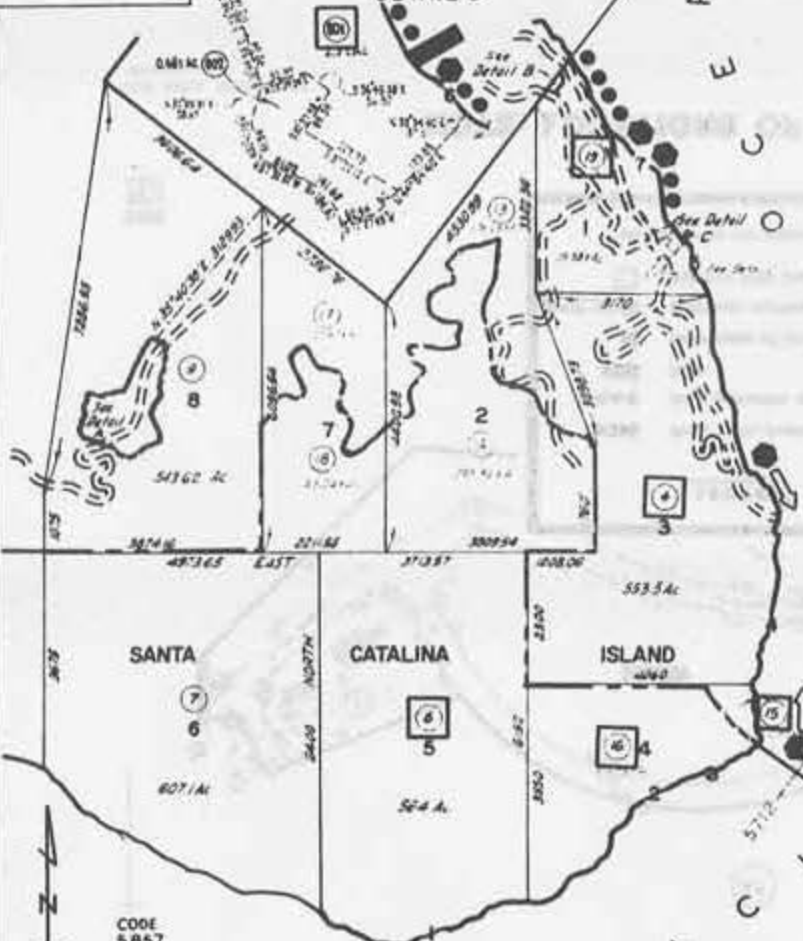
7480 45

GRANT TO CITY OF AVALON 6 05 - 01

GRANT TO CITY OF AVALON 6 05 - 01

DETAIL C

REVISED 5-27-65
AC 327
470321 74011
10887 7404/28/19
JACOBSON



NOTE: SHORELINE INSPECTION BY AERIAL PHOTOGRAPHY

LEGEND*

- Grain, jetty, breakwater, etc.
- - - - - Shore protection, seawall, riprap, etc.
- ▬ Piers
- Other types of artificial features
- Continuous artificial features
- Inventory study parcel

* SEE FRONT PAGE FOR DETAILED LEGEND

TRACT NO. 8911
M.B. 118-3-4

L.A.C.A. MAP NO. 59

A.M. 1-7

NOTE: LOCATIONS OF DATA ARE APPROXIMATE.

All parcels in Tax Rate Area 5712 are in Down-Space Easement Area.

7

ASSESSOR'S MAP
COUNTY OF LOS ANGELES, CALIF.

CODE
5857
5810
5712

FOR PREV ASSM'T SEE 7480-45

SCALE 1" = 100'

7480 45

MAPS
LOCATIONS OF DATA ARE APPROXIMATE
CIP 218 - MB 822 / 69-79



LEGEND

- Green, jolly, brushwood, etc.
- Shrub protection, seaweed, kelp, etc.
- Other types of artificial features
- Inventory study parcel

* SEE FRONT MAP FOR DETAILED LEGEND

NOTE: LOCATIONS OF DATA ARE APPROXIMATE.

FOR PREP. ASSMT. SEE
1480 48

CODE
SANTO
SANTO

ASSESSOR'S MAP
COUNTY OF LOS ANGELES, CALIF.

8

NOTE: SHORELINE INSPECTION BY
AERIAL PHOTOGRAPHY

GRANT TO
CITY OF
MALDEN
8-05-01

PACIFIC

OCEAN

ISLAND

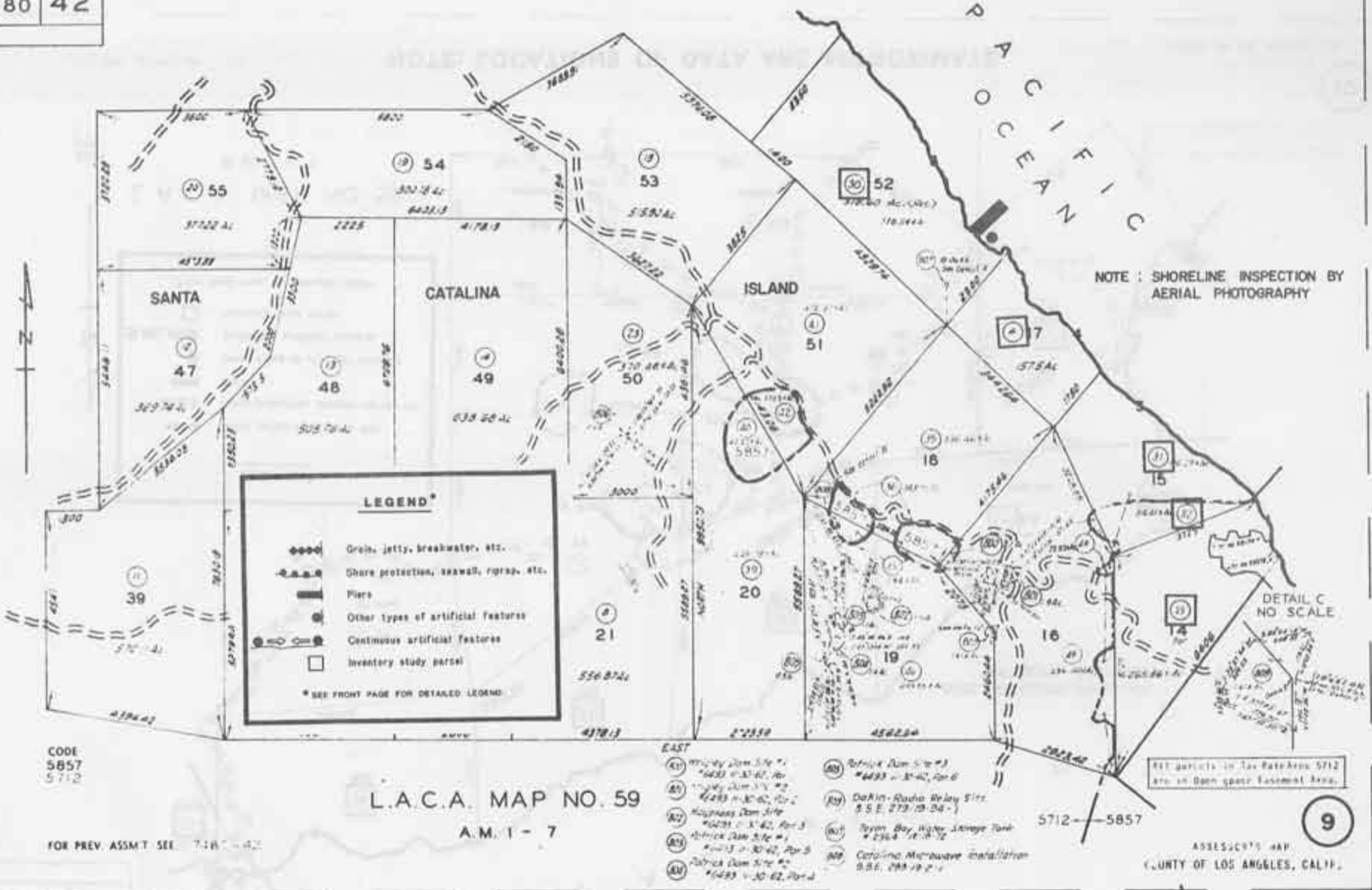
CATALINA

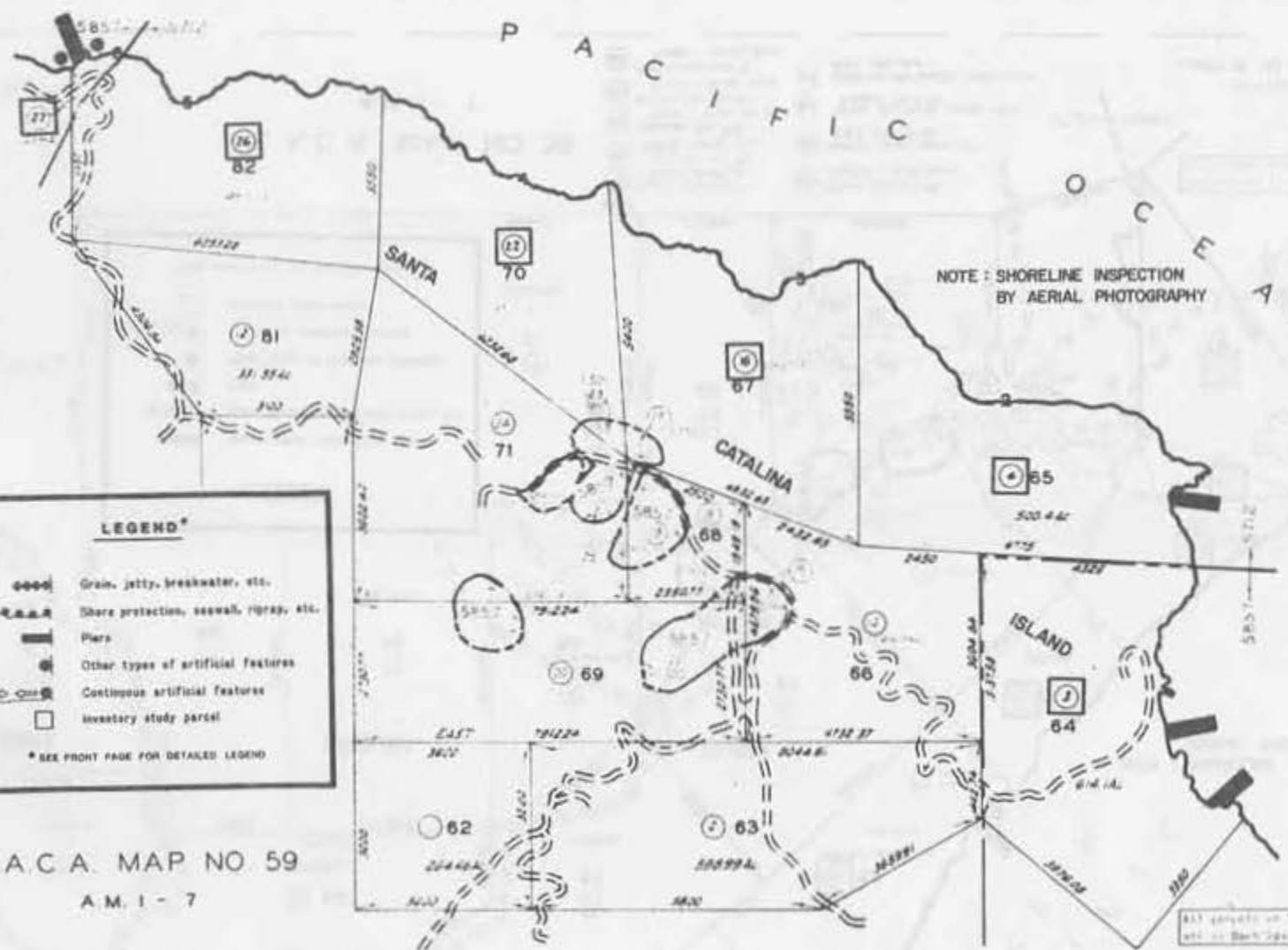
SANTA

10000000

1:10000000
1:10000000
1:10000000

7480 42





LEGEND*

- Grain, jetty, breakwater, etc.
- Shore protection, seawall, riprap, etc.
- Piers
- Other types of artificial features
- Continuous artificial features
- Inventory study parcel

* SEE FRONT PAGE FOR DETAILED LEGEND

L.A.C.A. MAP NO. 59
A.M. 1 - 7

CGOI
5857
1/7

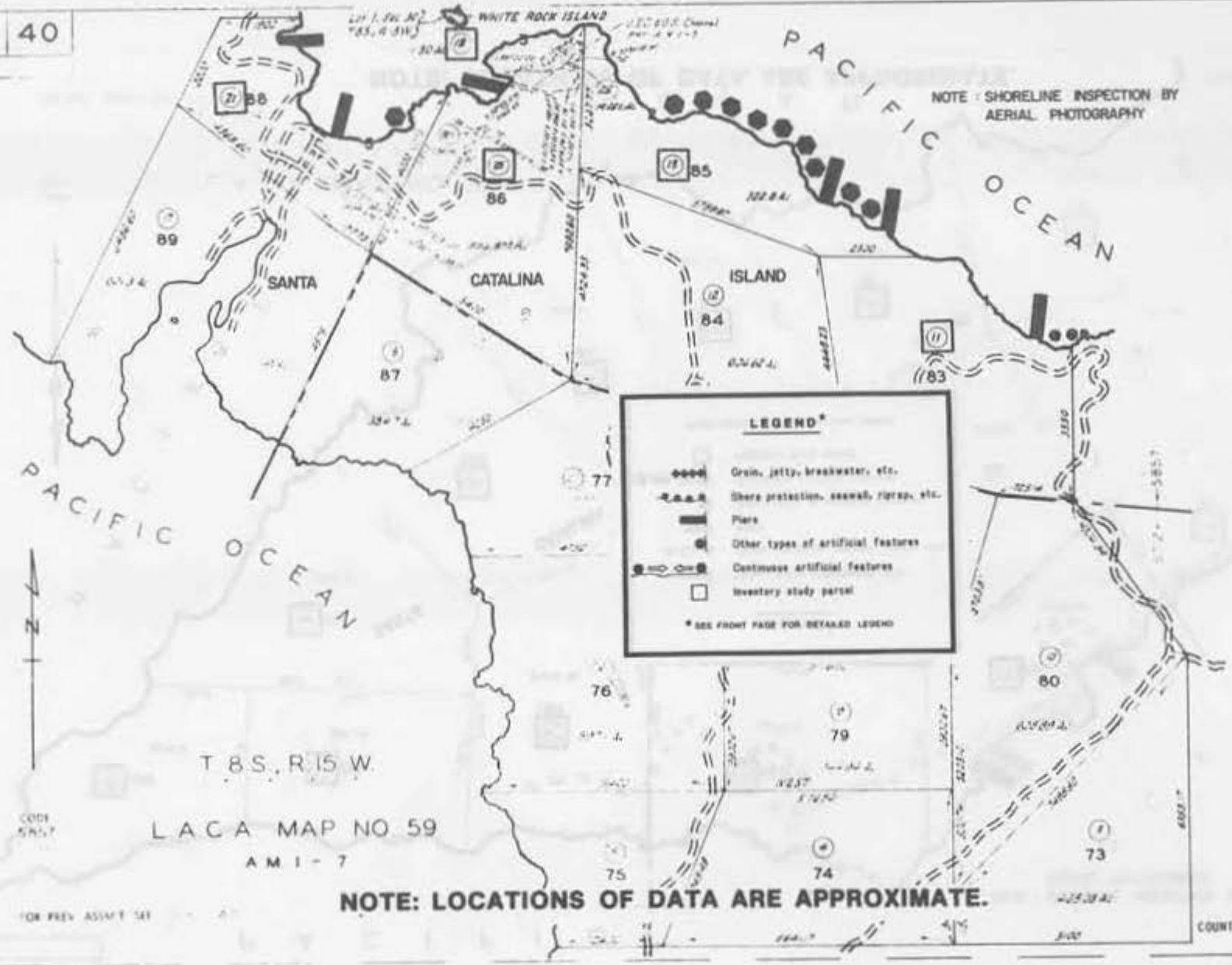
FOR PREV. ASSMT SEE 7480 41

NOTE: LOCATIONS OF DATA ARE APPROXIMATE.

ALL RIGHTS RESERVED BY THE COUNTY OF LOS ANGELES, CALIF.

7480 40

NOTE: SHORELINE INSPECTION BY AERIAL PHOTOGRAPHY



LEGEND*

- Groin, jetty, breakwater, etc.
- - - - - Shore protection, seawall, riprap, etc.
- ▬▬▬▬ Piers
- Other types of artificial features
- Continuous artificial features
- Inventory study parcel

* SEE FRONT PAGE FOR DETAILED LEGEND

NOTE: LOCATIONS OF DATA ARE APPROXIMATE.

CODE 57657

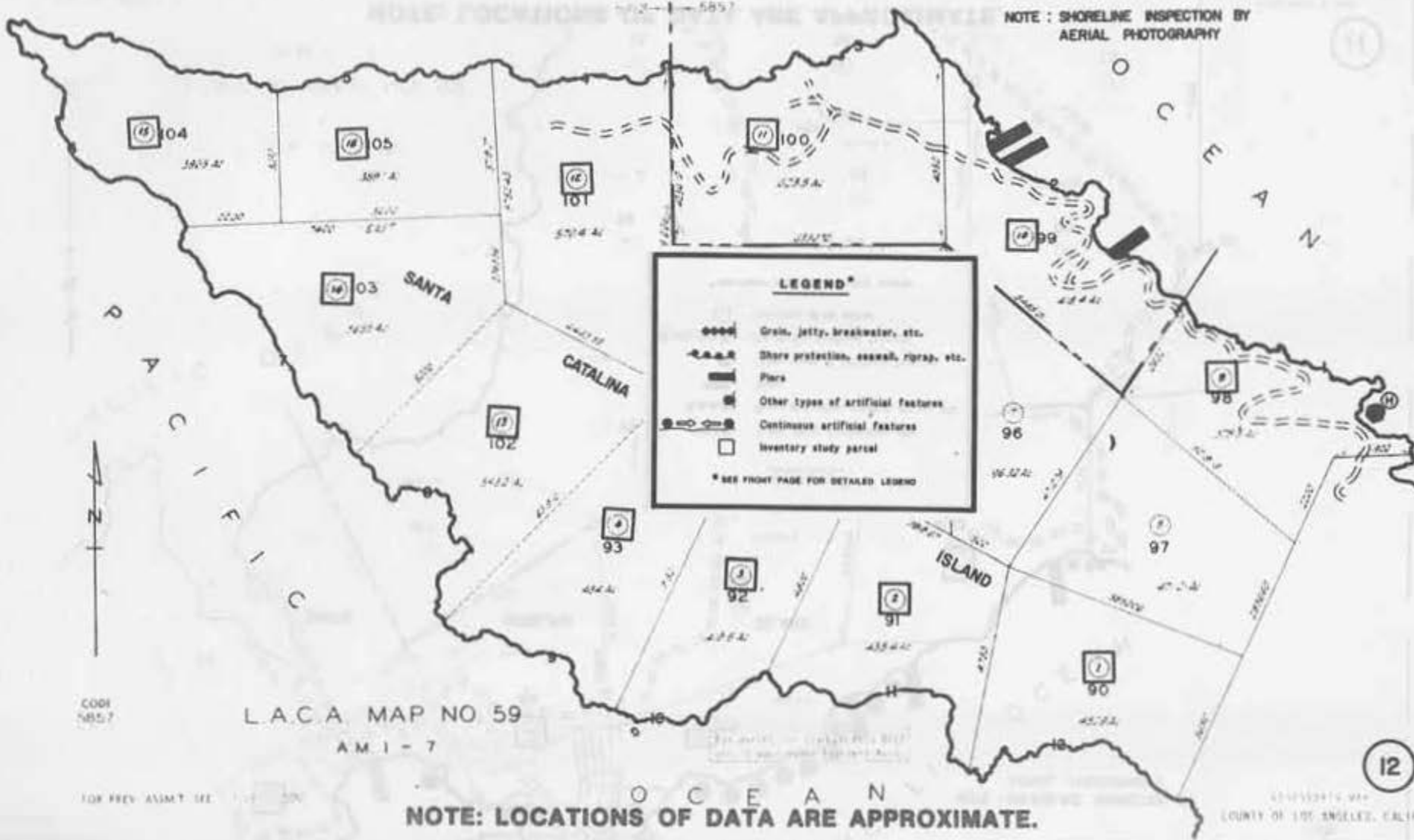
FOR PREV. ASS'N 1 141

11

ASSESSOR'S MAP
COUNTY OF LOS ANGELES, CALIF.

P A C I F I C

NOTE: SHORELINE INSPECTION BY AERIAL PHOTOGRAPHY



LEGEND*

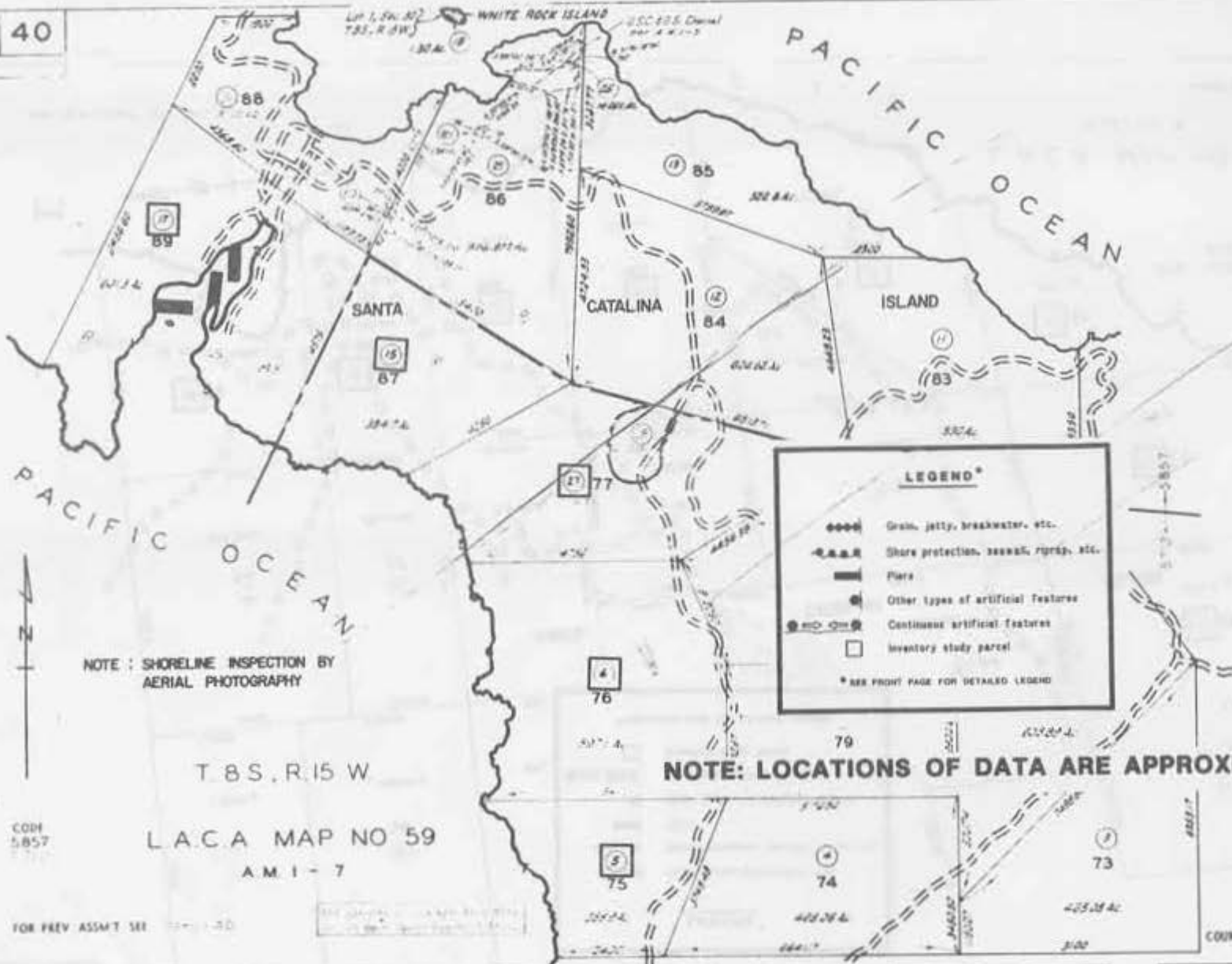
- ▬▬▬▬ Grain, jetty, breakwater, etc.
- ▬▬▬▬ Shore protection, seawall, riprap, etc.
- ▬▬▬▬ Piers
- ▬▬▬▬ Other types of artificial features
- ▬▬▬▬ Continuous artificial features
- Inventory study parcel

* SEE FRONT PAGE FOR DETAILED LEGEND

L.A.C.A. MAP NO 59
A.M. 1-7

O C E A N
NOTE: LOCATIONS OF DATA ARE APPROXIMATE.

7480 40



NOTE: SHORELINE INSPECTION BY AERIAL PHOTOGRAPHY

T. 8 S., R. 15 W.

L.A.C.A. MAP NO 59

A.M.I.-7

COPY 5857

FOR PREV. ASSMT SEE

NOTE: LOCATIONS OF DATA ARE APPROXIMATE.

13

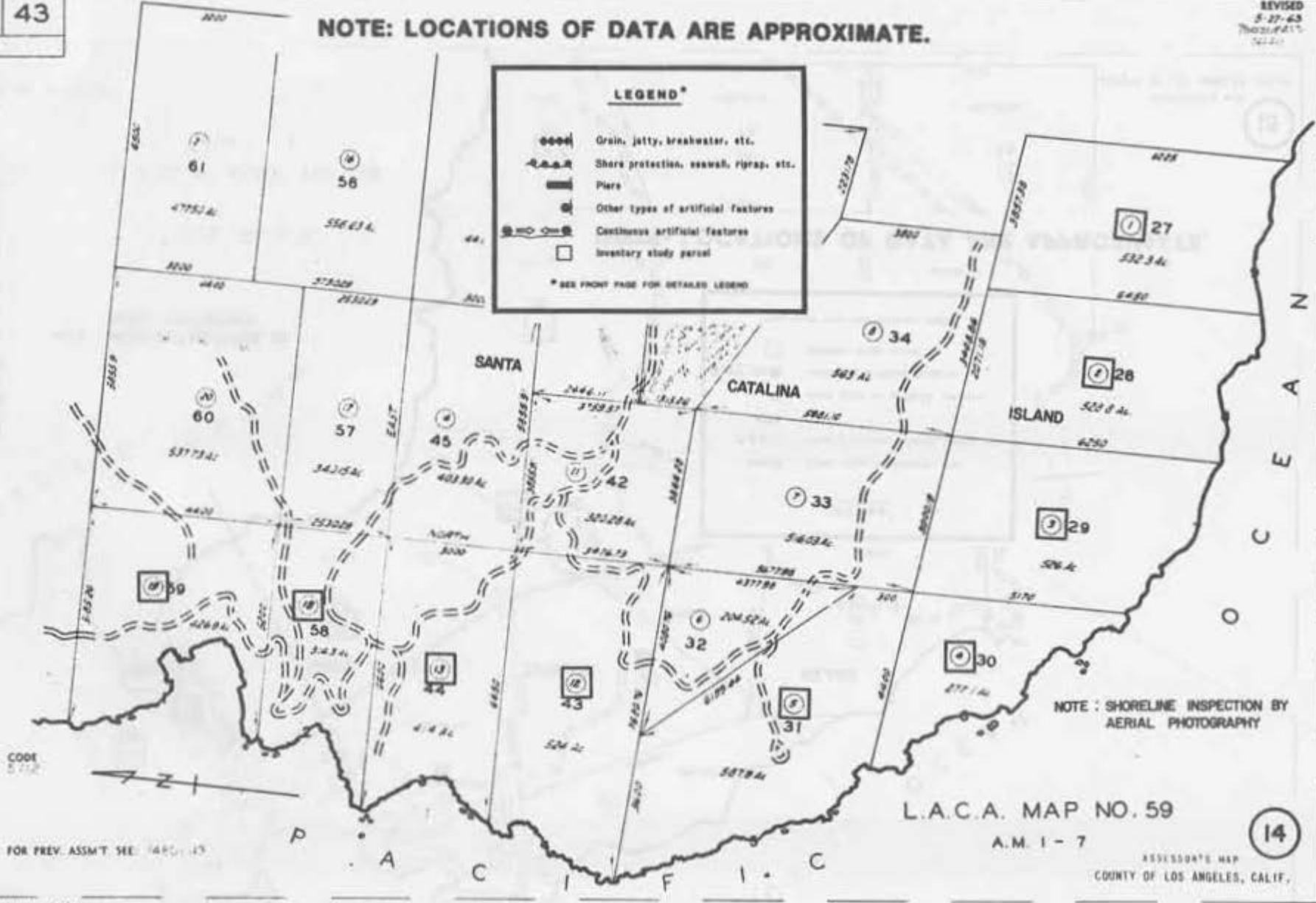
ASSESSOR'S MAP COUNTY OF LOS ANGELES, CALIF.

NOTE: LOCATIONS OF DATA ARE APPROXIMATE.

LEGEND*

- oooo Grain, jetty, breakwater, etc.
- - - - - Shore protection, seawall, riprap, etc.
- ▬ Piers
- ⊙ Other types of artificial features
- ⊖ Continuous artificial features
- Inventory study parcel

* SEE FRONT PAGE FOR DETAILED LEGEND



CODE
5712

FOR PREV. ASSM'T SEE: 7480-43

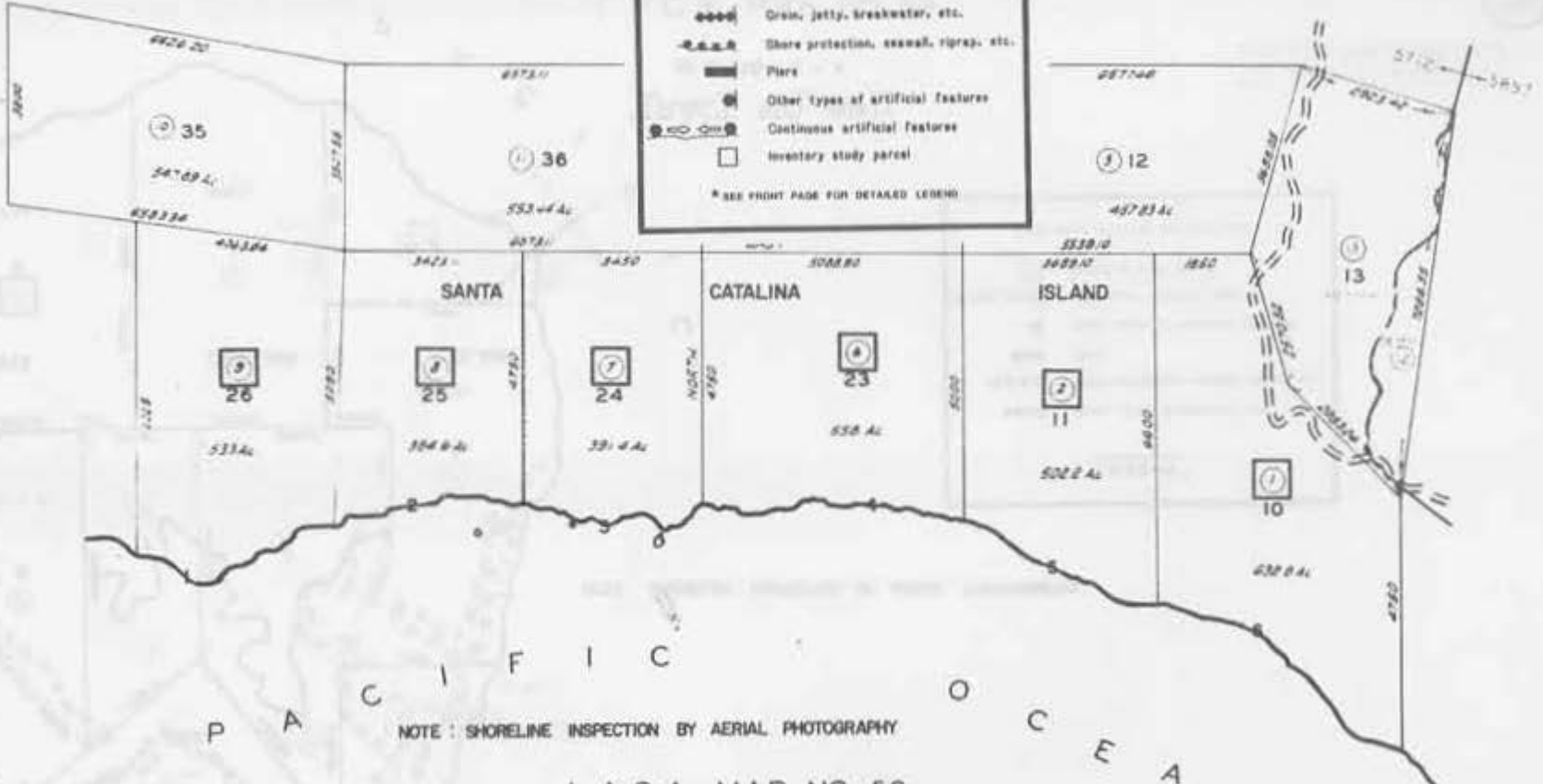
L.A.C.A. MAP NO. 59
A.M. 1-7

ASSESSOR'S MAP
COUNTY OF LOS ANGELES, CALIF.

LEGEND*

- ☐ Inventory study parcel
- Continuous artificial features
- ⊙ Other types of artificial features
- Piers
- Shore protection, seawall, riprap, etc.
- ☐ Orin, jetty, breakwater, etc.

* SEE FRONT PAGE FOR DETAILED LEGEND



CODE 5857

FOR PREV. ASS'MT. SEE 7480-44

NOTE: LOCATIONS OF DATA ARE APPROXIMATE.

ALL parcels in Tax Map Area 5712 are in Open Space Element Area.

ASSISTANT'S MAP
COUNTY OF LOS ANGELES, CALIF.

7480 89/6

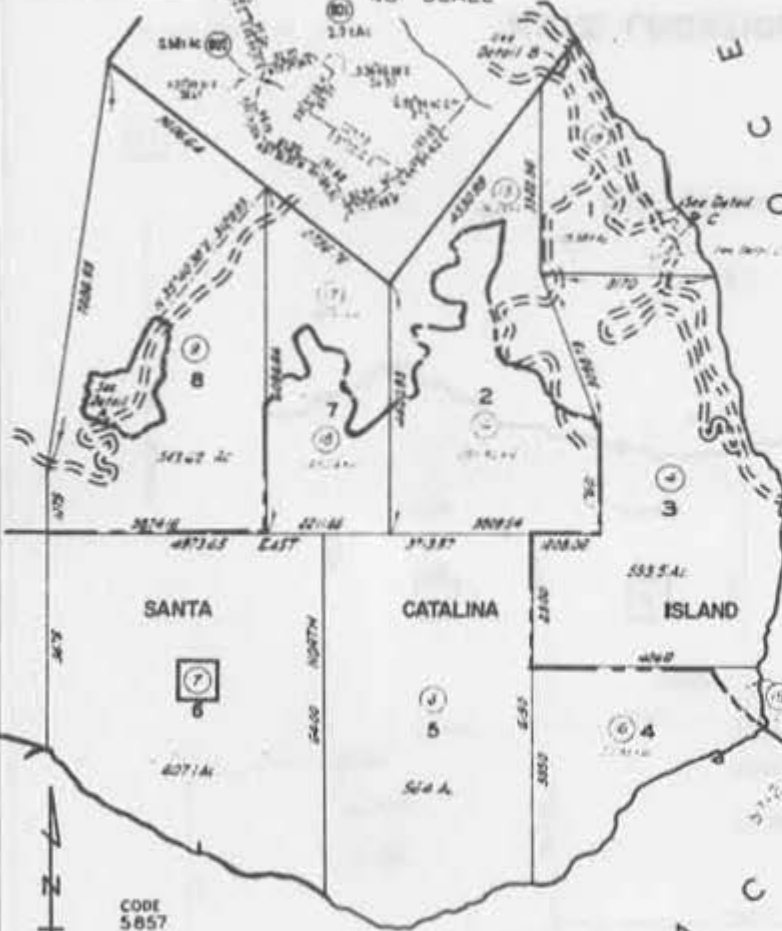
7480 89/6

7480 45

SECTION 16'S 30TH 45'
FROM N.W. COR. 161 1'

REVISED
3-27-63
47821 74811
74812 74813
74814 74815

DETAIL C
NO SCALE



NOTE: SHORELINE INSPECTION BY AERIAL PHOTOGRAPHY

LEGEND*

- ⊕⊕⊕⊕ Grain, jetty, breakwater, etc.
- - - - - Shore protection, seawall, riprap, etc.
- ▬▬▬▬ Piers
- ⊙ Other types of artificial features
- ⊕⊕⊕⊕ Continuous artificial features
- Inventory study parcel

* SEE FRONT PAGE FOR DETAILED LEGEND

CODE
5857
5810
5712

FOR PREV. ASSMT. SEE 7480-45

TRACT NO. 8911
M.B. 116-3-4

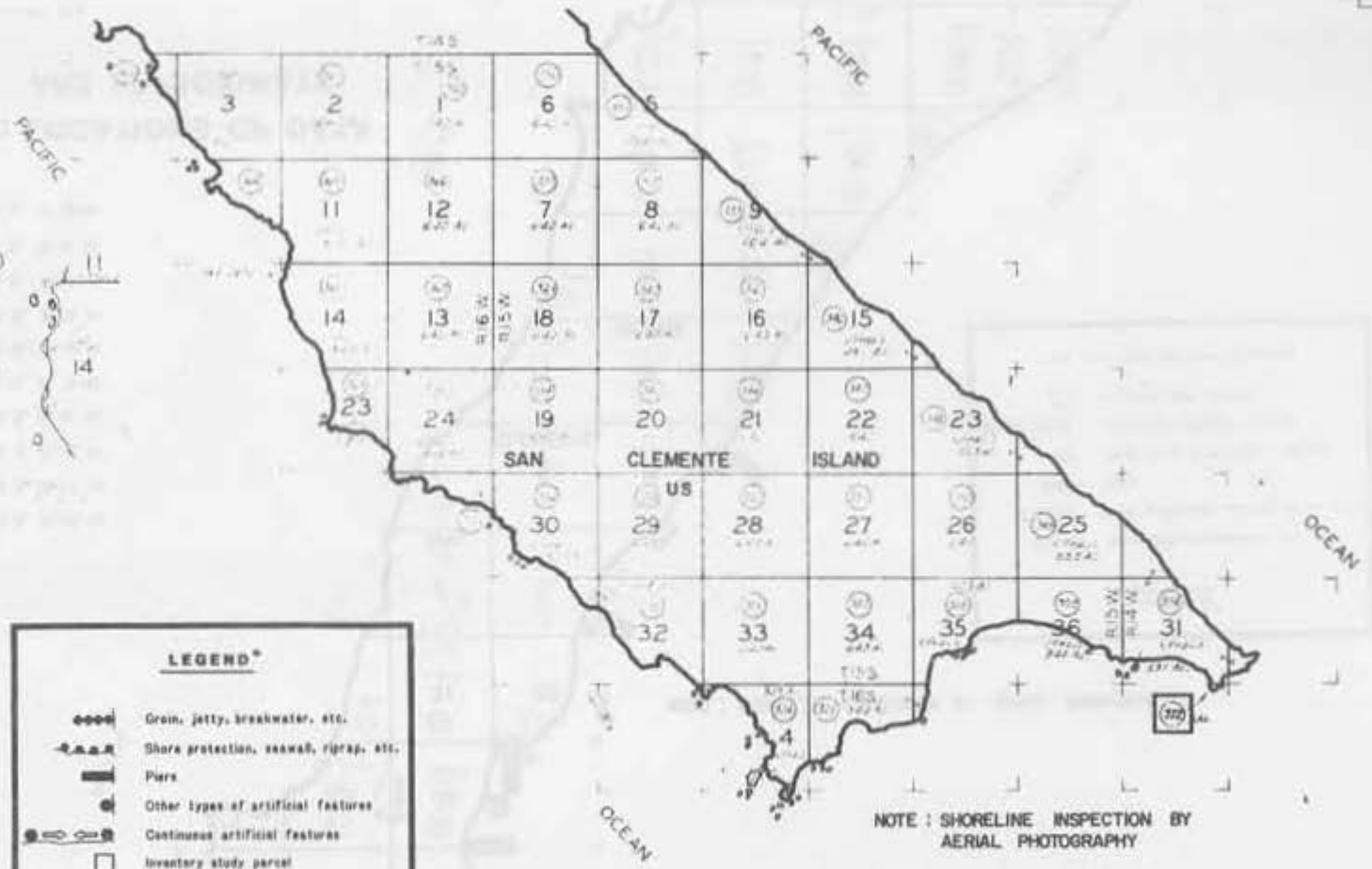
L.A.C.A. MAP NO. 59
A.M. 1-7

All parcels in Tax Rate Area 5712
are in Open Space Assessment Area.

16

ASSESSOR'S MAP
COUNTY OF LOS ANGELES, CALIF.

NOTE: LOCATIONS OF DATA ARE APPROXIMATE.



LEGEND*

-  Groin, jetty, breakwater, etc.
-  Shore protection, seawall, riprap, etc.
-  Piers
-  Other types of artificial features
-  Continuous artificial features
-  Inventory study parcel

* SEE FRONT PAGE FOR DETAILED LEGEND

NOTE: SHORELINE INSPECTION BY AERIAL PHOTOGRAPHY

NOTE: LOCATIONS OF DATA ARE APPROXIMATE.

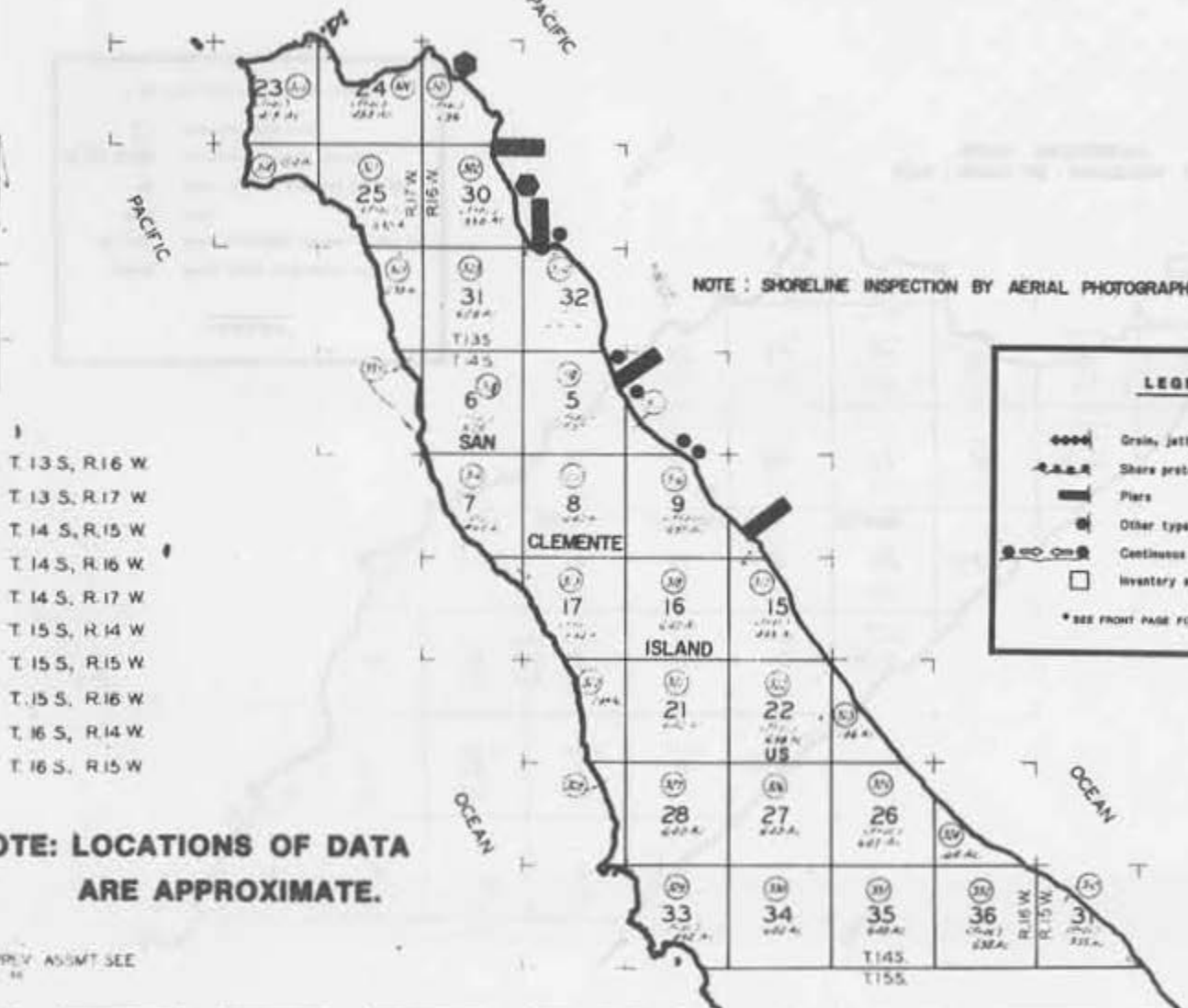
7480

46
SHEET 1

25000000

BOUNDARIES OF ONLY THE PALMSPRING

14



NOTE: SHORELINE INSPECTION BY AERIAL PHOTOGRAPHY

LEGEND*

- Grin, jetty, breakwater, etc.
- Shore protection, seawall, riprap, etc.
- Piers
- Other types of artificial features
- Continuous artificial features
- Inventory study parcel

* SEE FRONT PAGE FOR DETAILED LEGEND

- T. 13 S., R. 16 W.
- T. 13 S., R. 17 W.
- T. 14 S., R. 15 W.
- T. 14 S., R. 16 W.
- T. 14 S., R. 17 W.
- T. 15 S., R. 14 W.
- T. 15 S., R. 15 W.
- T. 15 S., R. 16 W.
- T. 16 S., R. 14 W.
- T. 16 S., R. 15 W.

NOTE: LOCATIONS OF DATA ARE APPROXIMATE.

FOR PREV. ASSMT. SEE 7180 14

LEGEND*

- Grain, jetty, breakwater, etc.
- - - - - Shore protection, seawall, riprap, etc.
- ▬▬▬▬ Pier
- Other types of artificial features
- - - - - ● Continuous artificial features
- Inventory study parcel

* SEE FRONT PAGE FOR DETAILED LEGEND

NOTE : SHORELINE INSPECTION BY
AERIAL PHOTOGRAPHY



NOTE: LOCATIONS OF DATA ARE APPROXIMATE.

DATA SUMMARIES BY PARCEL

DATA SUMMARIES BY PARCEL

PAGE/LINE	ASSESSOR'S PARCEL NO	RECORDING NUMBER	DATE RECORDED	IDENTIFICATION	OWNER-SHIP	TITLE SOURCE	SHORE LENGTH (FEET)	DESC TYPE	DESCRIPTION CALL ALONG WATER	M & B AVAK	SPEC CONS	FEATURE/ACTION	WITHIN PARCEL	STUDY/PRIORITY AUDTEMN O
SEE NOTE 1	SEE NOTE 2 & 4	SEE NOTE 3 & 4	Date vesting document was recorded	Name of public facility or subdivision	Indicates type of public ownership or if parcel is privately owned	Original source of title	Approximate shoreline length of the parcel	Description type	Descriptive call along the water from the description of the parcel	SEE NOTE 5	Special consideration which might affect the boundary along the parcel	Type of artificial feature or action that may be affecting the shoreline of the parcel	Indicates whether or not the physical location of the artificial feature or action is within the parcel limits	SEE NOTE 6

- (1) The SLC "Inventory" number that is given to the Summary Maps (page) and to the individual parcels (line), in a north to south direction, and may not have the same limits as County Assessor's Parcels.
- (2) County Assessor's Parcel Numbers which identifies a parcel of land for tax purposes, and generally were used by SLC in acquiring vesting documents.
- (3) Indicates the recording number of the vesting document acquired for this "inventory". If a "see page/line" number appears in this column, it means that the parcel falls within a subdivision, and the referred to vesting document was acquired for the "inventory", since it would be representative of all the parcels within the subdivision.
- (4) From County Public Records as of 1977, State and Federal ownership as of Jan. 1981.

- (5) Identifies if a description or a map exists that has a metes and bounds survey of the shoreline, an evaluation of that shoreline survey is reflected in the "study/priority AUDTEMN O" column.
- (6) This column lists the numerical value assigned to various factors that affect each parcel and, by a systematic comparison, an overall study/survey priority is established. The factors are:
 - 1) A = Shoreline condition: an evaluation based on the discovery of artificial features or actions.
 - 2) U = Identifies type of ownership and development.
 - 3) D = Descriptive call along the water from the description of the parcel.
 - 4) T = Evaluation of possible title problems.
 - 5) E = Possible encroachment onto sovereign lands.
 - 6) M = An evaluation of the metes and bounds description along the shoreline in the acquired maps and documents.

NOTE: THESE COMPUTER PRINT-OUTS ARE SUMMARIES. WHAT IS SHOWN MAY NOT BE THE EXACT WORDING OR CONDITION

DATA SUMMARIES, BY PARCEL

PAGE/LINE	ASSESSOR'S PARCEL NO.	RECORDING NUMBER	DATE RECORDED	IDENTIFICATION	OWNERSHIP	TITLE SOURCE	SHORE LENGTH (FEET)	DESC TYPE	DESCRIPTION CALL ALONG WATER	PER AVAIL.	SPEC. CONS.	FEATURE/ACTION	WITHIN PARCEL	STUDY/PRIORITY URGENT/AN
1 1	199-010-001	PL 96-199	03-05-80	SAN MIGUEL ISL	US	P ORD	125570.	OTH	ISLAND					594551X 4
2 1	199-020-048	S 15458	05-03-65	SANTA ROSA ISL	PRIV	RANC	119000.	OTH						594551X 3
3 1	199-030-042	S 15458	05-03-65	SANTA ROSA ISL	PRIV	RANC	58500.	OTH					YES	434551X 3
3 2	199-030-011	S 15458	05-03-65	SANTA ROSA ISL	PRIV	RANC	58500.	OTH				PIER	YES	434551X 3
4 1	199-040-054	S 78-42604	09-15-78	SANTA CRUZ ISL	PRIV	RANC	153300.	OTH	HIGH WATER	DESC	LIT	PIER	YES	434551X 4
5 1	199-050-008	S 78-42604	09-15-78	SANTA CRUZ ISL	PRIV	RANC	119600.	OTH	HIGH WATER	DESC	LIT	PIER	YES	434551X 4
5 2	199-050-026	S 44244	10-22-62	SANTA CRUZ ISL	PRIV	RANC	49200.	OTH	HIGH WATER	DESC	LIT			434551X 4
6 1	199-060-001	PL 96-199	03-05-80	S BARBARA ISL	US	P ORD	28800.	OTH	ISLAND					594551X 4
7 1	7480-400-006	S 2919	02-18-75	S CATALINA ISL	PRIV	RANC	4000.	M&B	ORDINARY HT					594551X 4
7 2	7480-400-016	S 2919/2920	02-18-75	S CATALINA ISL	PRIV	RANC	5120.	M&B	ORDINARY HT					594551X 4
7 3	7480-400-015	S 2919/2920	02-18-75	S CATALINA ISL	PRIV	RANC	1200.	M&B	ORDINARY HT			EXCAVATION	YES	114551X 1
7 4	7480-400-004			S CATALINA ISL	PRIV	RANC	7500.					EXCAVATION	YES	11 4315 1
7 5	7480-400-019			S CATALINA ISL	PRIV	RANC	3500.						YES	53 551X 4
7 6	7480-400-001	S 6072	11-30-62	S CATALINA ISL	PRIV	RANC	400.	M&B	MEAN HIGH TIDE		PRC	MULTIPLE	YES	114551X 1
7 7	7480-400-019			S CATALINA ISL	PRIV	RANC	1000.				PRC	MULTIPLE	YES	11 5415 1
8 1	7480-400-001			SD TRACT 29278	PRIV	RANC	425.			NAP				53 434X 3
9 1	7480-400-029			S CATALINA ISL	PRIV	RANC	1400.							53 431X 4
9 2	7480-420-032	S 2919/2920	02-18-75	S CATALINA ISL	PRIV	RANC	2.	M&B	ORDINARY HT					594551X 4
9 3	7480-420-031	S 2919/2920	02-18-75	S CATALINA ISL	PRIV	RANC	5000.	M&B	ORDINARY HT					524551X 4
9 4	7480-420-004	S 2919/2920	02-18-75	S CATALINA ISL	PRIV	RANC	4000.	M&B	ORDINARY HT					535551X 4
9 5	7480-420-030	S 2919/2920	02-18-75	S CATALINA ISL	PRIV	RANC	7000.	M&B	ORDINARY HT			MULTIPLE	YES	435551X 3
10 1	7480-410-003	S 2919/2920	02-18-75	S CATALINA ISL	PRIV	RANC	6200.	M&B	ORDINARY HT			MULTIPLE	YES	435551X 3
10 2	7480-410-004	S 2919/2920	02-18-75	S CATALINA ISL	PRIV	RANC	13000.	M&B	ORDINARY HT			MULTIPLE	YES	434551X 3
10 3	7480-410-016	S 2919/2920	02-18-75	S CATALINA ISL	PRIV	RANC	6300.	M&B	ORDINARY HT					594551X 4
10 4	7480-410-022	S 2919/2920	02-18-75	S CATALINA ISL	PRIV	RANC	5800.	M&B	ORDINARY HT					594551X 4
10 5	7480-410-026	S 2919/2920	02-18-75	S CATALINA ISL	PRIV	RANC	8400.	M&B	ORDINARY HT					594551X 4
10 6	7480-410-037	S 2919/2920	02-18-75	S CATALINA ISL	PRIV	RANC	1000.	M&B	ORDINARY HT					594551X 4
11 1	7480-400-011			S CATALINA ISL	PRIV	RANC	4500.					MULTIPLE	YES	114551X 1
11 2	7480-400-013			S CATALINA ISL	PRIV	RANC	10000.					MULTIPLE	YES	11 5115 1
11 3	7480-400-025			S CATALINA ISL	PRIV	RANC	5800.					MULTIPLE	YES	11 4115 1
11 4	7480-400-018			WHITE ROCK ISL	PRIV	S PAT	1500.					PIEP	YES	12 4115 1
11 5	7480-400-021	S 2919	02-18-75	S CATALINA ISL	PRIV	RANC	7500.	M&B	ORDINARY HT			MULTIPLE	YES	51 4515 4
12 1	7480-390-009	S 2919/2920	02-18-75	S CATALINA ISL	PRIV	RANC	8300.	M&B	ORDINARY HT			MULTIPLE	YES	114551X 1
12 2	7480-390-010			S CATALINA ISL	PRIV	RANC	10400.					MULTIPLE	YES	11 411X 2
12 3	7480-390-011	S 2919/2920	02-18-75	S CATALINA ISL	PRIV	RANC	8400.	M&B	ORDINARY HT			MULTIPLE	YES	114551X 1
12 4	7480-390-012	S 2919/2920	02-18-75	S CATALINA ISL	PRIV	RANC	5000.	M&B	ORDINARY HT					534551X 4
12 5	7480-390-014	S 2919/2920	02-18-75	S CATALINA ISL	PRIV	RANC	9200.	M&B	ORDINARY HT					594551X 4
12 6	7480-390-015	S 2919/2920	02-18-75	S CATALINA ISL	PRIV	RANC	14900.	M&B	ORDINARY HT					594551X 4
12 7	7480-390-014	S 2919/2920	02-18-75	S CATALINA ISL	PRIV	RANC	7800.	M&B	ORDINARY HT					594551X 4
12 8	7480-390-013	S 2919/2920	02-18-75	S CATALINA ISL	PRIV	RANC	6600.	M&B	ORDINARY HT					594551X 4
12 9	7480-390-004	S 2919/2920	02-18-75	S CATALINA ISL	PRIV	RANC	5400.	M&B	ORDINARY HT					594551X 4
12 10	7480-390-003	S 2919/2920	02-18-75	S CATALINA ISL	PRIV	RANC	4300.	M&B	ORDINARY HT					594551X 4
12 11	7480-390-002	S 2919/2920	02-18-75	S CATALINA ISL	PRIV	RANC	7100.	M&B	ORDINARY HT					594551X 4
12 12	7480-390-001	S 2919/2920	02-18-75	S CATALINA ISL	PRIV	RANC	6400.	M&B	ORDINARY HT					594551X 4
13 1	7480-400-017			S CATALINA ISL	PRIV	RANC	7600.							594551X 4
13 2	7480-400-017			S CATALINA ISL	PRIV	TL	6400.					PIEP	YES	43 4115 4
13 3	7480-400-017			S CATALINA ISL	PRIV	RANC	3500.					MULTIPLE	YES	22 133X 1
13 4	7480-400-019	S 2919/2920	02-18-75	S CATALINA ISL	PRIV	RANC	3200.	M&B	ORDINARY HT					54 551X 4
13 5	7480-400-027	S 2919/2920	02-18-75	S CATALINA ISL	PRIV	RANC	2800.	M&B	ORDINARY HT					594551X 4
13 6	7480-400-006	S 2919/2920	02-18-75	S CATALINA ISL	PRIV	RANC	6800.	M&B	ORDINARY HT					594551X 4
13 7	7480-400-005	S 2919/2920	02-18-75	S CATALINA ISL	PRIV	RANC	4200.	M&B	ORDINARY HT					594551X 4
14 1	7480-430-019	S 2919/2920	02-18-75	S CATALINA ISL	PRIV	RANC	8600.	M&B	ORDINARY HT					594551X 4
14 2	7480-430-018	S 2919/2920	02-18-75	S CATALINA ISL	PRIV	RANC	4400.	M&B	ORDINARY HT					594551X 4
14 3	7480-430-015	S 2919/2920	02-18-75	S CATALINA ISL	PRIV	RANC	3200.	M&B	ORDINARY HT					594551X 4

NOTE: THESE COMPUTER PRINT-OUTS ARE SUMMARIES, WHAT IS SHOWN MAY NOT BE THE EXACT WORDING OR CONDITION.

NOTE: THESE COMPUTER PRINT-OUTS ARE SUMMARIES, WHAT IS SHOWN MAY NOT BE THE EXACT WORDING OR CONDITION.

PAGE/LINE	ASSESSOR'S PARCEL NO.	RECORDING NUMBER	DATE RECORDED	IDENTIFICATION	OWNER-SHIP	TITLE SOURCE	SHORE LENGTH (FEET)	DESC TYPE	DESCRIPTION CALL ALONG WATER	M+B AVAIL.	SPEC. CONS.	FEATURE/ACTION	WITHIN PARCEL	STUDY/PRIORITY AUDEM N O
14 4	7480-480-012	S 2919/2920	02-18-75	S CATALINA ISL	PRIV	RANC	4000.	M&B	ORDINARY HT					554551X 4
14 5	7480-480-005	S 2919/2920	02-18-75	S CATALINA ISL	PRIV	RANC	7800.	M&B	ORDINARY HT					554551X 4
14 6	7480-480-004	S 2919/2920	02-18-75	S CATALINA ISL	PRIV	RANC	9000.	M&B	ORDINARY HT					554551X 4
14 7	7480-480-003	S 2919/2920	02-18-75	S CATALINA ISL	PRIV	RANC	4500.	M&B	ORDINARY HT					554551X 4
14 8	7480-480-002	S 2919/2920	02-18-75	S CATALINA ISL	PRIV	RANC	4000.	M&B	ORDINARY HT					554551X 4
14 9	7480-480-001	S 2919/2920	02-18-75	S CATALINA ISL	PRIV	RANC	4000.	M&B	ORDINARY HT					554551X 4
18 1	7480-440-009	S 2919/2920	02-18-75	S CATALINA ISL	PRIV	RANC	4200.	M&B	ORDINARY HT					554551X 4
18 2	7480-440-006	S 2919/2920	02-18-75	S CATALINA ISL	PRIV	RANC	5800.	M&B	ORDINARY HT					554551X 4
18 3	7480-440-007	S 2919/2920	02-18-75	S CATALINA ISL	PRIV	RANC	4000.	M&B	ORDINARY HT					554551X 4
18 4	7480-440-006	S 2919/2920	02-18-75	S CATALINA ISL	PRIV	RANC	4000.	M&B	ORDINARY HT					554551X 4
18 5	7480-440-002	S 2919/2920	02-18-75	S CATALINA ISL	PRIV	RANC	4200.	M&B	ORDINARY HT					554551X 4
18 6	7480-440-001	S 2919/2920	02-18-75	S CATALINA ISL	PRIV	RANC	5800.	M&B	ORDINARY HT					554551X 4
18 7	7480-480-007	S 2919/2920	02-18-75	S CATALINA ISL	PRIV	RANC	5800.	M&B	ORDINARY HT					554551X 4
17 1	7480-460-872	P.ORD 6897	12-07-84	S CLEMENTE ISL	US	P.ORD	137300.	OTH	ISLAND		PRC	MULTIPLE	YES	144541X 3
18 1	7480-460-872	P.ORD 6897	12-07-84	S CLEMENTE ISL	US	P.ORD	134600.	OTH	ISLAND		PRC	MULTIPLE	YES	144541X 3
19 1	000-000-000	P.ORD 6009	01-31-83	SAN NICOLAS ISL	US	P.ORD	131500.	OTH	ISLAND		PRC	MULTIPLE	YES	144541X 3
20 1	000-000-000	PL 76-179	03-05-80	ANACAPA ISL	US	P.ORD	77100.	OTH	ISLAND					554551X 4
21 1	000-000-000	P.ORD 1045	02-27-09	PARALLON ISLS	US	P.ORD	400000.	OTH	ISLAND					554551X 4

NOTE: THESE COMPUTER PRINT-OUTS ARE SUMMARIES, WHAT IS SHOWN MAY NOT BE THE EXACT WORDING OR CONDITION.

APN - PAGE/LINE

ASSESSOR'S PARCEL NO.	PAGE/LINE	ASSESSOR'S PARCEL NO.	PAGE/LINE	ASSESSOR'S PARCEL NO.	PAGE/LINE
000-000-000	19 1	7480-400-006	13 6	7480-430-003	14 7
000-000-000	20 1	7480-400-011	11 1	7480-430-004	14 6
000-000-000	21 1	7480-400-013	11 2	7480-430-005	14 5
199-010-001	1 1	7480-400-015	13 4	7480-430-012	14 4
199-020-046	2 1	7480-400-017	13 1	7480-430-013	14 3
199-030-011	3 2	7480-400-017	13 2	7480-430-018	14 2
199-030-042	3 1	7480-400-017	13 3	7480-430-019	14 1
199-040-024	4 1	7480-400-018	11 4	7480-440-001	15 6
199-050-008	5 1	7480-400-021	11 5	7480-440-002	15 5
199-050-026	5 2	7480-400-025	11 3	7480-440-006	15 4
199-050-001	6 1	7480-400-027	13 5	7480-440-007	15 3
7480-340-001	12 12	7480-410-003	10 1	7480-440-008	15 2
7480-340-002	12 11	7480-410-004	10 2	7480-440-009	15 1
7480-340-003	12 10	7480-410-016	10 3	7480-450-004	7 4
7480-390-004	12 9	7480-410-022	10 4	7480-450-006	7 1
7480-390-005	12 1	7480-410-026	10 5	7480-450-007	16 1
7480-390-010	12 2	7480-410-027	10 6	7480-450-015	7 3
7480-390-011	12 3	7480-420-004	9 4	7480-450-016	7 2
7480-390-012	12 4	7480-420-029	9 1	7480-450-019	7 5
7480-390-013	12 8	7480-420-030	9 5	7480-450-019	7 7
7480-390-014	12 7	7480-420-031	9 3	7480-450-001	7 6
7480-390-015	12 6	7480-420-032	9 2	7480-460-372	17 1
7480-390-016	12 5	7480-430-001	14 9	7480-460-372	16 1
7480-400-005	13 7	7480-430-002	14 8	7480-480-001	8 1

INVENTORY FILES

INVENTORY FILES - ISLANDS

The following files were established for the inventory.

1. PARCEL SUMMARY SHEETS:

- a. Description: The Parcel Summary Sheet documents and summarizes the data discovered for a given parcel (see Exhibit A for a sample sheet). A separate sheet is available for each inventory parcel. Note: These sheets are working documents; thus, the format and data included will vary somewhat from area to area.
- b. Files: Parcel Summary Sheets are filed exclusively within the inventory files. The files are arranged by island, and within each island, by page/line number.

2. ARTIFICIAL FEATURE/ACTION RECORDS:

The following artificial feature or action records were compiled during the inventory.

SHORELINE INSPECTION REPORTS

- a. Description: These reports describe and document the findings of the shoreline inspection work (usually actual on-site, field inspections). Each report consists of, a) a short, concise narrative summary, b) detailed field notes (see Exhibit B for sample notes), c) snapshots, and d) reference plats (reduced assessor's plats).
- b. Files: The files are arranged by island, and the individual reports are filed chronologically. The Summary Maps included within also reference the Shoreline Inspection Reports (see white pages).

LIST OF SOURCES FOR OFFICE RESEARCH

- a. Description: This is a complete list of all sources used during office research. Sources include aerial photos, selected maps, publications, etc. The list also serves as an index for identifying the source of data for other listings.
- b. Files: The lists are compiled by county and are filed in front of the "abstract" file (see below).

ABSTRACTS FROM OFFICE RESEARCH

- a. Description: This file contains all the "raw" material accumulated during the office research. Examples of material included are lists of possible artificial features from aerial photography, abstracts from articles, notes from historical maps, and copies of selected pages from publications. The format of the material included varies widely to meet the conditions of the sources.

- b. Files: The abstract files are arranged by county. Within each county, the files are divided into three subfiles - "aerial photos", "maps", and "other".

SUMMARIES OF HISTORICAL ARTIFICIAL FEATURE/ACTION DATA

- a. Description: These are tabulations of the historical artificial features and actions discovered during the inventory study. A separate summary is prepared for each island. For each item discovered, the summary provides a description, approximate location, dates, and reference source. The items are tabulated in geographic order.
- b. Files: The summaries are filed by island.

NOTE: All artificial feature or action records are filed exclusively within the "inventory" files.

3. MAPS:

- a. Description: For the inventory, an attempt was made to acquire those maps applicable to the State/upland boundary. The success of this effort varied, depending primarily on the completeness of the county's map indexing system.
- b. Files: All maps used in the inventory work are filed in the State Lands Map Library (Sacramento). The maps are indexed by the standard State Lands map indexing system. The Summary Maps also reference the applicable maps (see white pages).

4. DOCUMENTS:

- a. Description: Documents acquired during the inventory consist primarily of vesting records, deeds, patents, executive orders, etc. An attempt was made to obtain the latest vesting document for each inventory parcel, but this was not always feasible.
- b. Files: These records are filed exclusively within the inventory files. The files are arranged by county. Within each county, the files are separated by type of document, deeds, official records, executive orders, etc., and also by miscellaneous maps. Within the subfiles, documents are filed by recording number and miscellaneous maps are filed alphabetically. The Summary Maps also reference the miscellaneous maps (see white pages).

5. AERIAL PHOTOGRAPHY:

- a. Description: Two sets of aerial photography were acquired for the inventory - one current and one historical. The current photography is in black and white and has a scale of about 1" = 1000'. The historical photography varies in scale and date. Generally, the scale is greater than 1" = 2000' and the photography date is prior to 1942. For inventory purposes we selected aerial photography

which covered relatively long stretches of shoreline; thus, better historical photography might be available for specific areas.

- b. Files: All aerial photography used in the inventory is filed in the State Lands Aerial Photography File (Sacramento). The photographs are geographically indexed by the standard State Lands aerial photography indexing system. The Parcel Summary Sheets (see "1", above) also reference the aerial photographs.

6. LITIGATION:

- a. Description: As part of the inventory process, court cases indexed by State Lands Records section were researched. This work created two types of records: a) "Litigation - Case Listings", which list cases discovered within a geographical area and those cases selected for further review, and b) "Litigation Summary Sheets", which provide a preliminary legal review of the selected cases.
- b. Files: The two specific records described above are filed within the inventory files. The material is arranged by county. Within each county the "listings" are filed first, followed by the "Summary Sheets" in order by case number. Court documents and other reference materials are filed in State Lands Legal section files in Sacramento. Court cases that appear to directly affect the State/upland boundary location are referenced on the Summary Maps (see white pages).

7. MISCELLANEOUS:

In addition to the files specifically established or used during the inventory (as noted above) the State Lands record system in Sacramento includes many other files which were researched for the inventory. The principal files utilized are listed below. Data from these files is included in the material previously described.

- a. Tideland Sales
- b. Granted Lands (Legislative Grants)
- c. Spanish/Mexican Grants (Ranchos, Pueblos, Missions, Presidios)
- d. Public Notices
- e. Work Orders
- f. Publication Library
- g. Historical Quads
- h. Historical Topographic and Hydrographic Charts

PARCEL SUMMARY SHEET

IDENTIFICATION: Prepared by _____ Date _____

County: _____ Assessor's No.: _____
 Quad: _____ Document No.: _____
 Z/N/E: _____ Geographic Id.: _____
 Adj. Assessor No.: North/East _____ South / West _____

DESCRIPTION REVIEW: Prepared by _____ Date _____

Type	Ownership	Title Derived From
Metes & Bounds <input type="checkbox"/>	USA* <input type="checkbox"/>	Spanish/Mexican Grant <input type="checkbox"/>
Subdivision <input type="checkbox"/>	State* <input type="checkbox"/>	S Patent <input type="checkbox"/>
Sectional <input type="checkbox"/>	County* <input type="checkbox"/>	Tideland Sale <input type="checkbox"/>
Other* <input type="checkbox"/>	City* <input type="checkbox"/>	Swamp & Overflowed <input type="checkbox"/>
	Regional* <input type="checkbox"/>	Other* <input type="checkbox"/>
	Private <input type="checkbox"/>	Unknown <input type="checkbox"/>
Shoreline Distance _____ Ft.±		

Call Along Water Line	References	File	Problems
Water, not specific* <input type="checkbox"/>	_____ <input type="checkbox"/>	_____ <input type="checkbox"/>	_____
Ordinary High Water <input type="checkbox"/>	_____ <input type="checkbox"/>	_____ <input type="checkbox"/>	_____
Other Water Line* <input type="checkbox"/>	_____ <input type="checkbox"/>	_____ <input type="checkbox"/>	_____
Metes & Bounds Line <input type="checkbox"/>	_____ <input type="checkbox"/>	_____ <input type="checkbox"/>	_____
Questionable <input type="checkbox"/>	_____ <input type="checkbox"/>	_____ <input type="checkbox"/>	_____
Other* <input type="checkbox"/>	_____ <input type="checkbox"/>	_____ <input type="checkbox"/>	_____

BOUNDARY LINE CONDITION: Prepared by _____ Date _____

Condition	Type of Influence	Evidence
Natural <input type="checkbox"/>	Pier/Dock <input type="checkbox"/>	_____
Artificial <input type="checkbox"/>	Pipe <input type="checkbox"/>	_____
Study Required* <input type="checkbox"/>	Jetty/Grain <input type="checkbox"/>	_____
* Estimated Hours _____	Breakwater <input type="checkbox"/>	_____
Special Considerations:	Fill <input type="checkbox"/>	_____
B L A <input type="checkbox"/> YES <input type="checkbox"/> NO	Shore Protection* <input type="checkbox"/>	_____
Quiet Title Action <input type="checkbox"/> YES <input type="checkbox"/> NO	Dredging <input type="checkbox"/>	_____
Other <input type="checkbox"/> YES <input type="checkbox"/> NO	Other* <input type="checkbox"/>	_____
Describe: _____	Urban <input type="checkbox"/> Rural <input type="checkbox"/>	_____

COMPARISON & SELECTION: Prepared by _____ Date _____

Determination	Basis of Decision
Map/Description Selected <input type="checkbox"/>	_____
Study Required* <input type="checkbox"/>	_____
* Estimated Hours _____	_____
* Priority _____	_____

Reviewed _____ Date _____ Input Prepared _____ Date _____

SHORELINE INSPECTION NOTES

COUNTY:		WEATHER / WATER:		DATE:	
GEOGRAPHIC AREA:				SHEET OF	
RECORDER:		PHOTOGRAPHER:		OBSERVER:	
APN(S) OF INSPECTION SITE:		ACCESS:			
TIME OBSERVED:		TIDE ELEV. (REF. MLLW):			
		OBS - MHW -			
CURRENT AERIAL PHOTO(S):					
OBSERVED SHORELINE CONDITION:			INSPECTION TYPE:		SNAPSHOT REFERENCES:
<input type="checkbox"/> NATURAL <input type="checkbox"/> ARTIFICIAL			<input type="checkbox"/> CONTINUOUS <input type="checkbox"/> SPOT		
DESCRIPTION OF INFLUENCE:					SHOW ON CURRENT PHOTO:
					<input type="checkbox"/> YES <input type="checkbox"/> NO
ESTIMATED LENGTH INFLUENCED:			ELEVATION ABOVE (+) OR BELOW (-):		
			OBSERVED TIDE - MHW -		
ACTION OR PROBLEM BEING CAUSED:					
<input type="checkbox"/> ACCRETION <input type="checkbox"/> EROSION <input type="checkbox"/> PREVENT EROSION <input type="checkbox"/> OTHER (See "Remarks")					
BENEFIT:			REMARKS:		
<input type="checkbox"/> PUBLIC <input type="checkbox"/> PRIVATE <input type="checkbox"/> QUESTIONABLE					
SURVEY PROBLEMS:					
PRIORITY:					
APN(S) OF INSPECTION SITE:		ACCESS:			
TIME OBSERVED:		TIDE:			
CURRENT AERIAL PHOTO(S):					
OBSERVED SHORELINE CONDITION:			INSPECTION TYPE:		SNAPSHOT REFERENCES:
<input type="checkbox"/> NATURAL <input type="checkbox"/> ARTIFICIAL			<input type="checkbox"/> CONTINUOUS <input type="checkbox"/> SPOT		
DESCRIPTION OF INFLUENCE:					SHOW ON CURRENT PHOTO:
					<input type="checkbox"/> YES <input type="checkbox"/> NO
ESTIMATED LENGTH INFLUENCED:			ELEVATION (REF. WATER):		
			OBSERVED TIDE - MHW -		
ACTION OR PROBLEM BEING CAUSED:					
<input type="checkbox"/> ACCRETION <input type="checkbox"/> EROSION <input type="checkbox"/> PREVENT EROSION <input type="checkbox"/> OTHER (See "Remarks")					
BENEFIT:			REMARKS:		
<input type="checkbox"/> PUBLIC <input type="checkbox"/> PRIVATE <input type="checkbox"/> QUESTIONABLE					
SURVEY PROBLEMS:					
PRIORITY:					