

DEL NORTE COUNTY COAST

Inventory of Ungranted Tidelands SURVEY PRIORITY STUDY

APPENDIX C DATA SUMMARIES

RIGHT TO PASS
BY PERMISSION AND
SUBJECT TO CONTROL
OF OWNER
Sec. 1008 Civil Code
SANTA BARBARA COUNTY

State of California
State Lands Commission

1981

APPENDIX C

INVENTORY OF UNGRANTED TIDELANDS
SURVEY PRIORITY STUDY

DEL NORTE
DATA SUMMARIES

THESE APPENDICES ARE ONLY APPURTENANT TO THE MAIN REPORT
AND REPRESENT ONLY A FRACTION OF THE TOTAL DATA.

PREPARED BY THE STAFF OF THE
CALIFORNIA STATE LANDS COMMISSION
IN RESPONSE TO CHAPTER 706, STATUTES OF 1975

APPENDIX C

INTRODUCTION

A data summary has been prepared for each of the coastal counties of California and for the offshore islands. These summaries are attached as Appendix C, to the Report to the Legislature of the Inventory of Ungranted Tidelands. The inventory and the report were mandated by Public Resources Code Sections 6331 et seq.

The Tidelands Inventory program of the California State Lands Commission has, as its initial objective, the gathering and analyzing of data sufficient to enable the Commission staff to rationally plan a long-term boundary program for ungranted State-owned tidelands.

Analysis of the data summarized here has been limited to that level required to assign priorities to the various regions of the California coast for further, more in-depth study, which will lead toward actual mapping of State ownership.

This summary is limited in scope to the open seacoast of the State. Bays, rivers, estuaries, and lagoons will be covered in a later report. It is further limited to lands not granted in trust to other public agencies by the California Legislature.

Determinations resulting from an analysis of the data gathered were made solely with a view to establishing priorities, and should not be taken as an official position by either the Commission or Commission staff. For example, certain observations about possible artificial conditions at various sites have been made. These observations were based upon a preliminary examination of direct evidence (e.g., airphotos) of either current or historical artificial structures at or near the particular site. More in-depth investigations may well disclose other, more remote, artificial conditions at the site, which may affect the location of the boundary of State ownership.

TABLE OF CONTENTS APPENDIX C

MAP INDEXES

YELLOW PAGES

The base maps were prepared from U.S. Geological Survey 7½ minute quadrangle sheets. The final map is in black and white with elevation contours, roads, buildings, section lines, rivers, etc., but without the usual color overlays. The map covers a somewhat smaller area than the USGS quad sheets in order to reproduce them at half scale (1:48,000) on an 8½ x 11 standard sheet. The maps have been laid out with the shoreline approximately along the vertical center of the sheet. Shoreline mileage is listed along the waterward side and is the same shoreline identification system used by other public agencies, also listed on landward side are the summary map numbers. (Note: the shoreline mileage shown may not agree with the length determined, and used, by this inventory and listed within the data summaries by parcel. This discrepancy results because the inventory measurements were made from public records).

SUMMARY MAP

WHITE PAGES

The base maps for these pictorial summaries are the 1976-77 county assessor's plats. Shown on these maps are the upland parcels selected for study, artificial features, the limits of publicly-owned land, pertinent maps and court cases, and boundary line agreement locations. The data is symbolized according to the legend on the maps.

DATA SUMMARIES, BY PARCEL

PINK PAGES

These are computer print-outs which summarize the data accumulated during the inventory for each study parcel. The last column provides a means for the State Lands Commission's staff to categorize the types and degrees of problems existing for each parcel.

The information listed in these print-outs has been summarized. Consequently, what is shown may not be the exact wording or condition existing.

The study parcels are listed from north to south by a page/line number. This two-part number was assigned during the inventory. The first portion of the number is the Summary Map page number as assigned by staff. The second part is the individual parcel number given to the selected parcels in a consecutive north-south order for each Summary Map page. The page/line number is used throughout the inventory files to identify each inventory parcel. It is arbitrary, and should not be confused with assessor's parcel numbers. (Following the Data Summaries print-outs is a cross-reference from assessor's parcel numbers to the page/line numbers.)

INVENTORY FILES

GREEN PAGES

As required by the Public Resources Code, data obtained during the inventory are filed and are available for public inspection. This section provides a guide to what is obtainable and where to find it.

[Faint, illegible text, likely bleed-through from the reverse side of the page.]

[Faint, illegible text, likely bleed-through from the reverse side of the page.]

[Faint, illegible text, likely bleed-through from the reverse side of the page.]

[Faint, illegible text, likely bleed-through from the reverse side of the page.]

**INDEX
MAPS**

DEL NORTE CO.

PACIFIC
OCEAN



SCALE ONE MILE

INDEX MAP

DEL NORTE COUNTY
SUMMARY MAPS 1 - 15

LEGEND:

- SUMMARY MAP LIMITS
- - - GRANTED LANDS LIMITS
- SHORELINE MILEAGE POINT

NOTE: LOCATIONS ARE APPROXIMATE.

INVENTORY OF UNGRANTED TIDELANDS

STATE OF CALIFORNIA

STATE LANDS COMMISSION

MAP
NUMBER **1**



PACIFIC
OCEAN

P E L L I C A N
B A Y
P E L L I C A N

15

16

12

17

18

19

14



0 1/2 1
SCALE ONE MILE

LEGEND:

— SUMMARY MAP LIMITS

--- GRANTED LANDS LIMITS

⊙ SHORELINE MILEAGE POINT

NOTE: LOCATIONS ARE APPROXIMATE.

INDEX MAP

INVENTORY OF UNGRANTED TIDELANDS

STATE OF CALIFORNIA

STATE LANDS COMMISSION

DEL NORTE COUNTY
SUMMARY MAPS 16 - 19

MAP
NUMBER **2**

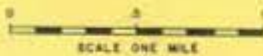
PACIFIC
OCEAN

GRANT TO THE
CITY OF CRESCENT CITY

G 03-01

GRANT TO THE
CRESCENT CITY HARBOR DISTRICT

G 03-02



SCALE ONE MILE

INDEX MAP

DEL NORTE COUNTY
SUMMARY MAPS 10 - 24

LEGEND:

- SUMMARY MAP LIMITS
- GRANTED LANDS LIMITS
- ⊙ SHORELINE MILEAGE POINT

NOTE: LOCATIONS ARE APPROXIMATE.

INVENTORY OF UNGRANTED TIDELANDS

STATE OF CALIFORNIA

STATE LANDS COMMISSION

MAP
NUMBER **3**

1981

GRANT TO THE
CRESCENT CITY HARBOR DISTRICT

G 03 - 02

PACIFIC
OCEAN



INDEX MAP

DEL NORTE COUNTY
SUMMARY MAPS 25-27

LEGEND:

— SUMMARY MAP LIMITS

--- GRANTED LANDS LIMITS

● SHORELINE MILEAGE POINT

NOTE: LOCATIONS ARE APPROXIMATE.

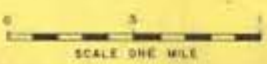
INVENTORY OF UNGRANTED TIDELANDS

STATE OF CALIFORNIA

STATE LANDS COMMISSION

MAP
NUMBER **4**

PACIFIC
OCEAN



INDEX MAP

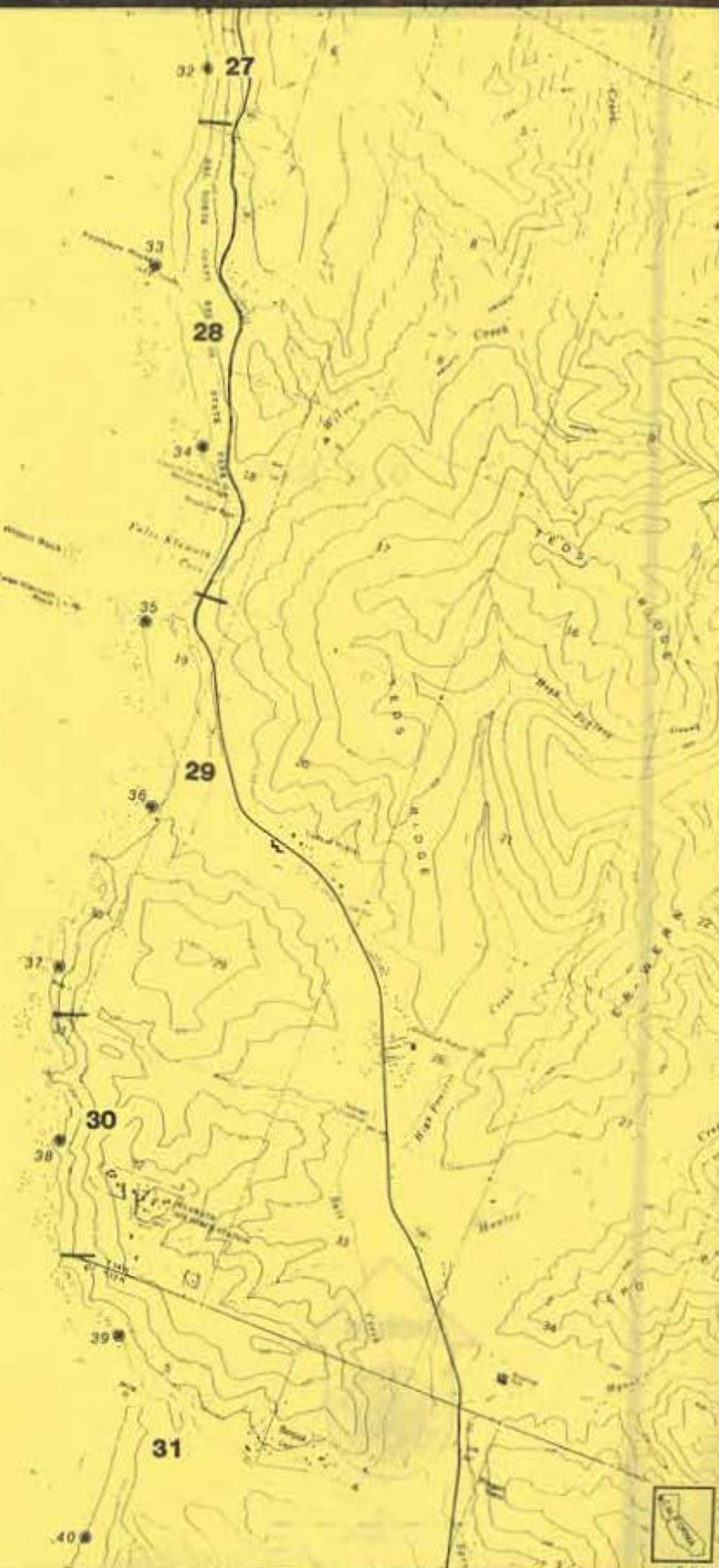
DEL NORTE COUNTY
SUMMARY MAPS 27-31

- LEGEND:**
- SUMMARY MAP LIMITS
 - - - GRANTED LANDS LIMITS
 - ⊙ SHORELINE MILEAGE POINT
- NOTE: LOCATIONS ARE APPROXIMATE.

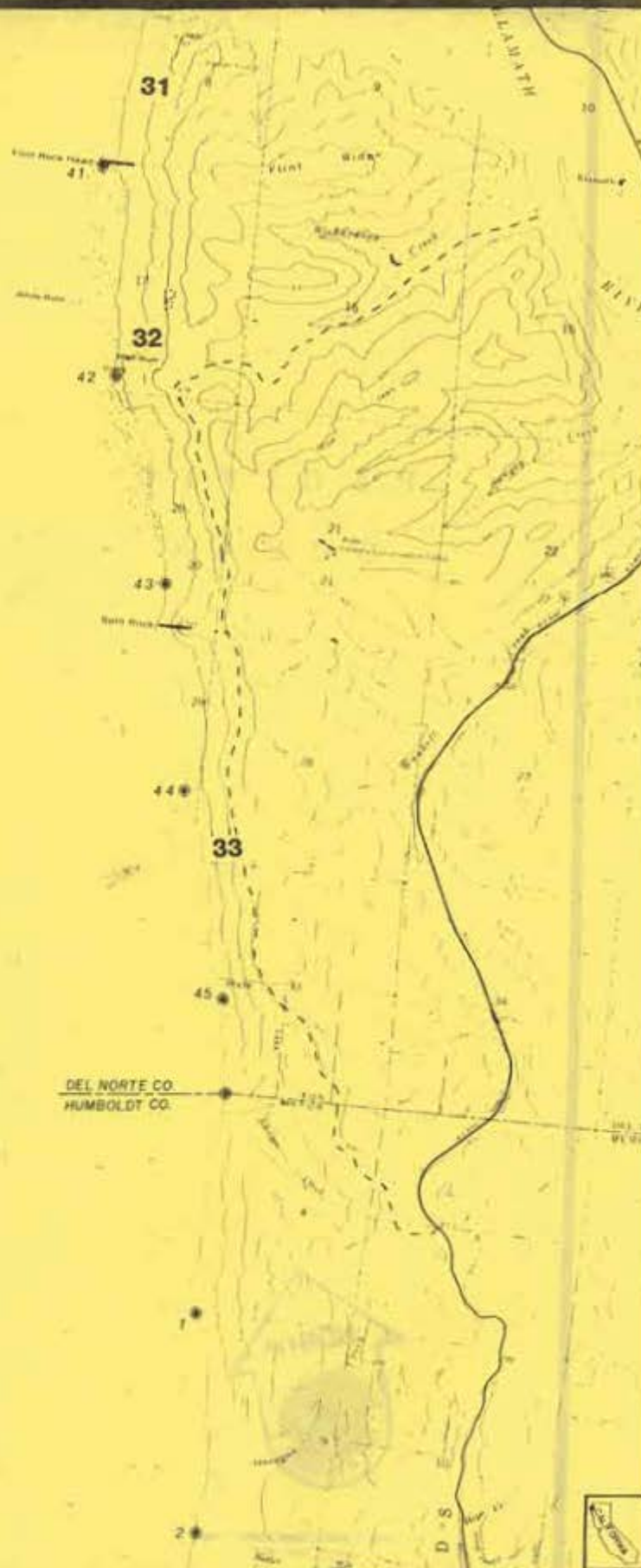
INVENTORY OF UNGRANTED TIDELANDS

STATE OF CALIFORNIA STATE LANDS COMMISSION

MAP NUMBER 5



PACIFIC
OCEAN



LEGEND:
—— SUMMARY MAP LIMITS
- - - GRANTED LANDS LIMITS
● SHORELINE MILEAGE POINT
NOTE: LOCATIONS ARE APPROXIMATE.

INDEX MAP
INVENTORY OF UNGRANTED TIDELANDS
STATE OF CALIFORNIA STATE LANDS COMMISSION

DEL NORTE COUNTY
SUMMARY MAPS 31-33
MAP NUMBER 6

SUMMARY MAP LEGEND

The map is divided into four quadrants by the center line of the main road. The quadrants are labeled as follows:

- Top Left: 1000
- Top Right: 2000
- Bottom Left: 3000
- Bottom Right: 4000

SUMMARY MAPS

The map is divided into four quadrants by the center line of the main road. The quadrants are labeled as follows:









- Top Left: 1000
- Top Right: 2000
- Bottom Left: 3000
- Bottom Right: 4000

1000
2000
3000
4000

The map is divided into four quadrants by the center line of the main road. The quadrants are labeled as follows:

- Top Left: 1000
- Top Right: 2000
- Bottom Left: 3000
- Bottom Right: 4000

SUMMARY MAP LEGEND

	Line number, second part of SLC inventory number
	Groin, jetty, breakwater, etc.
	Shore protection, seawall, riprap, etc.
	Pier
	Other types of artificial features or actions
	Historical artificial features
	Continuous artificial features
	Limits of publicly owned land
	CA-State of California
	CI-City
	CO-County
	REG-Regional eg,sewer district
	US-United States(Federal)
SIR 1/2/77	Shoreline Inspection Report
2020 SC SON	Court case notation
	2020-case number, SC-Superior Court,
	SON-Sonoma County
CMF	Maps filed in State Lands Commission
CB	Microfilm or Map Library

- (1) Most maps listed on the Summary Maps are filed in the State Lands Commission Microfilm or Map Library by the letter designations listed. Recording data is also listed if it is available. Maps that are relatively easy to obtain or subject to change were not indexed, such as Parks and Recreation (P&R) Acquisition or Ownership Maps. However, they are pertinent to the "inventory" and are listed.

POR SEC 32 T.19N., R.1W., HB 8M

101-5

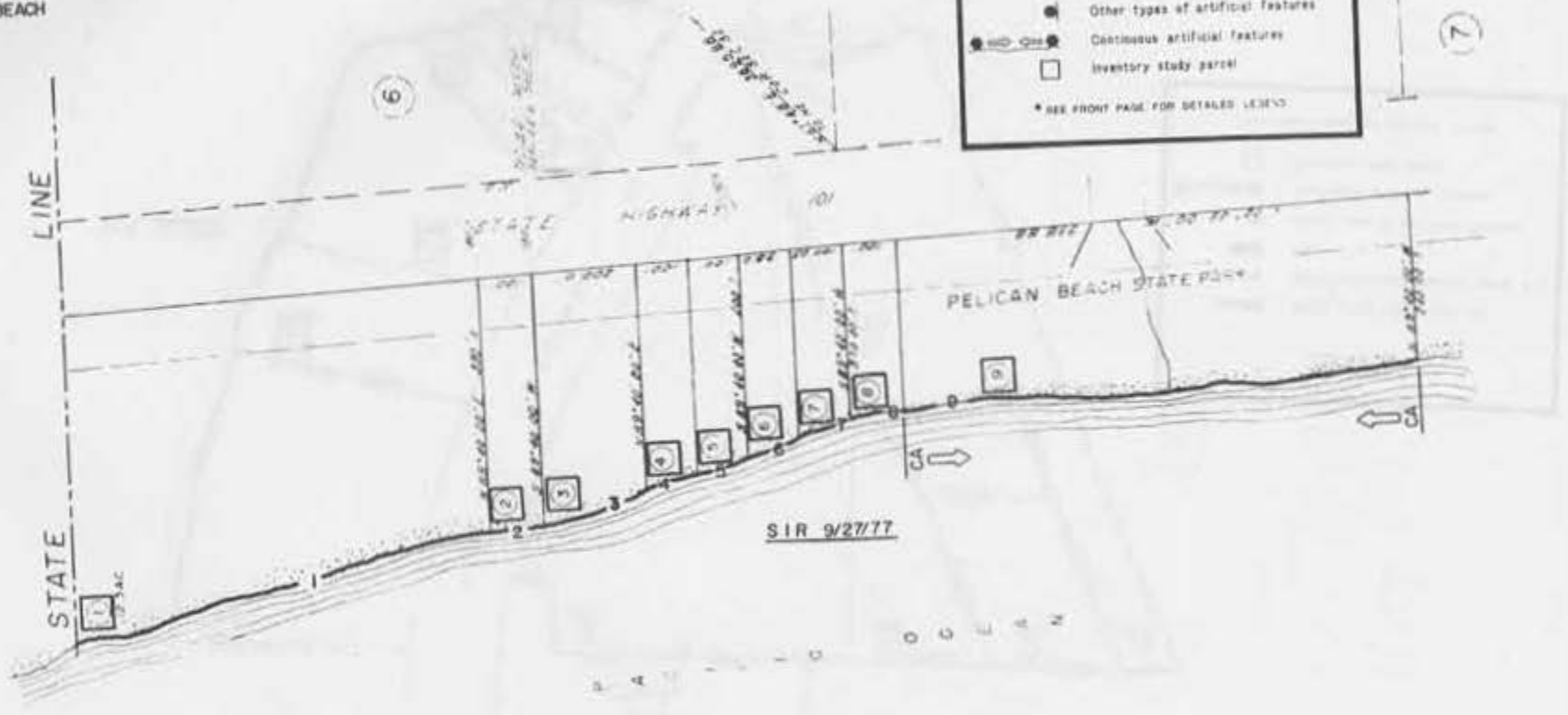
MAPS

CMF 843-RS 3/42
P & R OWN. MAP NO. 64
PELICAN STATE BEACH

LEGEND*

- ◆◆◆◆ Grain, jetty, breakwater, etc.
- ▲-▲-▲-▲- Shore protection, seawall, riprap, etc.
- ▬ Piers
- Other types of artificial features
- Continuous artificial features
- Inventory study parcel

* SEE FRONT PAGE FOR DETAILED LEGEND



NOTE: LOCATIONS OF DATA ARE APPROXIMATE.

MAPS

CMF 861-RS 3/37
 CMF 1557-PM 1/43



LEGEND*

- Groin, jetty, breakwater, etc.
- Shore protection, seawall, riprap, etc.
- ▬ Piers
- Other types of artificial features
- ◉ Continuous artificial features
- Inventory study parcel

* SEE FRONT PAGE FOR DETAILED LEGEND

NOTE: LOCATIONS OF DATA ARE APPROXIMATE.

SECS 4,5,8&9 T.18N.,R.1W.,H.B.&M

101-2

SIR 9/27/77



P
A
C
I
F
I
C

O
C
E
A
N

LEGEND*

- Grain, jetty, breakwater, etc.
- — — — Shore protection, seawall, riprap, etc.
- — — — Piers
- Other types of artificial features
- — — — Continuous artificial features
- Inventory Study parcel

* SEE FRONT PAGE FOR DETAILED LEGEND

NOTE: LOCATIONS OF DATA ARE APPROXIMATE.

POR SEC 5 T.18N., R.1W H.B. & M.
PELICAN BEACH PALISADES SUBDN
M.O.R. BK.4, PG.198

MAPS

CMF 860-PELICAN BEACH PALISADES, SD 4/198

LEGEND*

- ++++ Grain, jetty, breakwater, etc.
- - - - - Shore protection, seawall, riprap, etc.
- ▬ Pier
- Other types of artificial features
- Continuous artificial features
- Inventory study parcel

* SEE FRONT PAGE FOR DETAILED LEGEND

NOTE: LOCATIONS OF DATA ARE APPROXIMATE.



SECS 4,5,8&9 T.18N., R.1W., H.B.&M

101-2

MAPS

CMF 2069-RS 3/115
CMF 2104-PM 3/24

SIR 9/27/77

P
A
C
I
F
I
C

O
C
E
A
N

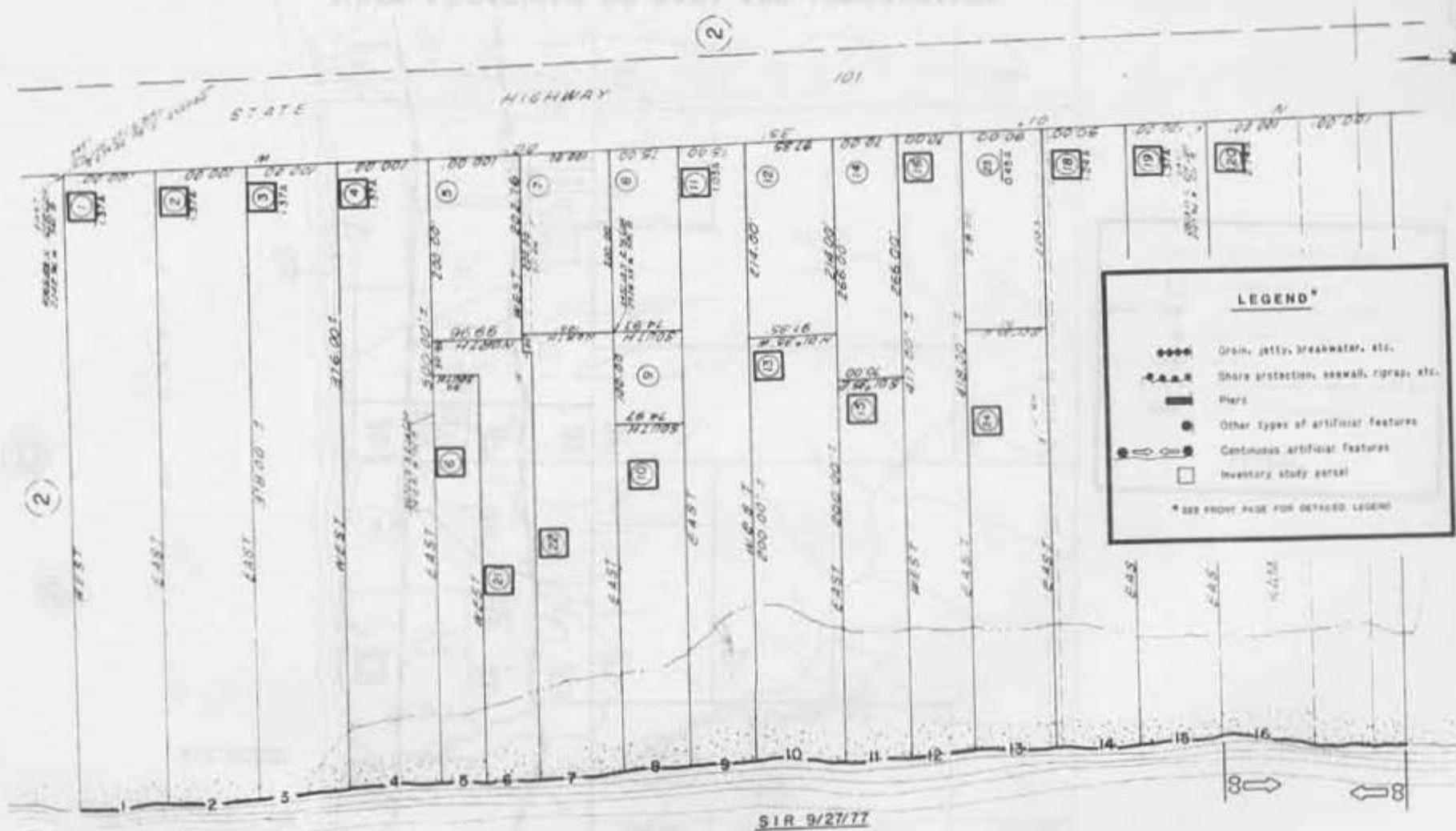


LEGEND*

- Groin, jetty, breakwater, etc.
- - - - - Shore protection, seawall, riprap, etc.
- ==== Piers
- Other types of artificial features
- Continuous artificial features
- Inventory study parcel

* SEE FRONT PAGE FOR DETAILED LEGEND

NOTE: LOCATIONS OF DATA ARE APPROXIMATE.



MAPS
 CMF 842-RS 4/18
 CMF 856-RS 6/45
 CMF 864-RS 5/171
 CMF 1555-RM 1/141
 CMF 1560-RS 3/51

NOTE: LOCATIONS OF DATA ARE APPROXIMATE.

SECS 4,5,8&9 T.18N.,R.1W.,HB&M

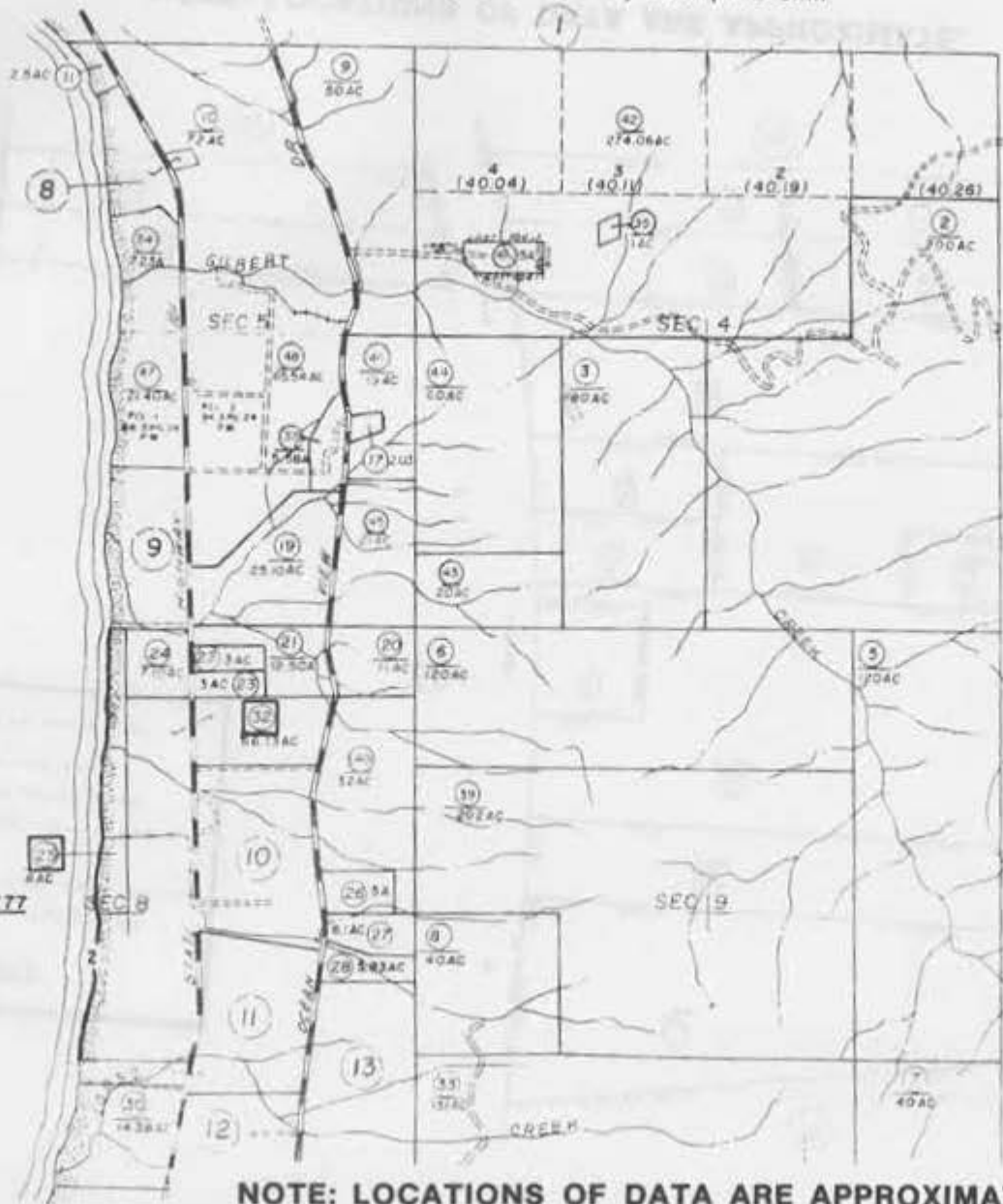
101-2

MAPS
CMF 1560-RS 3/51
CMF 1561-RS 3/49

P
A
C
I
F
I
C

O
C
E
A
N

S.I.R. 9/27/77



LEGEND*

- ◆◆◆◆ Drain, jetty, breakwater, etc.
- Shore protection, seawall, etc.
- ▬▬▬ Dike
- Other types of artificial features
- Continuous artificial features
- Inventory study parcel

* SEE FRONT PAGE FOR DETAILED LEGEND

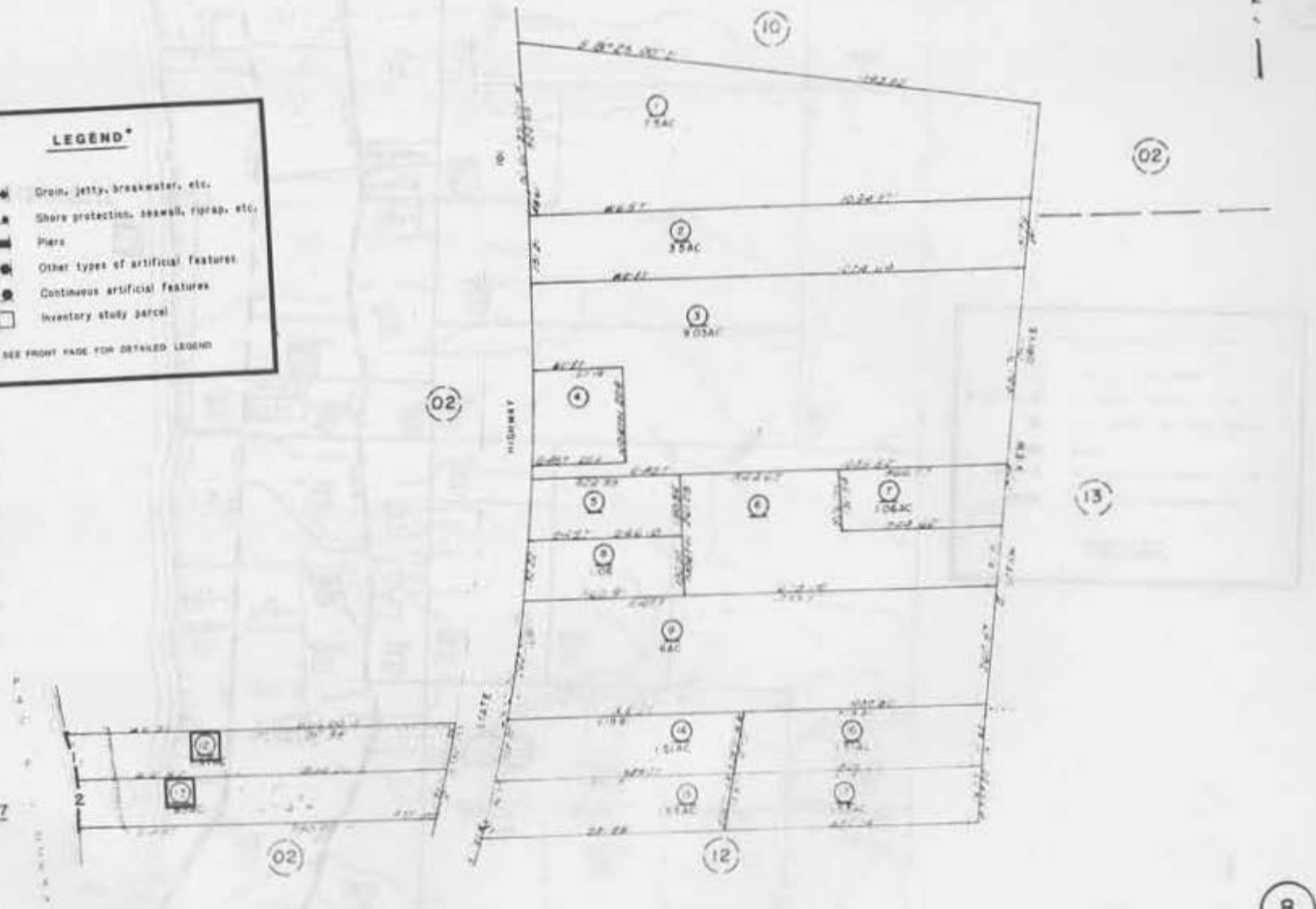
NOTE: LOCATIONS OF DATA ARE APPROXIMATE.

LEGEND*

- ◆◆◆◆ Groin, jetty, breakwater, etc.
- Shore protection, seawall, riprap, etc.
- ▬ Piers
- Other types of artificial features
- Continuous artificial features
- Inventory study parcel

* SEE FRONT PAGE FOR DETAILED LEGEND

SIR 9/27/77



NOTE: LOCATIONS OF DATA ARE APPROXIMATE.

SECS 4,5,8&9 T.18N.,R.1W.,H.B. & M

101-2

MAPS
CMF 1561-RS 3/49

P
A
C
I
F
I
C

O
C
E
A
N



LEGEND*

- ◆◆◆◆ Grown, jetty, breakwater, etc.
- - - - - Shore protection, seawall, riprap, etc.
- ▬ Piers
- Other types of artificial features
- Deephouse artificial features
- Inventory study parcel

* See previous page for detailed legend

SIR 9/27/77

NOTE: LOCATIONS OF DATA ARE APPROXIMATE.

SMITH RIVER RANCHERIA SUBD.

FOR SEC. 17, T.18N., R.1W., HB & M.

BK 4 PG. 118-124

BK 4 PG. 204-208 (revised)

MAPS

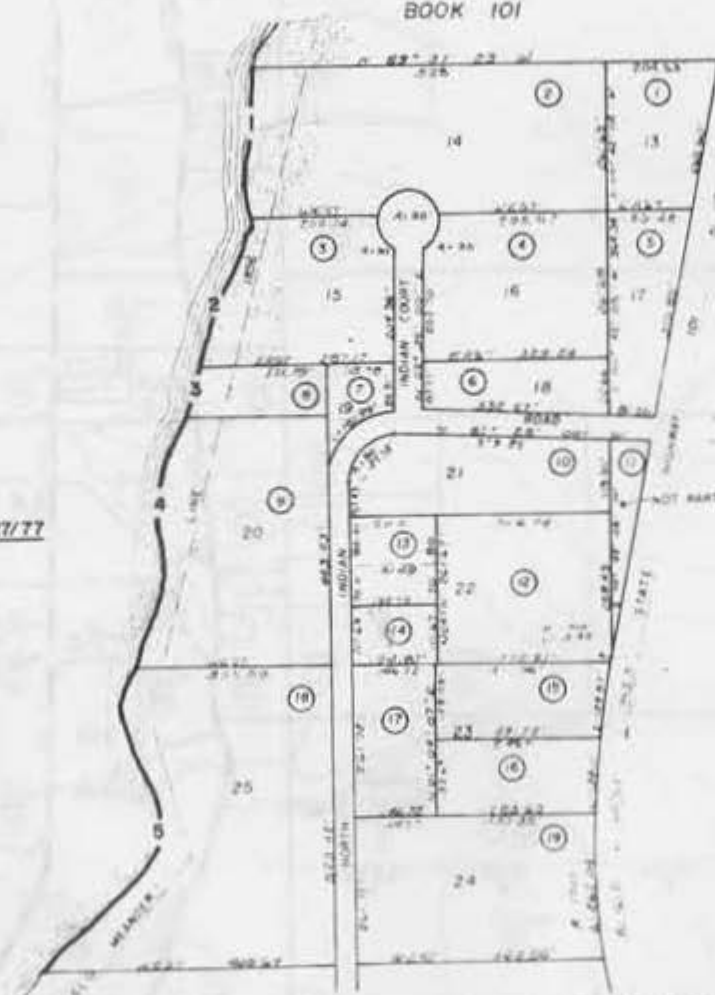
CMF 854- SMITH RIVER RANCHERIA SUBD., SD 4/204

P
A
C
I
F
I
C

O
C
E
A
N

SIR 9/27/77

BOOK 101



LEGEND*

- ◆◆◆◆ Grain, jetty, breakwater, etc.
- Shore protection, seawall, riprap, etc.
- ▬ Piers
- Other types of artificial features
- ▬ Continuous artificial features
- Inventory study parcel

* SEE FRONT PAGE FOR DETAILED LEGEND

NOTE: LOCATIONS OF DATA ARE APPROXIMATE.

SMITH RIVER RANCHERIA SUBD.

FOR SEC. 17, T.16N., R.1W., H.B. & M.

BK. 4 PG. 118 - 124

BK. 4 PG. 204 - 208 (revised)

MAPS

CMF 854-SMITH RIVER RANCHERIA SUBD., SD 4/204

CMF 858-RS 5/124

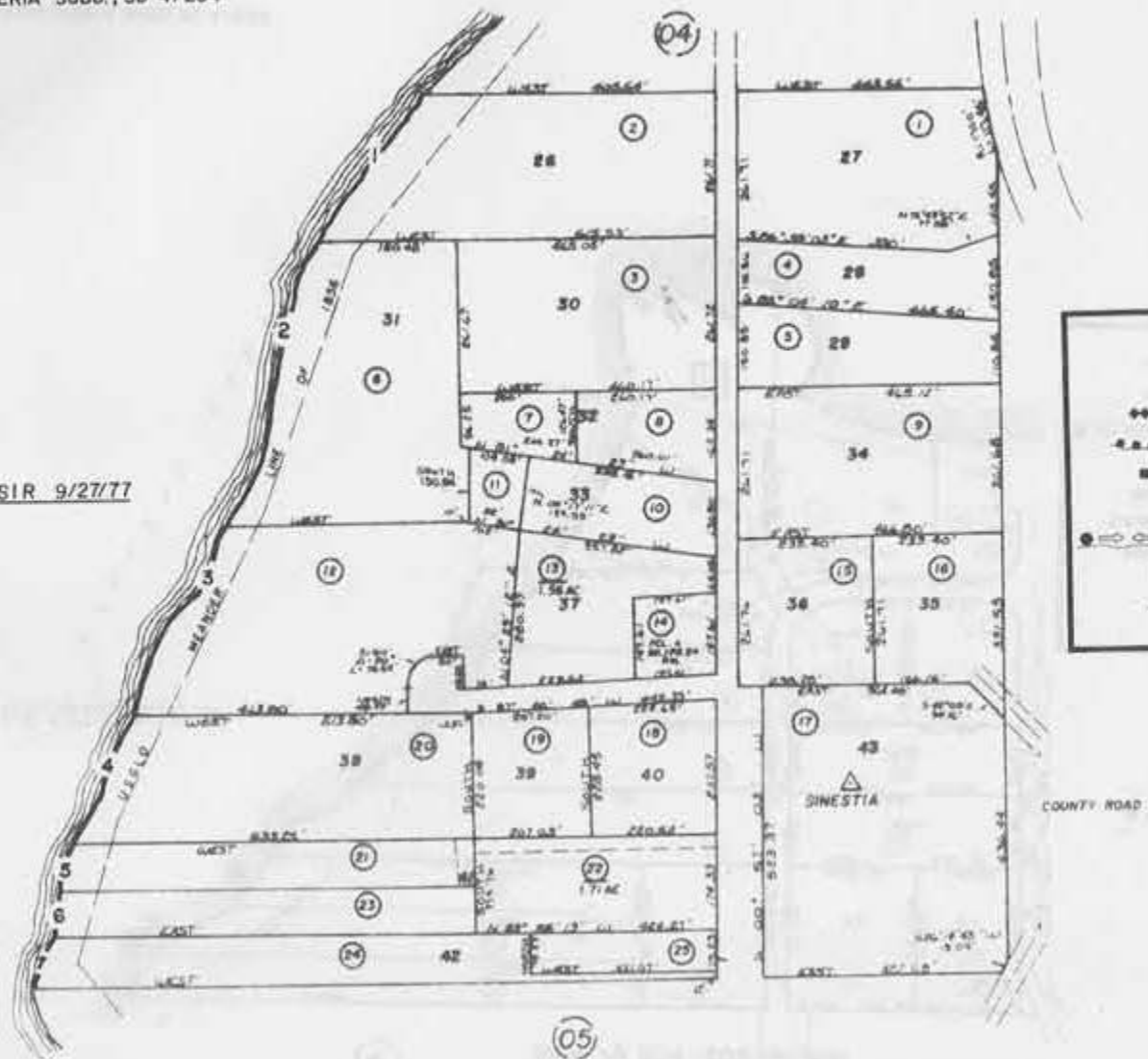
CMF 2103-RM 1/22



P
A
C
I
F
I
C

O
C
E
A
N

SIR 9/27/77



LEGEND*

- ◆◆◆◆ Groin, jetty, breakwater, etc.
- ▲▲▲▲ Shore protection, seawall, riprap, etc.
- ▬ Piers
- Other types of artificial features
- Continuous artificial features
- Inventory study parcel

* SEE FRONT PAGE FOR DETAILED LEGEND.

NOTE: LOCATIONS OF DATA ARE APPROXIMATE.

SMITH RIVER RANCHERIA SUBDN

POR SEC 17 T18N RIW HM

Bk 4 Pg 118-124

Bk 4 Pg 204-208 (revised)



SIR 9/27/77, 8/29/78

LEGEND*

- ◆◆◆◆ Grain, jetty, breakwater, etc.
- - - - - Shore protection, seawall, riprap, etc.
- ▬ Piers
- Other types of artificial features
- Inventory study parcel
- Inventory study parcel

* SEE FRONT PAGE FOR DETAILED LEGEND

MAPS

- CMF 846-RS 5/72
- CMF 854-SMITH RIVER RANCHERIA SUBD, SD 4/204
- CMF 855-RS 7/23
- CMF 857-RS 6/51
- CMF 2102-RM1/7

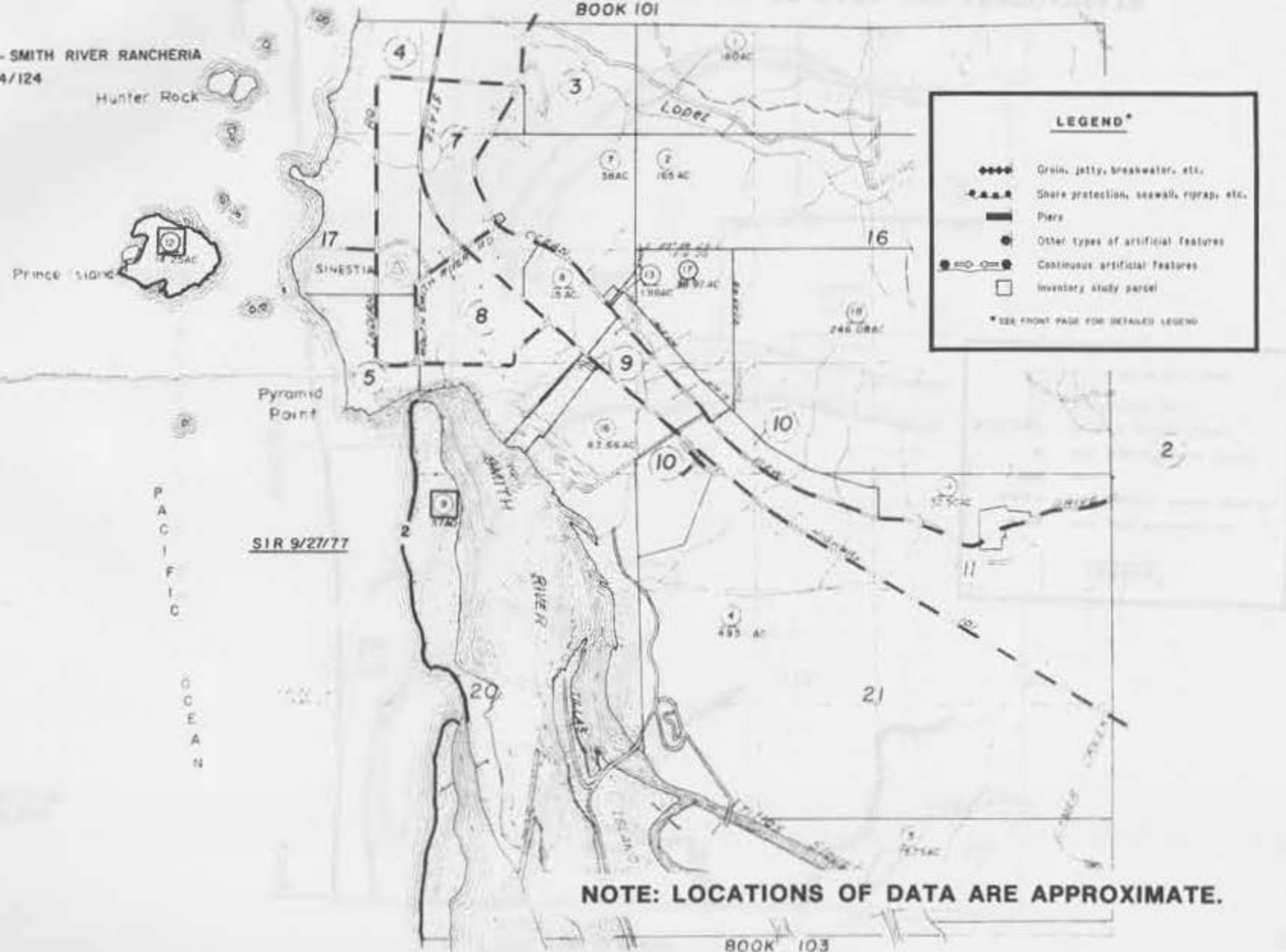
NOTE: LOCATIONS OF DATA ARE APPROXIMATE.

T.18N., R.1W. H.8.&M.

102-1

MAPS

CMF 2101-SMITH RIVER RANCHERIA
SD 4/124



LEGEND*

- ◆◆◆◆ Grain, jetty, breakwater, etc.
- - - - - Shore protection, seawall, riprap, etc.
- ▬ Piers
- Other types of artificial features
- Continuous artificial features
- Inventory study parcel

* SEE FRONT PAGE FOR DETAILED LEGEND

NOTE: LOCATIONS OF DATA ARE APPROXIMATE.

MAPS

CMF 1559 - RS 2/14
CMF 2098 - MS 3/35

PACIFIC OCEAN

SIR 9/27/77



LEGEND*

- ◆◆◆◆ Grain, jetty, breakwater, etc.
- Shore protection, seawall, riprap, etc.
- ▬ Piers
- Other types of artificial features
- Continuous artificial features
- Inventory study parcel

* SEE FRONT PAGE FOR DETAILED LEGEND

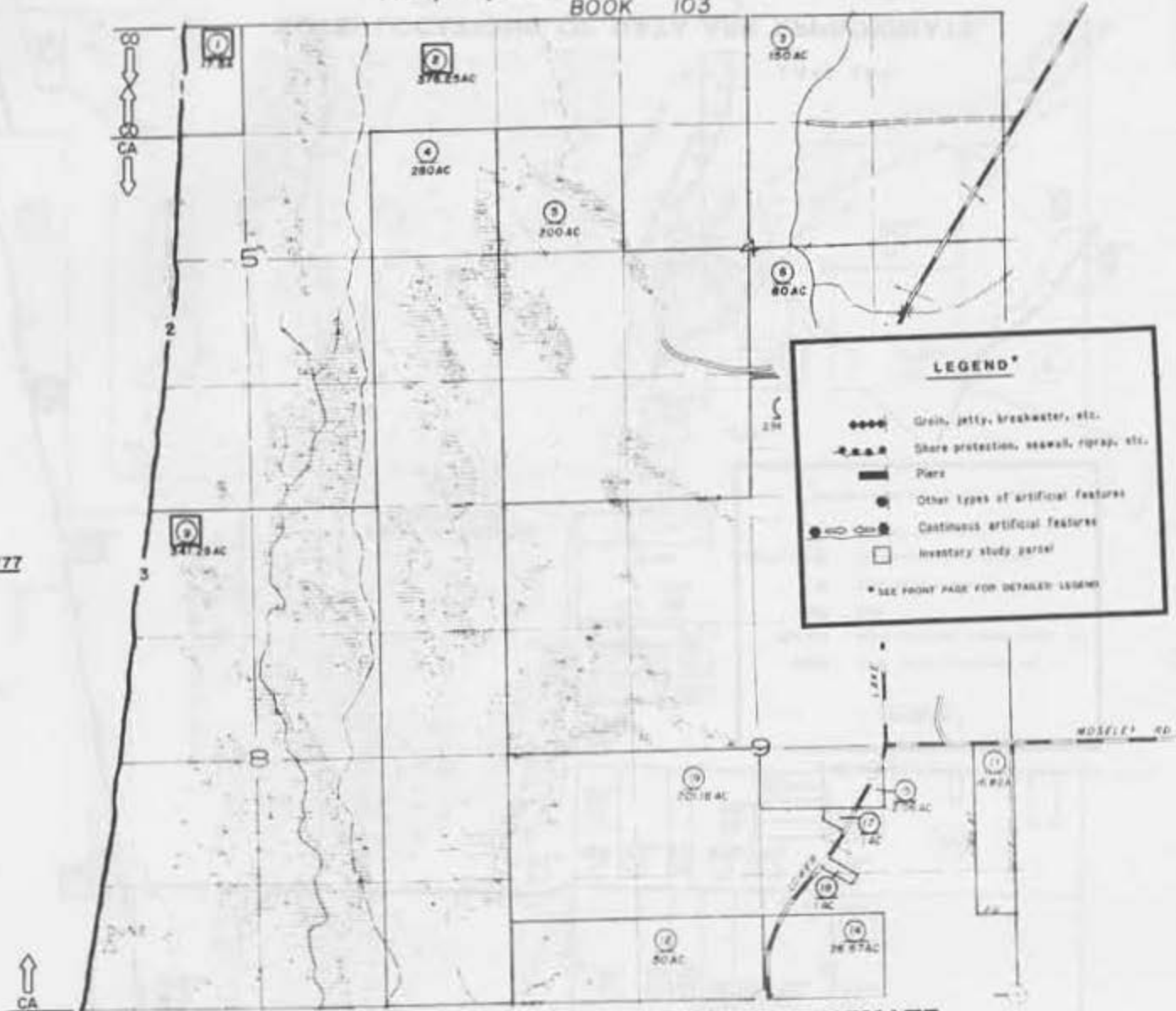
NOTE: LOCATIONS OF DATA ARE APPROXIMATE.
BOOK 105

MAPS
CMF 1559-SURVEY NO. 196, RS 2/14

P
A
C
I
F
I
C

O
C
E
A
N

SIR 9/21/77

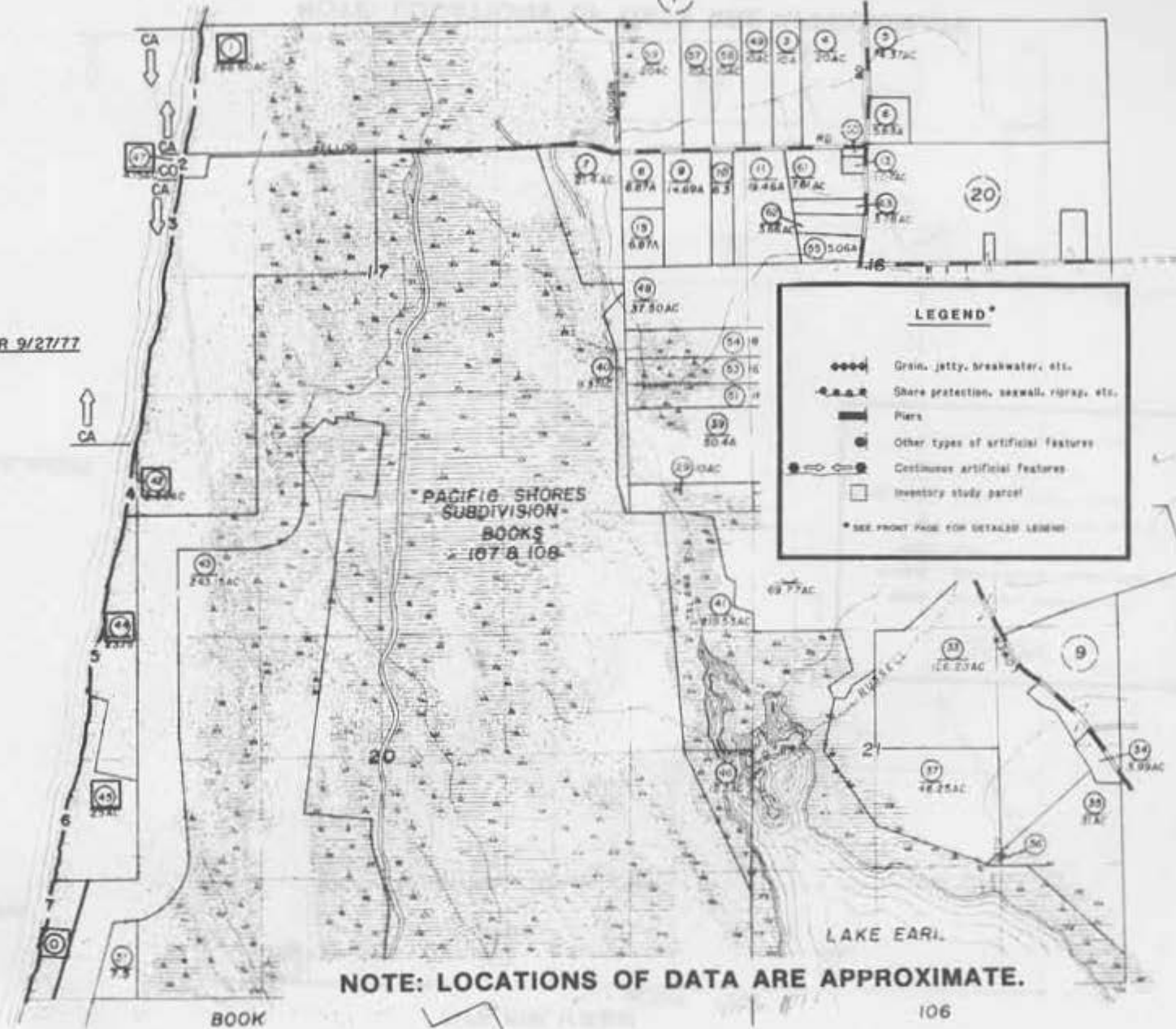


NOTE: LOCATIONS OF DATA ARE APPROXIMATE.

P
A
C
I
F
I
C

O
C
E
A
N

SIR 9/27/77



T.17N., R.1W., H.B.&M.

BOOK

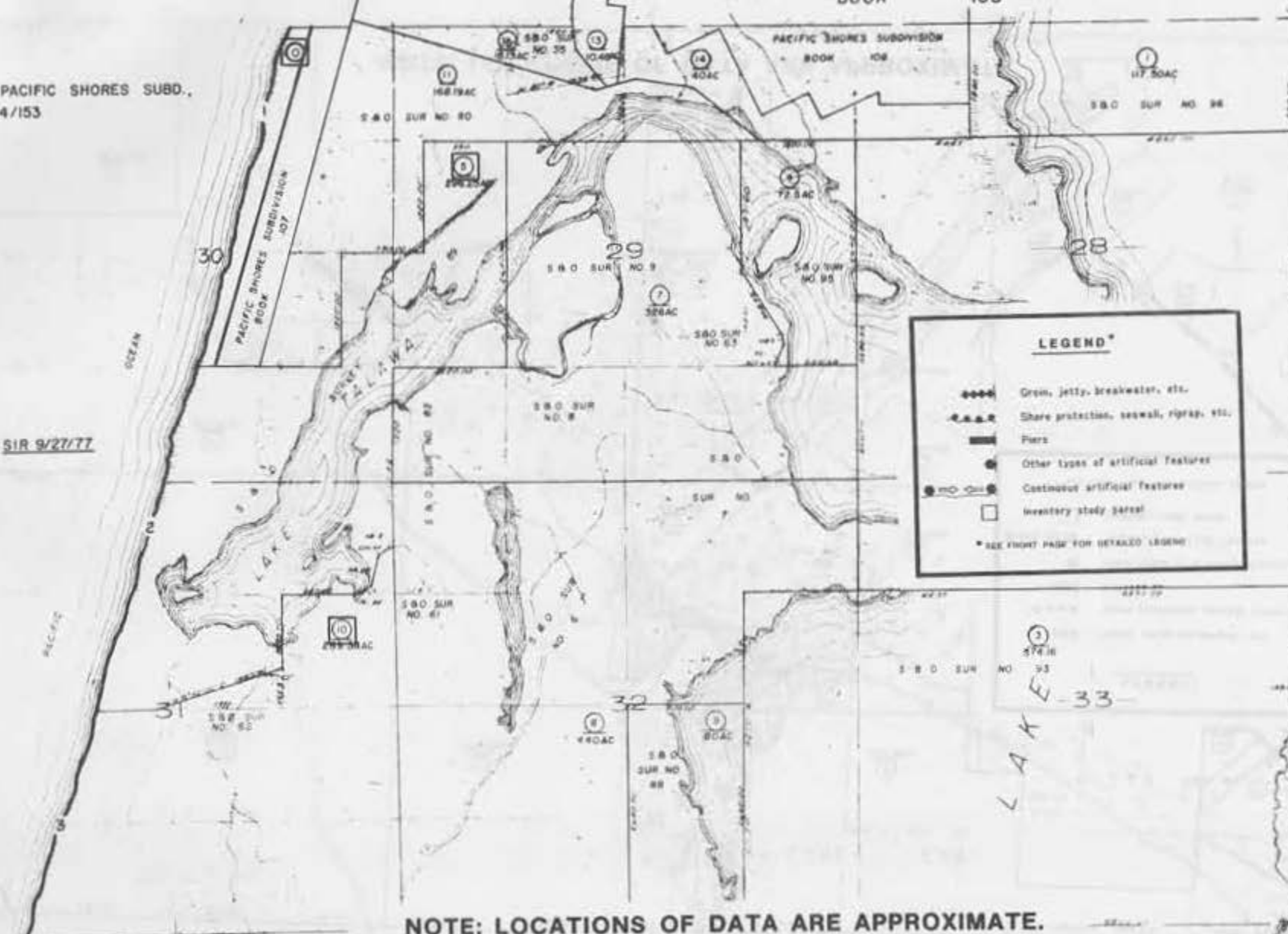
105

106-01

MAPS

CMF 853-PACIFIC SHORES SUBD.,
SD 4/153

SIR 9/27/77



LEGEND*

- Groin, jetty, breakwater, etc.
- Shore protection, seawall, riprap, etc.
- Piers
- Other types of artificial features
- Continuous artificial features
- Inventory study parcel

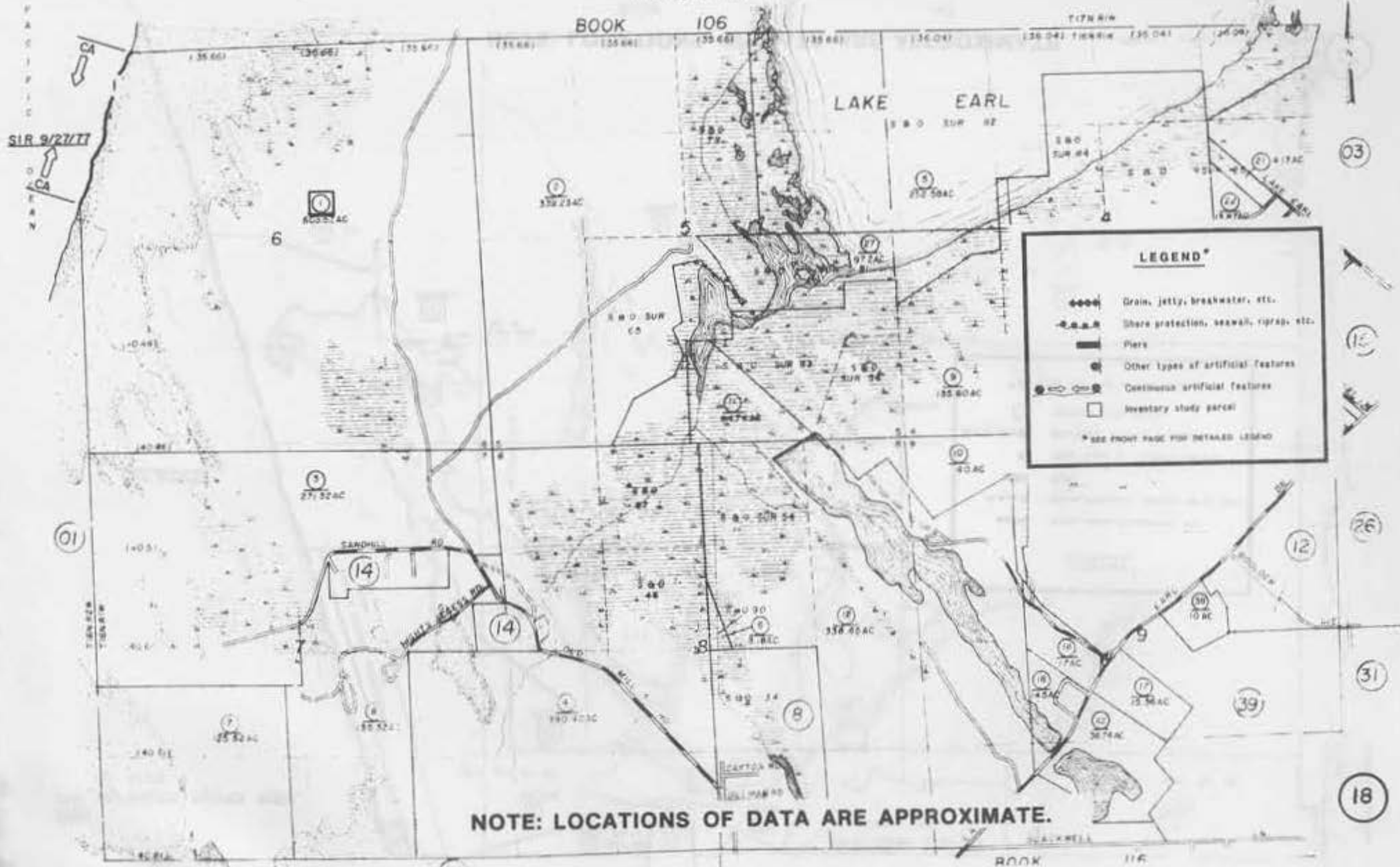
* SEE FRONT PAGE FOR DETAILED LEGEND

NOTE: LOCATIONS OF DATA ARE APPROXIMATE.

BOOK

110

17



MAPS

CMF 862- RS 5/138

SEC. 18 T16N, R1W, H.B&M
SEC. 1, 12, 13 & 14 T16N, R2W

LEGEND*

- ▬▬▬▬▬ Groin, jetty, breakwater, etc.
- ▬▬▬▬▬ Shore protection, seawall, riprap, etc.
- ▬▬▬▬▬ Piers
- Other types of artificial features
- Contiguous artificial features
- Inventory study parcel

* SEE PRINT PAGE FOR DETAILED LEGEND



NOTE: LOCATIONS OF DATA ARE APPROXIMATE.

SEC'S 19,30 & POR. SEC'S 20 & 29 T.16N,R.1W,H.B.8M.
SEC 24 T.16N,R.2W,H.B.8M.



LEGEND*

- Grn. jetty, breakwater, etc.
- ▲—▲—▲— Shore protection, seawall, riprap, etc.
- ▬ Piers
- Other types of artificial features
- Continuous artificial features
- Inventory study parcel

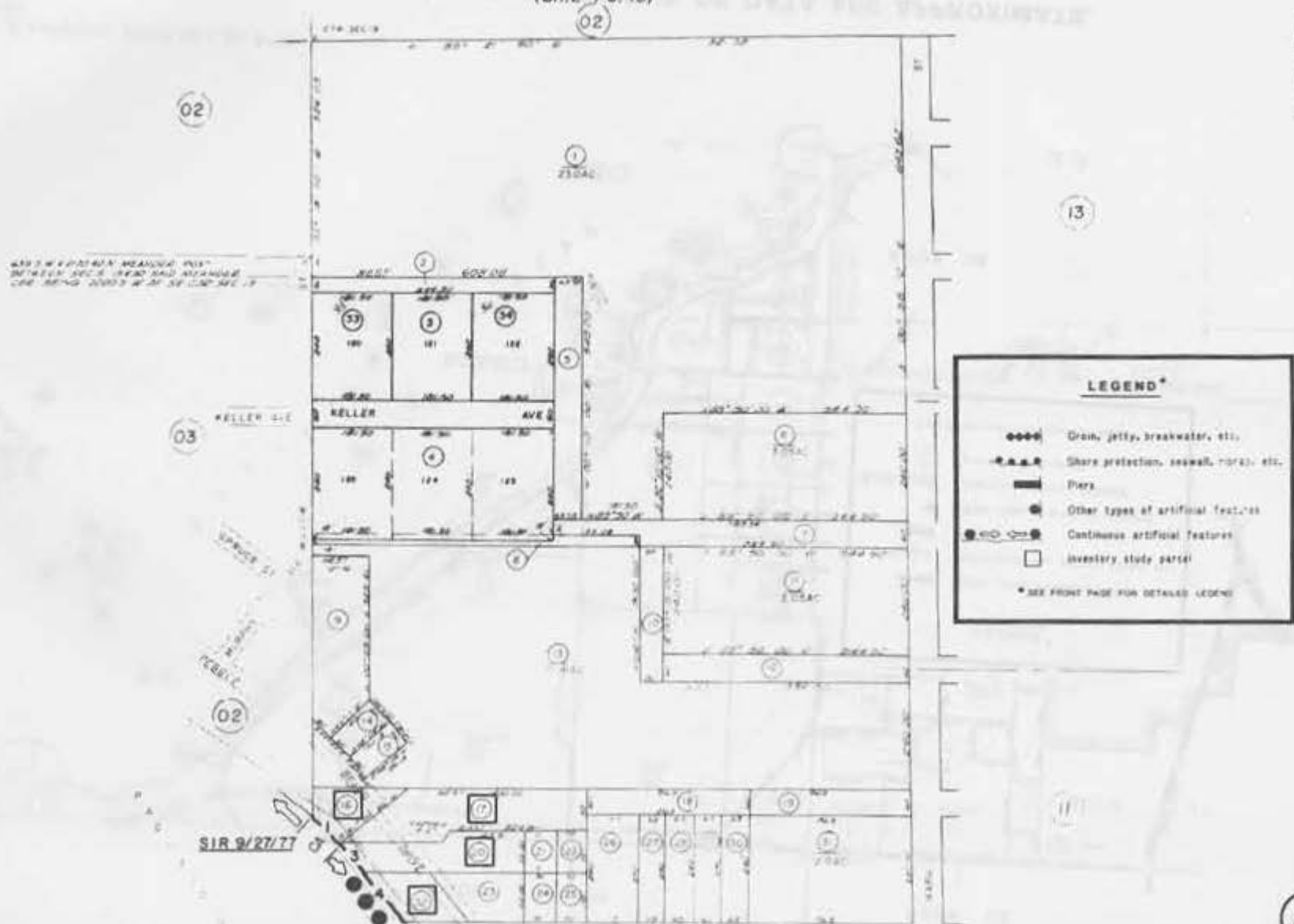
* SEE FRONT PAGE FOR DETAILED LEGEND

MAPS
 CMF 862-RS 5/138
 CMF 2100-RM 2/132

NOTE: LOCATIONS OF DATA ARE APPROXIMATE.

POR. SE 1/4 SEC. 19 T. 16N., R. 1W., H. B. & M.
 POR. PEBBLE BEACH TRACT UNIT 1
 (BK. 2 PG. 43)

120-04



NOTE: LOCATIONS OF DATA ARE APPROXIMATE.

SEC'S 19,30 & POR. SEC'S 20 & 29 T.16N., R.1W., H.B. 8M.
SEC 24 T.16N., R.2W., H.B. 8M.



MAPS
CMF 848-PLAT OF CRESCENT BEACH NO. 1, SD 2/50
CMF 1554-SD 4/22

NOTE: LOCATIONS OF DATA ARE APPROXIMATE.

POR. SEC 30, T.16N., R.1W., H.B.&M.

120-29

LEGEND*

- Grain, jetty, breakwater, etc.
- Shore protection, seawall, riprap, etc.
- ▬ Piers
- Other types of artificial features
- Continuous artificial features
- Inventory study parcel

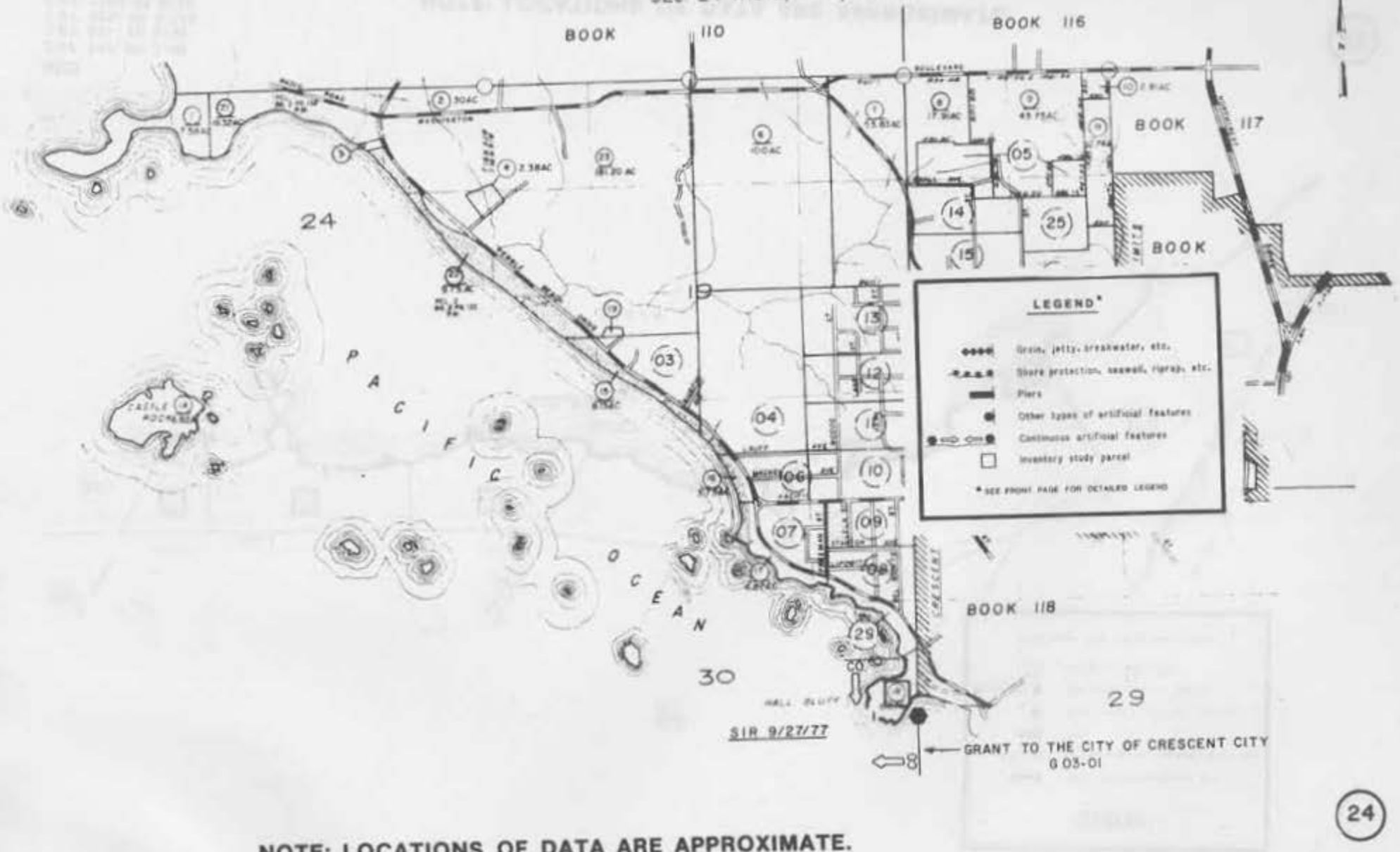
* SEE FRONT PAGE FOR DETAILED LEGEND



- MAPS**
- CMF 847-SD 2/45
 - CMF 851-SD 2/32
 - CMF 859-RS 6/136
 - CMF 2096-RS 6/56
 - CMF 2097-RS 6/95

NOTE: LOCATIONS OF DATA ARE APPROXIMATE.

SEC'S 19,30 & POR. SEC'S 20 & 29 T.16N.,R.1W.,HB 8M.
SEC 24 T.16N.,R.2W.,HB 8M.



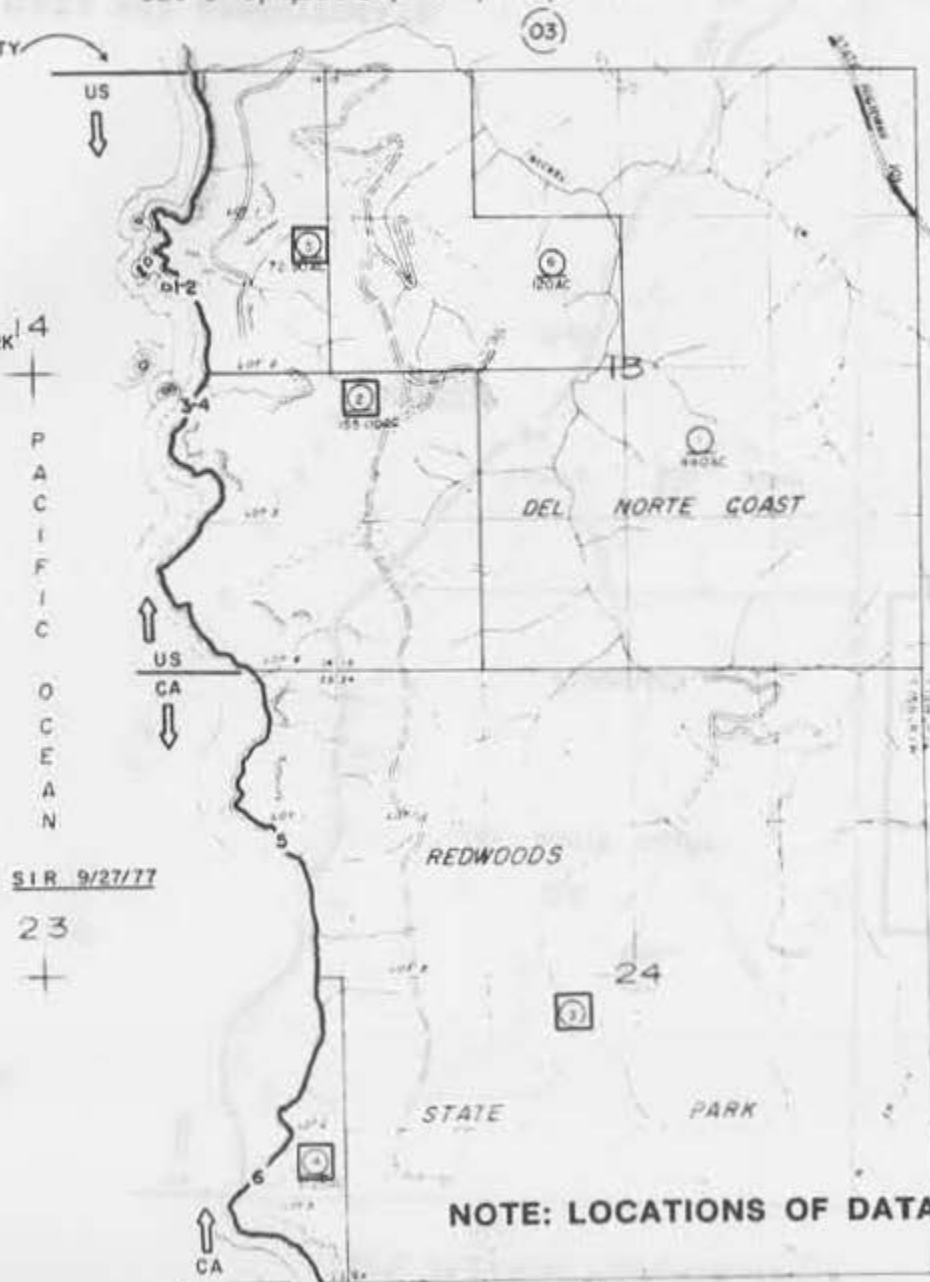
NOTE: LOCATIONS OF DATA ARE APPROXIMATE.

SEC'S 13, 14, 23 & 24, T. 15N, R. 1W, H.B. & M.

126-04

GRANT TO CRESCENT CITY
HARBOR DIST.
G 03-02

MAPS
CMF 1513-REDWOOD NAT. PARK-USNPS
P & R OWN. MAP NO. 5115
DEL NORTE COAST REDWOOD STATE PARK



LEGEND*

- +++++ Grain, jetty, breakwater, etc.
- R-R-R- Shore protection, seawall, riprap, etc.
- ▬ Piers
- Other types of artificial features
- Continuous artificial features
- Inventory study parcel

* SEE FRONT PAGE FOR DETAILED LEGEND

SIR 9/27/77

23

NOTE: LOCATIONS OF DATA ARE APPROXIMATE.

SEC'S 25, 26 & 36, T. 15. N., R. 1 W., H. B. & M.

(04)

MAPS

P & R OWN. MAP NO. 5115
DEL NORTE COAST REDWOOD STATE PARK

26
+



LEGEND*

- ◆◆◆◆ Grain, jetty, breakwater, etc.
- ◆◆◆— Shore protection, seawall, riprap, etc.
- ▬ Piers
- ⊙ Other types of artificial features
- ⊙ Continuous artificial features
- Inventory study parcel

* SEE FRONT PAGE FOR DETAILED LEGEND

(09)

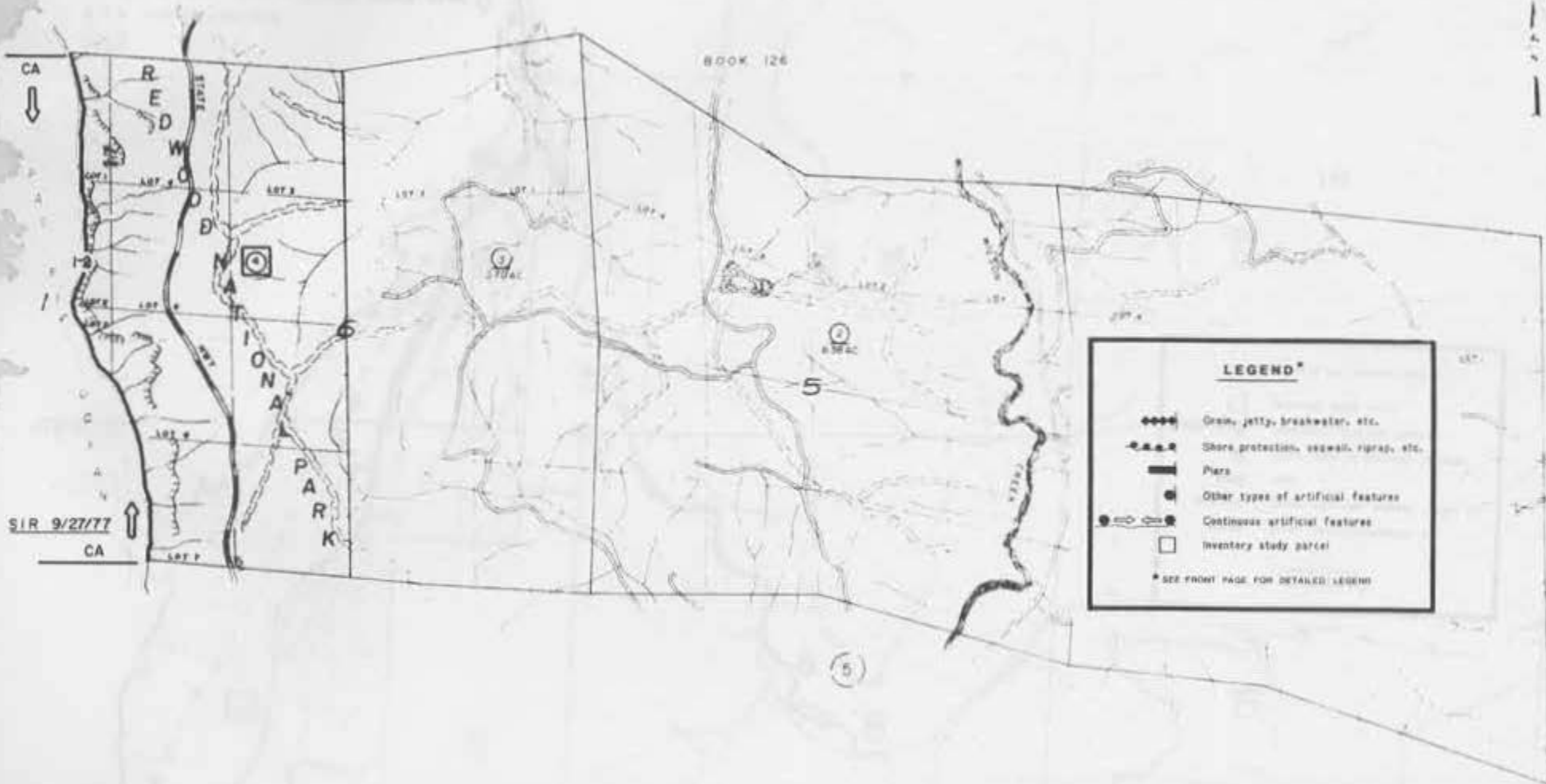
(26)

NOTE: LOCATIONS OF DATA ARE APPROXIMATE.

T.14N.,R.1E.,H.B&M.
B
T.14N.,R.1W.,H.B&M.

127-04

BOOK 126



LEGEND*

- ◆◆◆ Groin, jetty, breakwater, etc.
- Shore protection, seawall, riprap, etc.
- ▬ Pier
- ⊙ Other types of artificial features
- ⊕ Continuous artificial features
- Inventory study parcel

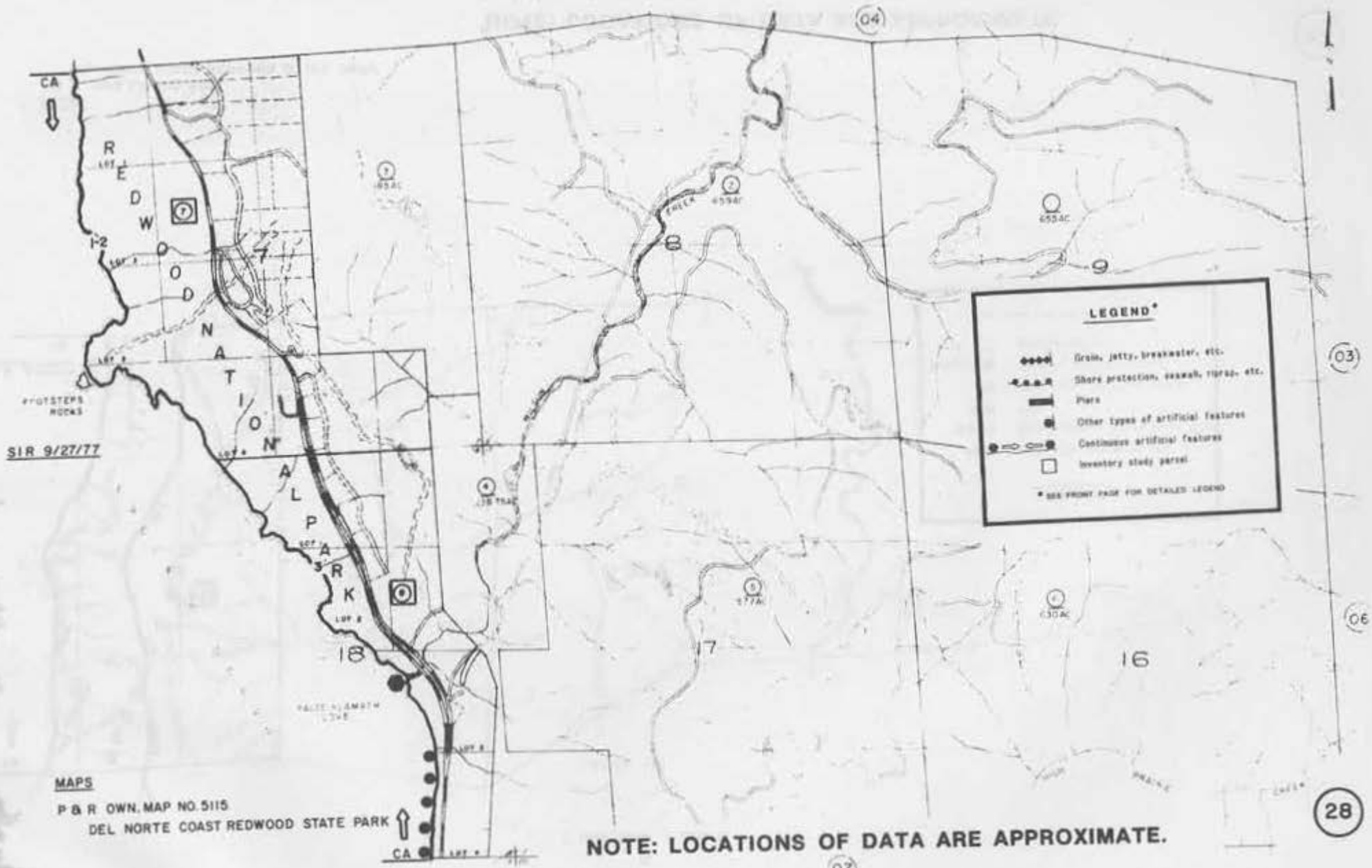
* SEE FRONT PAGE FOR DETAILED LEGEND

SIR 9/27/77

MAPS
P & R OWN. MAP NO. 5115
DEL NORTE COAST REDWOOD STATE PARK

NOTE: LOCATIONS OF DATA ARE APPROXIMATE.

T14N, R1E, HB&M



LEGEND*

- Groin, jetty, breakwater, etc.
- Shore protection, seawall, riprap, etc.
- Piers
- Other types of artificial features
- Continuous artificial features
- Inventory study parcel

* SEE FRONT PAGE FOR DETAILED LEGEND

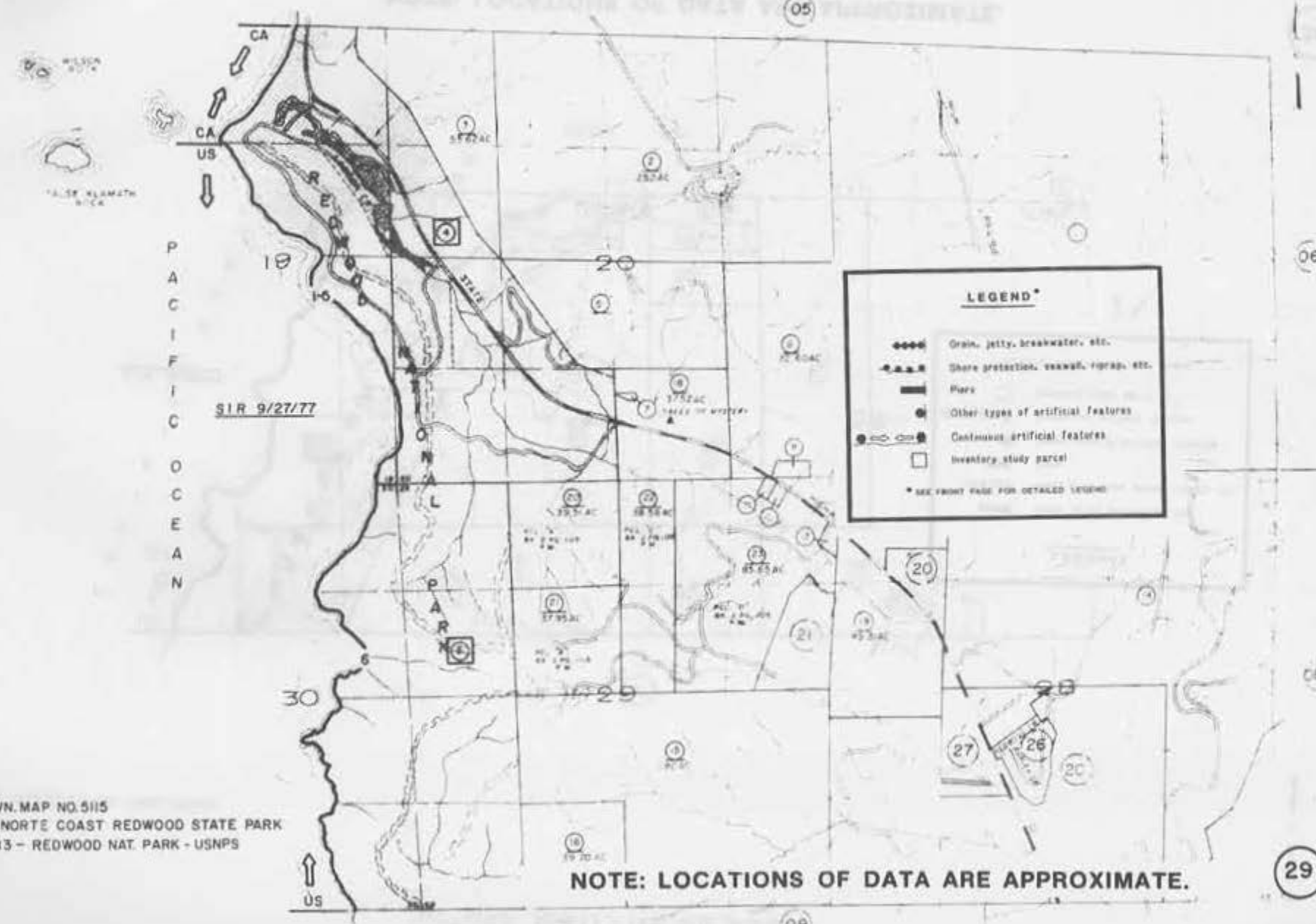
SIR 9/27/77

MAPS

P & R OWN. MAP NO. 5115
DEL NORTE COAST REDWOOD STATE PARK

NOTE: LOCATIONS OF DATA ARE APPROXIMATE.

05



LEGEND*

- ◆◆◆◆ Grain, jetty, breakwater, etc.
- Shore protection, seawall, riprap, etc.
- ▬ Piers
- Other types of artificial features
- Continuous artificial features
- Inventory study parcel

* SEE FRONT PAGE FOR DETAILED LEGEND

P
A
C
I
F
I
C

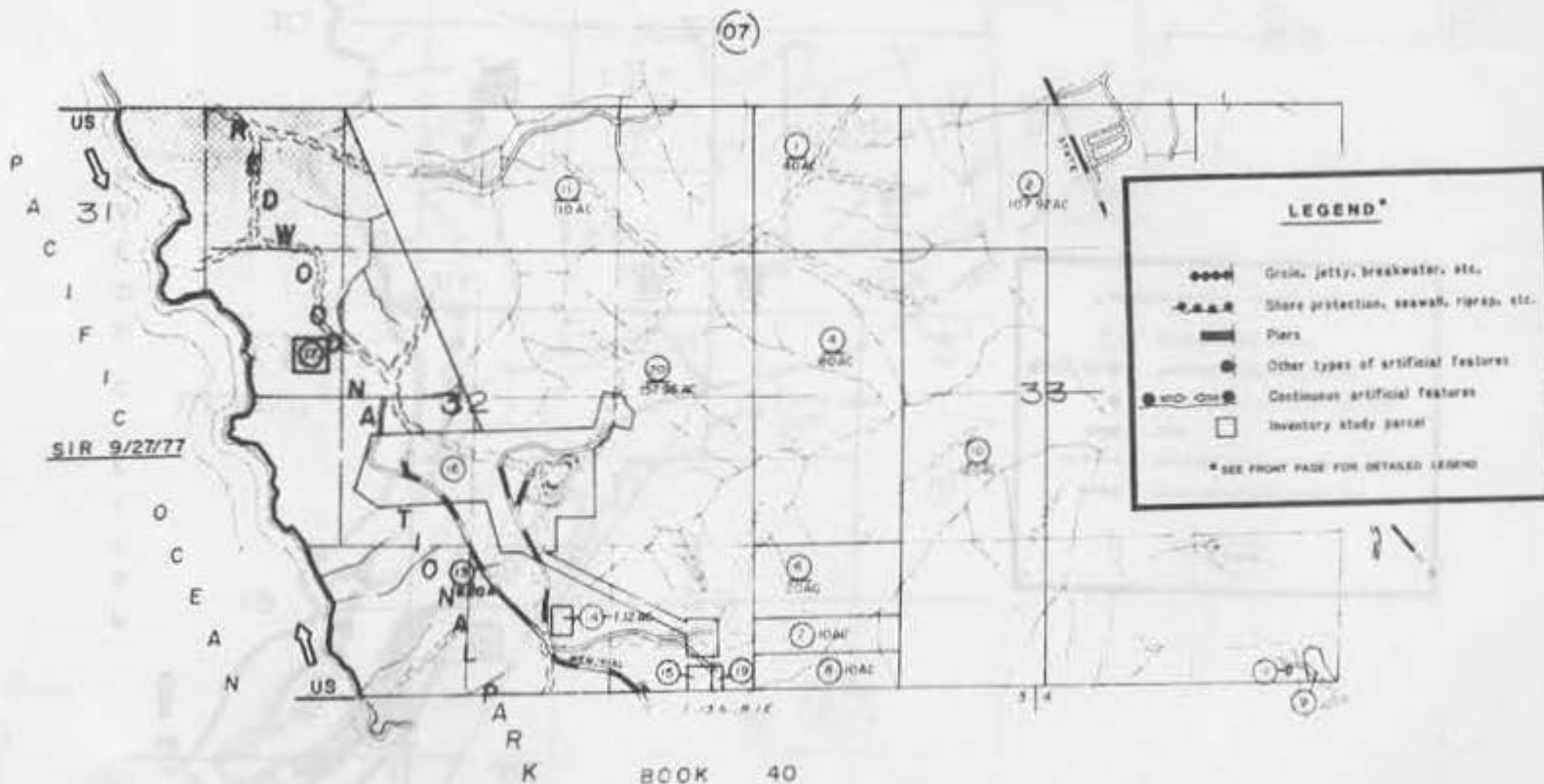
O
C
E
A
N

SIR 9/27/77

MAPS
 P & R OWN. MAP NO. 5115
 DEL NORTE COAST REDWOOD STATE PARK
 CMF 1513 - REDWOOD NAT. PARK - USNPS

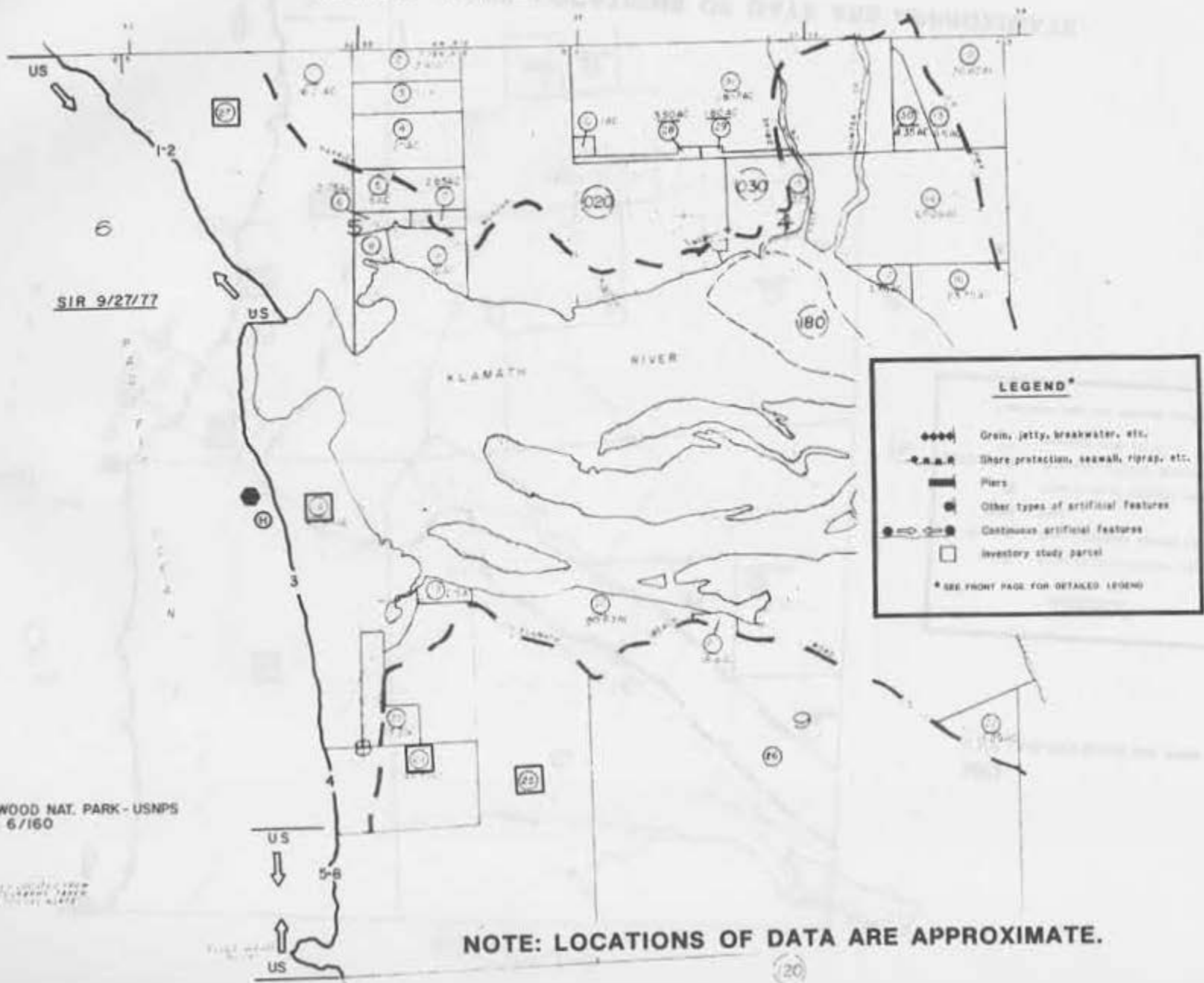
NOTE: LOCATIONS OF DATA ARE APPROXIMATE.

MAPS
CMF 1513 - REDWOOD NAT. PARK - USNPS



NOTE: LOCATIONS OF DATA ARE APPROXIMATE.

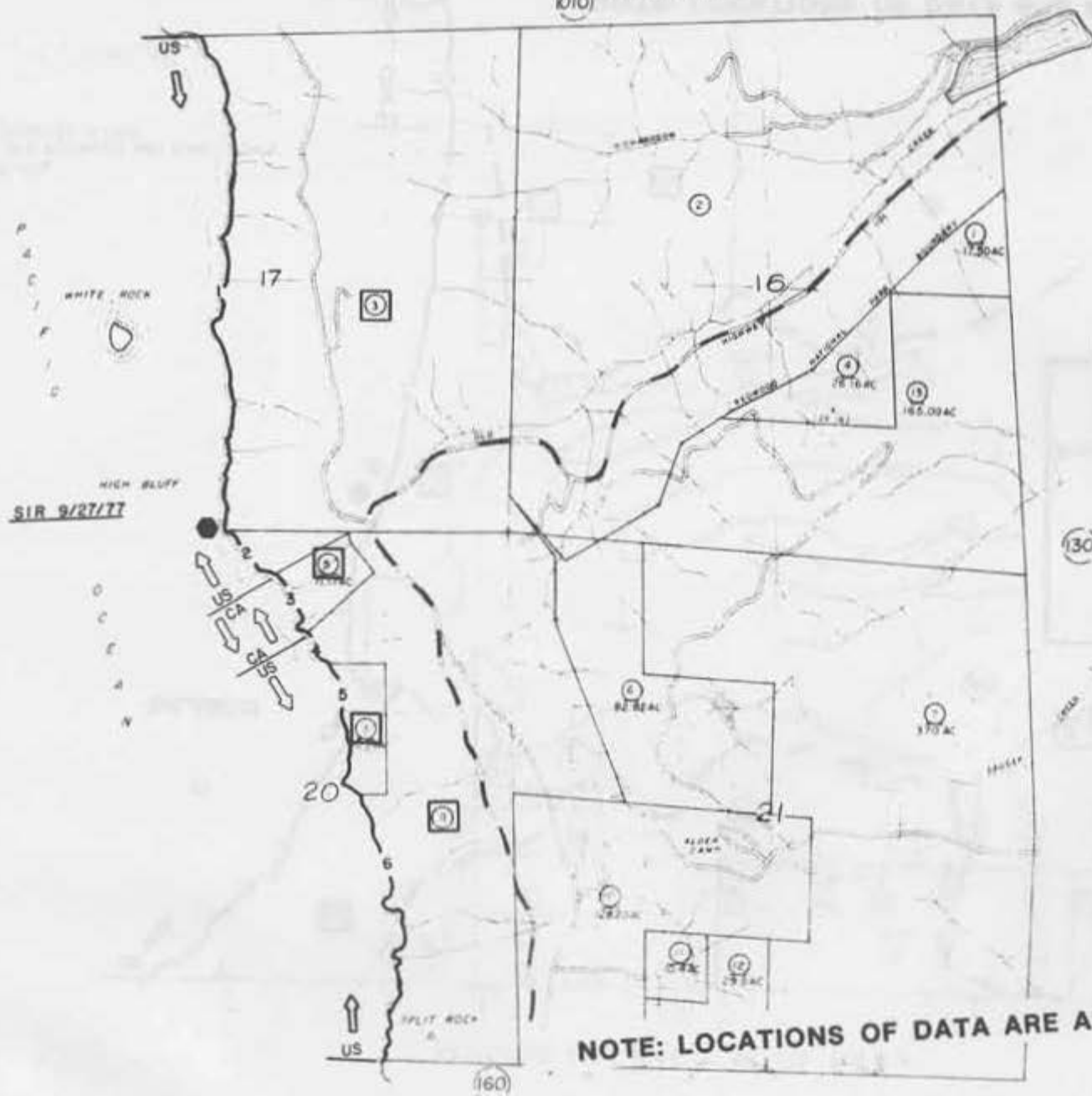
SECTIONS 4,5,6,8&S 1,3N R 1E, H&B M



MAPS
 CB 775-776
 CMF 1513-REDWOOD NAT. PARK-USNPS
 CMF 2092-RS 6/160

NOTE: LOCATIONS OF DATA ARE APPROXIMATE.

(10) T.13N.,R.1E



SIR 9/27/77

MAPS
CMF 1513-REDWOOD NAT. PARK - USNPS

LEGEND*

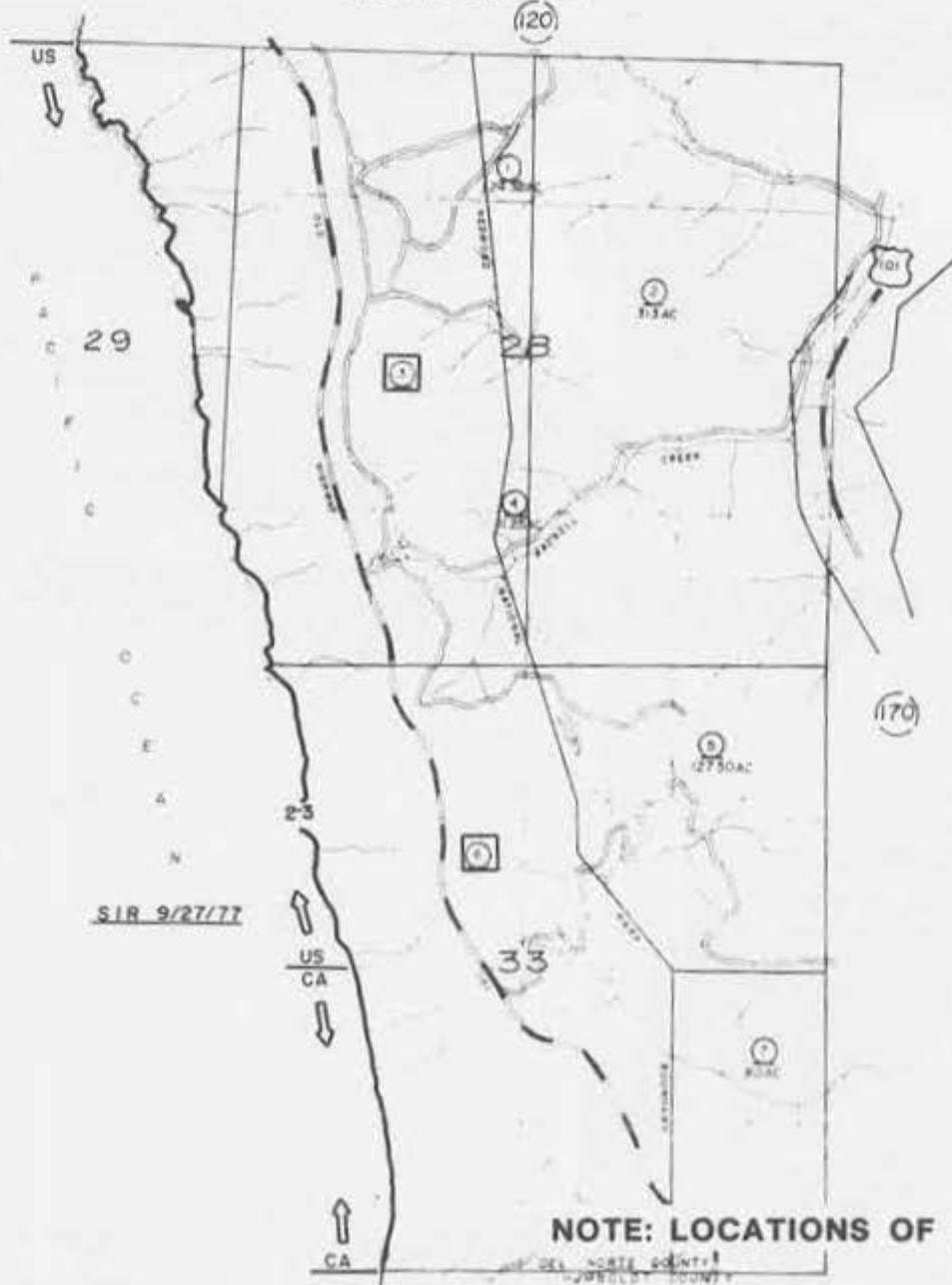
- Gravel, jetty, breakwater, etc.
- - - - - Shore protection, seawall, riprap, etc.
- ==== Piers
- Other types of artificial features
- Continuous artificial features
- Inventory study parcel

* SEE FRONT PAGE FOR DETAILED LEGEND

NOTE: LOCATIONS OF DATA ARE APPROXIMATE.

T.13N, R.1E, H.B. & M

140-160



MAPS

CMF 1513-REDWOOD NAT. PARK-USNPS
 CMF 2091-RS 4/77
 P & R OWN. MAP NO. 6012
 PRAIRIE CREEK REDWOOD SP

LEGEND*

- Dred, jetty, breakwater, etc.
- Shore protection, seawall, riprap, etc.
- Piers
- Other types of artificial features
- Continuous artificial features
- Inventory study parcel

*SEE FRONT PAGE FOR DETAILED LEGEND

SIR 9/27/77

NOTE: LOCATIONS OF DATA ARE APPROXIMATE.

**DATA
SUMMARIES
BY PARCEL**

DATA SUMMARIES BY PARCEL

PAGE/LINE	ASSESSOR'S PARCEL NO	RECORDING NUMBER	DATE RECORDED	IDENTIFICATION	OWNER-SHIP	TITLE SOURCE	SHORE LENGTH (FEET)	DESC TYPE	DESCRIPTION CALL ALONG WATER	M & B AVAIL	SPEC CONS	FEATURE/ACTION	WITHIN PARCEL	STUDY/PRIORITY AUDTEMN O
SEE NOTE 1	SEE NOTE 2 & 4	SEE NOTE 3 & 4	Date vesting document was recorded	Name of public facility or subdivision	SEE NOTE 4	Original source of title	Approximate shoreline length of the parcel	Description type	Descriptive call along the water from the description of the parcel	SEE NOTE 5		Type of artificial feature or action that may be affecting the shoreline of the parcel	Indicates whether or not the physical location of the artificial feature or action is within the parcel limits	SEE NOTE 6

- (1) The SLC "inventory" number that is given to the Summary Maps (page) and to the individual parcels (line), in a north to south direction, and may not have the same limits as County Assessor's Parcels.
- (2) County Assessor's Parcel Numbers which identifies a parcel of land for tax purposes, and generally were used by SLC in acquiring vesting documents.
- (3) Indicates the recording number of the vesting document acquired for this "inventory". If a "see page/line" number appears in this column, it means that the parcel falls within a subdivision, and the referred to vesting document was acquired for the "inventory", since it would be representative of all the parcels within the subdivision.
- (4) From County Public Records as of 1977, State and Federal ownership as of Jan. 1981.

- (5) Identifies if a description or a map exists that has a metes and bounds survey of the shoreline, an evaluation of that shoreline survey is reflected in the "study/priority AUDTEMN O" column.
- (6) This column lists the numerical value assigned to various factors that affect each parcel and, by a systematic comparison, an overall study/survey priority is established. The factors are:
 - 1) A = Shoreline condition: an evaluation based on the discovery of artificial features or actions.
 - 2) U = Identifies type of ownership and development.
 - 3) D = Descriptive call along the water from the description of the parcel.
 - 4) T = Evaluation of possible title problems.
 - 5) E = Possible encroachment onto sovereign lands.
 - 6) M = An evaluation of the metes and bounds description along the shoreline in the acquired maps and documents.

NOTE: THESE COMPUTER PRINT-OUTS ARE SUMMARIES. WHAT IS SHOWN MAY NOT BE THE EXACT WORDING OR CONDITION.

DATA SUMMARIES, BY PARCEL

PAGE/LINE	ASSESSOR'S PARCEL NO.	RECORDING NUMBER	DATE RECORDED	IDENTIFICATION	OWNER-SHIP	TITLE SOURCE	SHORE LENGTH (FEET)	DESC TYPE	DESCRIPTION CALL ALONG WATER	M+B AVAIL.	SPEC. CONS.	FEATURE/ACTION	WITHIN PARCEL	STUDY/PRIORITY AUDITCMN O
1 1	101-050-001	R 69-0252	10-26-60		PRIV	S PAT	615.	M&B	ORDINARY HW					525551X 4
1 2	101-050-002	D 78-0007	05-12-64		PRIV	S PAT	100.	M&B	ORDINARY HW					525551X 4
1 3	101-050-003	R 169-0130	01-12-73		PRIV	S PAT	200.	M&B	ORDINARY HW					525551X 4
1 4	101-050-004	R 167-0073	11-20-72		PKIV	S PAT	100.	M&B	ORDINARY HW					525551X 4
1 5	101-050-005	R 167-0073	11-20-72		PKIV	S PAT	100.	M&B	ORDINARY HW					525551X 4
1 6	101-050-006	D 72-0208	05-28-51		PRIV	S PAT	100.	M&B	ORDINARY HW					525551X 4
1 7	101-050-007	D 63-0294	11-27-45		PRIV	S PAT	100.	M&B	ORDINARY HW					525551X 4
1 8	101-050-008	D 70-0162	01-26-50		PRIV	S PAT	100.	M&B	ORDINARY HW					525551X 4
1 9	101-050-009	D 69-0284	02-13-47		PRIV	S PAT	100.	M&B	ORDINARY HW					525551X 4
2 1	101-070-001	R 165-0522	09-15-72	PELICAN 58	CA	S PAT	940.	M&B	ORDINARY HW					525551X 4
2 2	101-070-002	R 135-0312	07-05-68		PRIV	S PAT	600.	M&B	ORDINARY HW					525551X 4
2 3	101-070-015	R 135-0312	07-05-68		PKIV	S PAT	240.	M&B	ORDINARY HW	DESC		STEPS	YES	525553X 4
2 4	101-070-014	R 160-0608	01-20-72		PKIV	S PAT	500.	M&B	ORDINARY HW					525551X 4
2 5	101-070-004	R 169-0533	09-15-72		PRIV	S PAT	60.	SUBD	ORDINARY HW					525551X 4
2 6	101-070-005	R 112-0045	08-30-65		PRIV	S PAT	20.	M&B	ORDINARY HW					525551X 4
2 7	101-070-006	R 112-0045	08-30-65		PRIV	S PAT	100.	M&B	ORDINARY HW					525551X 4
2 8	101-070-013	R 177-0055	03-01-74		PRIV	S PAT	96.	M&B	ORDINARY HW					525551X 4
3 1	101-020-011	R 176-0670	02-21-74		PRIV	S PAT	145.	M&B	ORDINARY HW					525551X 4
4 1	101-082-001	R 165-0606	09-22-72		PRIV	S PAT	695.	OTH	HIGH WATER					523551X 4
4 2	101-082-002	(SEE 4-1)		SD PELICAN BCH	PRIV	S PAT	175.	SUBD	HIGH TIDE					523551X 4
4 3	101-082-003	(SEE 4-1)		SD PELICAN BCH	PRIV	S PAT	80.	SUBD	HIGH TIDE					523551X 4
4 4	101-082-004	(SEE 4-1)		SD PELICAN BCH	PRIV	S PAT	70.	SUBD	HIGH TIDE					523551X 4
4 5	101-082-005	(SEE 4-1)		SD PELICAN BCH	PRIV	S PAT	100.	SUBD	HIGH TIDE					523551X 4
4 6	101-082-006	(SEE 4-1)		SD PELICAN BCH	PKIV	S PAT	90.	SUBD	HIGH TIDE					523551X 4
4 7	101-082-007	(SEE 4-1)		SD PELICAN BCH	PKIV	S PAT	80.	SUBD	HIGH TIDE					523551X 4
4 8	101-082-008	(SEE 4-1)		SD PELICAN BCH	PRIV	S PAT	75.	SUBD	HIGH TIDE					523551X 4
4 9	101-082-009	(SEE 4-1)		SD PELICAN BCH	PRIV	S PAT	70.	SUBD	HIGH TIDE					523551X 4
4 10	101-082-010	(SEE 4-1)		SD PELICAN BCH	PRIV	S PAT	90.	SUBD	HIGH TIDE					523551X 4
4 11	101-082-011	(SEE 4-1)		SU PELICAN BCH	PRIV	S PAT	30.	SUBD	HIGH TIDE					523551X 4
4 12	101-082-012	(SEE 4-1)		SU PELICAN BCH	PRIV	S PAT	95.	SUBD	HIGH TIDE					523551X 4
4 13	101-082-013	(SEE 4-1)		SD PELICAN BCH	PRIV	S PAT	75.	SUBD	HIGH TIDE					523551X 4
4 14	101-082-014	(SEE 4-1)		SD PELICAN BCH	PRIV	S PAT	60.	SUBD	HIGH TIDE					523551X 4
4 15	101-082-015	(SEE 4-1)		SD PELICAN BCH	PRIV	S PAT	65.	SUBD	HIGH TIDE					523551X 4
5 1	101-020-034	R 176-0670	02-21-74		PRIV	S PAT	55.	SUBD	HIGH TIDE					523551X 4
5 2	101-020-047	D 71-0167	09-14-50		PRIV	S PAT	550.	OTH	HIGH WATER					523551X 4
5 3	101-020-047	D 62-0208	03-05-45		PRIV	S PAT	490.	M&B	ORDINARY HW					525551X 4
6 1	101-090-001	R 159-0027	10-15-71		PRIV	S PAT	1200.	M&B	ORDINARY HW					525551X 4
6 2	101-090-002	R 178-0437	05-18-74		PRIV	S PAT	100.	M&B	ORDINARY HW					525551X 4
6 3	101-090-003	R 59-0055	08-19-59		PRIV	S PAT	100.	M&B	OCEAN					523451X 4
6 4	101-090-004	R 69-0330	11-01-60		PRIV	S PAT	100.	M&B	ORDINARY HW					525551X 4
6 5	101-090-006	R 122-0284	08-24-66		PKIV	S PAT	100.	M&B	ORDINARY HW					525551X 4
6 6	101-090-021	R 122-0271	08-24-66		PKIV	S PAT	50.	M&B	ORDINARY HT					524551X 4
6 7	101-090-022	R 76-0638	07-31-61		PKIV	S PAT	60.	M&B	ORDINARY HT					524551X 4
6 8	101-090-010	R 81-0019	05-02-62		PRIV	S PAT	90.	M&B	ORDINARY HW					525551X 4
6 9	101-090-011	R 181-0376	09-23-74		PRIV	S PAT	75.	M&B	ORDINARY HW					524551X 4
6 10	101-090-013	R 144-0292	09-08-69		PRIV	S PAT	75.	M&B	ORDINARY HW					524551X 4
6 11	101-090-015	R 67-0352	08-08-60		PRIV	S PAT	95.	M&B	MEAN HIGH TIDE					524551X 4
6 12	101-090-016	R 85-0525	10-26-62		PRIV	S PAT	70.	M&B	MEAN HIGH TIDE					524551X 4
6 13	101-090-024	R 168-0113	01-12-73		PRIV	S PAT	70.	M&B	MEAN HIGH TIDE					524551X 4
6 14	101-090-018	R 129-0308	05-24-67		PRIV	S PAT	90.	M&B	MEAN HIGH TIDE					524551X 4
6 15	101-090-019	R 173-0544	09-12-73		PRIV	S PAT	90.	M&B	MEAN HIGH TIDE					524551X 4
6 16	101-090-020	R 28-0129	10-27-56	KANPH PK	CO	S PAT	100.	M&B	MEAN HIGH TIDE					524551X 4
7 1	101-020-025	R 133-0120	04-05-68		PRIV	S PAT	200.	M&B	ORDINARY HW					525551X 4
7 2	101-020-032	R 120-0247	06-10-66		PRIV	S PAT	2650.	SEC	SECTIONAL					525551X 4
							1250.	M&B	ORDINARY HW					525551X 4

NOTE: THESE COMPUTER PRINT-OUTS ARE SUMMARIES, WHAT IS SHOWN MAY NOT BE THE EXACT WORDING OR CONDITION.

NOTE: THESE COMPUTER PRINT-OUTS ARE SUMMARIES, WHAT IS SHOWN MAY NOT BE THE EXACT WORDING OR CONDITION.

PAGE/LINE	ASSESSOR'S PARCEL NO.	RECORDING NUMBER	DATE RECORDED	IDENTIFICATION	OWNER-SHIP	TITLE SOURCE	SHORE LENGTH (FEET)	DESC TYPE	DESCRIPTION CALL ALONG WATER	M+B AVAIL. CONS.	SPEC. CONS.	FEATURE/ ACTION	WITHIN PARCEL	STUDY/ PRIORITY AUGTEMP G
8 1	101-110-012	R 162-0477	03-16-72		PRIV	S PAT	90.	SUBD	ORDINARY HW					525551X 4
8 2	101-110-013	R 158-0224	09-10-71		PRIV	S PAT	110.	M&B	ORDINARY HW					525551X 4
9 1	101-020-030	R 120-0227	06-10-66		PRIV	S PAT	940.	M&B	ORDINARY HW					525551X 4
10 1	102-041-002	(SEE 12-9)		SD SMITH HIV RH	PRIV	S PAT	270.	SUBD	ORDINARY HW					525551X 4
10 2	102-041-003	(SEE 12-9)		SD SMITH HIV RH	PRIV	S PAT	260.	SUBD	ORDINARY HW					525551X 4
10 3	102-041-006	(SEE 12-9)		SD SMITH HIV RH	PRIV	S PAT	40.	SUBC	ORDINARY HW					525551X 4
10 4	102-041-009	(SEE 12-9)		SD SMITH HIV RH	PRIV	S PAT	460.	SUBD	ORDINARY HW					525551X 4
10 5	102-041-016	(SEE 12-9)		SD SMITH HIV RH	PRIV	S PAT	630.	SUBC	ORDINARY HW					525551X 4
11 1	102-140-002	(SEE 12-9)		SD SMITH HIV RH	PRIV	S PAT	370.	SUBD	ORDINARY HW					525551X 4
11 2	102-140-006	(SEE 12-9)		SD SMITH HIV RH	PRIV	S PAT	540.	SUBD	ORDINARY HW					525551X 4
11 3	102-140-012	(SEE 12-9)		SD SMITH HIV RH	PRIV	S PAT	380.	SUBD	ORDINARY HW					525551X 4
11 4	102-140-020	(SEE 12-9)		SD SMITH HIV RH	PRIV	S PAT	250.	SUBD	ORDINARY HW					525551X 4
11 5	102-140-021	(SEE 12-9)		SD SMITH HIV RH	PRIV	S PAT	90.	SUBD	ORDINARY HW					525551X 4
11 6	102-140-023	(SEE 12-9)		SD SMITH HIV RH	PRIV	S PAT	85.	SUBD	ORDINARY HW					525551X 4
11 7	102-140-024	(SEE 12-9)		SD SMITH HIV RH	PRIV	S PAT	110.	SUBD	ORDINARY HW					525551X 4
12 1	102-050-020	(SEE 12-9)		SD SMITH HIV RH	PRIV	S PAT	100.	SUBD	ORDINARY HW					525551X 4
12 2	102-050-021	(SEE 12-9)		SD SMITH HIV RH	PRIV	S PAT	140.	SUBD	ORDINARY HW					525551X 4
12 3	102-050-022	(SEE 12-9)		SD SMITH HIV RH	PRIV	S PAT	115.	SUBD	ORDINARY HW			JUNK WRECK	YES	525551X 4
12 4	102-050-016	(SEE 12-9)		SD SMITH HIV RH	PRIV	S PAT	215.	SUBD	ORDINARY HW					525551X 4
12 5	102-050-017	(SEE 12-9)		SD SMITH HIV RH	PRIV	S PAT	185.	SUBD	ORDINARY HW					525551X 4
12 6	102-050-006	(SEE 12-9)		SD SMITH HIV RH	PRIV	S PAT	165.	SUBD	ORDINARY HW					525551X 4
12 7	102-050-008	(SEE 12-9)		SD SMITH HIV RH	PRIV	S PAT	180.	SUBD	ORDINARY HW					525551X 4
12 8	102-050-014	(SEE 12-9)		SD SMITH HIV RH	PRIV	S PAT	260.	SUBD	ORDINARY HW					525551X 4
12 9	102-050-015	R 114-0580	01-11-66	SD SMITH HIV RH	PRIV	S PAT	745.	SUBD	ORDINARY HW					525551X 4
12 10	102-050-011	(SEE 12-9)		SD SMITH HIV RH	PRIV	S PAT	500.	SUBD	ORDINARY HW					525551X 4
12 11	102-050-010	(SEE 12-9)		SD SMITH HIV RH	PRIV	S PAT	100.	SUBD	ORDINARY HW					525551X 4
13 1	102-010-012	R 103-0034	03-26-68	SD SMITH HIV RH	PRIV	S PAT	390.	SUBD	ISLAND					525551X 4
13 2	102-010-009	R 100-0177	06-30-64		PRIV	S&O	7000.	M&B	HIGH WATER					525551X 3
14 1	103-010-011	R 236-0263	09-19-79		CA	S&O	5390.	M&B	OCEAN					525551X 3
14 2	103-010-008	R 123-0489	10-25-66		CO	S PAT	9490.	SEC	SECTIONAL					525551X 4
15 1	105-010-001	R 123-0489	10-25-66		CO	S PAT	1050.	SEC	SECTIONAL					525551X 4
15 2	105-010-002	R 236-0263	09-19-79		CA	S PAT	4000.	SEC	SECTIONAL					525551X 4
15 3	105-010-009	R 236-0263	09-19-79		CA	S PAT	5400.	SEC	SECTIONAL					525551X 4
16 1	105-030-001	R 236-0263	09-19-79		CA	S PAT	1250.	SEC	SECTIONAL					525551X 4
16 2	105-030-047	R 129-0612	09-15-67		CO	S PAT	295.	M&B	GLO BEANER LINE					525551X 4
16 3	105-030-001	R 236-0263	09-19-79		CA	S PAT	2950.	SEC	SECTIONAL					525551X 4
16 4	105-030-042	R 157-0131	07-09-71		PRIV	S PAT	780.	SEC	SECTIONAL					525551X 4
16 5	105-030-044	R 157-0131	07-09-71		PRIV	S PAT	2050.	SEC	SECTIONAL					525551X 4
16 6	105-030-045	R 157-0131	07-09-71		PRIV	S PAT	2000.	SEC	SECTIONAL					525551X 4
16 7	105-030-080	R 181-0184	09-10-74		PRIV	S PAT	1350.	SEC	SECTIONAL					525551X 4
17 1	106-010-000	R 181-0184	09-10-74		PRIV	S&O	4050.	M&B	GLO BEANER LINE					522251X 3
17 2	106-010-005	R 140-0134	03-27-69		PRIV	S&O	4050.	M&B	GLO BEANER LINE					522251X 3
17 3	106-010-010	R 140-0134	03-27-69		PRIV	S PAT	2950.	SEC	SECTIONAL					525551X 4
18 1	110-020-001	R 236-0263	09-19-79		CA	S PAT	100.	SEC	SECTIONAL					525551X 4
19 1	110-010-014	R 236-0263	09-19-79		CA	S PAT	4500.	SEC	SECTIONAL					525551X 4
19 2	110-010-014	N.PAT			US	N PAT	1450.	SEC	SECTIONAL					525551X 4
19 3	110-010-014	R 236-0263	09-19-79		CA	S PAT	1450.	SEC	SECTIONAL					525551X 4
19 4	110-010-013	R 236-0263	09-19-79		CA	S PAT	50.	M&B	ORDINARY HW					525551X 4
19 5	110-010-002	R 191-0523	02-03-76		CO	S PAT	1700.	SEC	SECTIONAL					525551X 4
19 6	110-010-016	R 144-0663	10-01-69		PRIV	S PAT	1400.	SEC	SECTIONAL					525551X 4
19 7	110-010-009	P.ORD		FT ST GEORGE	US	P ORD	4910.	SEC	SECTIONAL			EXCAVATION	YES	145551X 3
19 8	110-010-016	R 144-0663	10-01-69		PRIV	S PAT	8000.	SEC	SECTIONAL			EXCAVATION	YES	135551X 2
20 1	120-020-001	R 144-0663	10-01-69		PRIV	S PAT	4900.	M&B	OCEAN			EXCAVATION	YES	133431X 2
20 2	120-020-021	R 144-0170	12-19-69		PRIV	S PAT	4100.	SEC	SECTIONAL					525551X 4

NOTE: THESE COMPUTER PRINT-OUTS ARE SUMMARIES, WHAT IS SHOWN MAY NOT BE THE EXACT WORDING OR CONDITION.

PAGE/LINE	ASSESSOR'S PARCEL NO.	RECORDING NUMBER	DATE RECORDED	IDENTIFICATION	OWNER-SHIP	TITLE SOURCE	SHORE LENGTH (FEET)	DESC TYPE	DESCRIPTION CALL ALONG WATER	M&B AVAIL.	SPEC. CONS.	FEATURE/ACTION	WITHIN PARCEL	STUDY/PRIORITY AUDITERN G
20 3	120-020-003	R 63-0340	03-02-60		PRIV	S PAT	100.	M&B	ORDINARY HW					5355515 4
20 4	120-020-022	R 146-0170	12-19-69		PRIV	S PAT	3400.	SEC	SECTIONAL					5355515 4
20 5	120-020-014	D 77-0285	11-10-53		PRIV	S PAT	3800.	SEC	ISLAND					5355515 4
20 6	120-020-015	R 146-0170	12-19-69		CO	S PAT	2050.	SEC	SECTIONAL					1254515 1
21 1	120-040-016	R 195-0446	07-06-76	TAX DEED	CA	S PAT	95.	M&B	ORDINARY HW			SHORE PROT	YES	3555515 4
21 2	120-040-017	R 85-0157	09-28-62		PRIV	S PAT	10.	M&B	ORDINARY HT					5145515 4
21 3	120-040-020	R 145-0532	11-20-69		PRIV	S PAT	60.	M&B	ORDINARY HT					5145515 4
21 4	120-040-032	R 174-0509	10-24-73		PRIV	S PAT	115.	M&B	MEAN HIGH TIDE			SHORE PROT	YES	2145515 1
22 1	120-020-016	D 31-0210	10-08-15	BEACH ACCESS	CO	S PAT	600.	SEC	SECTIONAL			SHORE PROT	YES	2294515 1
22 2	120-020-017	R 84-0149	08-09-62	PBBL BCH FSH & C	CA	S PAT	1700.	OTH	HIGH WATER			STEPS	YES	454551X 4
23 1	120-290-001	R 156-0515	06-23-71		PRIV	S PAT	75.	M&B	MEAN HIGH TIDE			SHORE PROT	YES	114551X 1
23 2	120-290-002	R 174-0254	09-25-73		PRIV	S PAT	490.	OTH	ORDINARY HT					514551X 4
23 3	120-290-003	R 85-0285	10-09-62		PRIV	S PAT	255.	OTH	ORDINARY HT					514551X 4
23 4	120-290-004	R 95-0346	12-26-63	BEACH ACCESS	CO	S PAT	960.	M&B	HIGH WATER			SHORE PROT	YES	124551X 1
23 5	120-290-005	R 168-0227	01-19-73		PRIV	S PAT	165.	M&B	ORDINARY HW					515551X 4
23 6	120-290-006	R 135-0090	06-19-68		PRIV	S PAT	195.	M&B	ORDINARY HW					515551X 4
24 1	120-020-018	R 70-0167	12-01-60	PRESTON ISLD PK	CO	S PAT	1900.	OTH	HIGH TIDE		PRC	EXCAVATION	YES	1234415 1
25 1	126-040-005	R 141-0591	06-11-69	REDWOOD NAT PK	US	S PAT	1400.	SEC	SECTIONAL					545551X 4
25 2	126-040-005	R 142-0480	07-22-69	REDWOOD NAT PK	US	S PAT	1940.	SEC	SECTIONAL					545551X 4
25 3	126-040-002	R 141-0697	06-17-69	REDWOOD NAT PK	US	S PAT	2850.	SEC	SECTIONAL					545551X 4
25 4	126-040-002	R 155-0473	12-30-70	REDWOOD NAT PK	US	S PAT	750.	SEC	SECTIONAL					545551X 4
25 5	126-040-003	D 50-0381	01-09-32	DN COAST RWD SP	CA	S PAT	3250.	SEC	SECTIONAL					555551X 4
25 6	126-040-004	D 50-0381	01-09-32	DN COAST RWD SP	CA	S PAT	3625.	SEC	SECTIONAL					555551X 4
26 1	126-050-001	D 50-0381	01-09-32	DN COAST RWD SP	CA	S PAT	1990.	SEC	SECTIONAL					555551X 4
26 2	126-050-001	D 45-0392	07-29-29	DN COAST RWD SP	CA	S PAT	1010.	SEC	SECTIONAL					555551X 4
26 3	126-050-001	D 50-0381	01-09-32	DN COAST RWD SP	CA	S PAT	3000.	SEC	SECTIONAL					555551X 4
26 4	126-050-002	D 40-0168	04-27-26	DN COAST RWD SP	CA	S PAT	2555.	SEC	SECTIONAL					555551X 4
26 5	126-050-002	D 40-0073	10-26-25	DN COAST RWD SP	CA	S PAT	1050.	SEC	SECTIONAL					555551X 4
26 6	126-050-002	D 40-0168	04-27-26	DN COAST RWD SP	CA	S PAT	3300.	SEC	SECTIONAL					555551X 4
27 1	127-040-004	D 52-0393	12-07-33	DN COAST RWD SP	CA	S PAT	3850.	SEC	SECTIONAL					555551X 4
27 2	127-040-004	D 45-0392	07-29-29	DN COAST RWD SP	CA	S PAT	2100.	SEC	SECTIONAL					555551X 4
28 1	127-050-007	D 45-0392	07-29-29	DN COAST RWD SP	CA	S PAT	2850.	SEC	SECTIONAL					555551X 4
28 2	127-050-007	D 53-0176	08-17-34	DN COAST RWD SP	CA	S PAT	4100.	M&B	OCEAN					555551X 4
28 3	127-050-008	D 53-0176	08-17-34	DN COAST RWD SP	CA	S PAT	6700.	M&B	OCEAN			SHORE PROT	YES	153551X 4
29 1	127-070-004	D 53-0176	08-17-34	DN COAST RWD SP	CA	S PAT	1550.	M&B	OCEAN					555551X 4
29 2	127-070-004	R 107-0573	03-12-65	REDWOOD NAT PK	US	S PAT	2100.	SEC	SECTIONAL					545451X 4
29 3	127-070-004	R 141-0370	05-28-69	REDWOOD NAT PK	US	S PAT	500.	M&B	MEAN HIGH TIDE					545551X 4
29 4	127-070-004	R 142-0342	07-05-69	REDWOOD NAT PK	US	S PAT	1300.	SEC	SECTIONAL					545551X 4
29 5	127-070-004	R 145-0346	11-05-69	REDWOOD NAT PK	US	S PAT	1500.	SEC	SECTIONAL					545551X 4
29 6	127-070-009	R 141-0242	05-20-69	REDWOOD NAT PK	US	S PAT	6450.	SEC	SECTIONAL					545501X 4
30 1	127-090-017	R 141-0242	05-20-69	REDWOOD NAT PK	US	S PAT	6900.	SEC	SECTIONAL					545501X 4
31 1	140-010-027	R 141-0242	05-20-69	REDWOOD NAT PK	US	S PAT	2400.	SEC	SECTIONAL					545551X 4
31 2	140-010-027	R 141-0325	05-27-69	REDWOOD NAT PK	US	S PAT	700.	M&B	M&B ONLY					5424515 4
31 3	140-010-018	R 179-0700	07-09-74		PRIV	S PAT	5050.	M&B	ORDINARY HW	M&B	LIT	POS HIST	YES	525551X 4
31 4	140-010-024	R 109-0361	05-24-65		PRIV	S PAT	1040.	SEC	SECTIONAL		LIT			935551X 4
31 5	140-010-025	R 159-0306	11-16-71	REDWOOD NAT PK	US	S PAT	60.	M&B	ORDINARY HW					545551X 4
31 6	140-010-025	R 164-0456	07-25-72	REDWOOD NAT PK	US	S PAT	380.	M&B	ORDINARY HW					545551X 4
31 7	140-010-025	R 164-0456	07-25-72	REDWOOD NAT PK	US	S PAT	210.	M&B	ORDINARY HW					545551X 4
31 8	140-010-025	R 136-0572	09-17-68	REDWOOD NAT PK	US	S PAT	1600.	SEC	SECTIONAL					5454515 4
32 1	140-120-005	R 136-0572	09-17-68	REDWOOD NAT PK	US	S PAT	5500.	SEC	SECTIONAL			EXCAVATION	YES	3454515 4
32 2	140-120-009	R 136-0572	09-17-68	REDWOOD NAT PK	US	S PAT	700.	SEC	SECTIONAL			EXCAVATION	YES	3454515 4
32 3	140-120-005	D 53-0322	01-09-35	REDWOOD NAT PK	CA	S PAT	700.	M&B	SHORE			EXCAVATION	YES	3535515 4
32 4	140-120-009	R 136-0572	09-17-68	REDWOOD NAT PK	US	S PAT	450.	SEC	SECTIONAL					5454515 4
32 5	140-120-008	N-PAT		REDWOOD NAT PK	US	N PAT	1490.	SEC	SECTIONAL					5455515 4

NOTE: THESE COMPUTER PRINT-OUTS ARE SUMMARIES, WHAT IS SHOWN MAY NOT BE THE EXACT WORDING OR CONDITION.

NOTE: THESE COMPUTER PRINT-OUTS ARE SUMMARIES, WHAT IS SHOWN MAY NOT BE THE EXACT WORDING OR CONDITION.

PAGE/LINE	ASSESSOR'S PARCEL NO.	RECORDING NUMBER	DATE RECORDED	IDENTIFICATION	OWNER-SHIP	TITLE SOURCE	SHORE LENGTH (FEET)	DESC TYPE	DESCRIPTION CALL ALONG WATER	#+6 AVAIL.	SPEC. CONS.	FEATURE/ ACTION	WITHIN PARCEL	STUDY/ PRIORITY QUOTERN O
32 6	140-120-009	R 136-0572	09-17-68	REDWOOD NAT PK	US	S PAT	4100.	SEC	SECTIONAL					5454515 4
33 1	140-160-003	R 136-0572	09-17-68	REDWOOD NAT PK	US	S PAT	6390.	SEC	SECTIONAL					5454515 4
33 2	140-160-006	R 57-0280	06-23-59	REDWOOD NAT PK	US	S PAT	2990.	SEC	SECTIONAL					5454515 4
33 3	140-160-006	O 76-0415	09-14-53	PRAIRIE CRK RED	CA	S PAT	2900.	SEC	SECTIONAL					555551X 4

NOTE: THESE COMPUTER PRINT-OUTS ARE SUMMARIES, WHAT IS SHOWN MAY NOT BE THE EXACT WORDING OR CONDITION.

APN - PAGE/LINE

ASSESSOR'S PARCEL NO.	PAGE/LINE	ASSESSOR'S PARCEL NO.	PAGE/LINE	ASSESSOR'S PARCEL NO.	PAGE/LINE
101-020-011	3 1	101-090-024	6 13	120-020-014	20 5
101-020-025	7 1	101-110-012	8 1	120-020-015	20 6
101-020-030	9 1	101-110-013	8 2	120-020-016	22 1
101-020-032	7 2	102-010-009	13 2	120-020-017	22 2
101-020-034	5 1	102-010-012	13 1	120-020-018	24 1
101-020-047	5 2	102-041-002	10 1	120-020-021	20 2
101-020-047	5 3	102-041-003	10 2	120-020-022	20 4
101-050-001	1 1	102-041-008	10 3	120-040-016	21 1
101-050-002	1 2	102-041-009	10 4	120-040-017	21 2
101-050-003	1 3	102-041-018	10 5	120-040-020	21 3
101-050-004	1 4	102-050-006	12 6	120-040-032	21 4
101-050-005	1 5	102-050-008	12 7	120-290-001	23 1
101-050-006	1 6	102-050-010	12 11	120-290-002	23 2
101-050-007	1 7	102-050-011	12 10	120-290-003	23 3
101-050-008	1 8	102-050-014	12 8	120-290-004	23 4
101-050-009	1 9	102-050-015	12 9	120-290-005	23 5
101-070-001	2 1	102-050-016	12 4	120-290-006	23 6
101-070-002	2 2	102-050-017	12 5	126-040-002	25 3
101-070-004	2 5	102-050-020	12 1	126-040-002	25 4
101-070-005	2 6	102-050-021	12 2	126-040-003	25 5
101-070-006	2 7	102-050-022	12 3	126-040-004	25 6
101-070-013	2 8	102-140-002	11 1	126-040-005	25 1
101-070-014	2 4	102-140-006	11 2	126-040-005	25 2
101-070-015	2 3	102-140-012	11 3	126-050-001	26 1
101-082-001	4 1	102-140-020	11 4	126-050-001	26 2
101-082-002	4 2	102-140-021	11 5	126-050-001	26 3
101-082-003	4 3	102-140-023	11 6	126-050-002	26 4
101-082-004	4 4	102-140-024	11 7	126-050-002	26 5
101-082-005	4 5	103-010-008	14 2	126-050-002	26 6
101-082-006	4 6	103-010-011	14 1	127-040-004	27 1
101-082-007	4 7	105-010-001	15 1	127-040-004	27 2
101-082-008	4 8	105-010-002	15 2	127-050-007	28 1
101-082-009	4 9	105-010-009	15 3	127-050-007	28 2
101-082-010	4 10	105-030-000	16 7	127-050-008	28 3
101-082-011	4 11	105-030-001	16 1	127-070-004	29 1
101-082-012	4 12	105-030-001	16 3	127-070-004	29 2
101-082-013	4 13	105-030-042	16 4	127-070-004	29 3
101-082-014	4 14	105-030-044	16 5	127-070-004	29 4
101-082-015	4 15	105-030-045	16 6	127-070-004	29 5
101-090-001	6 1	105-030-047	16 2	127-070-009	29 6
101-090-002	6 2	106-010-000	17 1	127-090-017	30 1
101-090-003	6 3	106-010-005	17 2	140-010-018	31 3
101-090-004	6 4	106-010-010	17 3	140-010-024	31 4
101-090-006	6 5	110-010-002	19 5	140-010-025	31 5
101-090-010	6 8	110-010-009	19 7	140-010-025	31 6
101-090-011	6 9	110-010-013	19 4	140-010-025	31 7
101-090-013	6 10	110-010-014	19 1	140-010-025	31 8
101-090-015	6 11	110-010-014	19 2	140-010-027	31 1
101-090-016	6 12	110-010-014	19 3	140-010-027	31 2
101-090-018	6 14	110-010-016	19 6	140-120-003	32 1
101-090-019	6 15	110-010-016	19 8	140-120-005	32 3
101-090-020	6 16	110-020-001	18 1	140-120-008	32 5
101-090-021	6 6	120-020-001	20 1	140-120-009	32 2
101-090-022	6 7	120-020-003	20 3	140-120-009	32 4

APN - PAGE/LINE

ASSESSOR'S PARCEL NO.	PAGE/LINE	ASSESSOR'S PARCEL NO.	PAGE/LINE	ASSESSOR'S PARCEL NO.	PAGE/LINE
140-120-009	32 6	170-050-101	2 8		
140-160-003	33 1	180-050-101	3 7		
140-160-006	33 2	190-050-101	4 6		
140-160-006	33 3	200-050-101	5 5		
150-050-101	6 4	210-050-101	6 4		
160-050-101	7 3	220-050-101	7 3		
170-050-101	8 2	230-050-101	8 2		
180-050-101	9 1	240-050-101	9 1		
190-050-101	10 0	250-050-101	10 0		
200-050-101	11 9	260-050-101	11 9		
210-050-101	12 8	270-050-101	12 8		
220-050-101	13 7	280-050-101	13 7		
230-050-101	14 6	290-050-101	14 6		
240-050-101	15 5	300-050-101	15 5		
250-050-101	16 4	310-050-101	16 4		
260-050-101	17 3	320-050-101	17 3		
270-050-101	18 2	330-050-101	18 2		
280-050-101	19 1	340-050-101	19 1		
290-050-101	20 0	350-050-101	20 0		
300-050-101	21 9	360-050-101	21 9		
310-050-101	22 8	370-050-101	22 8		
320-050-101	23 7	380-050-101	23 7		
330-050-101	24 6	390-050-101	24 6		
340-050-101	25 5	400-050-101	25 5		
350-050-101	26 4	410-050-101	26 4		
360-050-101	27 3	420-050-101	27 3		
370-050-101	28 2	430-050-101	28 2		
380-050-101	29 1	440-050-101	29 1		
390-050-101	30 0	450-050-101	30 0		
400-050-101	31 9	460-050-101	31 9		
410-050-101	32 8	470-050-101	32 8		
420-050-101	33 7	480-050-101	33 7		
430-050-101	34 6	490-050-101	34 6		
440-050-101	35 5	500-050-101	35 5		
450-050-101	36 4	510-050-101	36 4		
460-050-101	37 3	520-050-101	37 3		
470-050-101	38 2	530-050-101	38 2		
480-050-101	39 1	540-050-101	39 1		
490-050-101	40 0	550-050-101	40 0		
500-050-101	41 9	560-050-101	41 9		
510-050-101	42 8	570-050-101	42 8		
520-050-101	43 7	580-050-101	43 7		
530-050-101	44 6	590-050-101	44 6		
540-050-101	45 5	600-050-101	45 5		
550-050-101	46 4	610-050-101	46 4		
560-050-101	47 3	620-050-101	47 3		
570-050-101	48 2	630-050-101	48 2		
580-050-101	49 1	640-050-101	49 1		
590-050-101	50 0	650-050-101	50 0		
600-050-101	51 9	660-050-101	51 9		
610-050-101	52 8	670-050-101	52 8		
620-050-101	53 7	680-050-101	53 7		
630-050-101	54 6	690-050-101	54 6		
640-050-101	55 5	700-050-101	55 5		
650-050-101	56 4	710-050-101	56 4		
660-050-101	57 3	720-050-101	57 3		
670-050-101	58 2	730-050-101	58 2		
680-050-101	59 1	740-050-101	59 1		
690-050-101	60 0	750-050-101	60 0		
700-050-101	61 9	760-050-101	61 9		
710-050-101	62 8	770-050-101	62 8		
720-050-101	63 7	780-050-101	63 7		
730-050-101	64 6	790-050-101	64 6		
740-050-101	65 5	800-050-101	65 5		
750-050-101	66 4	810-050-101	66 4		
760-050-101	67 3	820-050-101	67 3		
770-050-101	68 2	830-050-101	68 2		
780-050-101	69 1	840-050-101	69 1		
790-050-101	70 0	850-050-101	70 0		
800-050-101	71 9	860-050-101	71 9		
810-050-101	72 8	870-050-101	72 8		
820-050-101	73 7	880-050-101	73 7		
830-050-101	74 6	890-050-101	74 6		
840-050-101	75 5	900-050-101	75 5		
850-050-101	76 4	910-050-101	76 4		
860-050-101	77 3	920-050-101	77 3		
870-050-101	78 2	930-050-101	78 2		
880-050-101	79 1	940-050-101	79 1		
890-050-101	80 0	950-050-101	80 0		
900-050-101	81 9	960-050-101	81 9		
910-050-101	82 8	970-050-101	82 8		
920-050-101	83 7	980-050-101	83 7		
930-050-101	84 6	990-050-101	84 6		
940-050-101	85 5	1000-050-101	85 5		

**INVENTORY
FILES**

INVENTORY FILES - COUNTY

The following files were established for the inventory.

1. PARCEL SUMMARY SHEETS:

- a. Description: The Parcel Summary Sheet documents and summarizes the data discovered for a given parcel (see Exhibit A for a sample Sheet). A separate sheet is available for each inventory parcel. Note: These sheets are working documents; thus, the format and data included will vary somewhat from area to area.
- b. Files: Parcel Summary Sheets are filed exclusively within the Inventory files. The files are arranged by county, and within each county, by page/line number.

2. ARTIFICIAL FEATURE/ACTION RECORDS:

The following artificial feature or action records were compiled during the inventory.

SHORELINE INSPECTION REPORTS (SIR)

- a. Description: These reports describe and document the findings of the shoreline inspection work (usually actual on-site, field inspections). Each report consists of a) a short, concise narrative summary, b) detailed field notes (see Exhibit B for sample notes), c) snapshots, d) reference plats (reduced assessor's plats) and e) tide prediction table.
- b. Files: The files are arranged by county, and the individual reports are filed chronologically. The Summary Maps included within also reference the Shoreline Inspection Reports (see white pages).

LIST OF SOURCES FOR OFFICE RESEARCH

- a. Description: This is a complete list of all sources used during office research. Sources include aerial photos, selected maps, publications, etc. The list also serves as an index for identifying the source of data for other listings.
- b. Files: The lists are compiled by county and are filed in front of the "abstract" file (see below).

ABSTRACTS FROM OFFICE RESEARCH

- a. Description: This file contains all the "raw" material accumulated during the office research. Examples of material included are lists of possible artificial features from aerial photography, abstracts from articles, notes from historical maps, and copies of selected pages from publications. The format of the material included varies widely to meet the conditions of the sources.

- b. Files: The abstract files are arranged by county. Within each county, the files are divided into three subfiles - "aerial photos", "maps", and "other".

SUMMARIES OF HISTORICAL ARTIFICIAL FEATURE/ACTION DATA

- a. Description: These are tabulations of the historical artificial features and actions discovered during the inventory study. A separate summary is prepared for each county. For each item discovered, the summary provides a description, approximate location, dates, and reference source. The items tabulated in geographic order.
- b. Files: The summaries are filed by county.

NOTE: All artificial feature or action records are filed exclusively within the "inventory" files.

3. MAPS:

- a. Description: For the inventory, an attempt was made to acquire those maps applicable to the State/upland boundary. The success of this effort varied, depending primarily on the completeness of the county's map indexing system.
- b. Files: All maps used in the inventory work are filed in the State Lands Map Library (Sacramento). The maps are indexed by the standard State Lands map indexing system. The Summary Maps also reference the applicable maps (see white pages).

4. DOCUMENTS:

- a. Description: Documents acquired during the inventory consist primarily of vesting records, deeds, patents, executive orders, etc. An attempt was made to obtain the latest vesting document for each inventory parcel, but this was not always feasible.
- b. Files: These records are filed exclusively within the inventory files. The files are arranged by county. Within each county, the files are separated by type of document, deeds, official records, executive orders, etc., and also by miscellaneous maps. Within the subfiles, documents are filed by recording number and miscellaneous maps are filed alphabetically. The Summary Maps also reference the miscellaneous maps (see white pages).

5. AERIAL PHOTOGRAPHY:

- a. Description: Two sets of aerial photography were acquired for the inventory - one current and one historical. The current photography is in color and has a scale of about 1" = 400'. The historical photography varies in scale and date. Generally, the scale is greater than 1" = 2000' and the photography date is prior to 1942. For inventory purposes we selected aerial photography which covered relatively long stretches of shoreline; thus, better historical photography might be available for specific areas.

- b. Files: All aerial photography used in the inventory is filed in the State Lands Aerial Photography File (Sacramento). The photographs are geographically indexed by the standard State Lands aerial photography indexing system. The Parcel Summary Sheets (see "1", above) also reference the aerial photographs.

6. LITIGATION:

- a. Description: As part of the inventory process, court cases indexed by the State Lands Records section were researched. This work created two types of records: a) "Litigation - Case Listings", which list cases discovered within a geographical area and those cases selected for further review, and b) "Litigation Summary Sheets", which provide a preliminary legal review of the selected cases.
- b. Files: The two specific records described above are filed within the inventory files. The material is arranged by county. Within each county the "listings" are filed first, followed by the "Summary Sheets" in order by case number. Court documents and other reference materials are filed in State Lands Legal section files in Sacramento. Court cases that appear to directly affect the State/upland boundary location are referenced on the Summary Maps (see white pages).

7. MISCELLANEOUS:

In addition to the files specifically established or used during the inventory (as noted above) the State Lands record system in Sacramento includes many other files which were researched for the inventory. The principal files utilized are listed below. Data from these files is included in the material previously described:

- a. Tideland Sales
- b. Swamp and Overflowed Land Sales
- c. Granted Lands (Legislative grants)
- d. Spanish/Mexican Grants (ranchos, pueblos, missions, presidios)
- e. Boundary Line Agreements
- f. Sovereign Land Locations
- g. Public Notices
- h. Work Orders
- i. Publication Library
- j. Historical Quads
- k. Historical Topographic and Hydrographic Charts

PARCEL SUMMARY SHEET

IDENTIFICATION: Prepared by _____ Date _____

County: _____ Assessor's No.: _____
 Quad: _____ Document No.: _____
 Z/N/E: _____ Geographic Id.: _____
 Adj. Assessor No.: North/East _____ South / West _____

DESCRIPTION REVIEW: Prepared by _____ Date _____

Type	Ownership	Title Derived From
Metes & Bounds <input type="checkbox"/>	USA <input type="checkbox"/>	Spanish/Mexican Grant <input type="checkbox"/>
Subdivision <input type="checkbox"/>	State <input type="checkbox"/>	S Patent <input type="checkbox"/>
Sectional <input type="checkbox"/>	County <input type="checkbox"/>	Tideland Sale <input type="checkbox"/>
Other <input type="checkbox"/>	City <input type="checkbox"/>	Swamp & Overflowed <input type="checkbox"/>
	Regional <input type="checkbox"/>	Other <input type="checkbox"/>
	Private <input type="checkbox"/>	Unknown <input type="checkbox"/>
Shoreline Distance _____ Ft.±		

Call Along Water Line	References	File	Problems
Water, not specific <input type="checkbox"/>	_____ <input type="checkbox"/>	_____ <input type="checkbox"/>	_____
Ordinary High Water <input type="checkbox"/>	_____ <input type="checkbox"/>	_____ <input type="checkbox"/>	_____
Other Water Line <input type="checkbox"/>	_____ <input type="checkbox"/>	_____ <input type="checkbox"/>	_____
Metes & Bounds Line <input type="checkbox"/>	_____ <input type="checkbox"/>	_____ <input type="checkbox"/>	_____
Questionable <input type="checkbox"/>	_____ <input type="checkbox"/>	_____ <input type="checkbox"/>	_____
Other <input type="checkbox"/>	_____ <input type="checkbox"/>	_____ <input type="checkbox"/>	_____

BOUNDARY LINE CONDITION: Prepared by _____ Date _____

Condition	Type of Influence	Evidence
Natural <input type="checkbox"/>	Pier/Dock <input type="checkbox"/>	_____
Artificial <input type="checkbox"/>	Pipe <input type="checkbox"/>	_____
Study Required <input type="checkbox"/>	Jetty/Groin <input type="checkbox"/>	_____
* Estimated Hours _____	Breakwater <input type="checkbox"/>	_____
Special Considerations:	Fill <input type="checkbox"/>	_____
BLA <input type="checkbox"/> YES <input type="checkbox"/> NO	Shore Protection <input type="checkbox"/>	_____
Quiet Title Action <input type="checkbox"/> YES <input type="checkbox"/> NO	Dredging <input type="checkbox"/>	_____
Other <input type="checkbox"/> YES <input type="checkbox"/> NO	Other <input type="checkbox"/>	_____
Describe: _____	Urban <input type="checkbox"/> Rural <input type="checkbox"/>	_____

COMPARISON & SELECTION: Prepared by _____ Date _____

Determination	Basis of Decision
Map/Description Selected <input type="checkbox"/>	_____
Study Required <input type="checkbox"/>	_____
* Estimated Hours _____	_____
* Priority _____	_____

Reviewed _____ Date _____ Input Prepared _____ Date _____

SHORELINE INSPECTION NOTES

COUNTY:		WEATHER / WATER:		DATE:	
GEOGRAPHIC AREA:				SHEET OF	
RECORDER:		PHOTOGRAPHER:		OBSERVER:	
APN(S) OF INSPECTION SITE:		ACCESS:			
TIME OBSERVED:		TIDE ELEV. (REF. MLLW): OBS - MHW -			
CURRENT AERIAL PHOTO(S):					
OBSERVED SHORELINE CONDITION: <input type="checkbox"/> NATURAL <input type="checkbox"/> ARTIFICIAL			INSPECTION TYPE: <input type="checkbox"/> CONTINUOUS <input type="checkbox"/> SPOT		SNAPSHOT REFERENCES:
DESCRIPTION OF INFLUENCE:				SHOW ON CURRENT PHOTO: <input type="checkbox"/> YES <input type="checkbox"/> NO	
ESTIMATED LENGTH INFLUENCED:			ELEVATION ABOVE (+) OR BELOW (-): OBSERVED TIDE - MHW -		
ACTION OR PROBLEM BEING CAUSED: <input type="checkbox"/> ACCRETION <input type="checkbox"/> EROSION <input type="checkbox"/> PREVENT EROSION <input type="checkbox"/> OTHER (See "Remarks")					
BENEFIT: <input type="checkbox"/> PUBLIC <input type="checkbox"/> PRIVATE <input type="checkbox"/> QUESTIONABLE			REMARKS:		
SURVEY PROBLEMS:					
PRIORITY:					
APN(S) OF INSPECTION SITE:		ACCESS:			
TIME OBSERVED:		TIDE:			
CURRENT AERIAL PHOTO(S):					
OBSERVED SHORELINE CONDITION: <input type="checkbox"/> NATURAL <input type="checkbox"/> ARTIFICIAL			INSPECTION TYPE: <input type="checkbox"/> CONTINUOUS <input type="checkbox"/> SPOT		SNAPSHOT REFERENCES:
DESCRIPTION OF INFLUENCE:				SHOW ON CURRENT PHOTO: <input type="checkbox"/> YES <input type="checkbox"/> NO	
ESTIMATED LENGTH INFLUENCED:			ELEVATION (REF. - WATER): OBSERVED TIDE - MHW -		
ACTION OR PROBLEM BEING CAUSED: <input type="checkbox"/> ACCRETION <input type="checkbox"/> EROSION <input type="checkbox"/> PREVENT EROSION <input type="checkbox"/> OTHER (See "Remarks")					
BENEFIT: <input type="checkbox"/> PUBLIC <input type="checkbox"/> PRIVATE <input type="checkbox"/> QUESTIONABLE			REMARKS:		
SURVEY PROBLEMS:					
PRIORITY:					

NOTE: IF INSPECTED "CONTINUOUS", AREAS BETWEEN INFLUENCES ARE "OBSERVED" NATURAL.