

**APPENDIX D
CALIFORNIA NATURAL DIVERSITY
DATABASE MAPS**

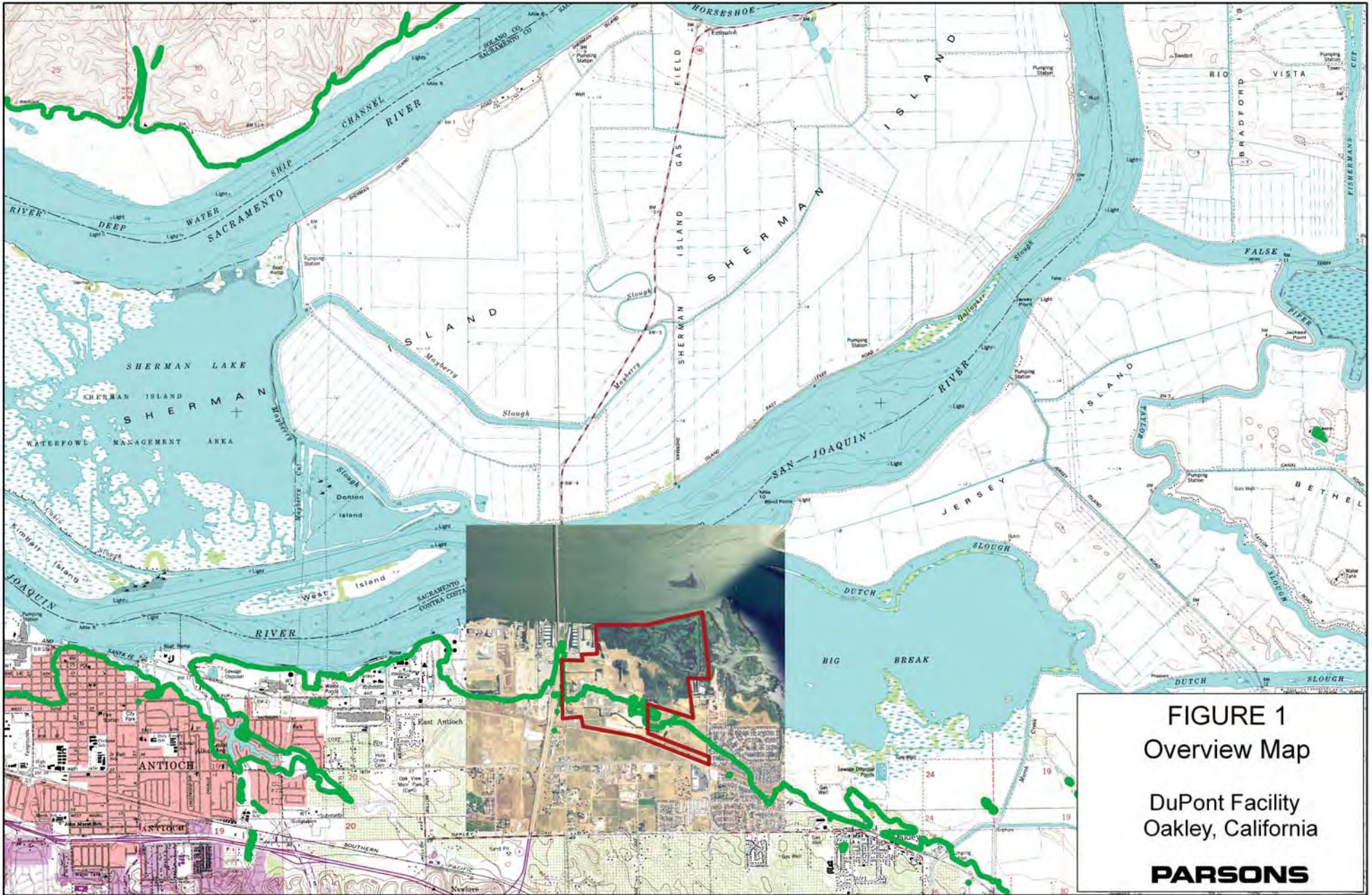




FIGURE 1
Overview Map

DuPont Facility
Oakley, California

PARSONS

- Legend**
-  Approximate Boundary of DuPont Oakley Site
 -  5 meters above sea level

0 500 1,000 2,000 3,000 4,000 5,000
absolute scale 1:60,000 Meters

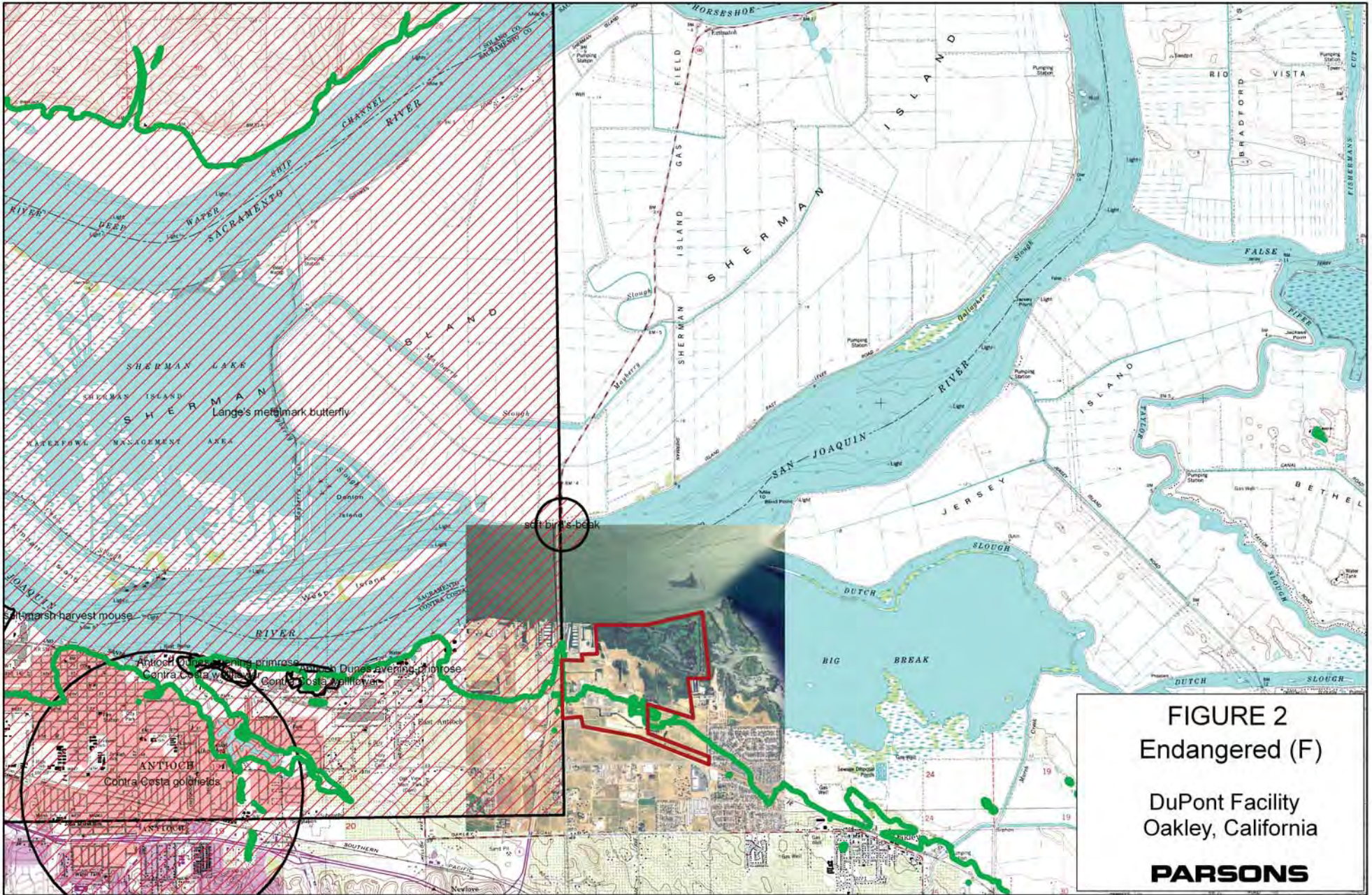
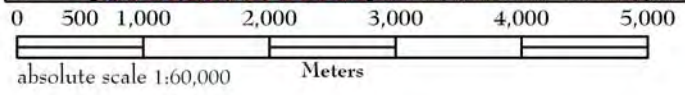
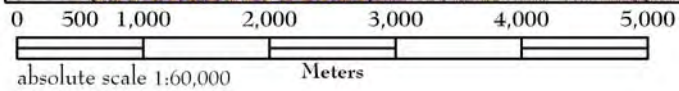
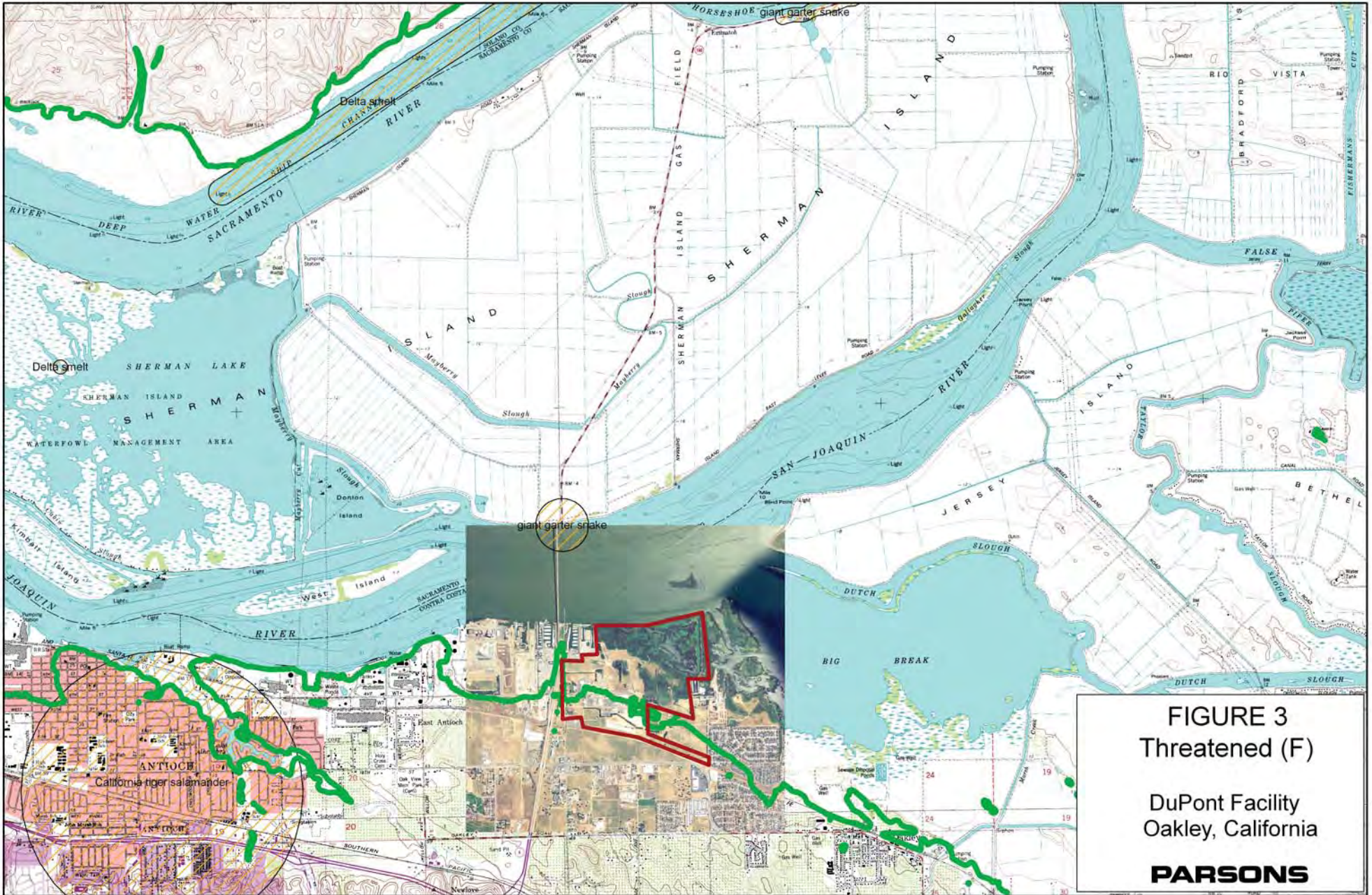


FIGURE 2
Endangered (F)
 DuPont Facility
 Oakley, California
PARSONS



- Federally Endangered Species known by the common name:
- Antioch Dunes evening-primrose
 - Contra Costa goldfields
 - Contra Costa wallflower
 - Lange's metalmark butterfly (* within half a mile)
 - salt-marsh harvest mouse
 - soft bird's-beak




- Legend**
- Approximate Boundary of DuPont Oakley Site
 - 5 meters above sea level
 - Species recorded by CNDB



Federally Threatened Species known by the common name:

- California tiger salamander
- Delta smelt
- giant garter snake

Legend

-  Approximate Boundary of DuPont Oakley Site
-  5 meters above sea level
-  Species recorded by CNDDB

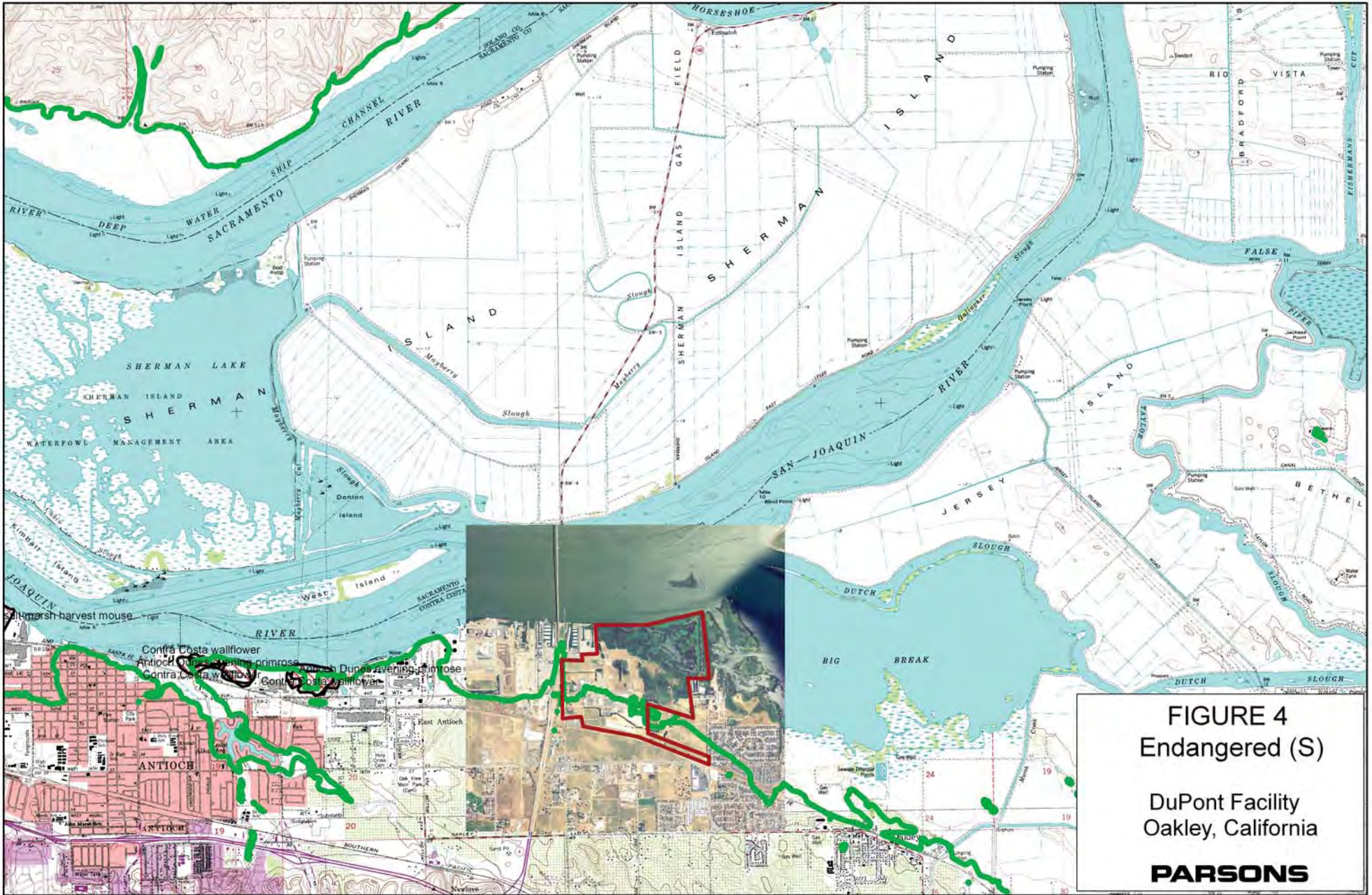
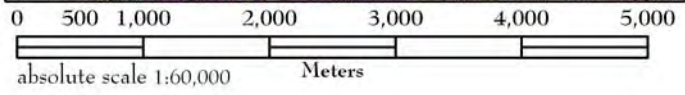


FIGURE 4
Endangered (S)
 DuPont Facility
 Oakley, California
PARSONS



State Endangered Species known by the common name:
 Antioch Dunes evening-primrose
 Contra Costa wallflower
 salt-marsh harvest mouse

- Legend**
- Approximate Boundary of DuPont Oakley Site
 - 5 meters above sea level
 - Species recorded by CNDB

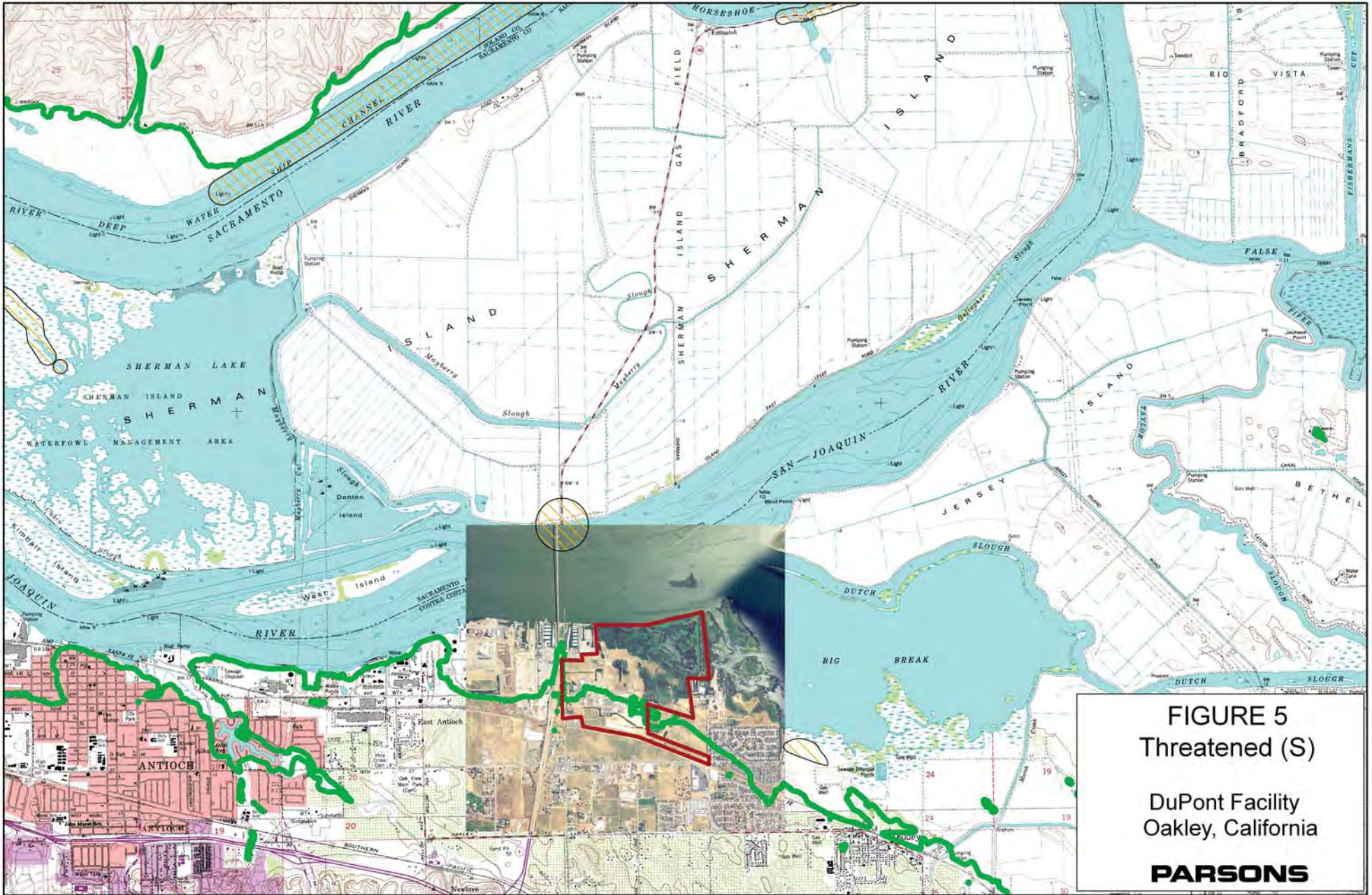
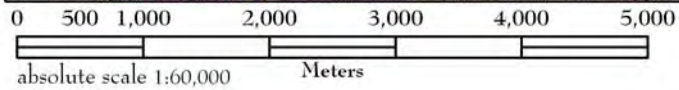


FIGURE 5
Threatened (S)
 DuPont Facility
 Oakley, California
PARSONS



State Threatened Species known by the common name:

- California black rail
- Delta smelt
- Swainson's hawk
- giant garter snake

Legend

- Approximate Boundary of DuPont Oakley Site
- 5 meters above sea level
- Species recorded by CNDDB

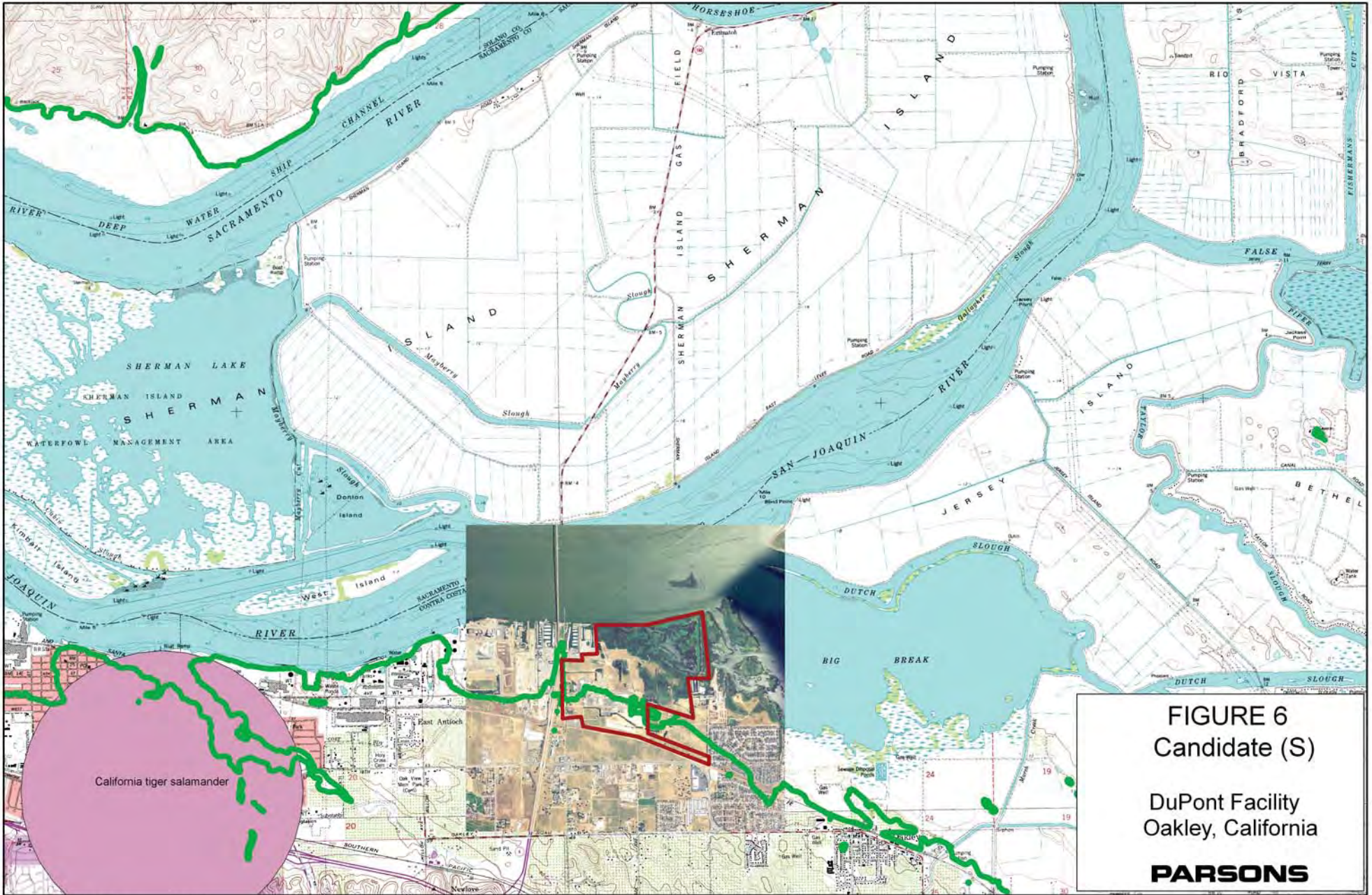
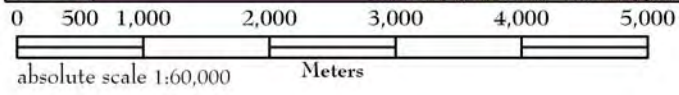


FIGURE 6
Candidate (S)
 DuPont Facility
 Oakley, California
PARSONS



State Candidate Endangered Species known
 by the common name:
 California tiger salamander

- Legend**
- Approximate Boundary of DuPont Oakley Site
 - 5 meters above sea level
 - Species recorded by CNDDB

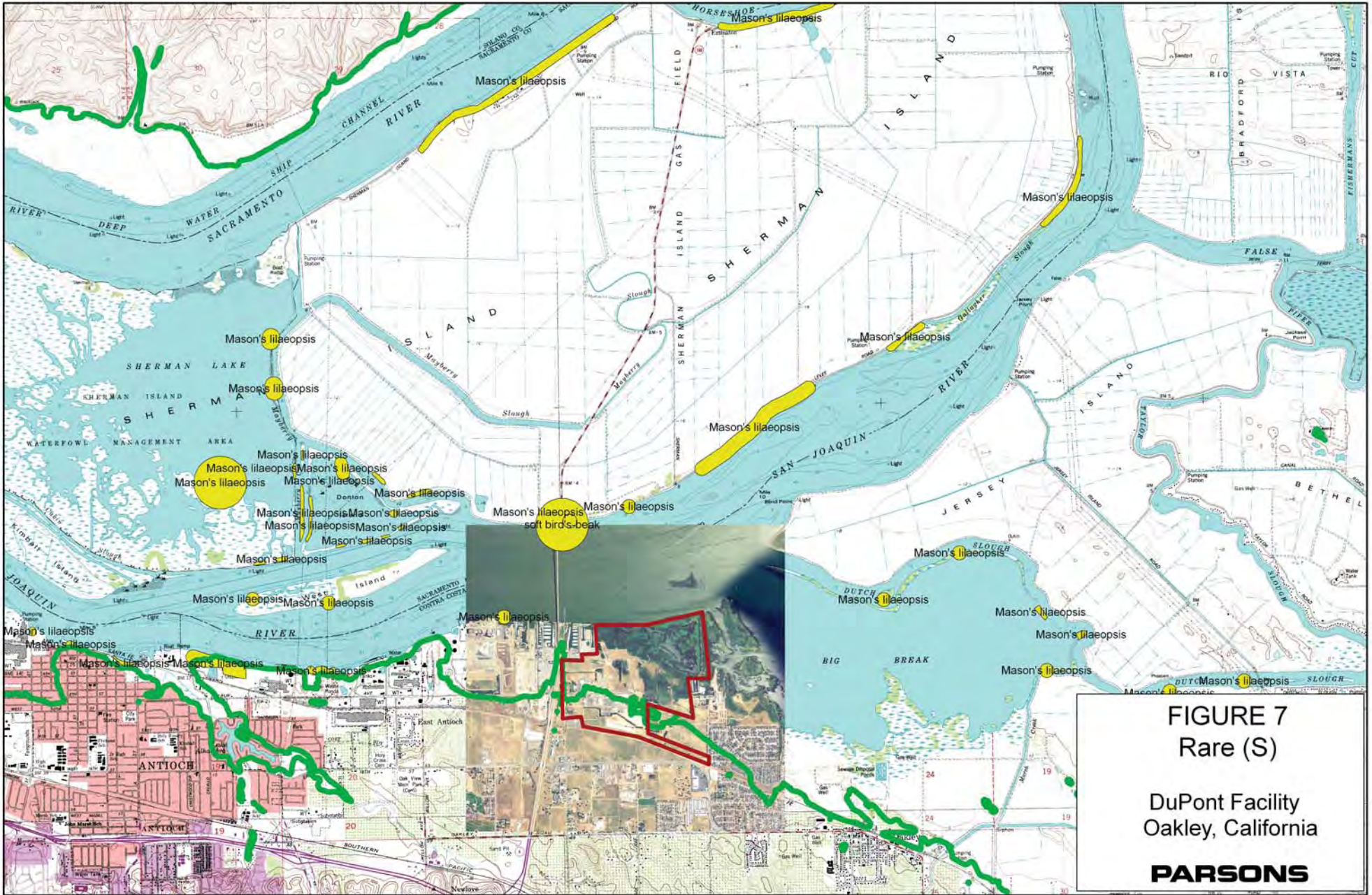


FIGURE 7
Rare (S)
 DuPont Facility
 Oakley, California
PARSONS

State Rare Species known by the common name:
 Mason's lilaepsis (* within half a mile)
 soft bird's-beak

- Legend**
- Approximate Boundary of DuPont Oakley Site
 - 5 meters above sea level
 - Species recorded by CNDDB

0 500 1,000 2,000 3,000 4,000 5,000
 absolute scale 1:60,000 Meters

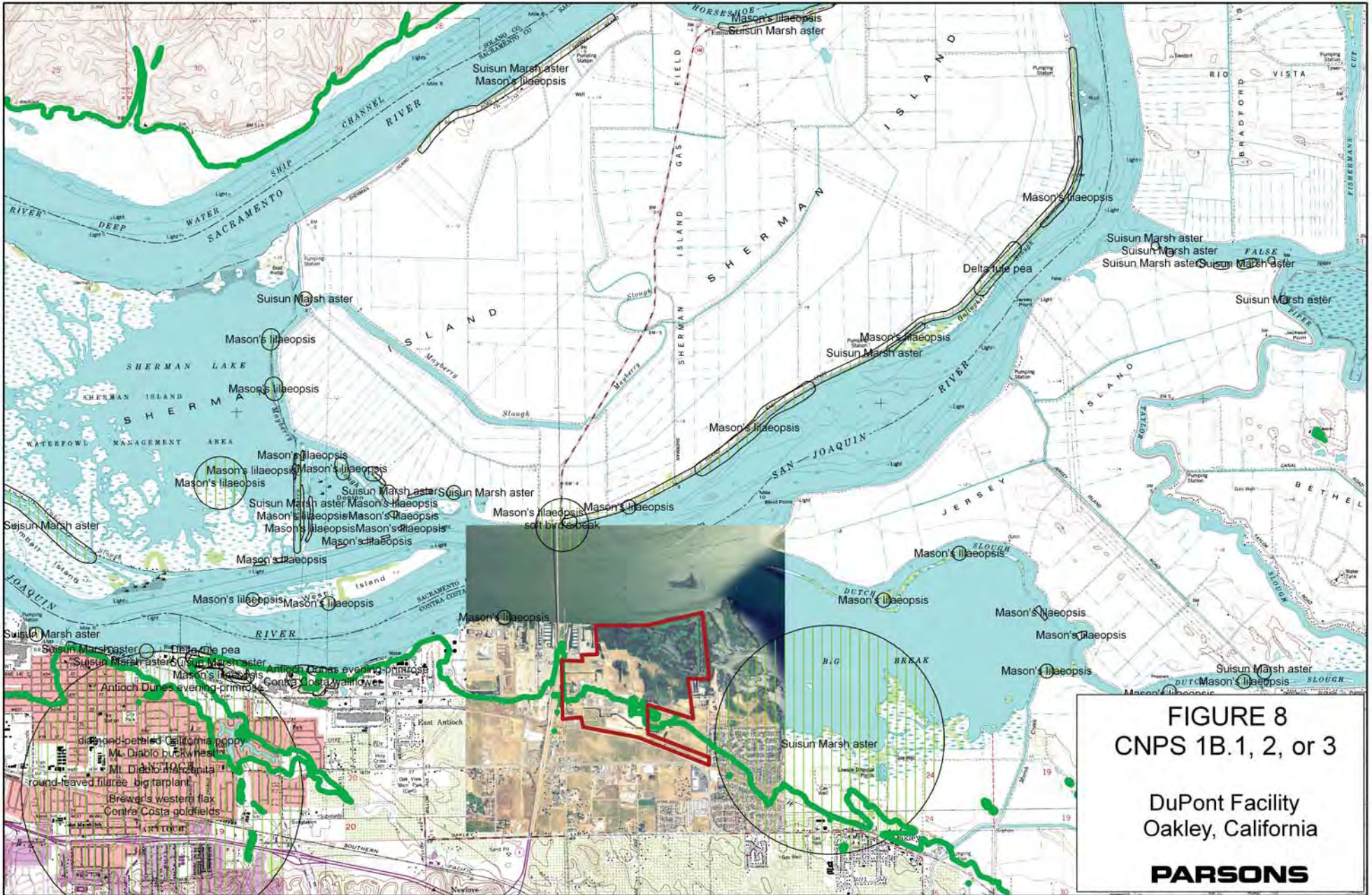
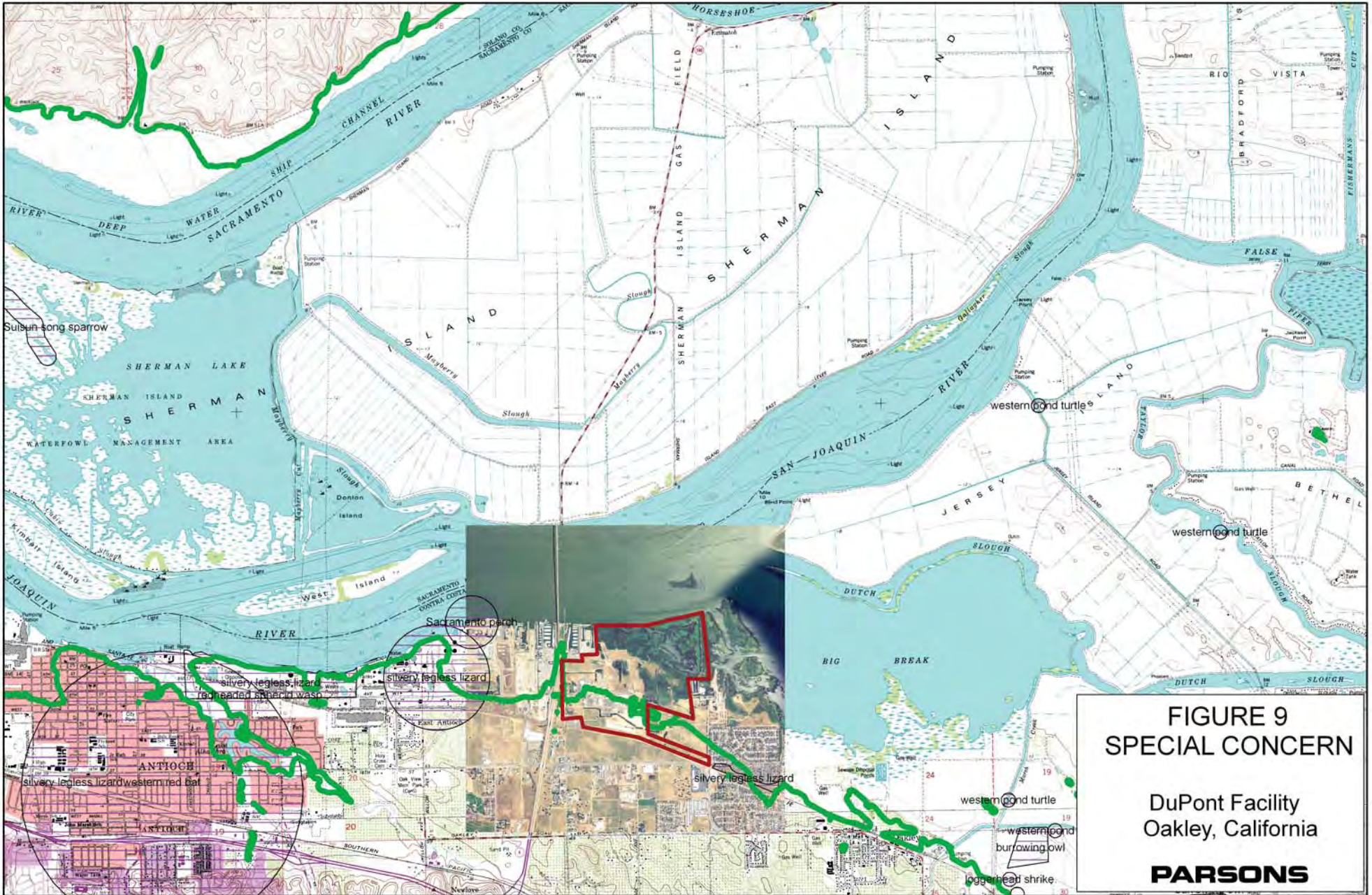


FIGURE 8
CNPS 1B.1, 2, or 3
 DuPont Facility
 Oakley, California
PARSONS

0 500 1,000 2,000 3,000 4,000 5,000
 absolute scale 1:60,000 Meters

- Legend**
- Approximate Boundary of DuPont Oakley Site
 - 5 meters above sea level
 - Species recorded by CNDDB

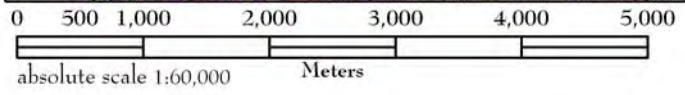
- State California Native Plant Society Species known by the common name:
- | | |
|---|---|
| Antioch Dunes evening-primrose | soft bird's-beak |
| Brewer's western flax | |
| Contra Costa goldfields | |
| Contra Costa wallflower | |
| Delta tule pea | |
| Mason's lilaeopsis (* within half a mile) | |
| | Mt. Diablo buckwheat |
| | Mt. Diablo manzanita |
| | round-leaved filaree |
| | Suisun Marsh aster (* within half a mile) |
| | big tarplant |
| | diamond-petaled California poppy |



**FIGURE 9
SPECIAL CONCERN**

DuPont Facility
Oakley, California

PARSONS



Legend

- Approximate Boundary of DuPont Oakley Site
- 5 meters above sea level
- California_special_concern_taxa

State species of special concern known by the common name:

- | | |
|---------------------|---|
| Sacramento perch | redheaded sphecid wasp |
| Suisun song sparrow | silvery legless lizard (* within half a mile) |
| burrowing owl | western pond turtle |
| loggerhead shrike | western red bat |