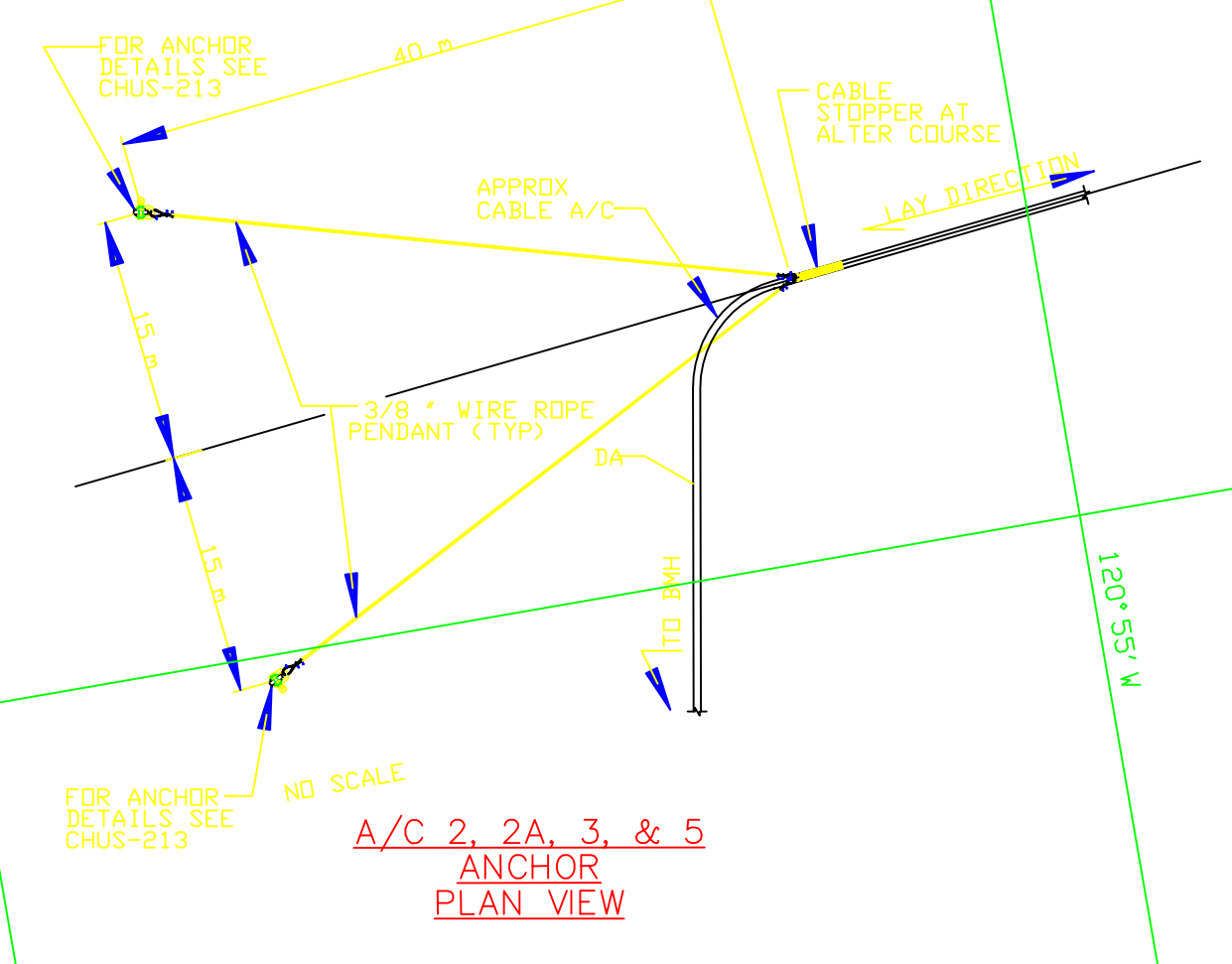
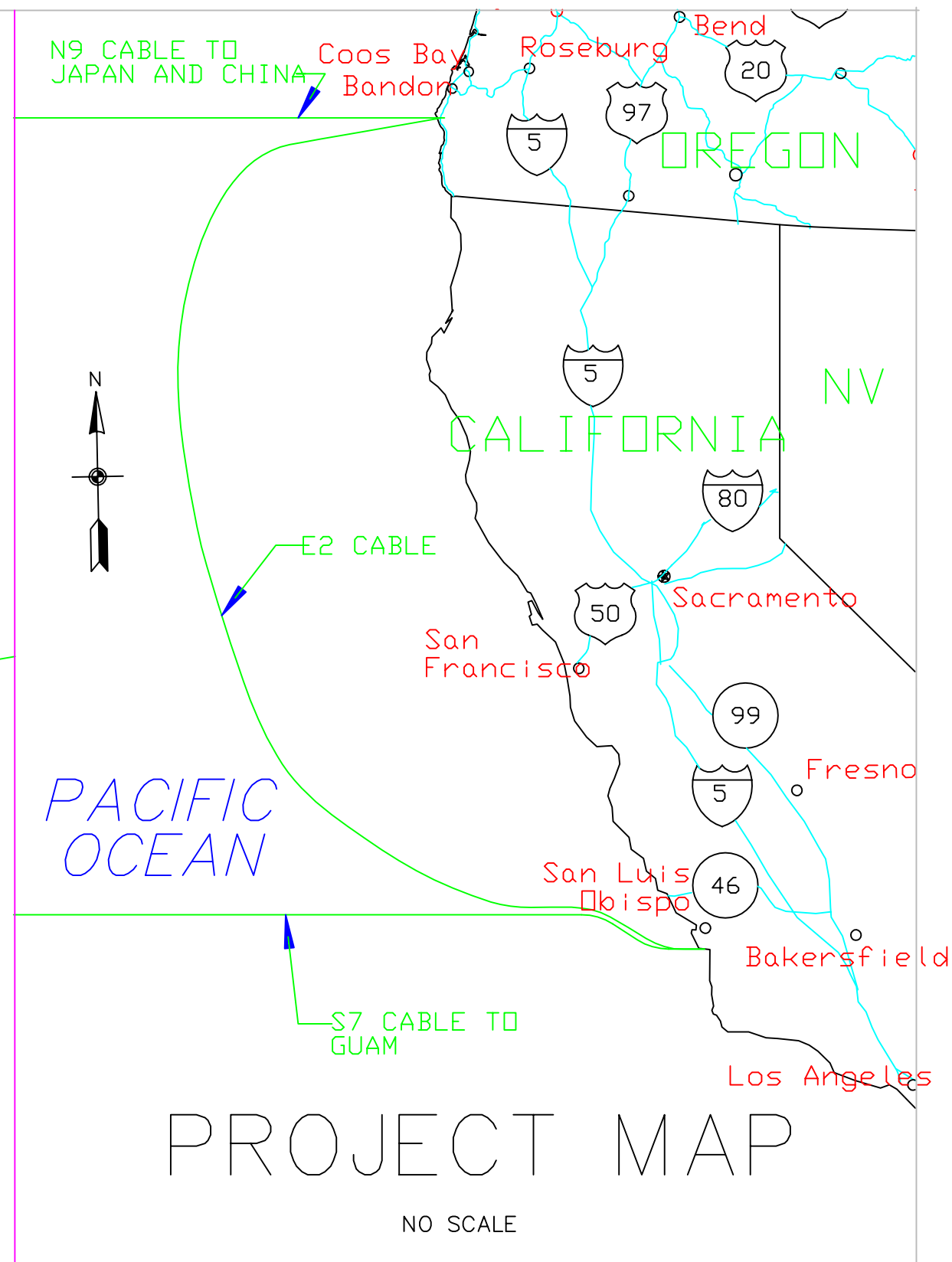


AS-LAID ROUTE POSITION LIST							
POSITION NUMBER	EVENT TITLE	LATITUDE	LONGITUDE	WATER DEPTH (m)	INCREMENT ROUTE DISTANCE (km)	INCREMENT CABLE DISTANCE (km)	ACTUAL ROUTE DISTANCE SAILED (km)
001	SAN LUIS OBISPO BMH	35° 18. 019' N	120° 52. 342' W	0	0. 000	0. 000	0. 000
002	A/C 1 BORE PIPE EXIT	35° 18. 292' N	120° 53. 071' W	10	1. 215	1. 215	1. 215
003	A/C 1A	35° 18. 392' N	120° 53. 212' W	15	0. 283	0. 283	1. 498
004	A/C 2	35° 18. 600' N	120° 53. 470' W	27	0. 549	0. 551	2. 047
005	JAPAN-US SEG 1 CROSSING	35° 18. 689' N	120° 53. 485' W	26	0. 166	0. 167	2. 213
006	A/C 2A	35° 18. 780' N	120° 53. 500' W	27	0. 170	0. 171	2. 383
007	SOUTHERN CROSS CROSSING	35° 18. 866' N	120° 53. 443' W	27	0. 181	0. 182	2. 564
008	JAPAN-US SEG 9 CROSSING	35° 18. 933' N	120° 53. 399' W	26	0. 141	0. 141	2. 705
009	SB13C DA-HS/LWA	35° 19. 363' N	120° 53. 115' W	0	0. 903	0. 908	3. 608
010	A/C 3	35° 19. 410' N	120° 53. 084' W	23	0. 099	0. 099	3. 707
011	A/C 4	35° 19. 645' N	120° 53. 084' W	25	0. 436	0. 438	4. 143
012	A/C 5	35° 20. 035' N	120° 53. 205' W	31	0. 744	0. 747	4. 887
013	A/C 6	35° 20. 990' N	120° 54. 659' W	57	2. 823	2. 838	7. 710
014	SB13D LWAC/DA-HS	35° 21. 072' N	120° 55. 327' W	0	1. 023	1. 028	8. 733
015	3 nm LIMIT	35° 21. 137' N	120° 55. 857' W	72	0. 813	0. 817	9. 546



A/C CABLE ANCHOR DATA-SEGMENT E2					
A/C	ANCHOR NO.	ANCHOR TYPE	ANCHOR LATITUDE	ANCHOR LONGITUDE	ANCHOR BURIAL DEPTH (m)
2	2A	MR-SR	35° 18. 5834' N	120° 53. 4545' W	1. 07
	2B	MR-SR	35° 18. 5801' N	120° 53. 4761' W	1. 22
2A	2A-A	MR-SR	35° 18. 7713' N	120° 53. 7713' W	1. 13
	2A-B	MR-SR	35° 18. 7747' N	120° 53. 5203' W	1. 22
3	3A	MR-SR	35° 19. 3993' N	120° 53. 0680' W	1. 28
	3B	MR-SR	35° 19. 3998' N	120° 53. 0832' W	1. 17
5	5A	MR-SR	35° 20. 0139' N	120° 53. 1942' W	1. 22
	5B	MR-SR	35° 20. 0292' N	120° 53. 1776' W	1. 22

*STANDARD AC CABLE ANCHOR POSITIONING ROTATED TO AVOID INTERFERENCE WITH ROUTE POSITIONING; CONTRACTOR TO VERIFY ADEQUATE CLEARANCE FOR ANCHOR POSITIONING.

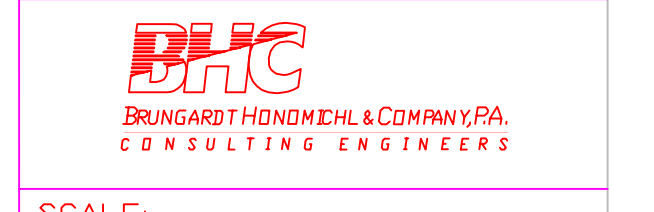


NO SCALE

- NOTES:
- ALL COORDINATES, STATING, BEARINGS, AND DISTANCES ARE BASED ON THE WORLD GEODETIC SYSTEM OF 1984, UTM ZONE 19, IN METERS.
 - ELEVATIONS AND CONTOURS ARE BASED ON THE NATIONAL GEODETIC VERTICAL DATUM OF 1929, IN METERS.
 - BORE PIPES HORIZONTAL AND VERTICAL ALIGNMENTS ARE BASED ON DATA PROVIDED BY AT&T AND WORLDCOM.
 - GROUND CONTOURS ON LAND ARE NOT SHOWN.
 - OCEAN CONTOURS WERE OBTAINED FROM RACAL PELAGOS BATHYMETRY AND SEABED FEATURES CHART 2 OF 3 REF. NO. RPI-1769-10031-02-02.
 - ROUTE POSITIONS BEYOND THE BORE PIPE ARE BASED ON RPL REVISION ISSUE 11, DATE 7-16-01.
 - EXISTING CABLE LOCATIONS ARE APPROXIMATE.

NO.	ISSUE	DATE	BY
	E2 AS BUILT ISSUE	JULY 2001	KD

I HEREBY CERTIFY THAT THESE PLANS WERE PREPARED BY ME OR UNDER MY RESPONSIBLE CHARGE AND THAT I AM A REGISTERED CIVIL ENGINEER IN THE STATE OF CALIFORNIA

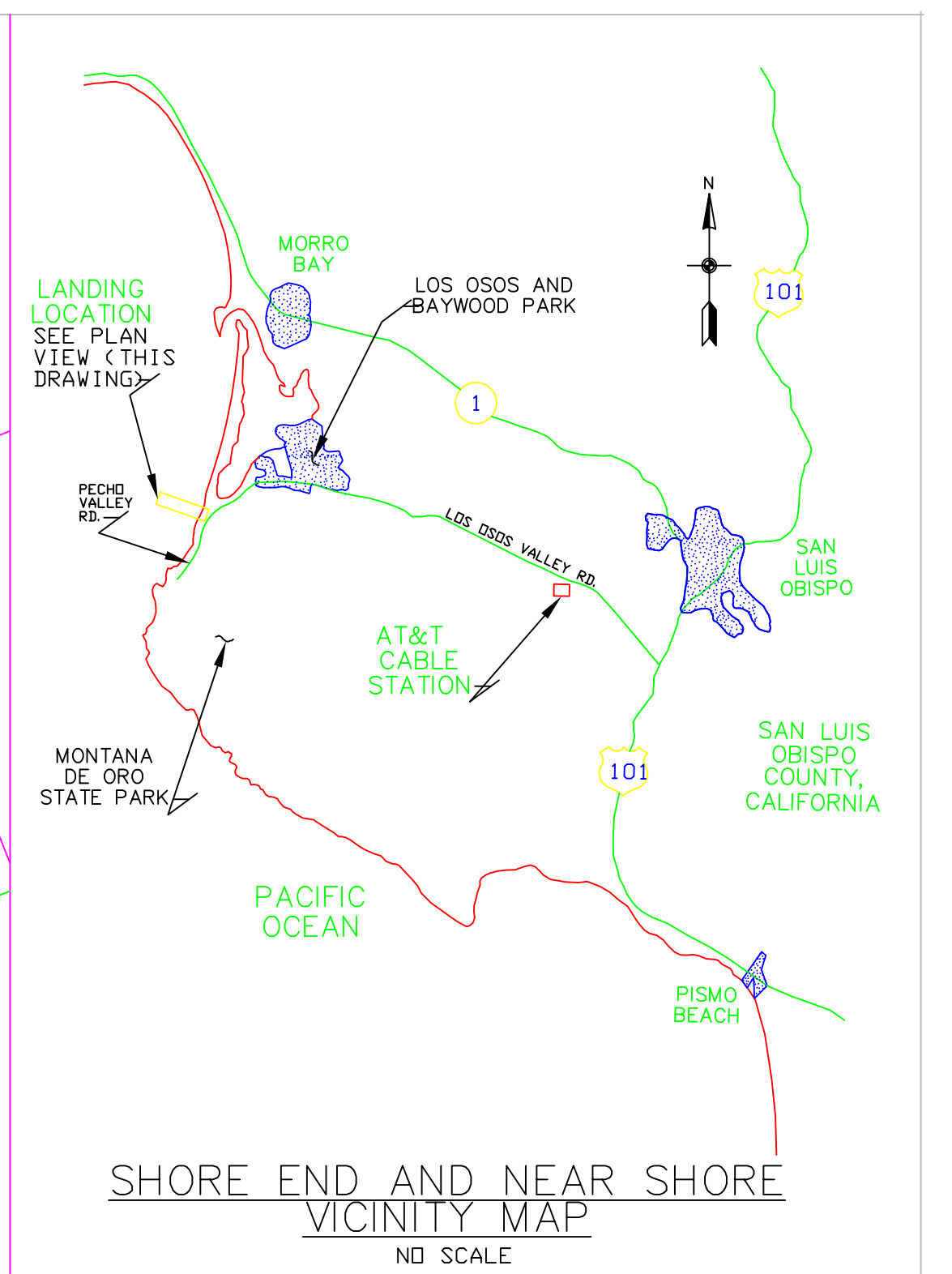
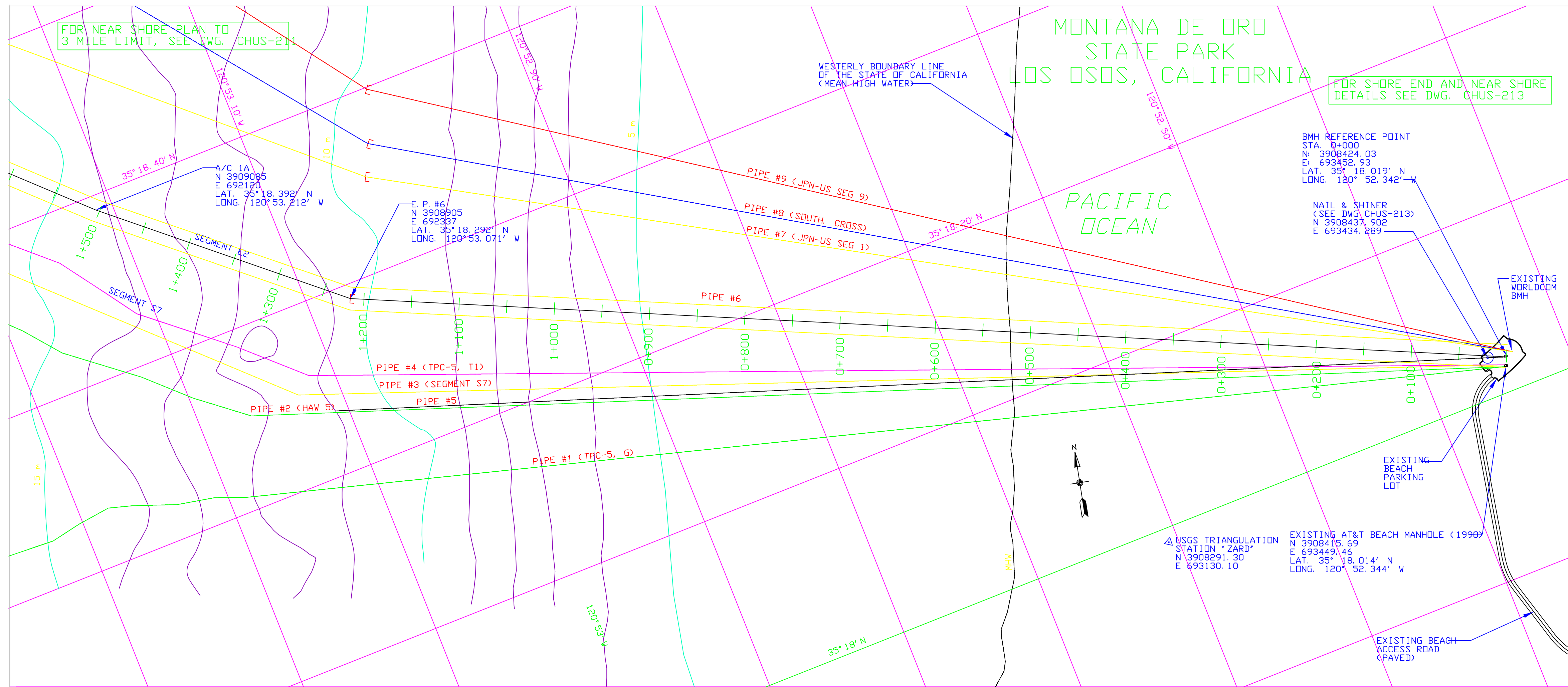


SCALE: 1 : 10000

TSSL APPROVAL
AS BUILT DRAWING APPROVED FOR RECORD.
SR. MANAGER DATE

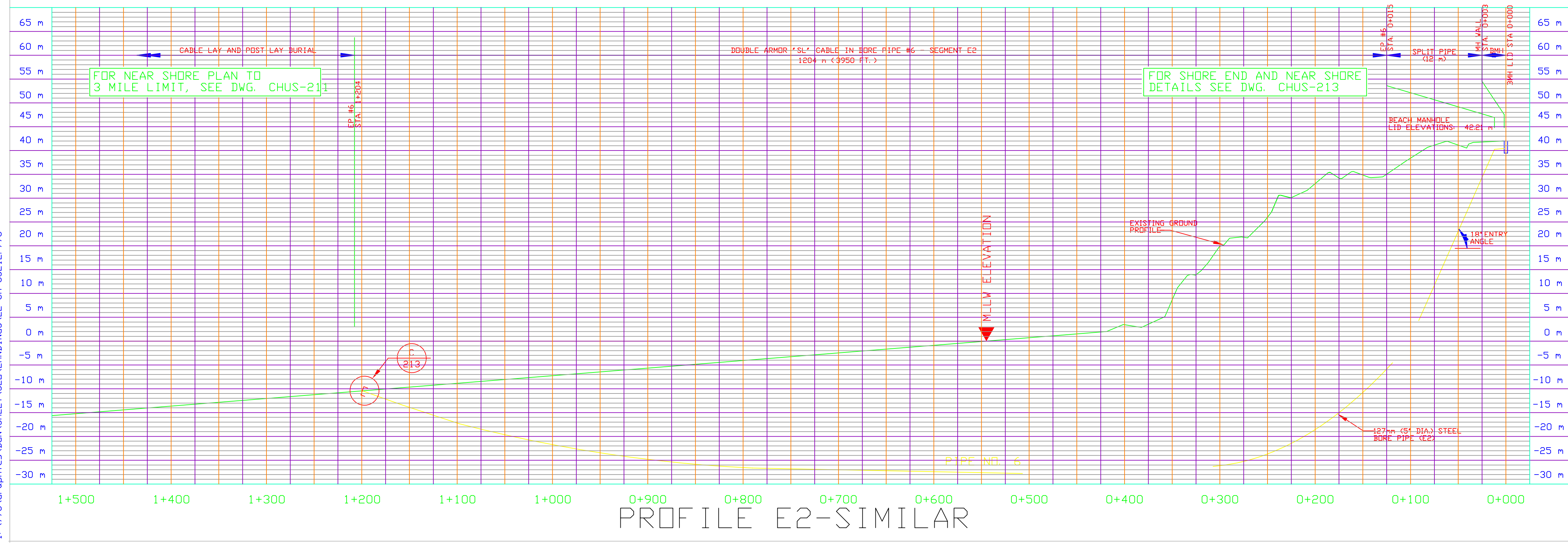
CHINA-U. S. CABLE NETWORK
SUBMARINE CABLE LANDINGS
SEGMENT E2
SAN LUIS OBISPO, CA
NEAR SHORE PLAN TO 3 MILE LIMIT

PROPRIETARY USE PURSUANT TO COMPANY INSTRUCTIONS DRAWING NUMBER: CHUS-211



- NOTES:**
1. ALL COORDINATES, STATIONING, BEARINGS, AND DISTANCES ARE BASED ON THE WORLD GEODETIC SYSTEM OF 1984, UTM ZONE 10, IN METERS.
 2. ELEVATIONS AND CONTOURS ARE BASED ON THE NATIONAL GEODETIC VERTICAL DATUM OF 1929, IN METERS.
 3. BORE PIPES HORIZONTAL AND VERTICAL ALIGNMENTS ARE BASED ON DATA PROVIDED BY AT&T AND WORLD DOOM.
 4. GROUND CONTOURS ON LAND NOT SHOWN.
 5. OCEAN CONTOURS OBTAINED FROM SEAFLOOR SURVEYS INTERNATIONAL CHART I OF 81, APRIL 20, 1991.

PLAN SEGMENT E2



NO.	ISSUE	DATE	BY
E2 AS BUILT ISSUE	JULY 2001	KD	

PROPRIETARY

I HEREBY CERTIFY THAT THESE PLANS WERE PREPARED BY ME OR UNDER MY RESPONSIBLE CHARGE AND THAT I AM A REGISTERED CIVIL ENGINEER IN THE STATE OF CALIFORNIA.

NO. _____ EXP. DATE _____

B+C
 BRUNGER, HONDIK, & COMPANY, P.A.
 CONSULTING ENGINEERS

SCALE: 1 : 2500 HORIZONTAL
 1 : 500 VERTICAL



TSSL APPROVAL
 AS BUILT DRAWING APPROVED
 FOR RECORD:

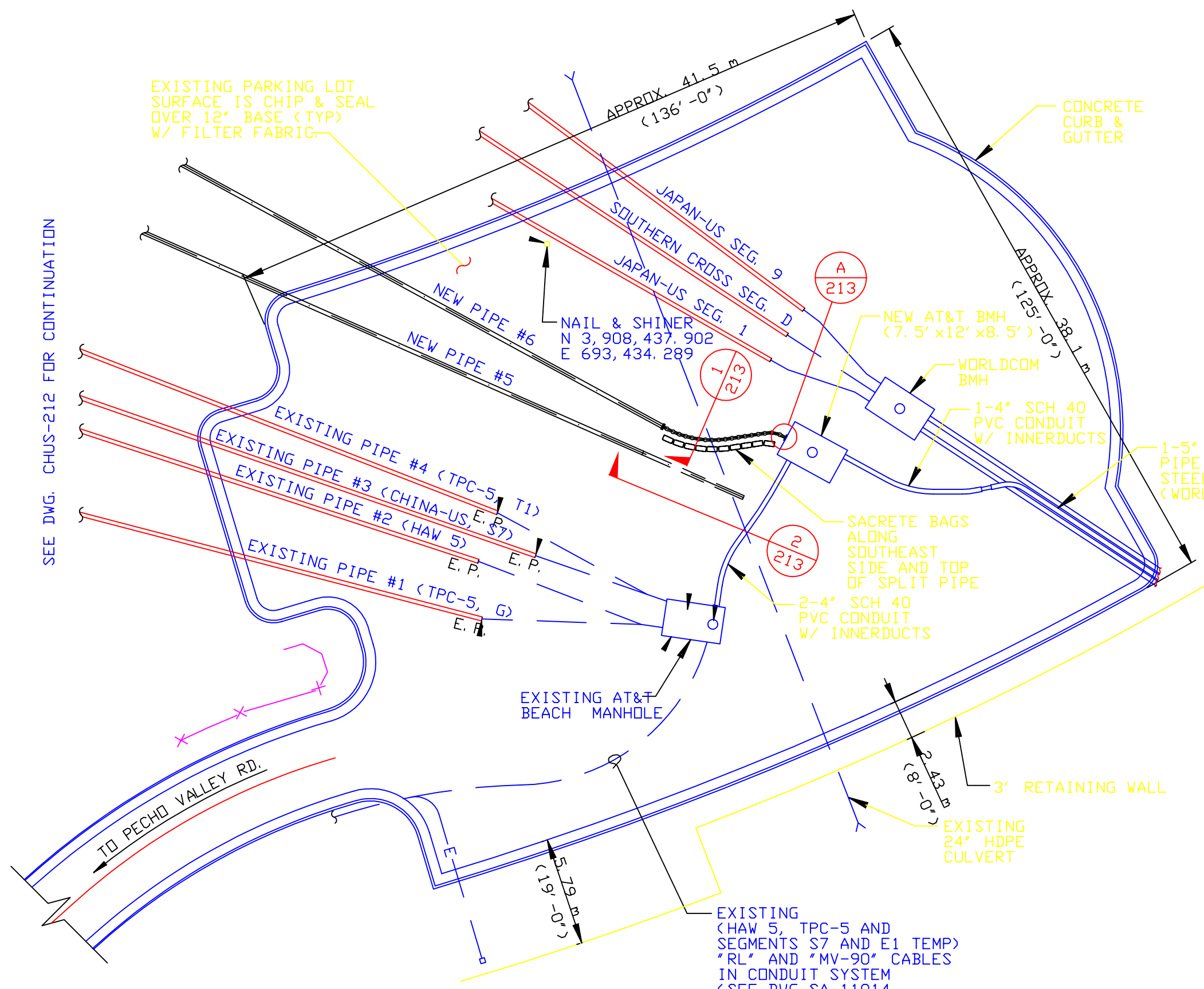
SR. MANAGER _____ DATE _____

CHINA-U. S. CABLE NETWORK
 SUBMARINE CABLE LANDINGS
 SAN LUIS OBISPO, CA
 SEGMENT E2

SHORE END AND NEAR SHORE PLAN AND PROFILE

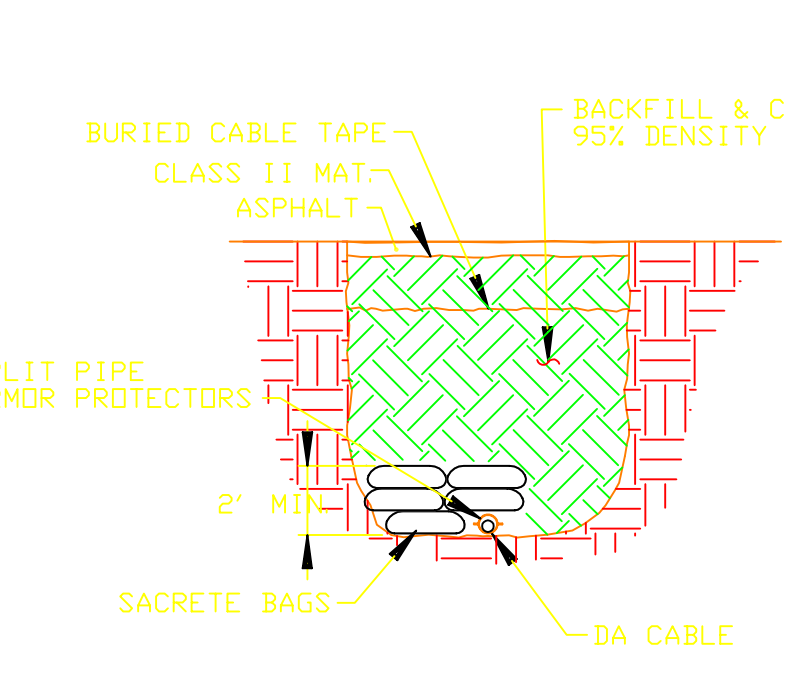
PROPRIETARY
 USE PURSUANT TO COMPANY INSTRUCTIONS

DRAWING NUMBER: CHUS-212



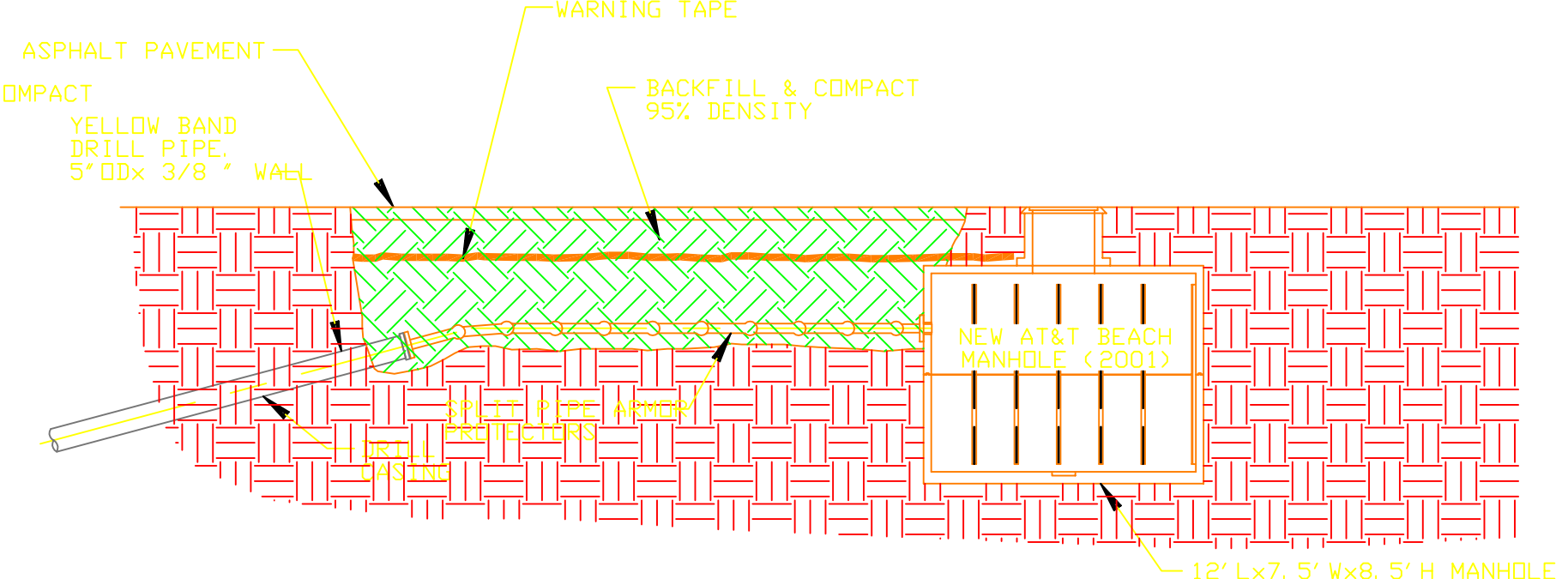
CABLE PULLING ARRANGEMENT PLAN

SCALE: 1:250 (1"=2.5' M)



1 CABLE TRENCH DETAIL

NO SCALE

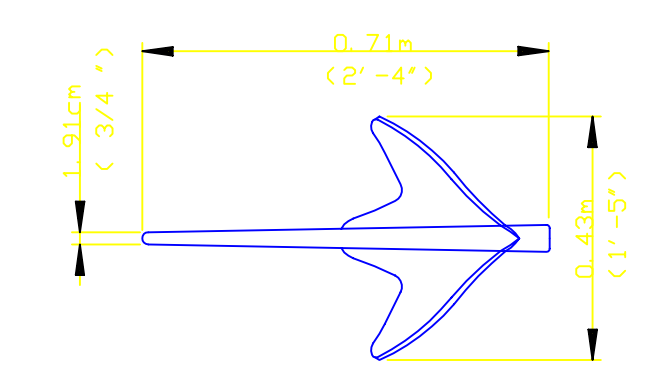


2 CABLE TRENCH PROFILE

NO SCALE

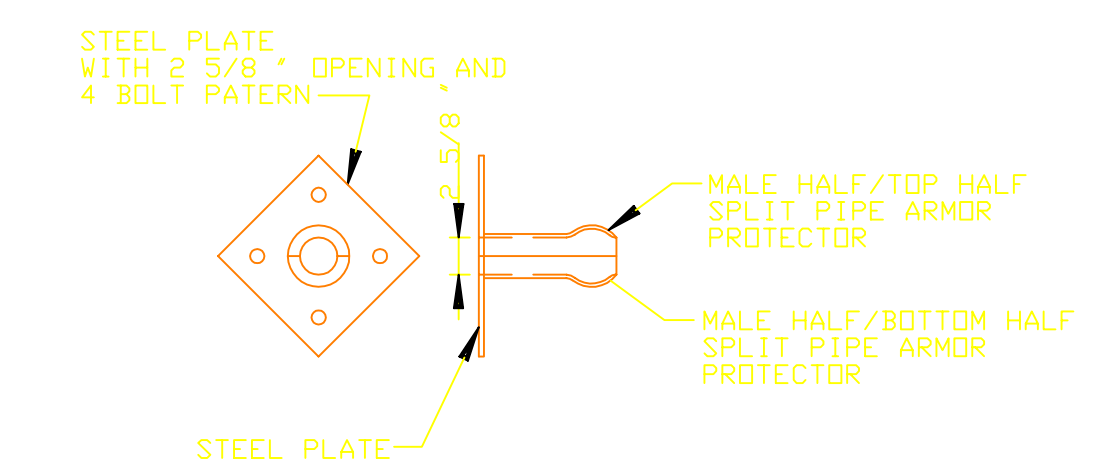
NOTES:

- FOR CABLE INFORMATION, SEE OVERLAND CABLE INSTALLATION DRAWINGS.
- SACRETE SACKS NOT SHOWN FOR CLARITY.
- PIPE #5 NOT SHOWN FOR CLARITY.



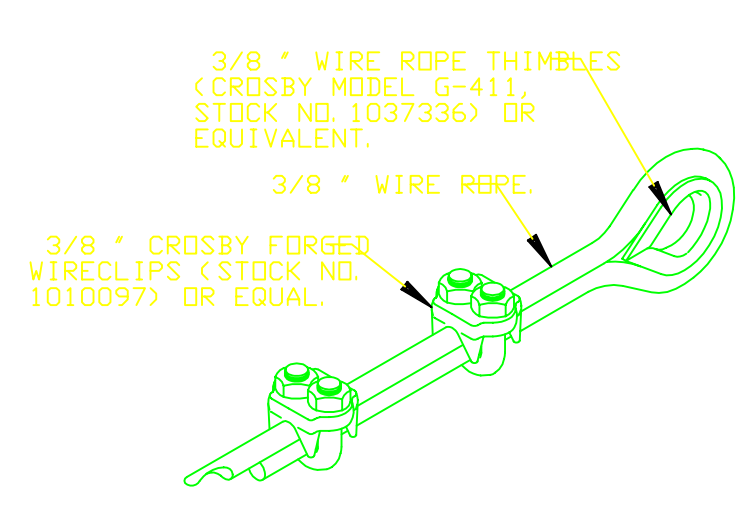
A/C CLAW ANCHOR DETAIL

NO SCALE



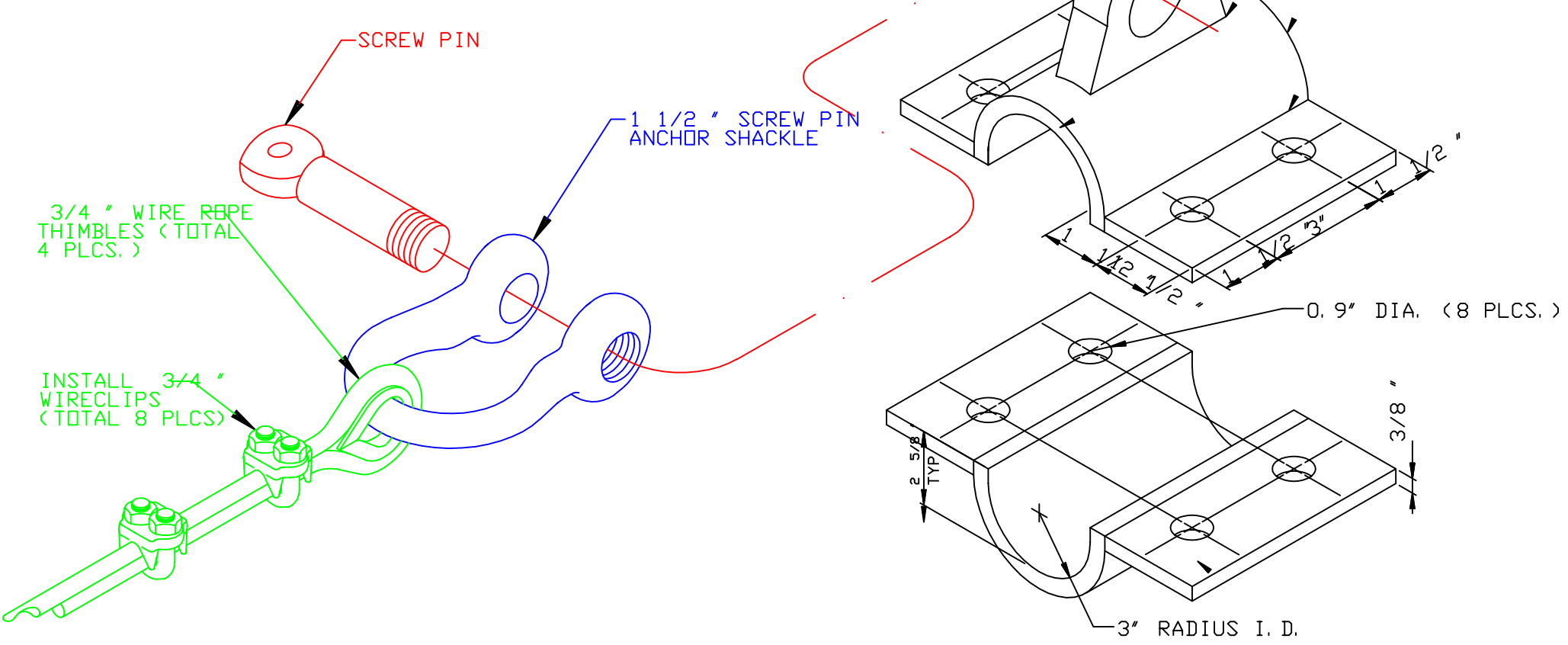
BMH SPLIT PIPE TERMINATION DETAIL

NO SCALE



WIRE ROPE PENDANT DETAIL

NO SCALE

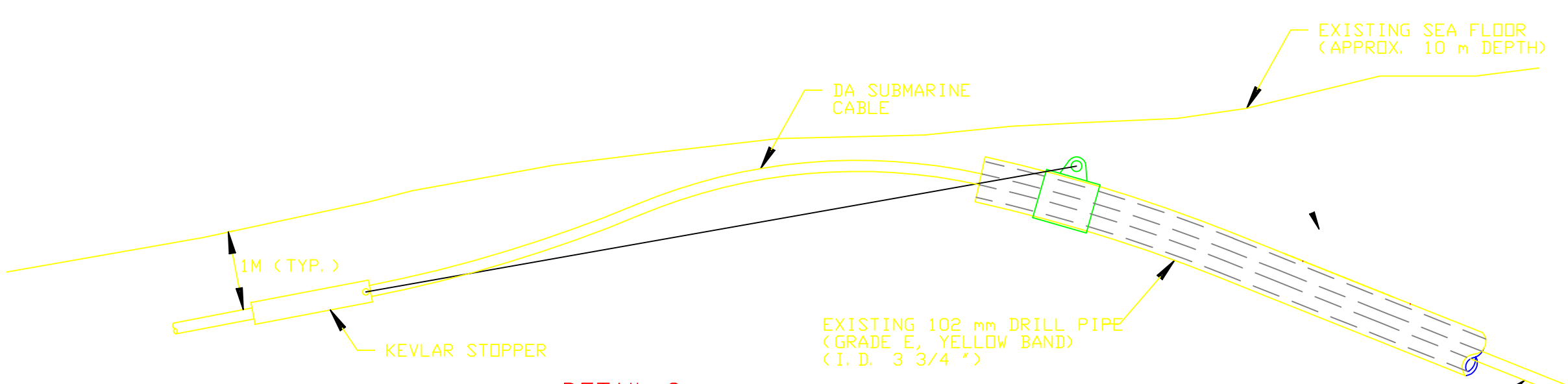


TENSION LINE ASSEMBLY DETAIL

NO SCALE

BORE PIPE CABLE STOPPER ANCHOR DETAIL

NO SCALE



DETAIL C END OF BORE PIPE #6 WITH CABLE STOPPER ANCHOR

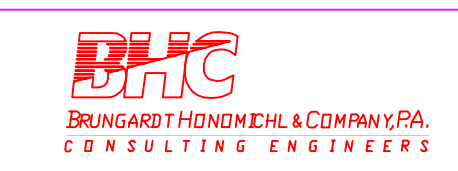
NO SCALE

CALL BEFORE YOU DIG 1-800-227-2600

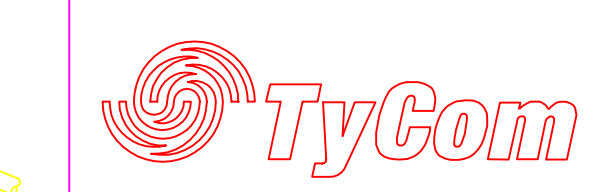
NOTES:

NO.	ISSUE	DATE	BY
	E2 AS BUILT ISSUE	JULY 2001	KD

I HEREBY CERTIFY THAT THESE PLANS WERE PREPARED BY ME OR UNDER MY RESPONSIBLE CHARGE AND THAT I AM A REGISTERED CIVIL ENGINEER IN THE STATE OF CALIFORNIA



SCALE: AS NOTED



TSSAL APPROVAL
AS BUILT DRAWING APPROVED FOR RECORD:
SR. MANAGER DATE

CHINA-U.S. CABLE NETWORK
SUBMARINE CABLE LANDINGS
SAN LUIS OBISPO, CA
SEGMENT E2
SHORE END AND NEAR SHORE DETAILS

PROPRIETARY
USE PURSUANT TO COMPANY INSTRUCTIONS

DRAWING NUMBER: CHUS-213