

California Department of Fish & Game

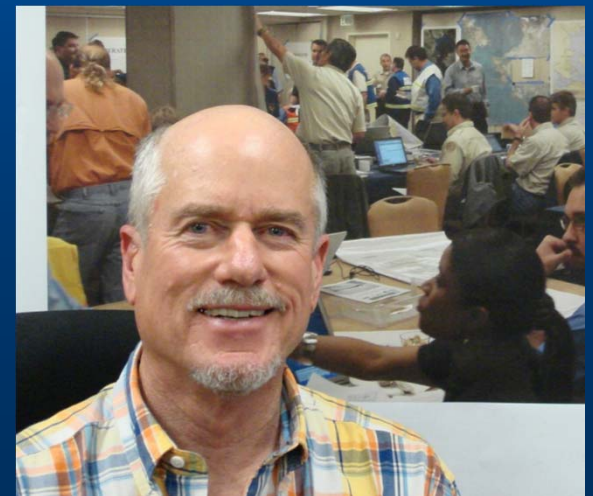
# Office of Spill Prevention and Response

## PERFORMANCE MEASURES FOR OSPR'S DRILLS AND EXERCISES UNIT



Prevention First  
October 2012

Mike Roskey, Ph.D.  
Research Program Specialist  
(916) 323-4683  
[mroskey@ospr.dfg.ca.gov](mailto:mroskey@ospr.dfg.ca.gov)



# Prevention First 2012

## Drills and Exercises Program

- Program description
- Building blocks for analysis
- Base Period performance: 2006 - 2008
- Program results: 2009 – 2011
- Calculating a Baseline
- Comparison: Baseline to Program results

# Drills and Exercises Unit

## **The mission of the Drills and Exercises Unit ...**

**is to work with industry, regulated agencies and stakeholders to design, conduct and evaluate exercises that promote improved oil spill response.**

# Drills and Exercises Unit

**Start date: January 2008**

- Assess response readiness of vessel and facility operators.
- Develop and implement procedures for drills required by OSPR's contingency plan regulations.
- Oversee design, conduct and evaluation of individual drills and assess performance of drill participants.

# Drills and Exercises Unit Goals

- **Enforce drills and exercises regulatory requirements.**
- **Develop outreach.**
- **Conduct effective drills.**
- **Improve the drill evaluation process.**
- **Improve OSPR and stakeholder drill attendance.**

# Counting Drills

## Drill Types:

- **Facility drills**
  - Equipment deployments
  - Table tops
- **Vessel drills**
  - Table tops

# Counting Drills

## Qualifiers:

- Total drills =
  - In state
- Eligible drills =
  - Proper notification
- Attended drills =
  - OSPR staff

# Determining base period

## Determining time period:

- Prior to implementation of regulations
- Comparable time span
- Comparable drill scheduling pattern



# Counting Drills

## Base period:

- FY 2006 - 2007
- FY 2007 - 2008
- 7/1/2008 – 12/31/2008

## Comparison period:

- 1/1/2009 – 12/31/2011

# Counting Attendance at Drills

**Data: OSPR staff attendance**

**–Field Response Team**

- **OSPS**
- **Scientist**
- **Warden**

**–All others**

# OSPR Base Period Drills

	FACILITY	FACILITY	VESSEL
	Equipment Deployment	Table Top	Table Top
2006 - 2007	64	44	10
2007 - 2008	69	44	12
7/1/2008 – 12/31/2008	61	48	3

# OSPR Base Period Attendance

	FACILITY	FACILITY	VESSEL
	Equipment Deployment	Table Top	Table Top
2006 - 2007	12	14	2
2007 - 2008	20	25	7
7/1/2008 – 12/31/2008	28	35	3

# OSPR Base Period Attendance

	FACILITY	FACILITY	VESSEL
	Equipment Deployment	Table Top	Table Top
2006 - 2007	48%	58%	67%
2007 - 2008	45%	86%	88%
7/1/2008 – 12/31/2008	68%	95%	100%

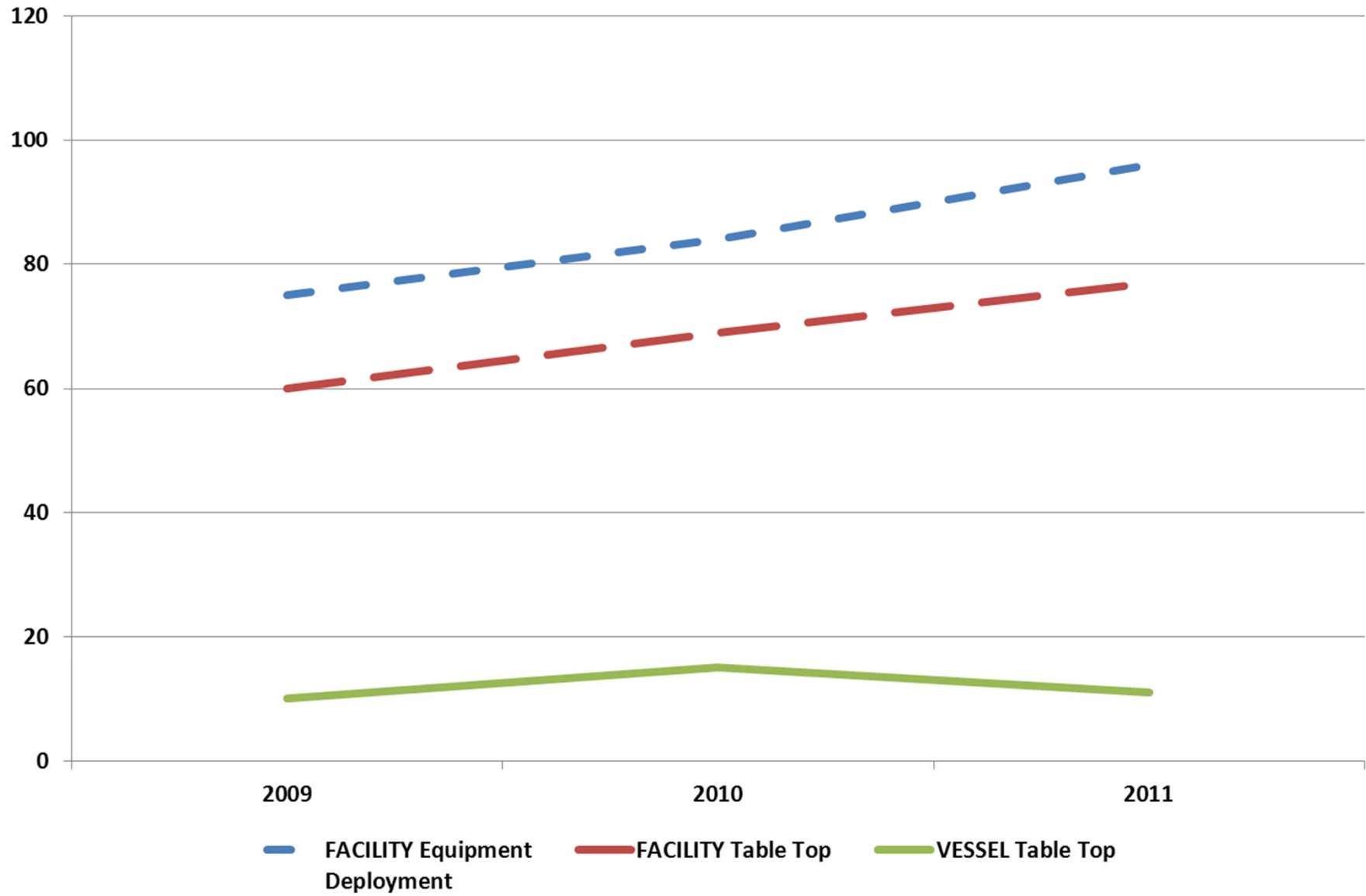
# OSPR Base Period Hours

	FACILITY	FACILITY	VESSEL
	Equipment Deployment	Table Top	Table Top
2006 - 2007	128	218	61
2007 - 2008	135	645	497
7/1/2008 – 12/31/2008	150	774	52

# OSPR Drills

	FACILITY	FACILITY	VESSEL
	Equipment Deployment	Table Top	Table Top
2009	75	60	10
2010	83	65	15
2011	95	76	11

## OSPR DRILLS

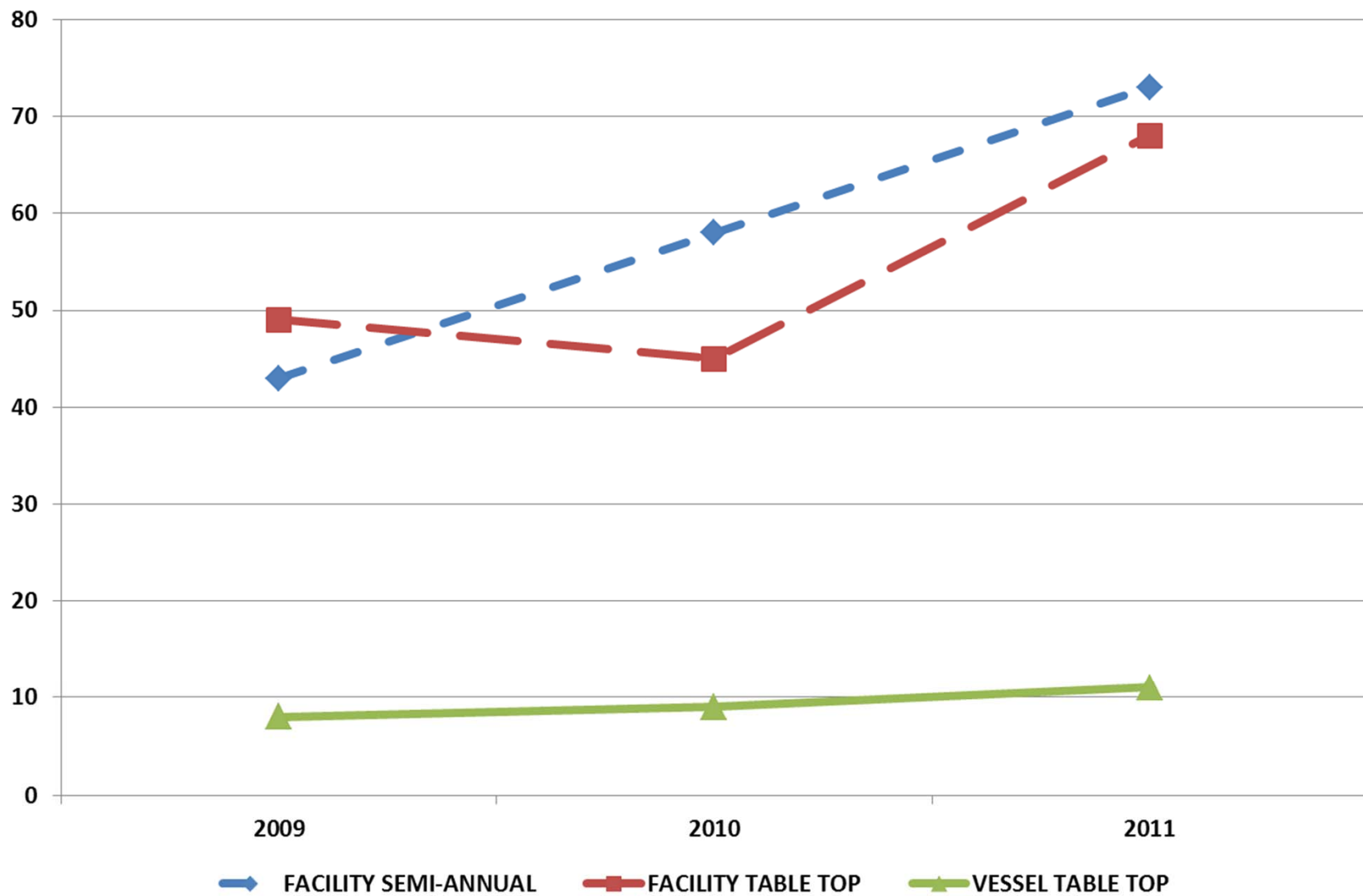




# OSPR Attendance

	FACILITY	FACILITY	VESSEL
	Equipment Deployment	Table Top	Table Top
2009	43	49	8
2010	58	45	9
2011	73	68	11

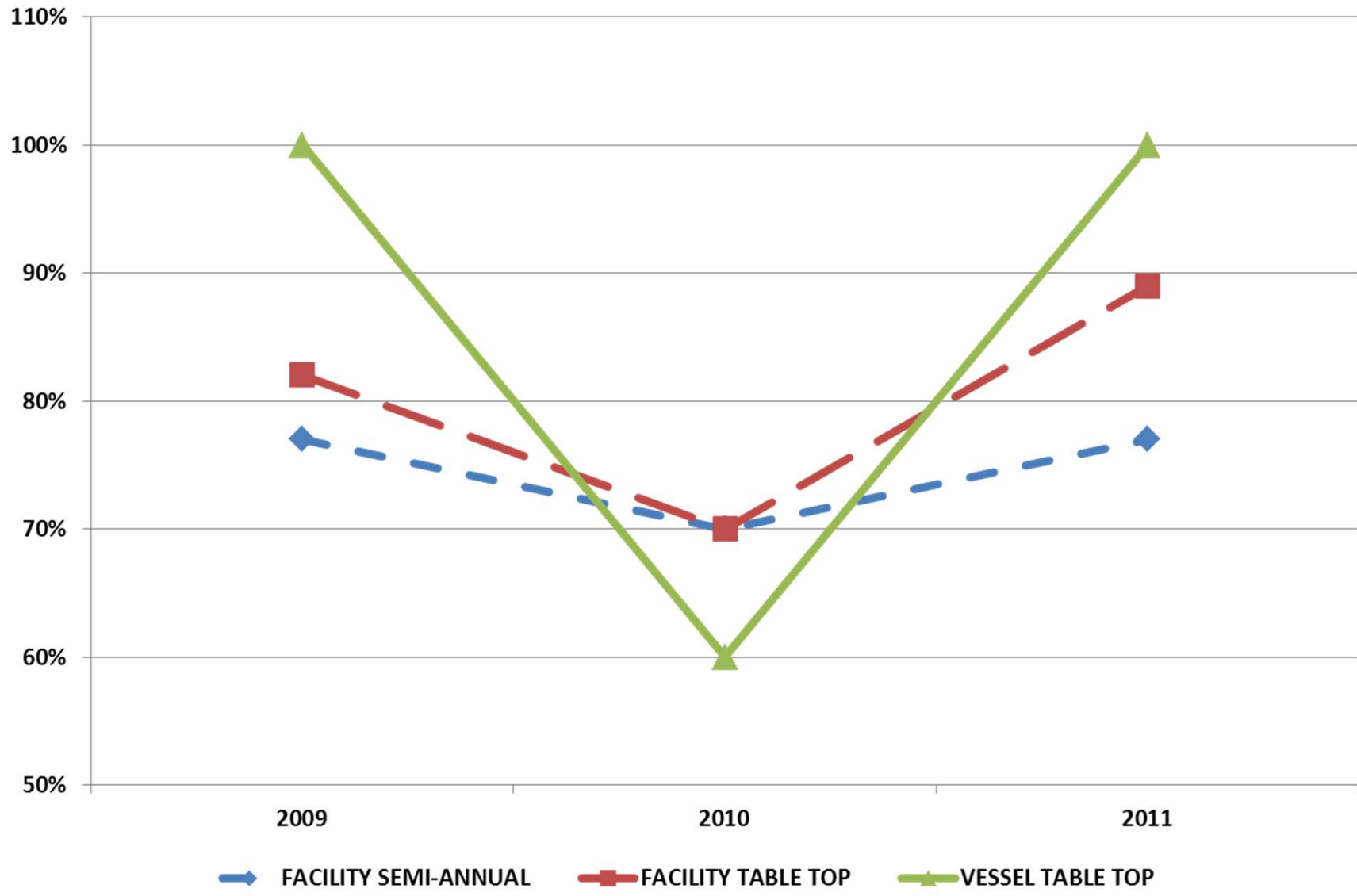
## NUMBER ATTENDED



# OSPR Attendance

	FACILITY	FACILITY	VESSEL
	Equipment Deployment	Table Top	Table Top
2009	77%	82%	100%
2010	70%	69%	60%
2011	77%	89%	100%

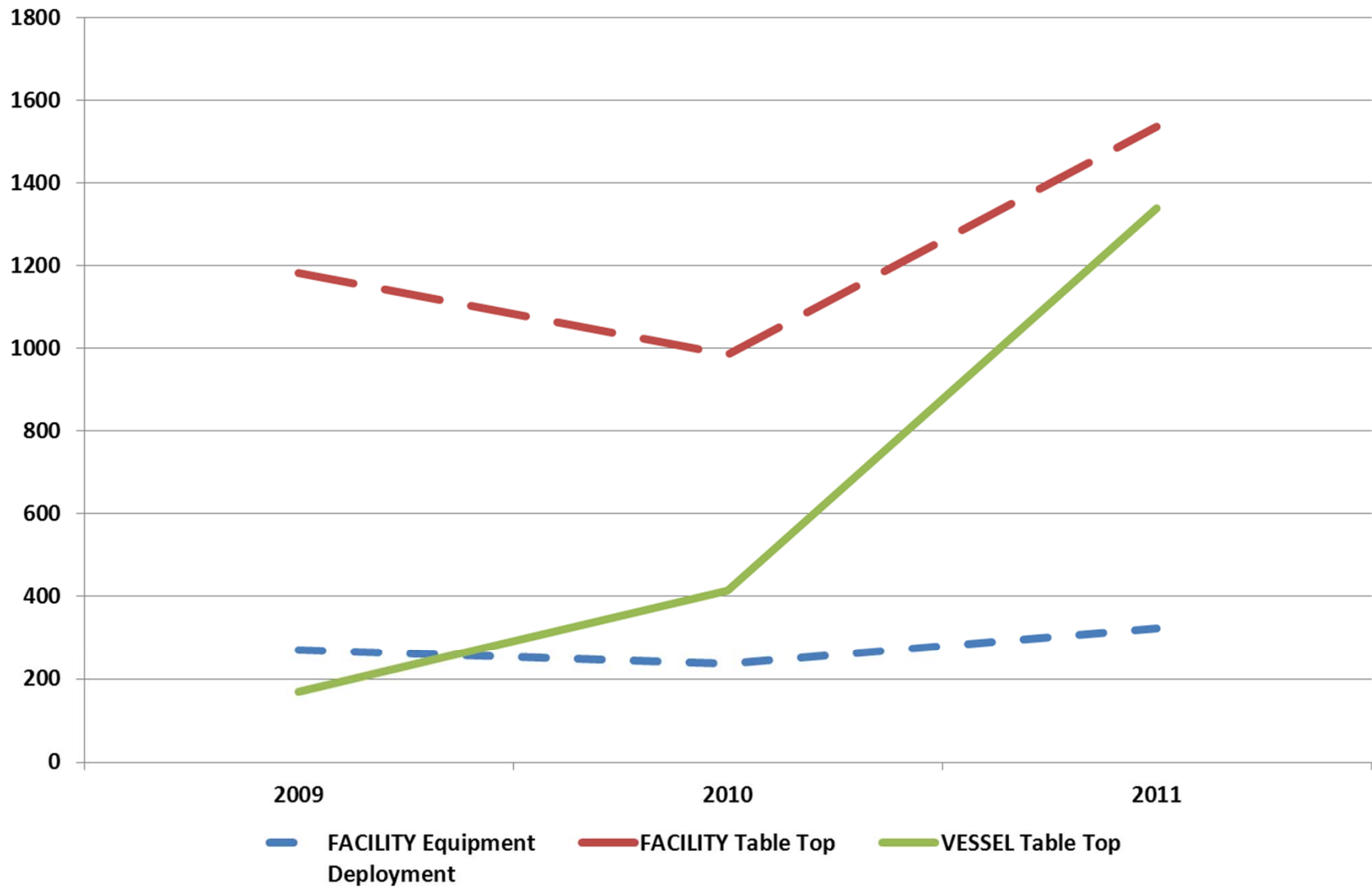
## PERCENT ATTENDED



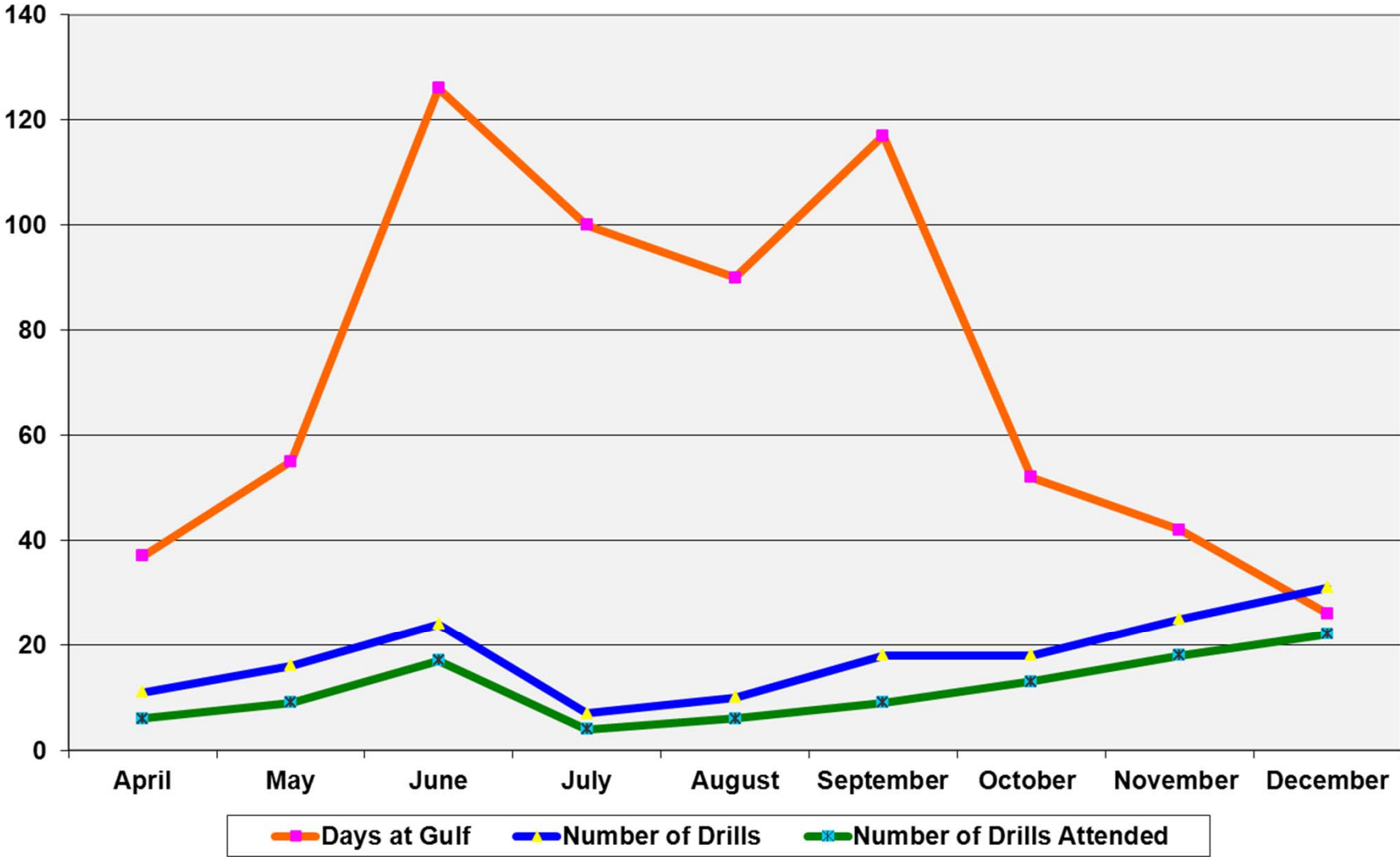
# OSPR Hours

	FACILITY	FACILITY	VESSEL
	Equipment Deployment	Table Top	Table Top
2009	271	1,184	169
2010	243	993	415
2011	326	1,774	1,340

## OSPR HOURS



# DRILLS ATTENDED AND DAYS OF GULF DEPLOYMENT



# Calculating a baseline

## Determining time period:

- Prior to implementation of regulations
- Comparable time span
- Comparable drill scheduling pattern

## Calculation:

- $(\text{FY 2006-2007} + \text{FY 2007-2008})/2$



# Calculating a baseline

## Calculation:

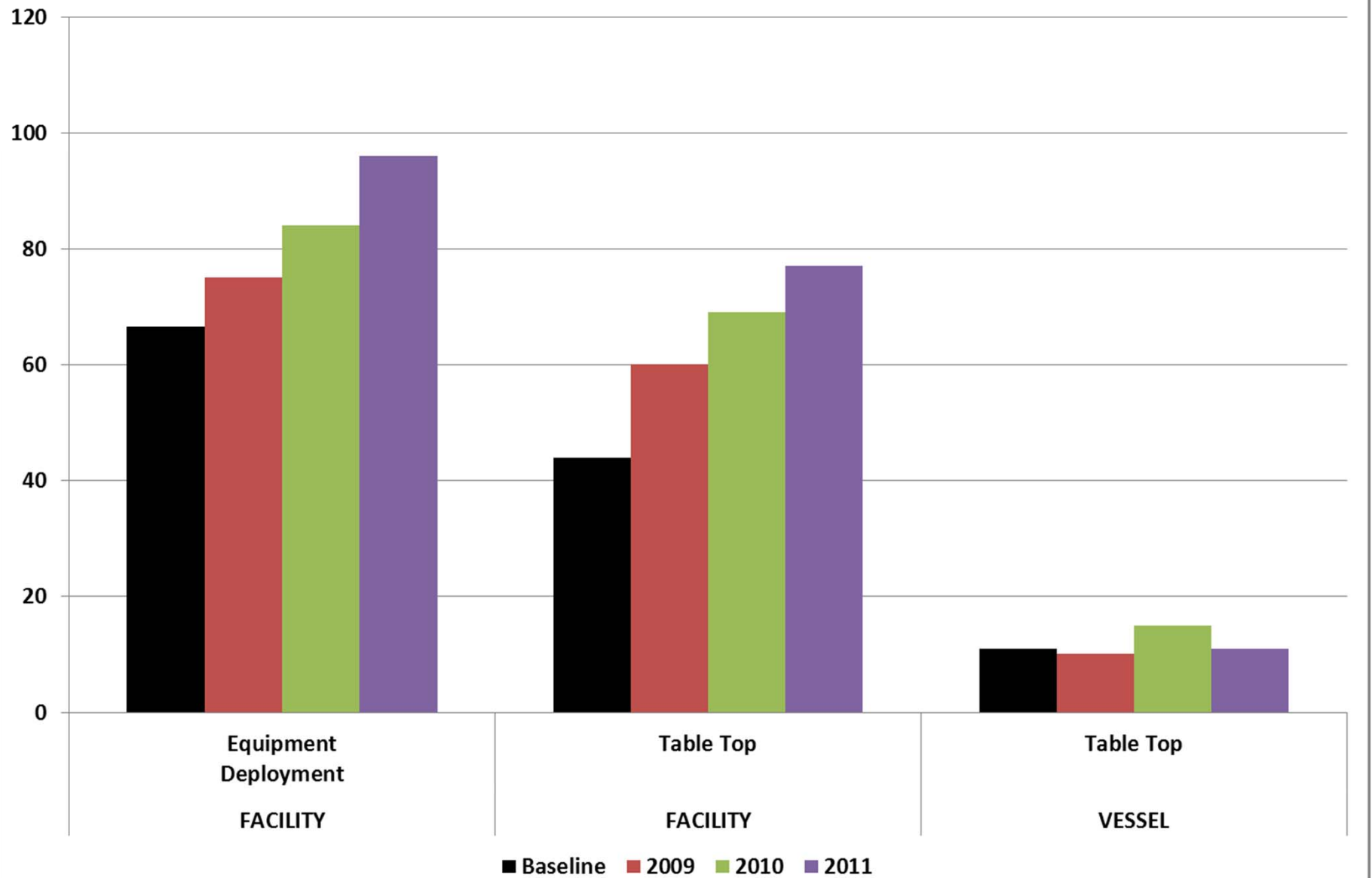
$$(FY\ 2006-2007 + FY\ 2007-2008)/2$$

## Example:

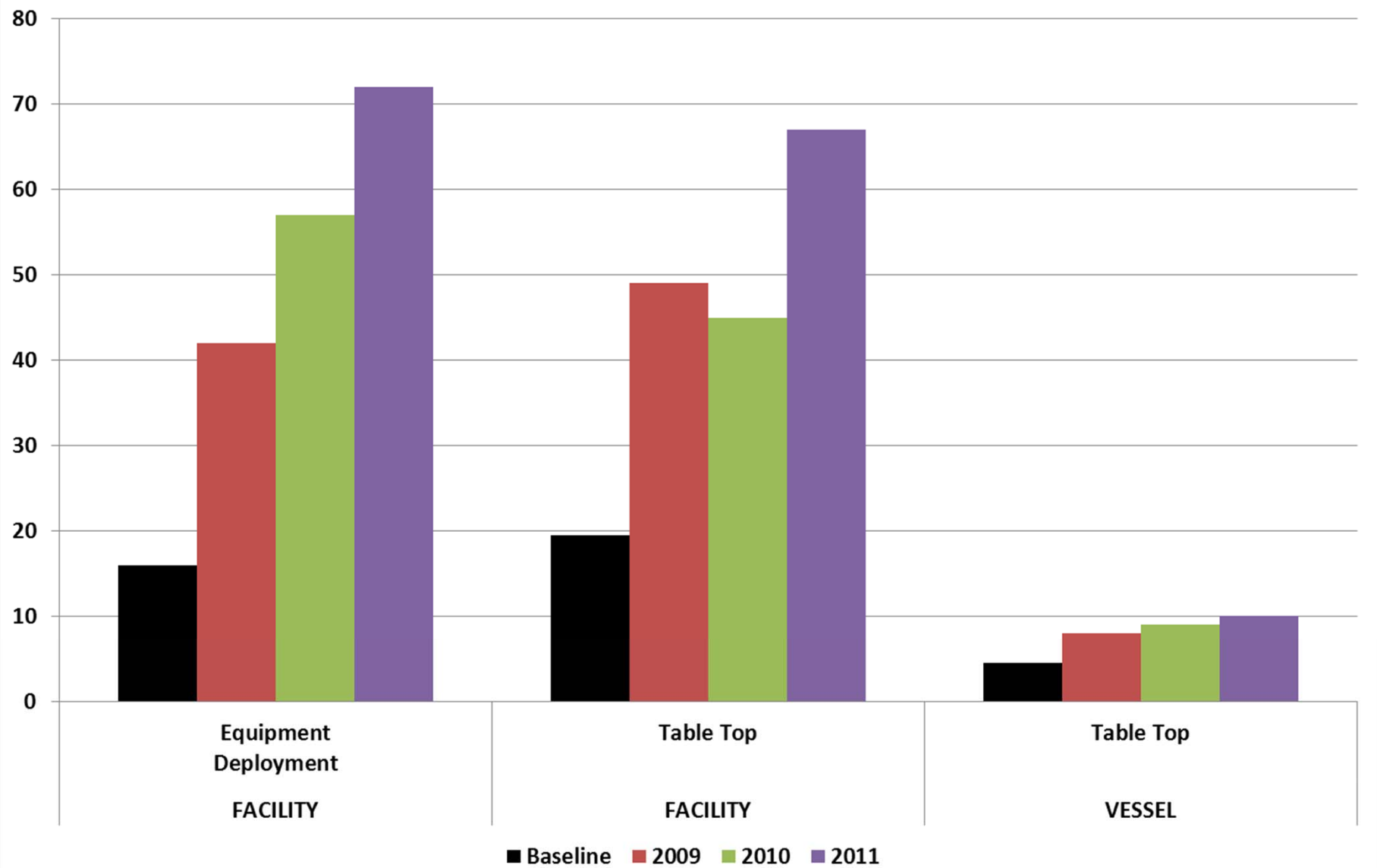
Facility equipment deployment drills

$$(64 + 69)/2 = 133/2 = 66.5$$

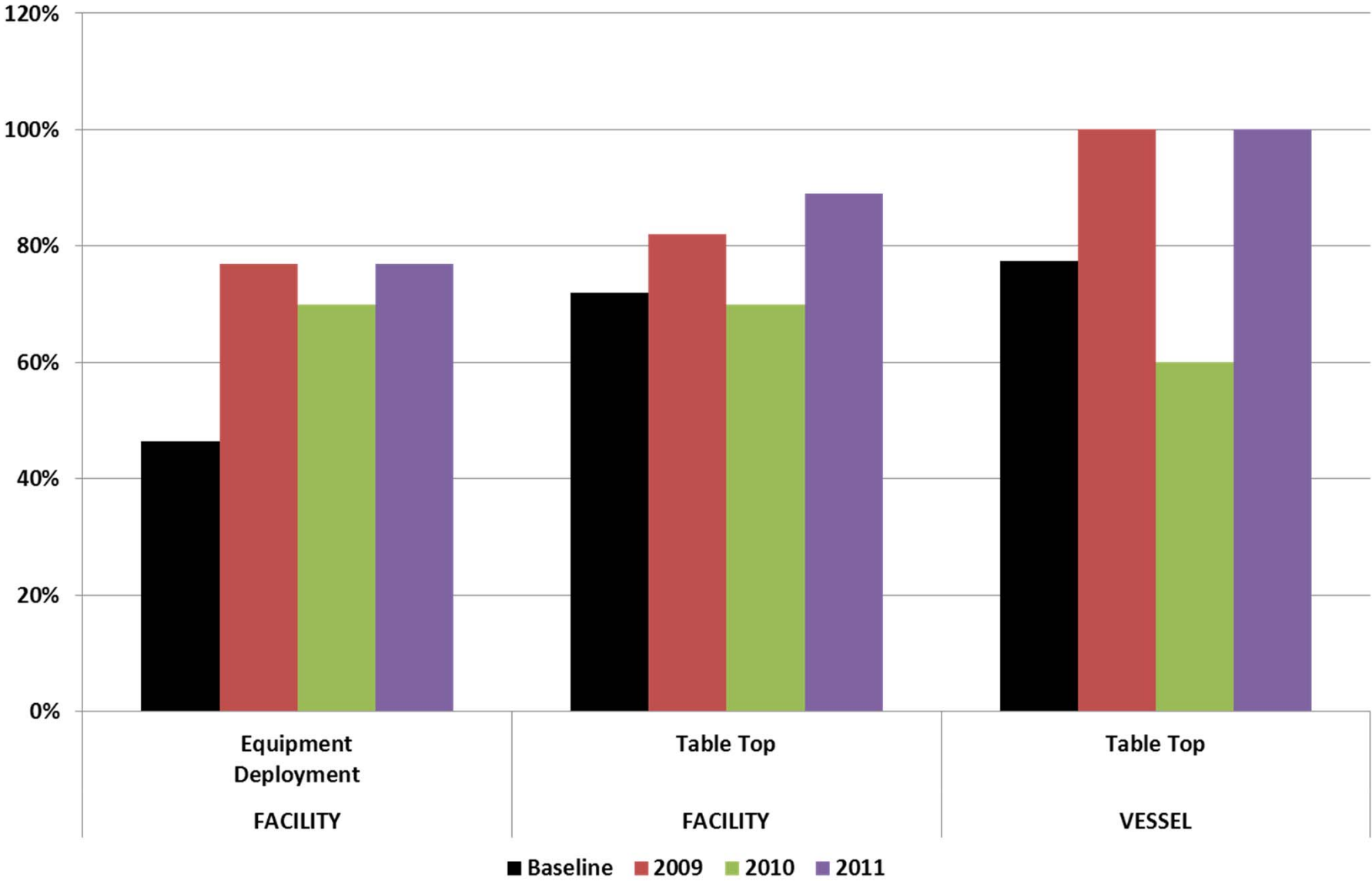
## PROGRAM ACHIEVEMENT: DRILLS



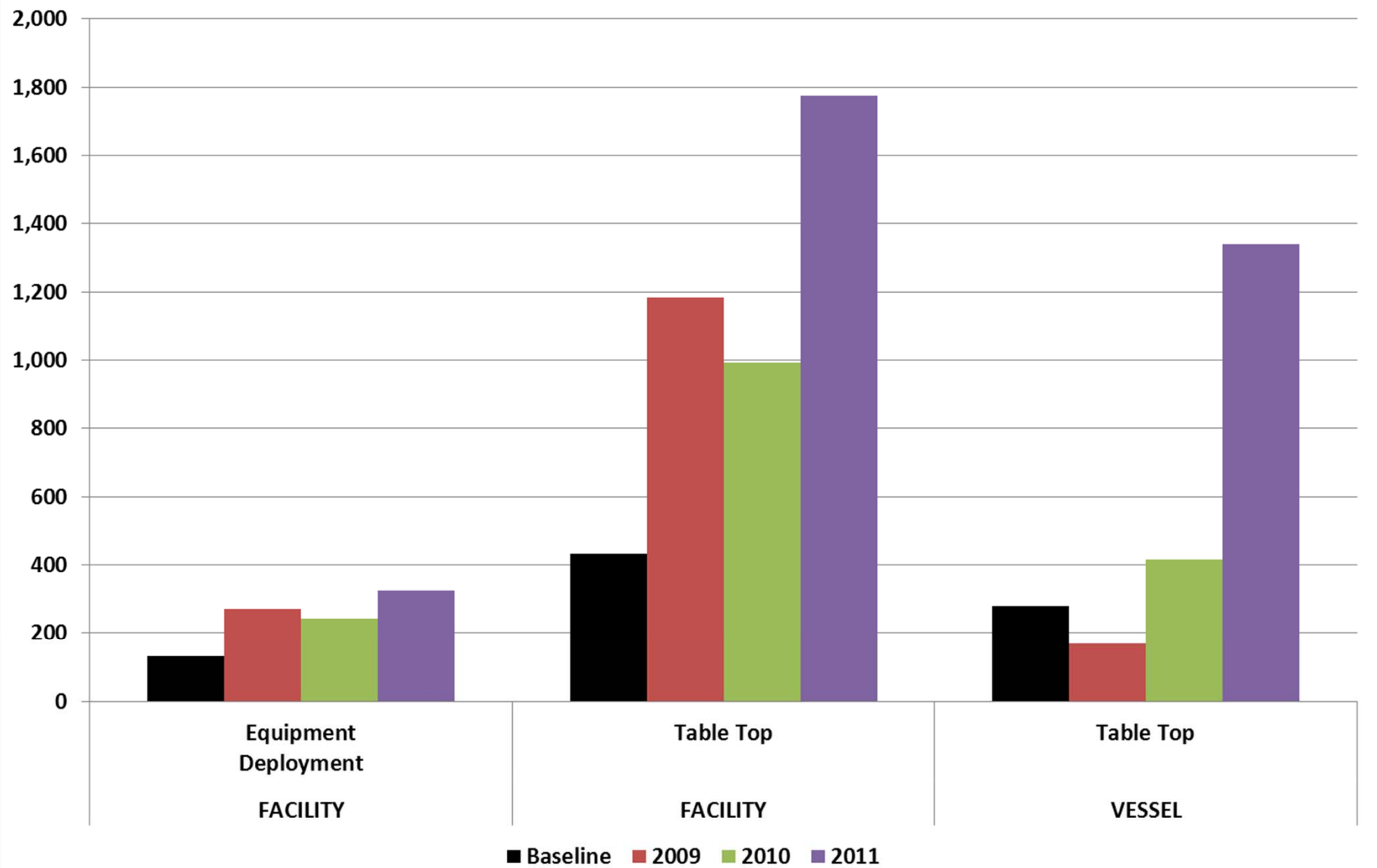
## PROGRAM ACHIEVEMENT: DRILLS ATTENDED



**PROGRAM ACHIEVEMENT:  
PERCENT ATTENDED**



## PROGRAM ACHIEVEMENT: HOURS



# Performance summary

**General increases in all categories, except:**

- **Declines in:**

- Percent of drills attended during Gulf deployment and
- Percent of facility table tops attended during Gulf deployment

- **Uneven increases in:**

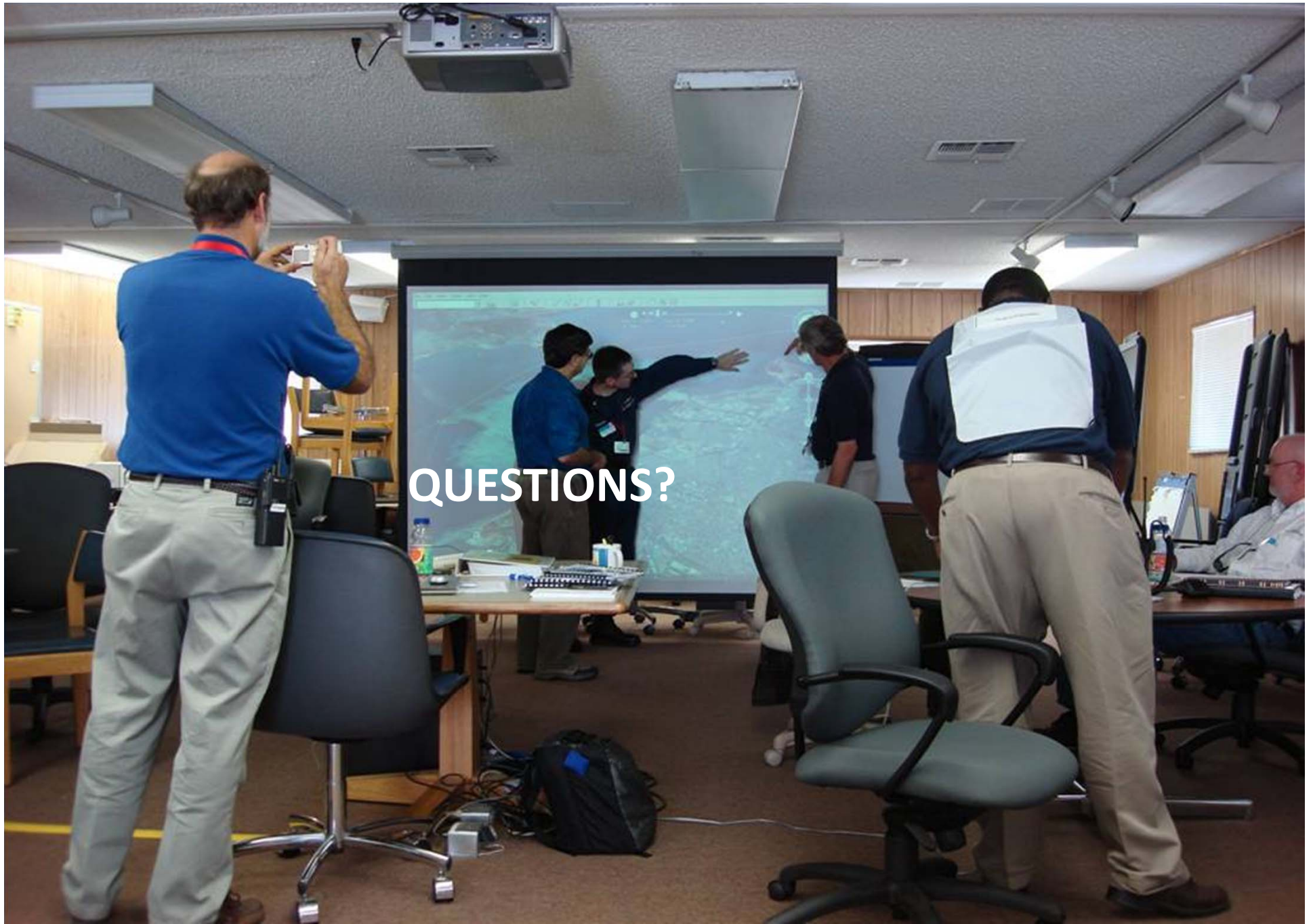
- Hours of FRT attendance during Gulf deployment and years of more vessel table tops

To get more information:



<http://www.dfg.ca.gov/ospr/>  
<http://www.dfg.ca.gov/ospr/calendars.aspx>  
[osprdrills@ospr.dfg.ca.gov](mailto:osprdrills@ospr.dfg.ca.gov)  
[mroskey@ospr.dfg.ca.gov](mailto:mroskey@ospr.dfg.ca.gov)





QUESTIONS?