

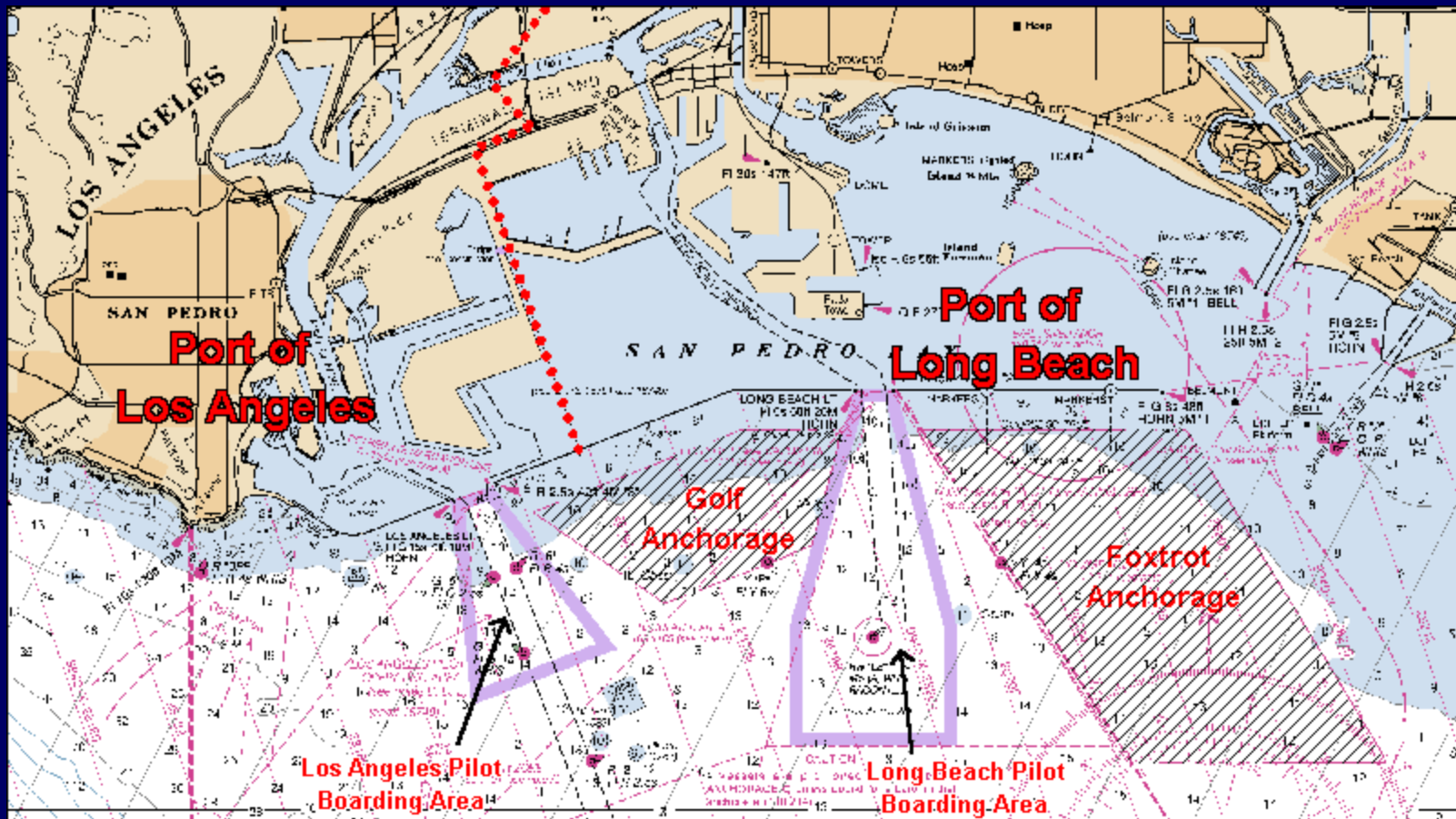
THE ROLE OF VESSEL TRAFFIC SERVICES IN HOMELAND DEFENSE



Topics of Discussion

- Background
- Pre-9/11 Actions
- Immediate & Post 9/11 Actions
- The New Normal

Background



Los Angeles –Long Beach Port Complex

The Nation's Largest Transport Hub

- Largest US Port.
- Over 200 Billion Annual Trade.
- Over 2 Million Jobs Nationwide.
- 10 Million TEU. (20ft containers)

Los Angeles-Long Beach Port Complex (cont.)

- World's 3rd largest container port.
- 43 % of Nation's containerized cargo.
- 1 Million Cruise Ship passengers, ½ mil autos and over 50% of California's oil.

A “Typical” Day at Los Angeles-Long Beach Seaport...



- 1st quarter of calendar year 2002 figures
- 15 Vessels
- 8,093 Containers
- \$350 mil. in value
- \$12 million duty collected
- 2,177 Passengers/crew

VTs LA-LB

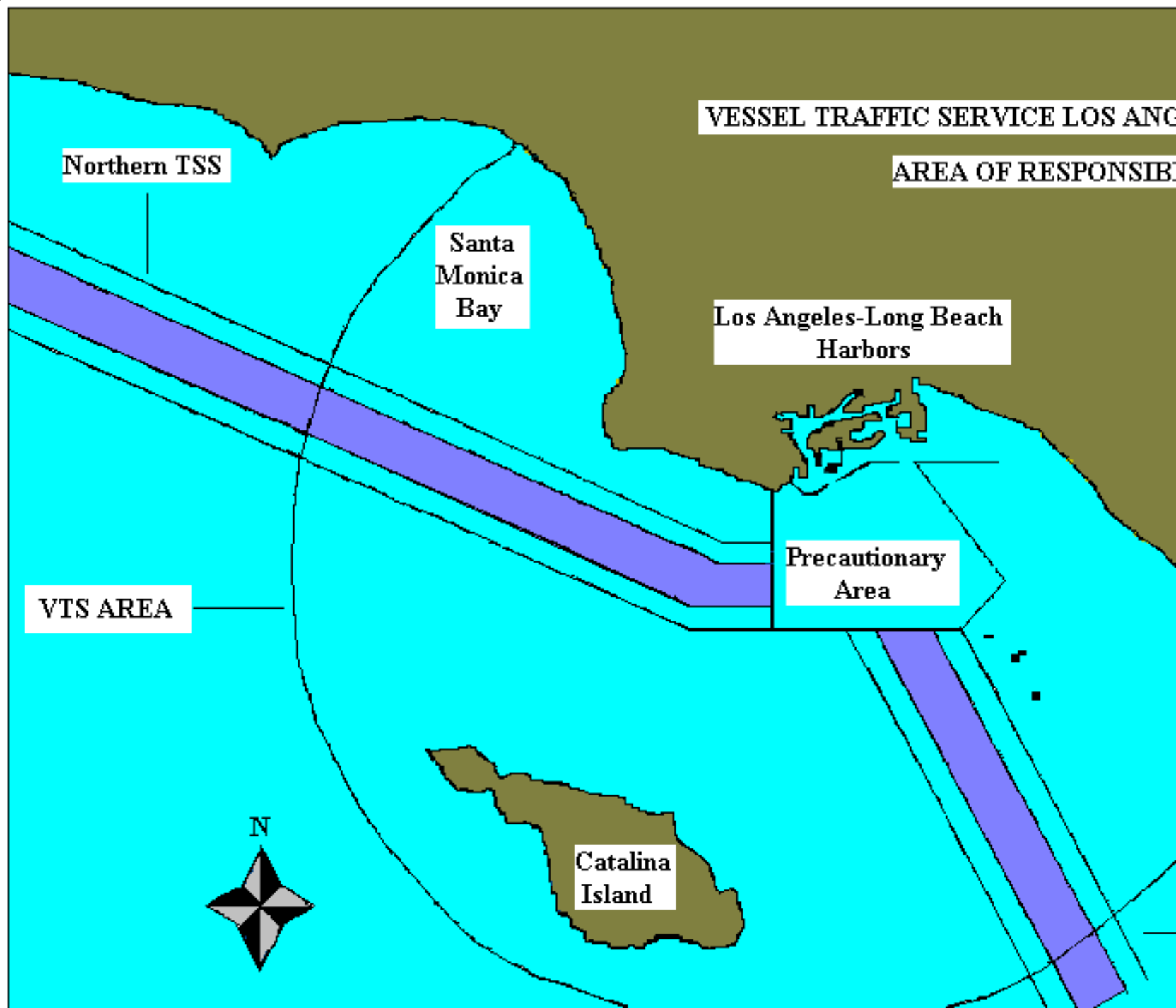


Marine Exchange, USCG Jointly run VTS LA/LB

- Established 1 March 1994.
- Southern California's Primary Source of Ship Information.
- Responsible for Overall Coordination of Safety Offshore.
- Los Angeles, Long Beach Pilots Participate. (VTMS)

Marine Exchange Acts as California's Agent

- Under OSPR.
- Primary Mission: Environmental Protection.
- Coast Guard Component Adds Port Security and Law Enforcement.
- 225,000 Successful Covered Transits To Date – Credibility Established.



VTS EQUIPMENT

- VHF (DEDICATED CHANNEL 14)
- SURFACE SEARCH RADAR (4)
- KNCS 5060 VESSEL TRAFFIC MANAGEMENT EQUIPMENT
- VHF-DP (DOPPLER)
- AIS TRANSPONDERS
- MARIS SHIP INFO SYSTEM

9/11 Response



Immediate Response

- COTP Control
- Active Control of Vessel Traffic.
- Clearance For All Vessels.
- Town Meeting.
- Multi-Agency Boardings.

Multi-agency Support



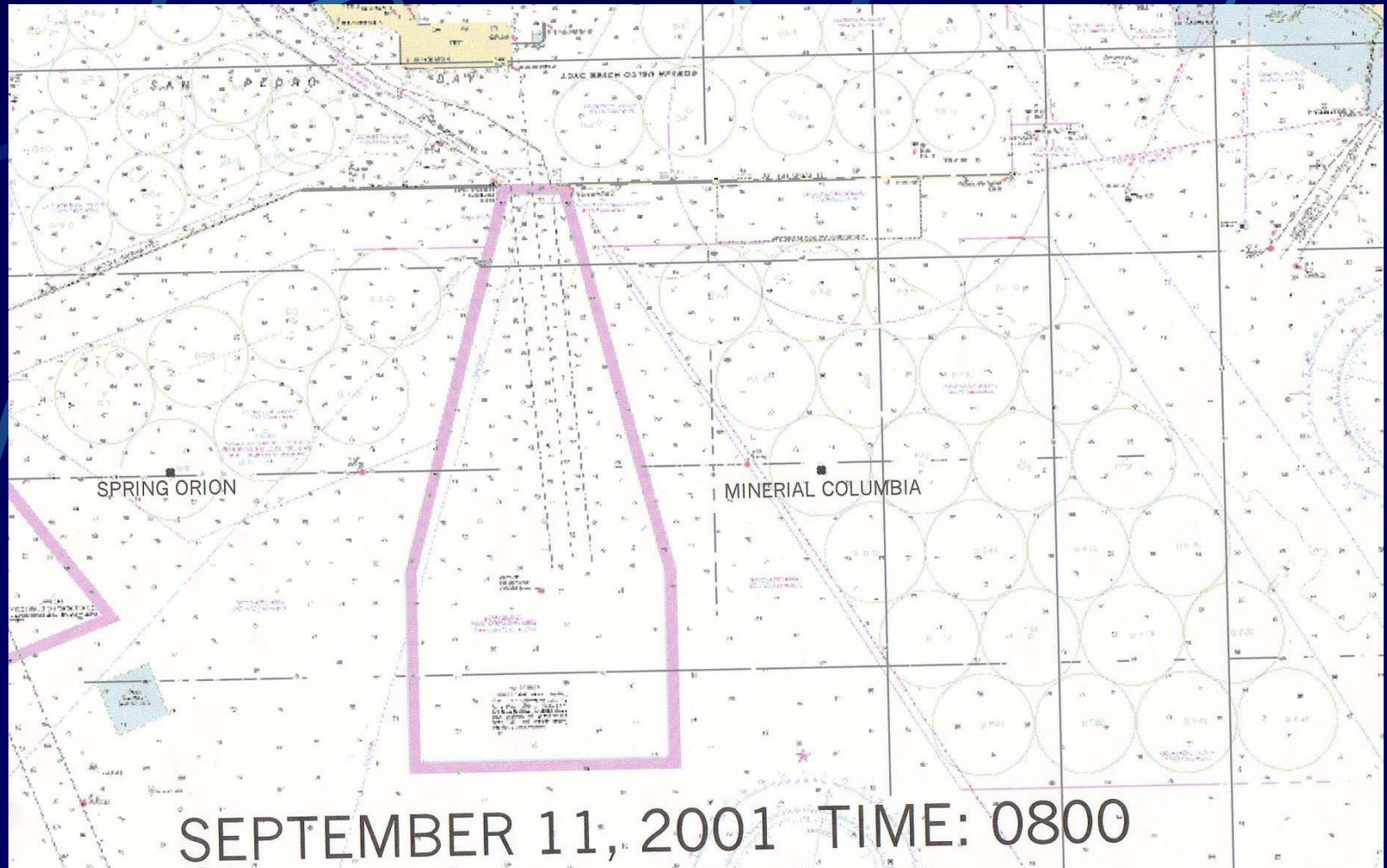
Immigration and Naturalization
Service



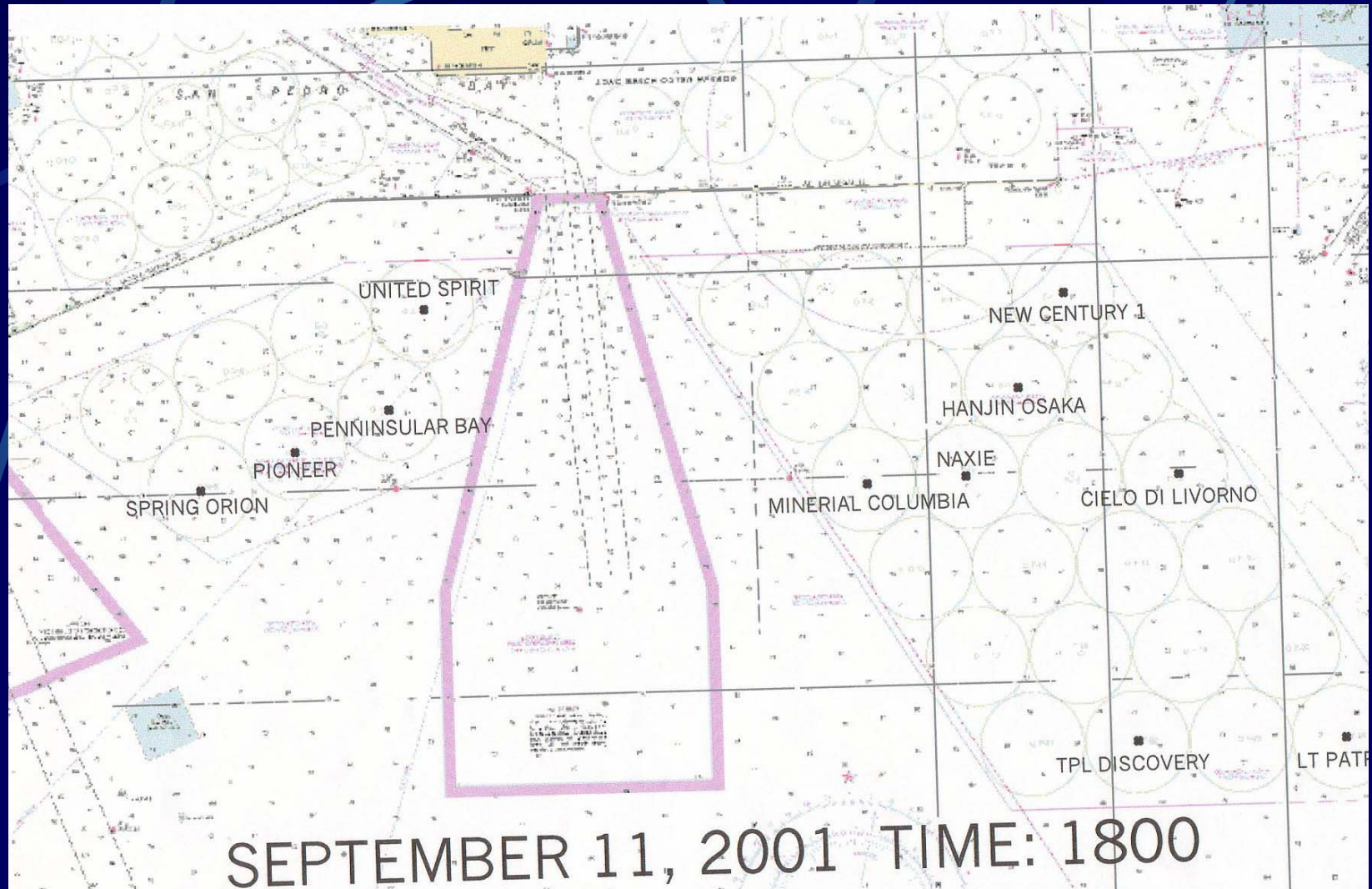
*Long Beach
Police Department*

- All deep draft vessels were boarded by multi-agency teams following 11 September.
- Multi-agency teams currently board only high interest vessels.
- Multi-agency vessel patrols.
- Some high interest vessels boarded at 25 mi range.

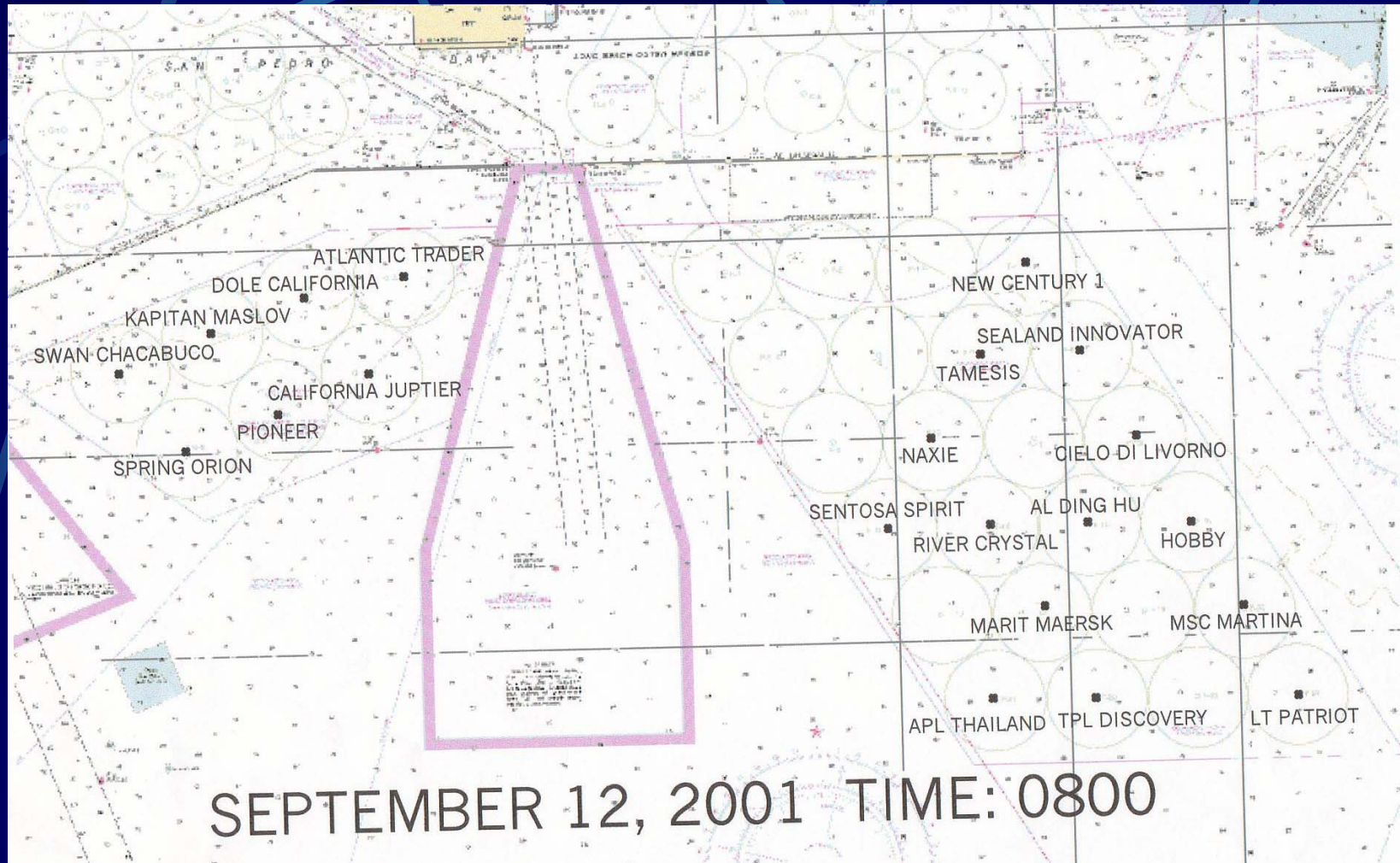
World Trade Center plus 2 hours (2)



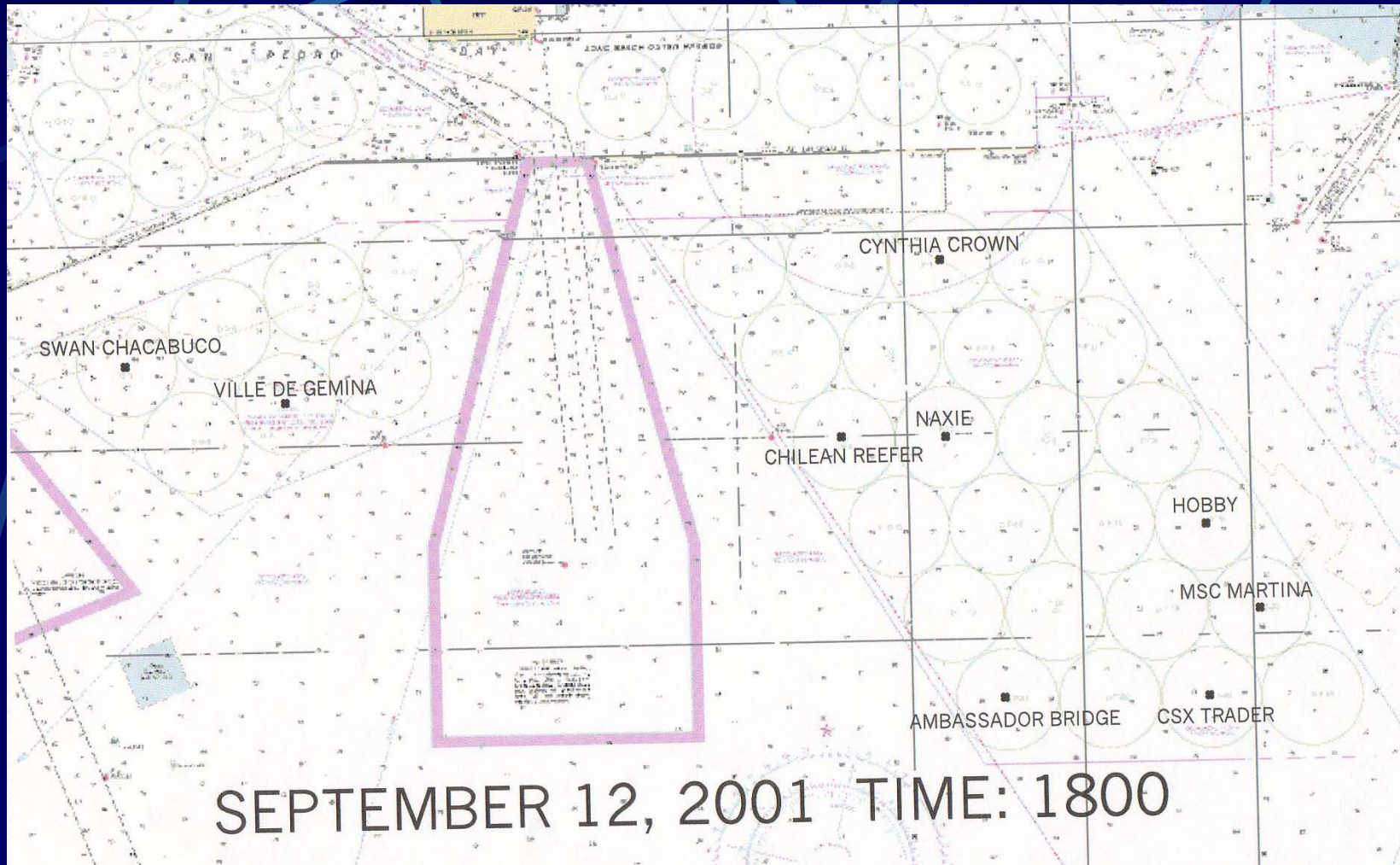
World Trade Center plus 14 hours (11)



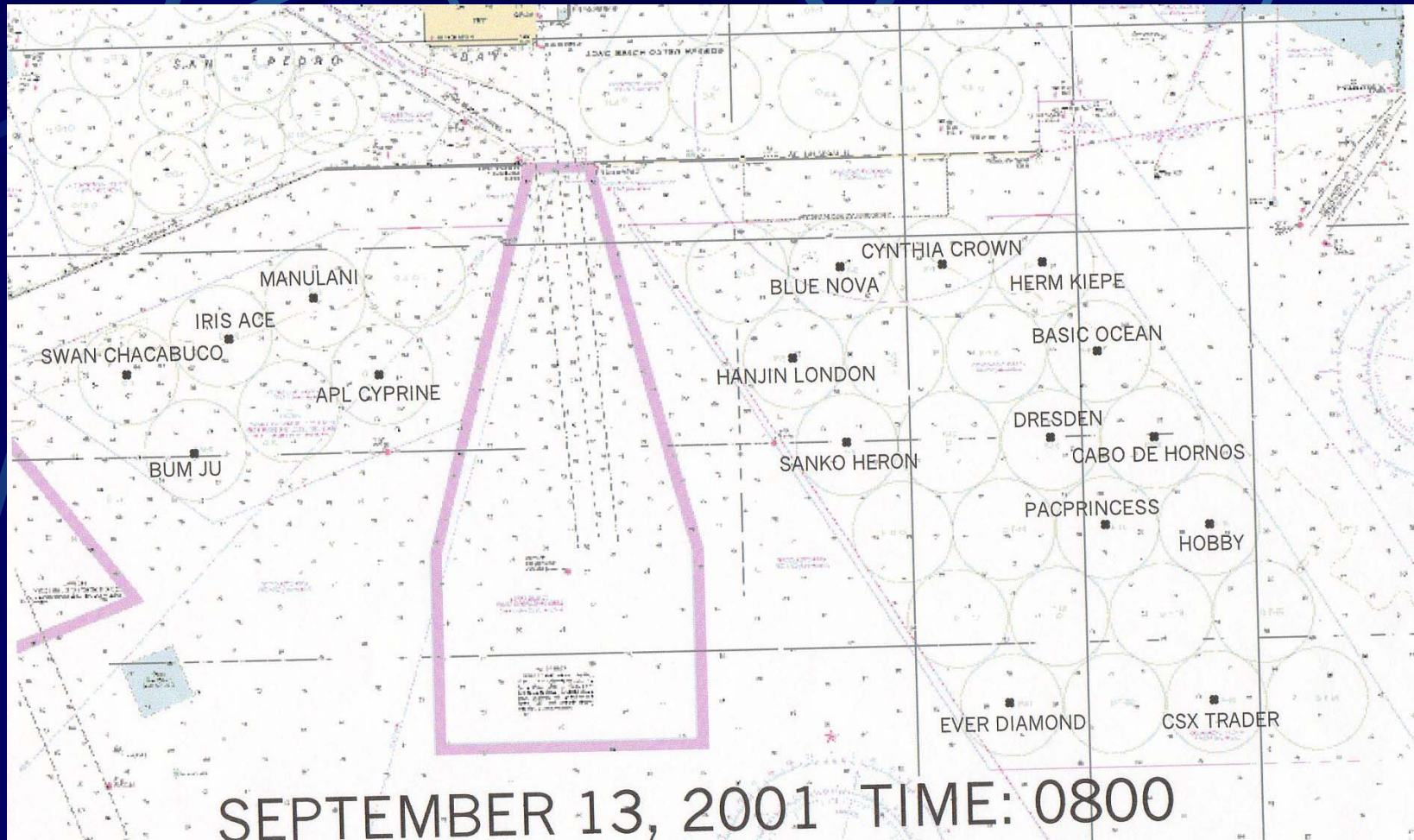
World Trade Center plus 26 hours (21)



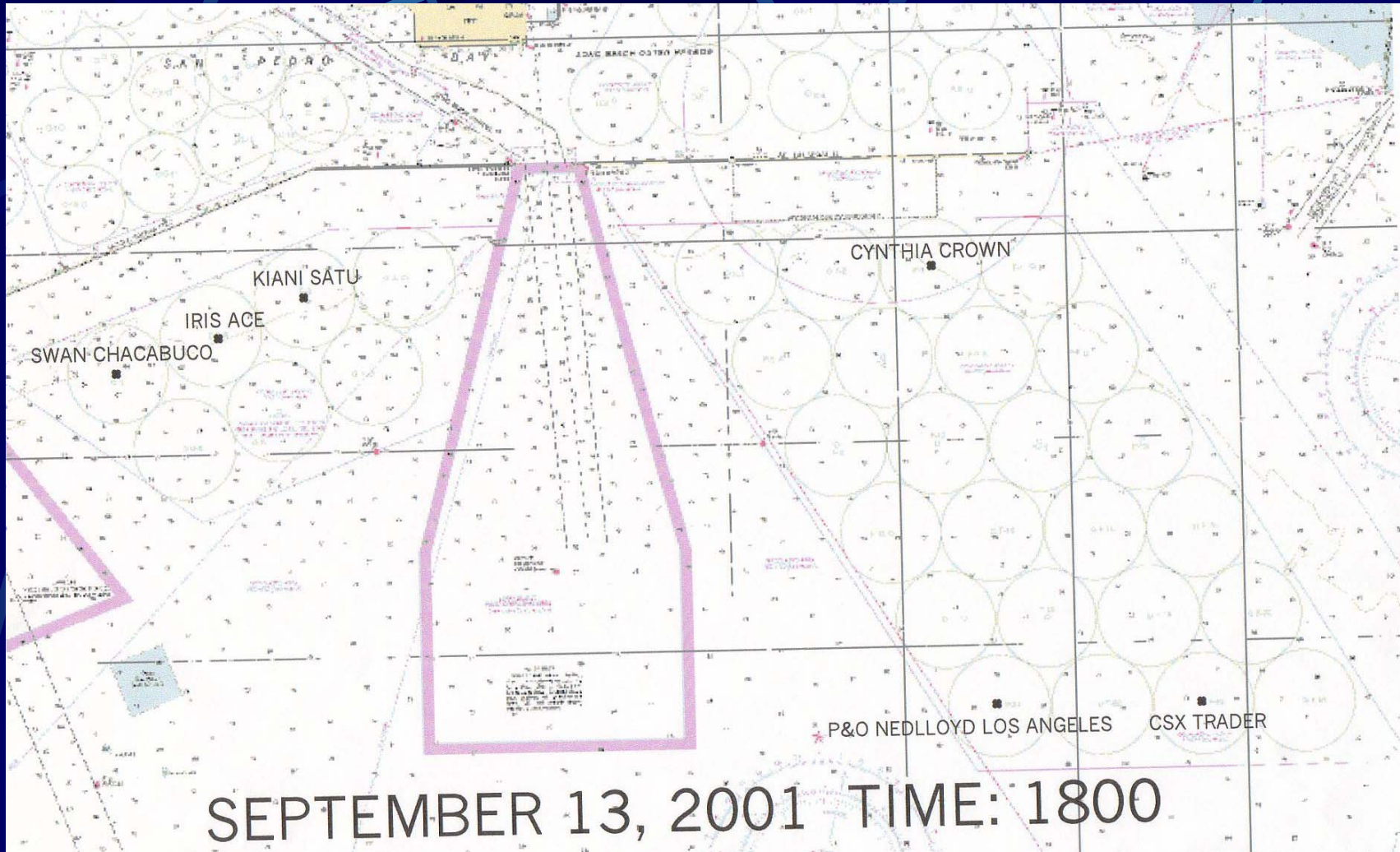
World Trade Center plus 38 hours (9)



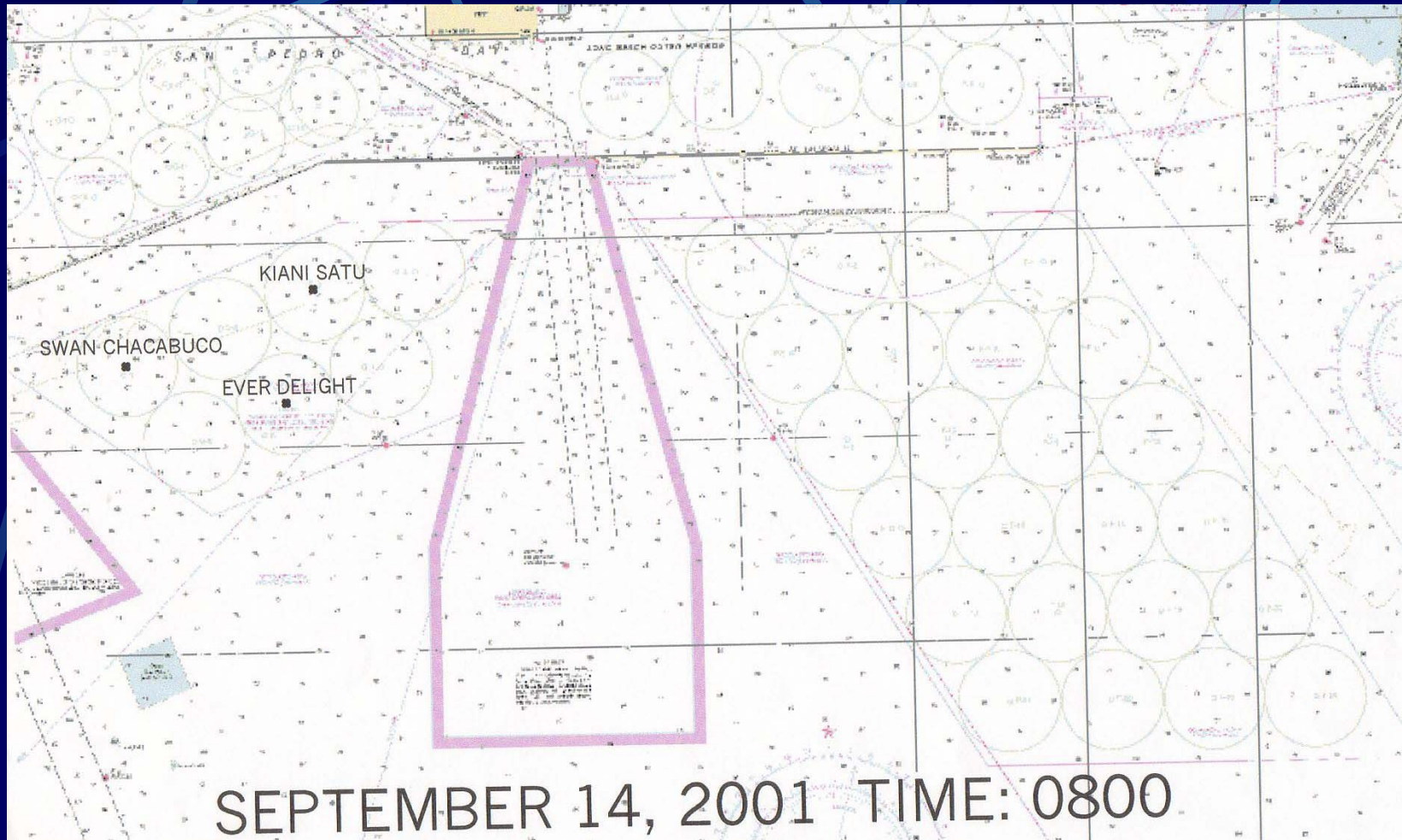
World Trade Center plus 50 hours (17)



World Trade Center plus 62 hours (6)



World Trade Center plus 74 hours (3)



Follow On Actions

- User Group and Town Hall Meetings organized.
- Pilot, Tug Coordination.
- Traffic Status Updated 3X Daily.
(First Month)
- VTC Point of Contact For All Vessel Information.

Security Improvements



Short-term Actions

- Enhanced Boarding and Container Inspection Programs
- Established Sea Marshal program
- Implemented Vessel and Facility Security Standards
- Intel Support
- Equipment Upgrades

The New Normal



Long-term Changes

- Improve info sharing: MISNA, USCG, ONI, etc.
- Leverage Technology : UAIS, PortSource, Radar Integration
- Enhance Vessel Profiling
- Promote Public/Private Partnerships (MISNA/USCG)

How Can These Changes Take Place ?

- Interagency Cooperation
- Community Outreach
- Leveraging Existing Relationships

How Will We Continue to Move Forward ?

- Continue to Meet With Users and Address User Issues
- Use the Structure in Place to Effect Changes
- Maintain a Leadership Role in National Changes

Eternal Vigilance....



The Price of Security