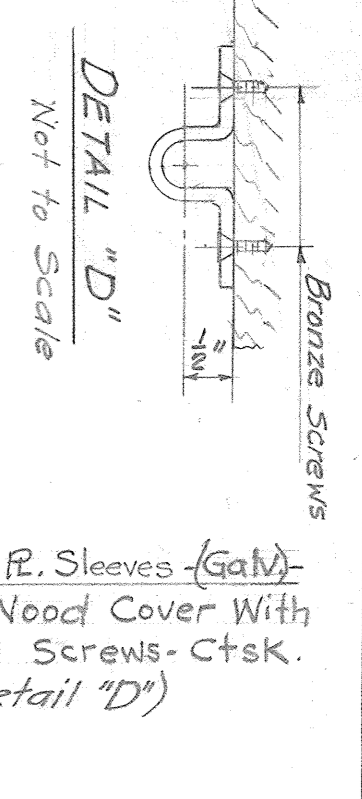
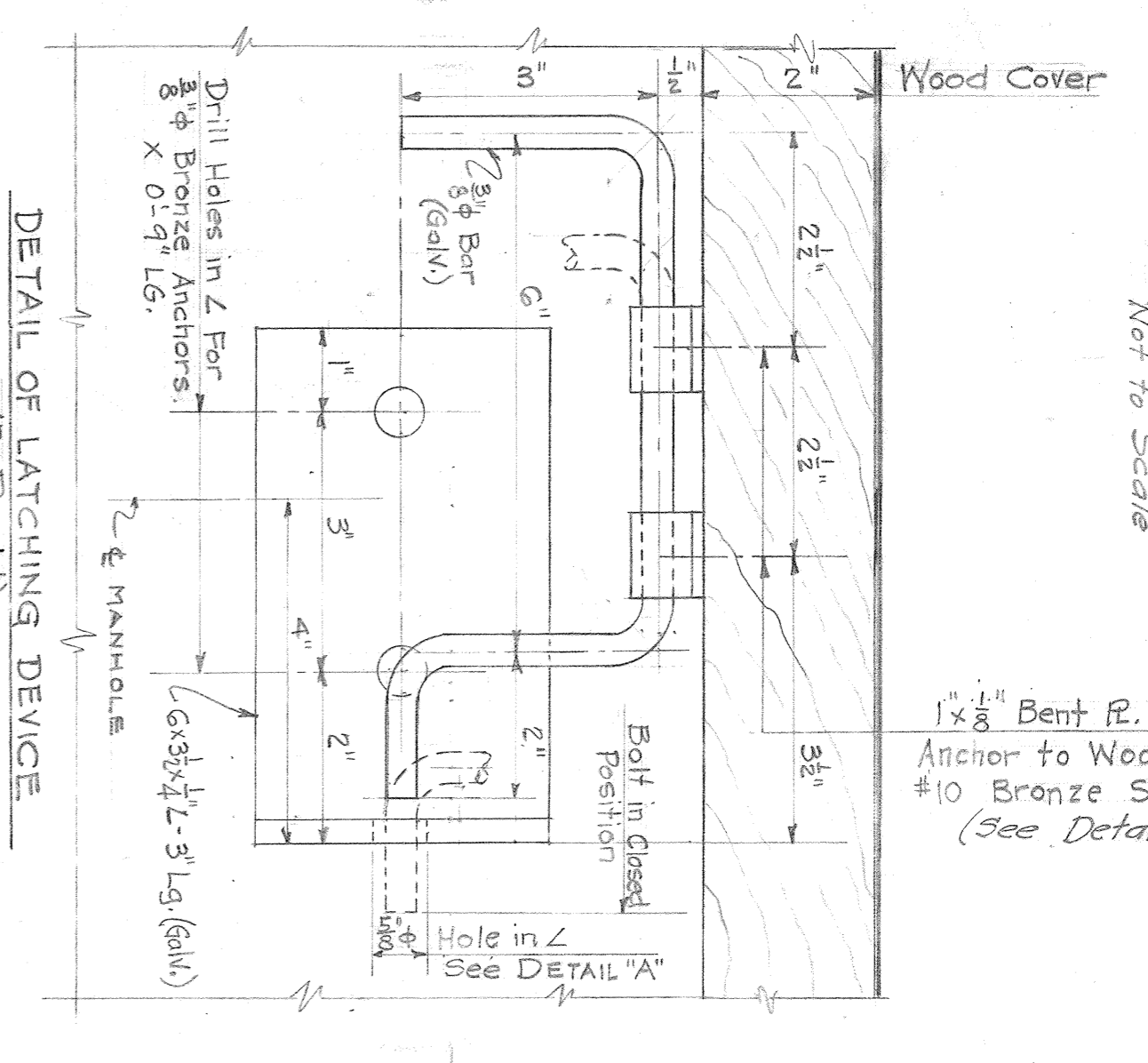


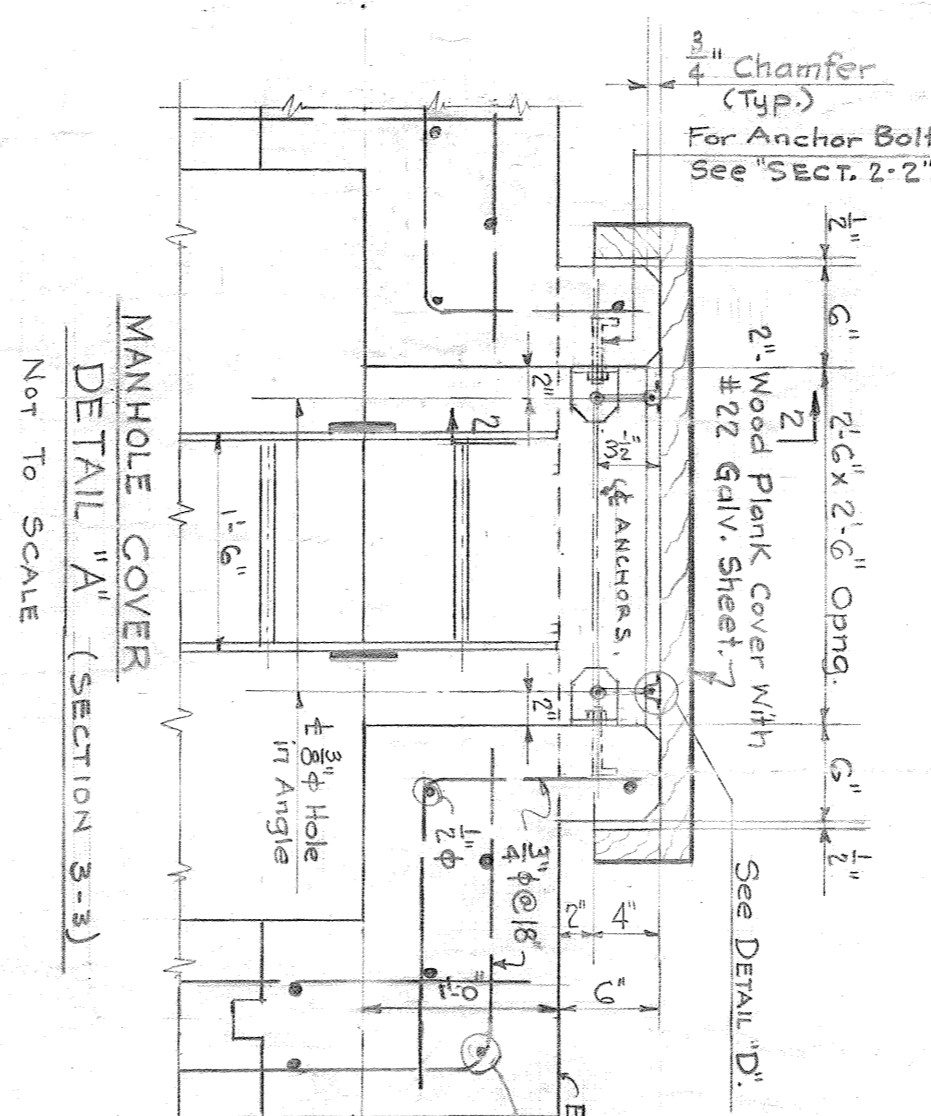
Appendix C Drawing AA 62302-B Underpass at Coordinate
7+00 and State Highway



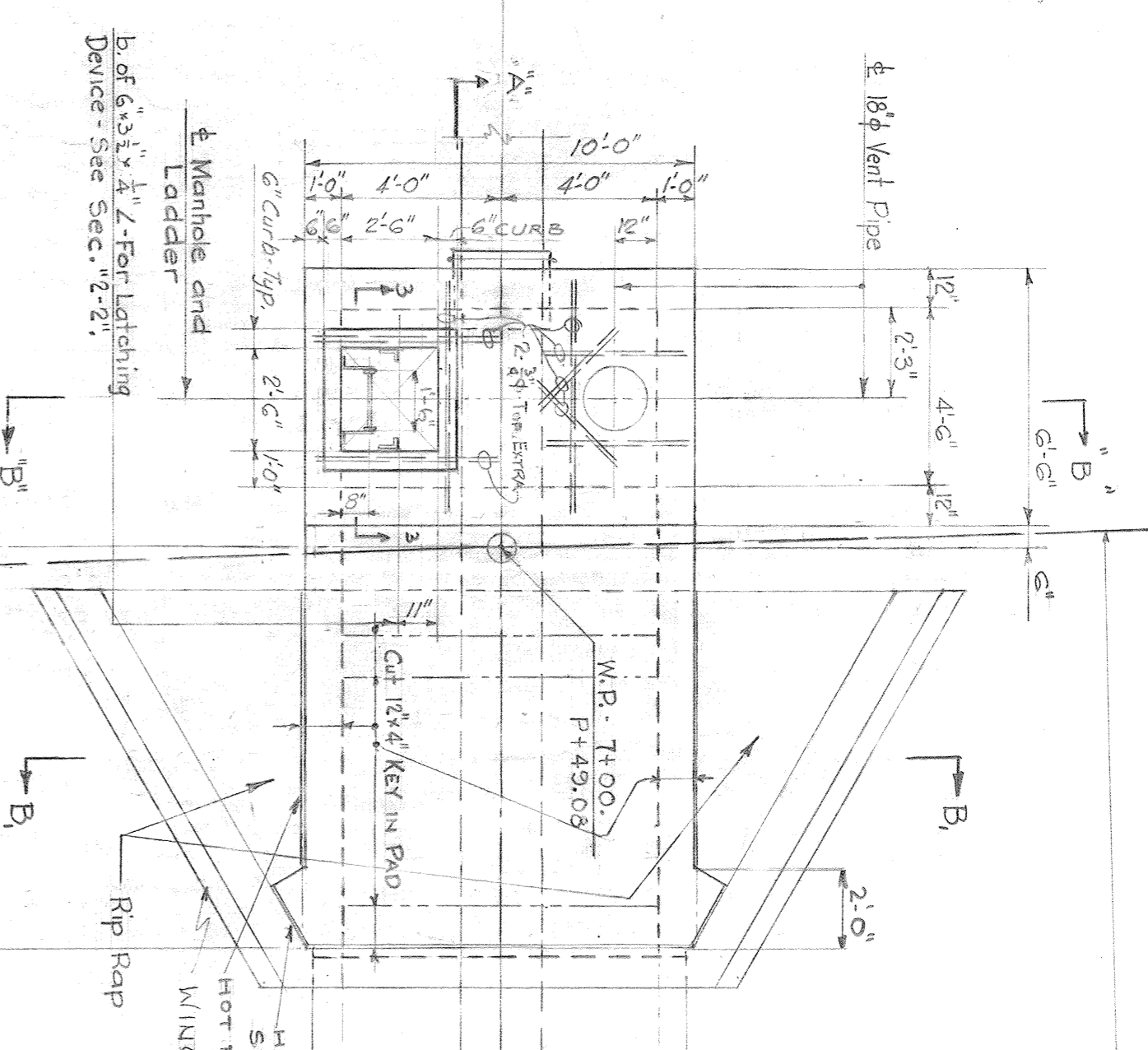
1/2" Bent P.S. Sleeve (Galv.)
Anchor to Wood Cover With
#10 Bronze Screws - Ctsk.
(See Detail 'D')



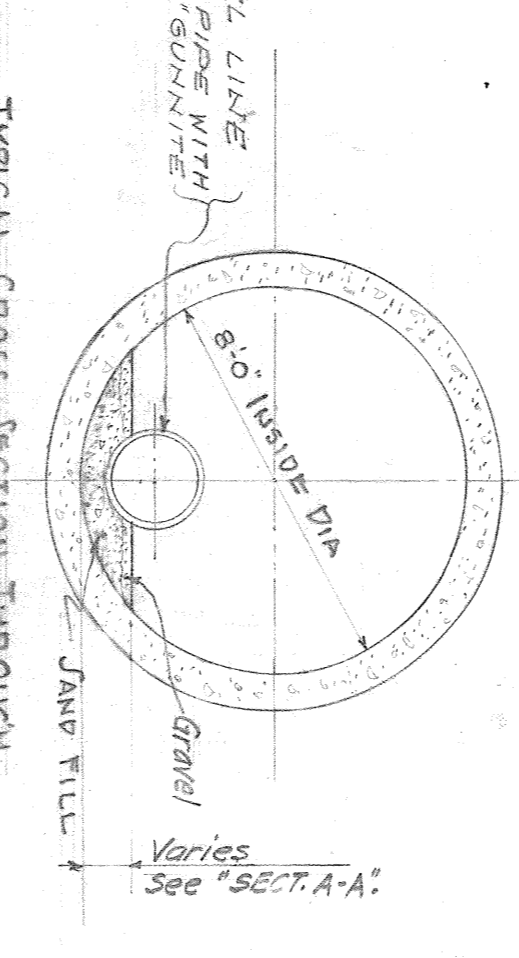
DETAIL OF LATCHING DEVICE
SECTION 2-2
Scale: 1/4"=1'-0"



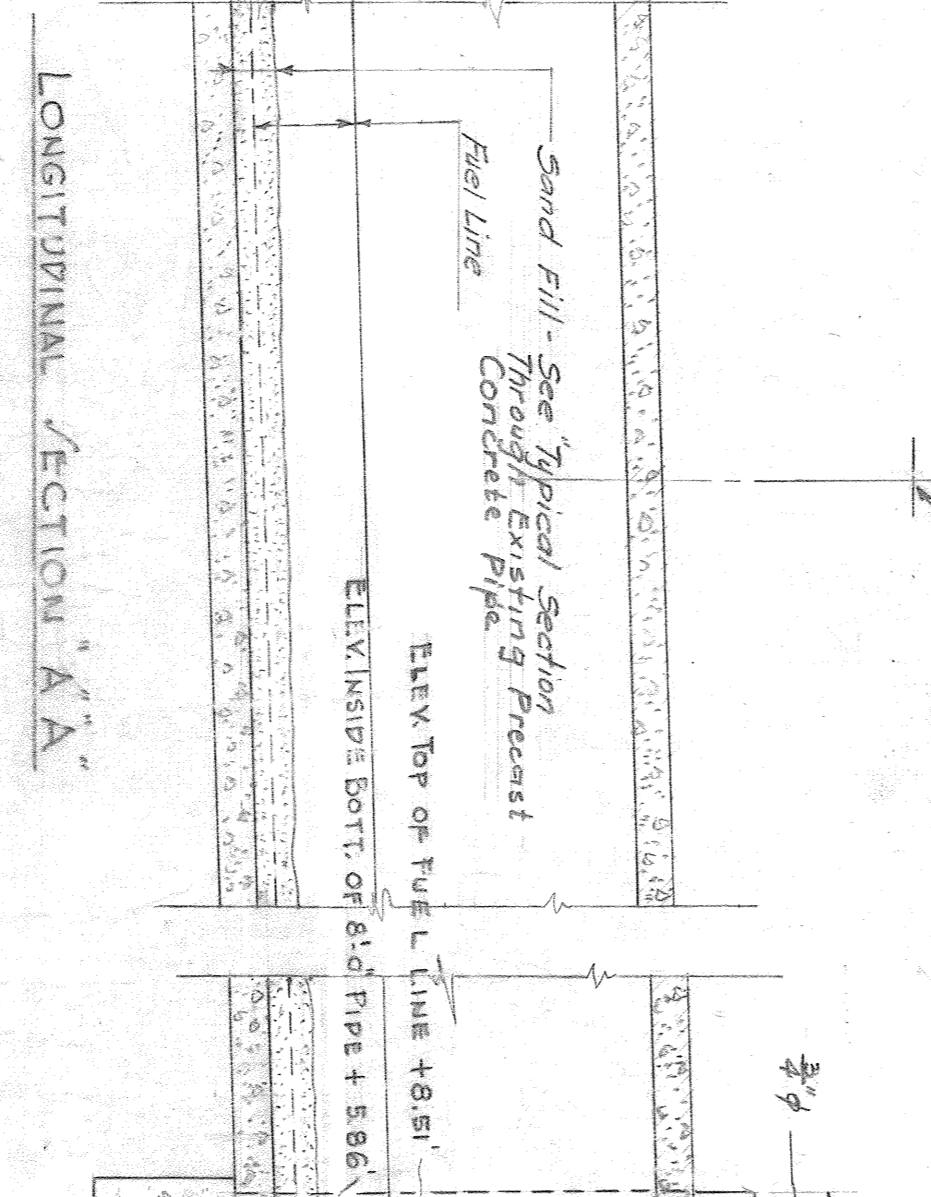
MANHOLE COVER
DETAIL 'A' (SECTION 3-3)
Not to Scale



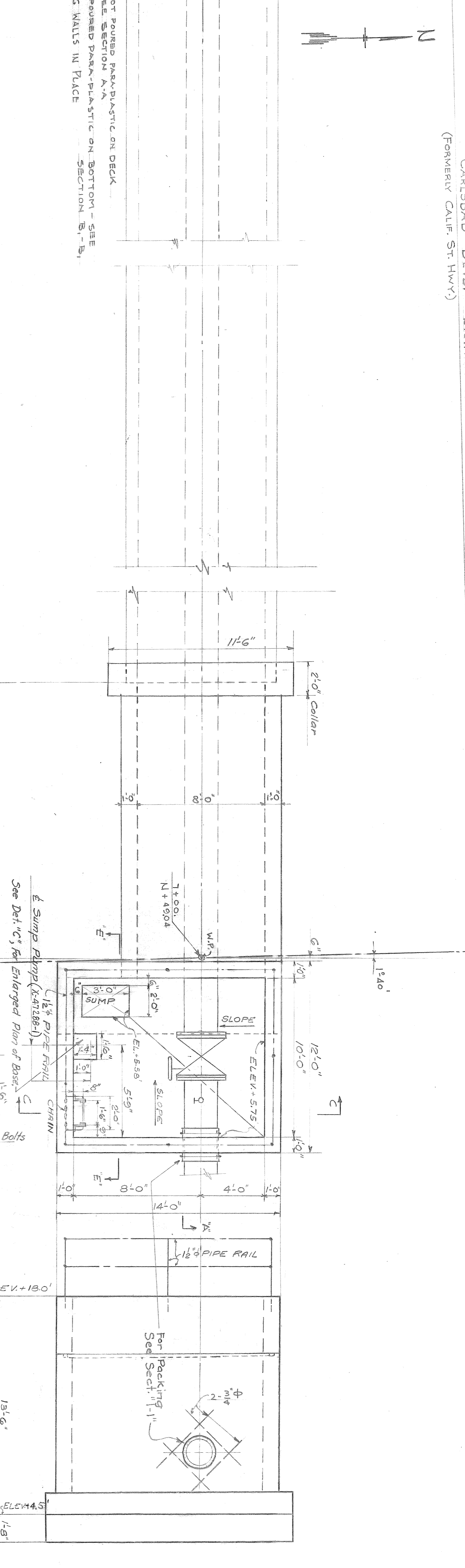
THIS SECTION OF UNDERPASS IN PLACE
PLAN OF UNDERPASS



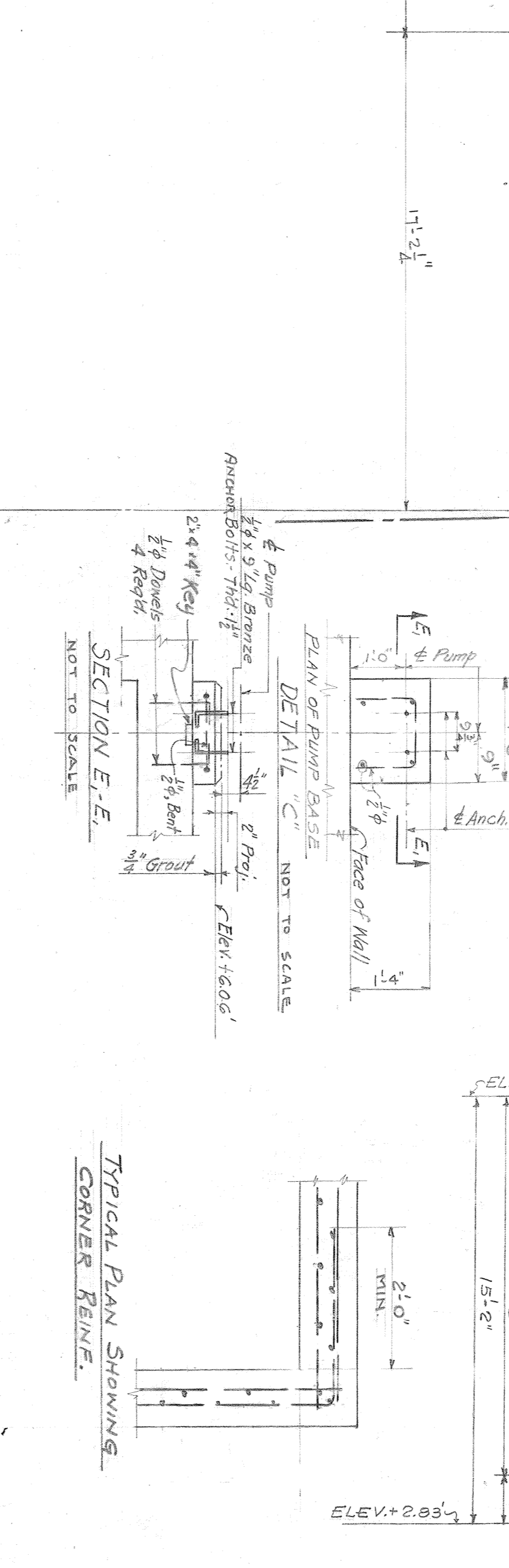
TYPICAL CROSS SECTION THROUGH
EXISTING PRECAST CONCRETE PIPE
ELEVATION AT & ELEVATION +19.01'



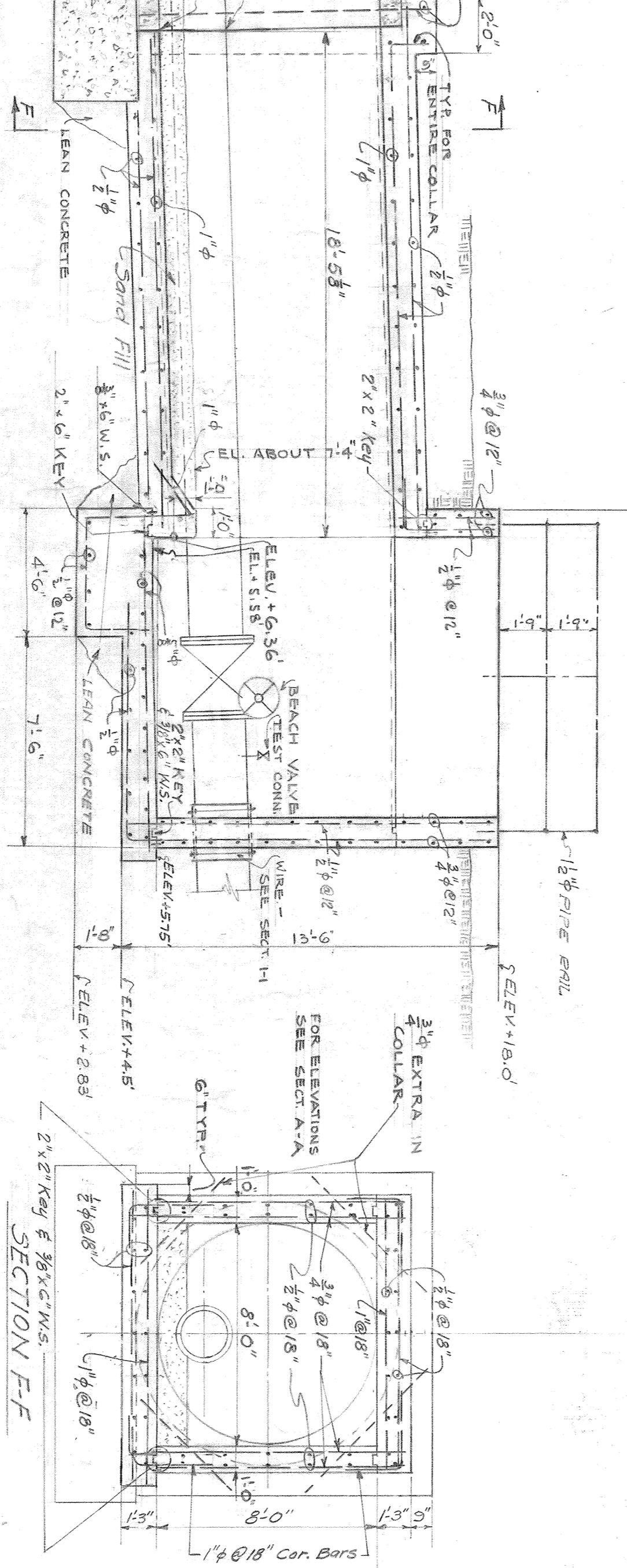
LONGITUDINAL SECTION 'A-A'



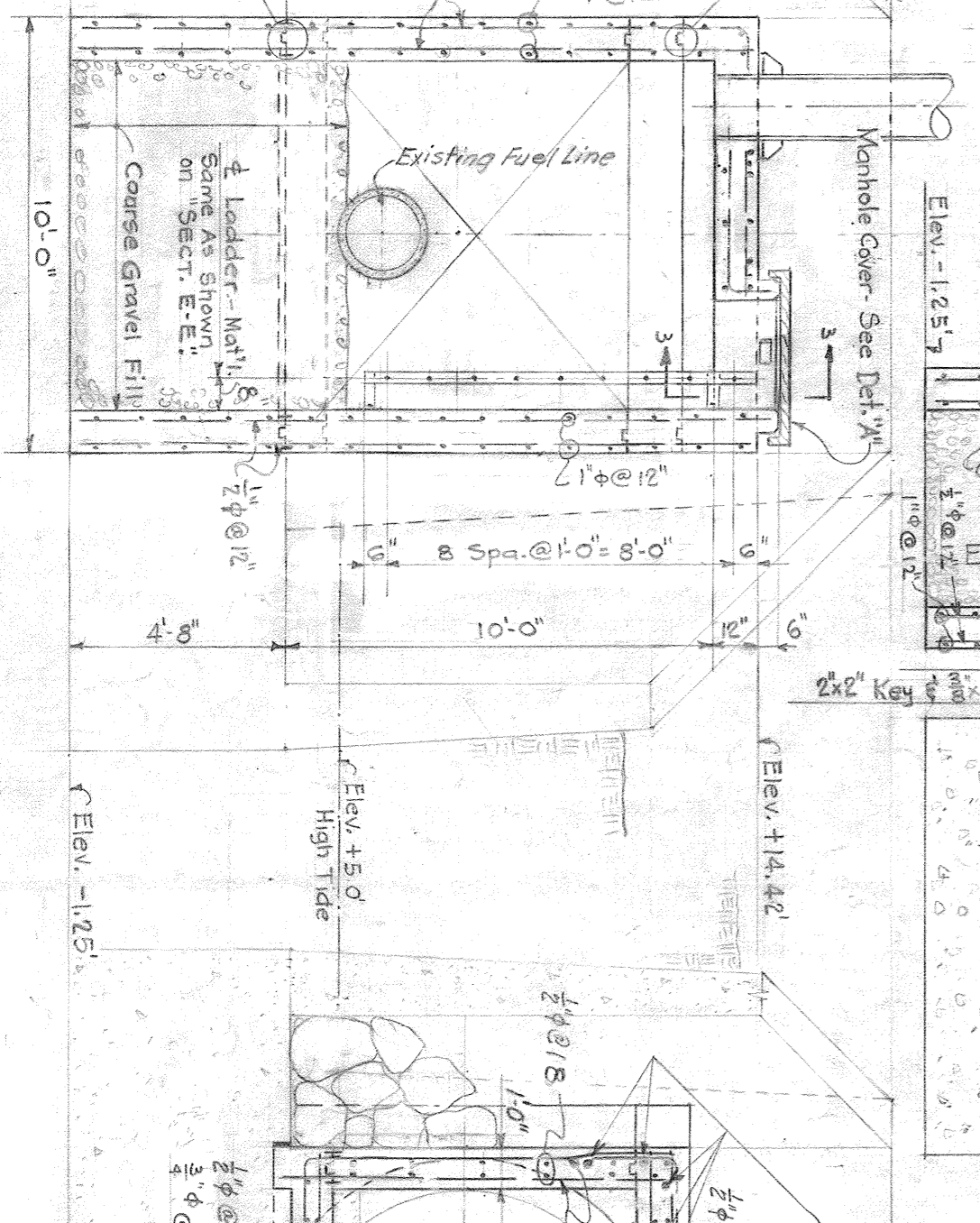
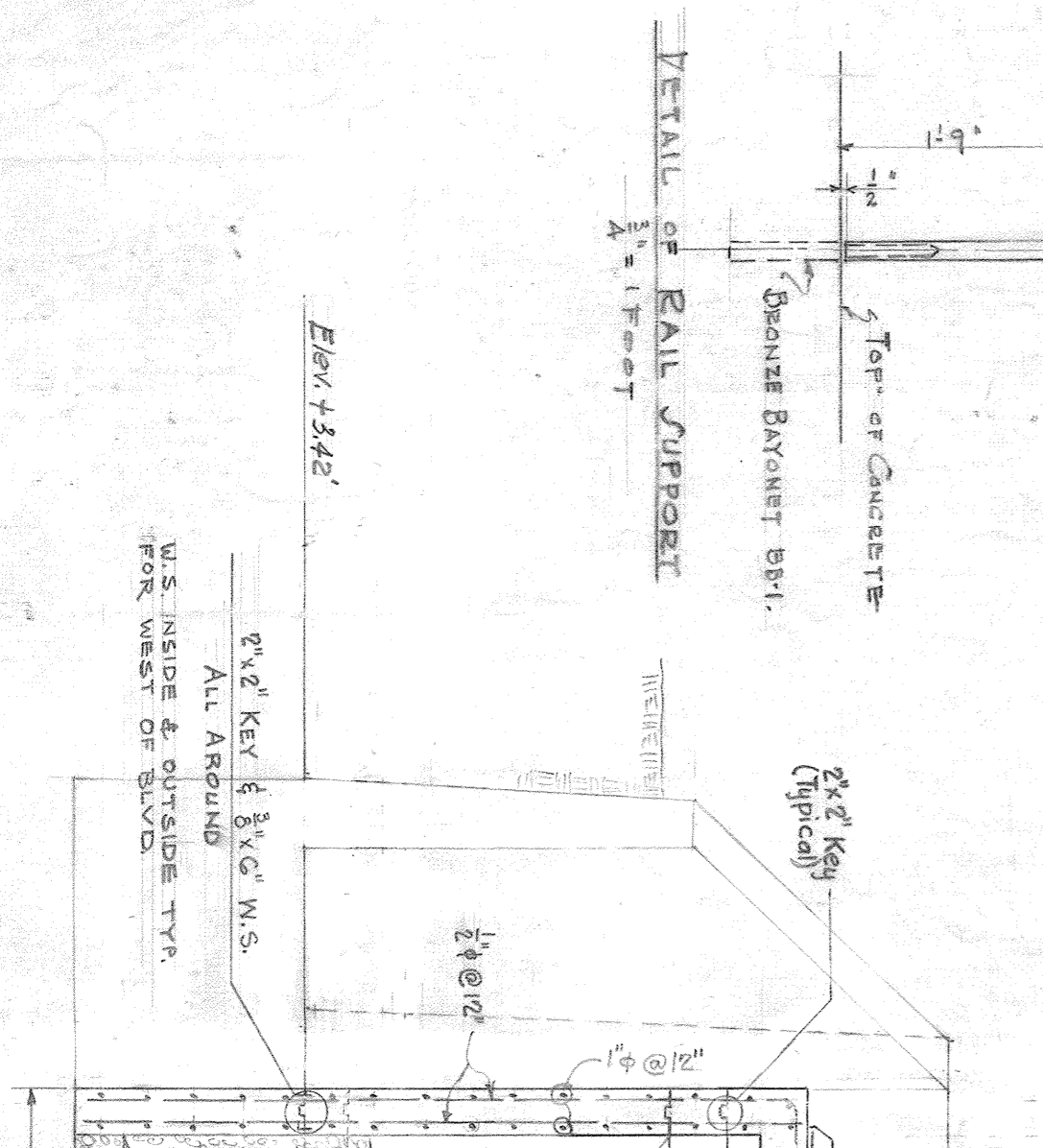
EAST ELEVATION



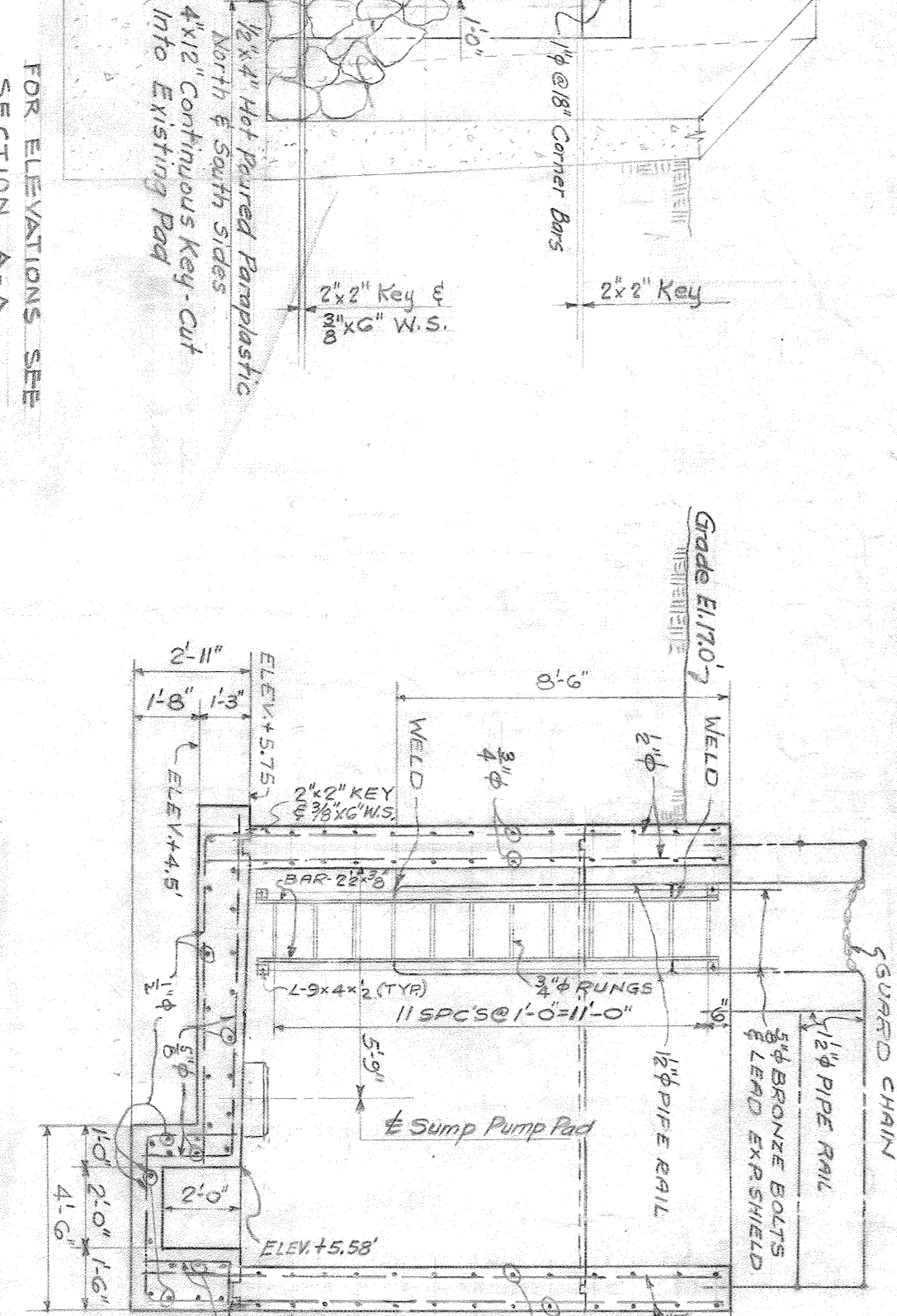
TYPICAL PLAN SHOWING
CORNER REINFORCING



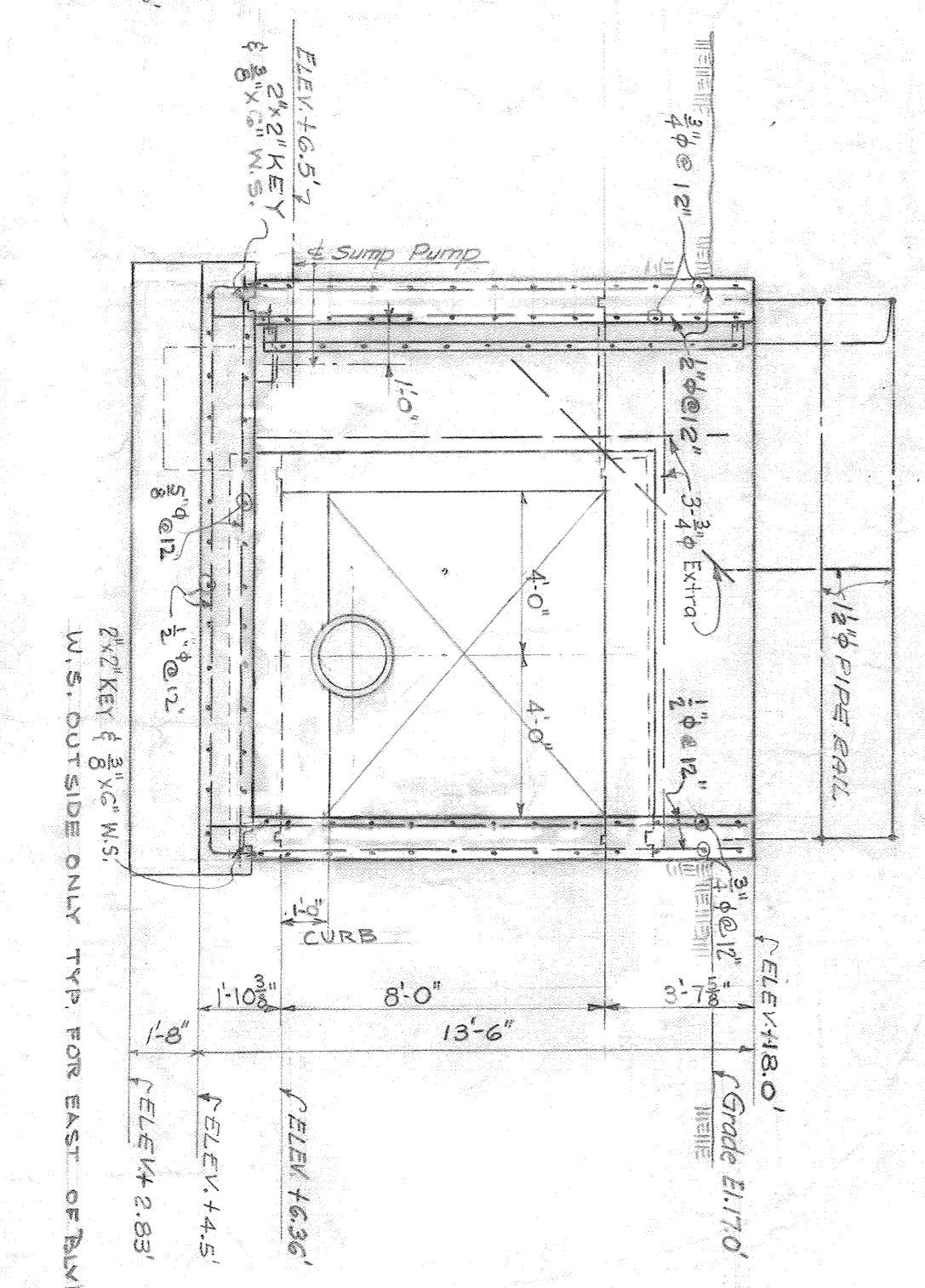
SECTION 'E-E'



SECTION 'B-B'



SECTION 'C-C'



SECTION 'E-E'

NOTE
4-CORNER TO ALL REINFORCING LAPS
ALL BARS 8" DIAMETERS AND
ALL HANG BARS, LADDERS AND
CHAINS TO BE GALVANIZED STEEL PURLIN
ALL WELDS TO BE MADE BEFORE
GALVANIZING
FOR DATA SHEET & LIST OF DIMS
FOR PLOT PLAN SEE AA-6192B
FOR KEY PLAN OF FUEL OIL PIPING
SEE AA-6192B

DESIGNED BY
Pioneer Service & Engineering Co.
Engineers
SAN DIEGO GAS AND ELECTRIC COMPANY
ENGINEERING STATION-UNIT NO. 1
SAN DIEGO, CALIF.
AND STATE HIGHWAY
7+00

APPROVED
DATE 9-10-33
PROJECT NO. 1311-1122-AA
NO. AA 62307-B

REVISIONS	DATE	BY	APPROVED
A	GENERAL REVISION		
B	REVISION 8 LEAVING OF		
C	REVISION 8 LEAVING OF		
D	REVISION 8 LEAVING OF		
E	REVISION 8 LEAVING OF		
F	REVISION 8 LEAVING OF		
G	REVISION 8 LEAVING OF		
H	REVISION 8 LEAVING OF		
I	REVISION 8 LEAVING OF		
J	REVISION 8 LEAVING OF		
K	REVISION 8 LEAVING OF		
L	REVISION 8 LEAVING OF		
M	REVISION 8 LEAVING OF		
N	REVISION 8 LEAVING OF		
O	REVISION 8 LEAVING OF		
P	REVISION 8 LEAVING OF		
Q	REVISION 8 LEAVING OF		
R	REVISION 8 LEAVING OF		
S	REVISION 8 LEAVING OF		
T	REVISION 8 LEAVING OF		
U	REVISION 8 LEAVING OF		
V	REVISION 8 LEAVING OF		
W	REVISION 8 LEAVING OF		
X	REVISION 8 LEAVING OF		
Y	REVISION 8 LEAVING OF		
Z	REVISION 8 LEAVING OF		