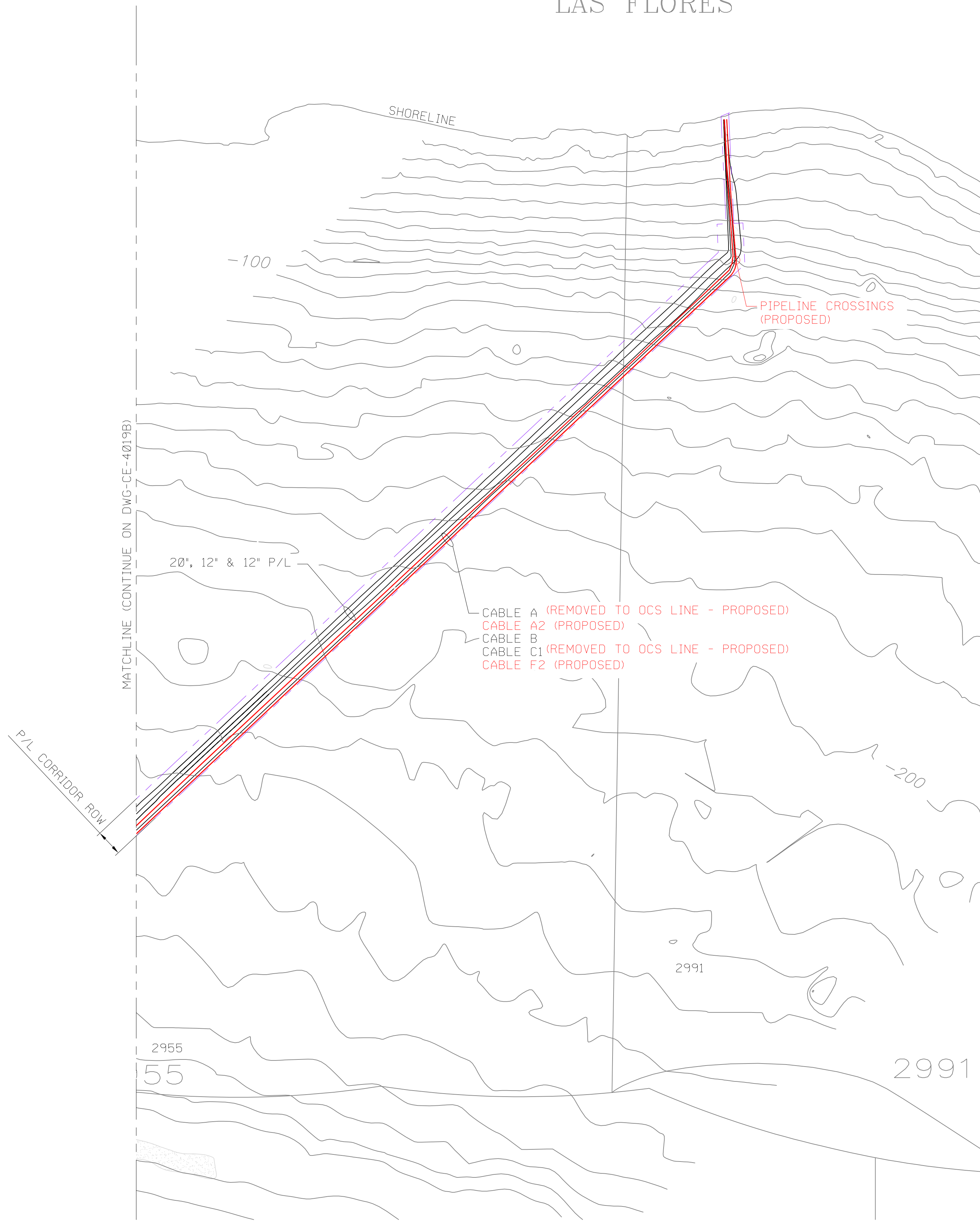
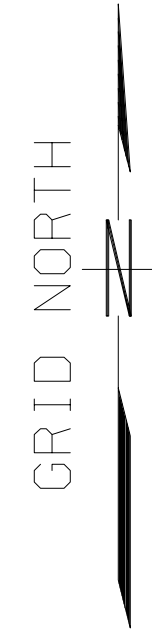


LAS FLORES



ISSUED BY:
Waldemar S. Nelson & Co.
PRELIMINARY
FOR REFERENCE ONLY
2/04/11
NOT FOR CONSTRUCTION

PROJECT: OPSR:B PRE-FEED

DRAWING: DWG-CE-4019C

PIPELINE & SUBSEA CABLE LAYOUT
PROPOSED CABLE A2 & F2 LAYOUT
SYU SHORELINE

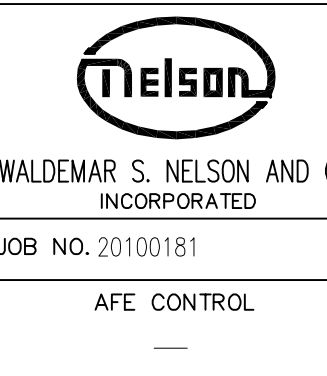
SANTA YNEZ UNIT SANTA BARBARA CHANNEL

NOTES:

- EXISTING PIPELINE AND CABLE ROUTINGS ARE BASED ON SURVEY BY FUGRO WEST, INC. (DRAWING NO. 06_AS_LAID_D1, DATED 12/12/03)

A	PRELIMINARY	2/04/11	PMc	THD	-	-					
No.	REVISION	DATE	REV BY	DISC ENGR	PE/EM	XOM APP.					

DRAWN BY	DATE
CMC	05/25/10
CHECKED BY	DATE
THD	2/04/11
WSN APPROVAL	DATE
-	-/-/-
XOM APPROVAL	DATE
-	-/-/-



SCALE	REV	YEAR	SIZE	DIV.	FIELD	OPTION	TYPE	SEQUENCE
1:15000	A	2010	E	10	410	W03		

DWG: R:\2010\20100181\XOM_CPCRV\4500_CD\PIPELINES\DWG-CE-4019C.DWG
 USER: Msc0359
 DATE: 2/11/2011 2:16:42 PM