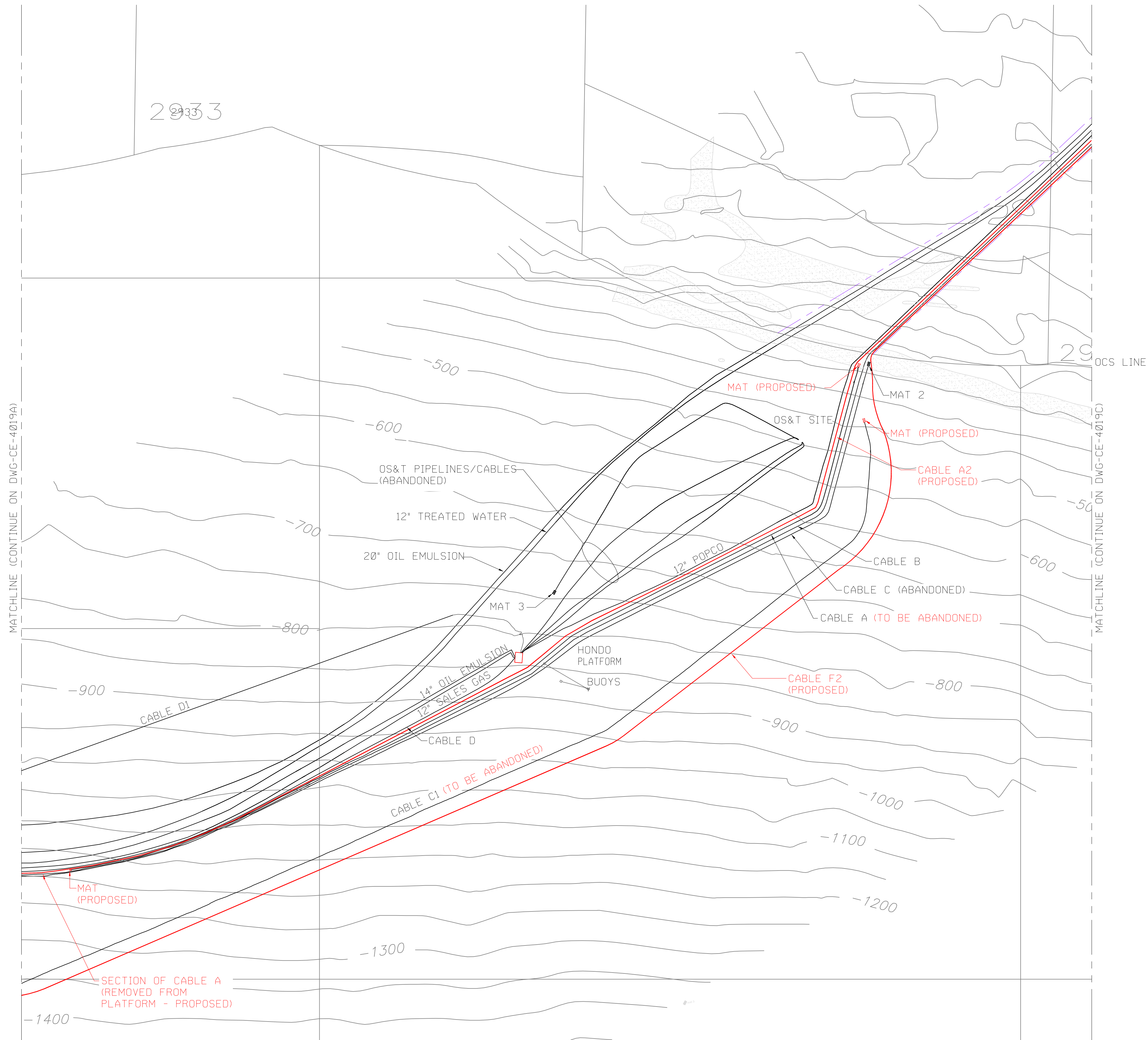


GRID NORTH



ISSUED BY:  
Waldemar S. Nelson & Co.  
PRELIMINARY  
FOR REFERENCE ONLY  
2/11/11  
NOT FOR CONSTRUCTION

PROJECT: OPSR:B PRE-FEED  
DRAWING: DWG-CE-4019B

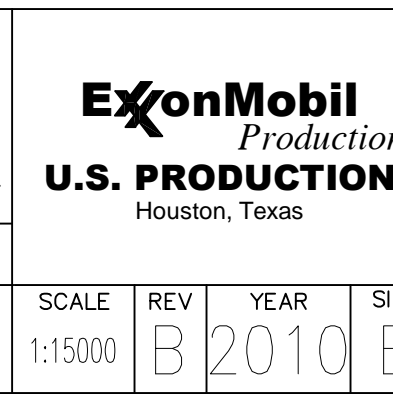
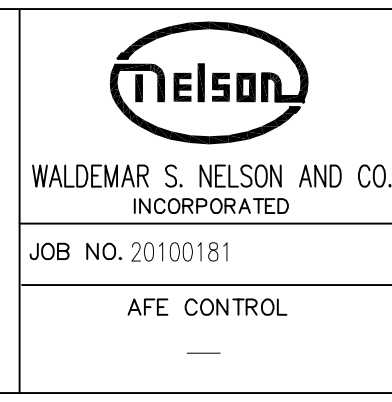
PIPELINE & SUBSEA CABLE LAYOUT PROPOSED CABLES A2 & F2 LAYOUT HONDO PLATFORM									
SANTA YNEZ UNIT SANTA BARBARA CHANNEL									
SCALE	REV	YEAR	SIZE	DIV.	FIELD	OPTION	TYPE	SEQUENCE	
1:15000	B	2010	E	10	410	W03			

**NOTES:**  
1. EXISTING PIPELINE AND CABLE ROUTINGS ARE BASED ON SURVEY BY FUGRO WEST, INC. (DRAWING NO. 06\_AS\_LAID\_D1, DATED 12/12/03)

REFERENCE DRAWINGS			
No.	REVISION	DATE	REV BY

B	GENERAL REVISION	2/11/11	PMc	THD	-	-
A	PRELIMINARY	2/04/11	PMc	THD	-	-
No.	REVISION	DATE	REV BY	DISC ENGR	PE/EM	XOM APP.

DRAWN BY	DATE
CMC	05/25/10
CHECKED BY	DATE
THD	02/11/11
WSN APPROVAL	DATE
-	-/-/-
XOM APPROVAL	DATE



DWG: R:\2010\20100181\XOM\_CPRV\4500\_CD\PIPELINES\DWG-CE-4019B.DWG  
 USER: Msc0359  
 DATE: 2/11/2011 4:17:23 PM