

MINUTE ITEM

This Calendar Item No. 27
was approved as Minute Item
No. 27 by the State Lands
Commission by a vote of 3
to 0 at its 10/28/82
meeting.

CALENDAR ITEM

27

10/28/82
W 2239
Horn

AUTHORIZATION TO SOLICIT REQUESTS FOR PROPOSALS
FOR DEVELOPMENT OF FILLED TIDELANDS AT
ANZA AIRPORT PARK, BURLINGAME, SAN MATEO COUNTY

BACKGROUND:

Through BLA 131 and more recently, Sovereign
Land Exchange 80 (SLL 80) the Commission
has acquired several parcels of filled
tidelands in the City of Burlingame, San
Mateo County. All of the parcels, except
one, were leased to Anza Pacific Corporation
(now Anza Shareholder's Liquidating Trust -
Anza). Inasmuch as Anza is liquidating
its holdings, including its State leaseholds,
staff feels that greater benefits would
accrue from having the four parcels discussed
in this item developed as a single unit
rather than piecemeal development. The
four parcels are shown on the attached
plat as parcels number 6, 7, 8 and 14.
Together they total about 8.8 acres.

The parcels are zoned C-4 (waterfront-
commercial) by the City of Burlingame.
C-4 District permitted uses include: commercial
recreation, restaurants, motels, clubs,
public recreation areas and other uses
if found desirable and compatible after
a public hearing. In addition, the Bay
Commission has approved an access plan
covering the subject parcels. The access
requirements together with zoning and deed
restrictions will undoubtedly result in
less dense development than much of the
surrounding land. However, less dense develop-
ment will help insure greater public access
through and around the property.

A 27

S 12

CALENDAR PAGE	<u>143</u>
MINUTE PAGE	<u>2055</u>

CALENDAR ITEM NO. 27 (CONTD)

This authorization covers only a request to solicit development proposals.

EXHIBITS: A. Parcel Plat.

IT IS RECOMMENDED THAT THE COMMISSION:

1. DETERMINE THAT AN ENVIRONMENTAL DOCUMENT IS NOT REQUIRED FOR THIS ACTIVITY PURSUANT TO P.R.C. 21065 AND 14 CAL. ADM. CODE 15037 AND 15060.
2. AUTHORIZE STAFF TO SOLICIT A DEVELOPER(S) TO DEVELOP THE STATE PARCELS SHOWN ON THE ATTACHED PLAT AS STATE PARCELS 6, 7, 8 AND 14, INCLUDING THE SOLICITATION OF REQUESTS FOR PROPOSALS FOR SUCH DEVELOPMENT.

CALENDAR PAGE	144
MINUTE PAGE	2876

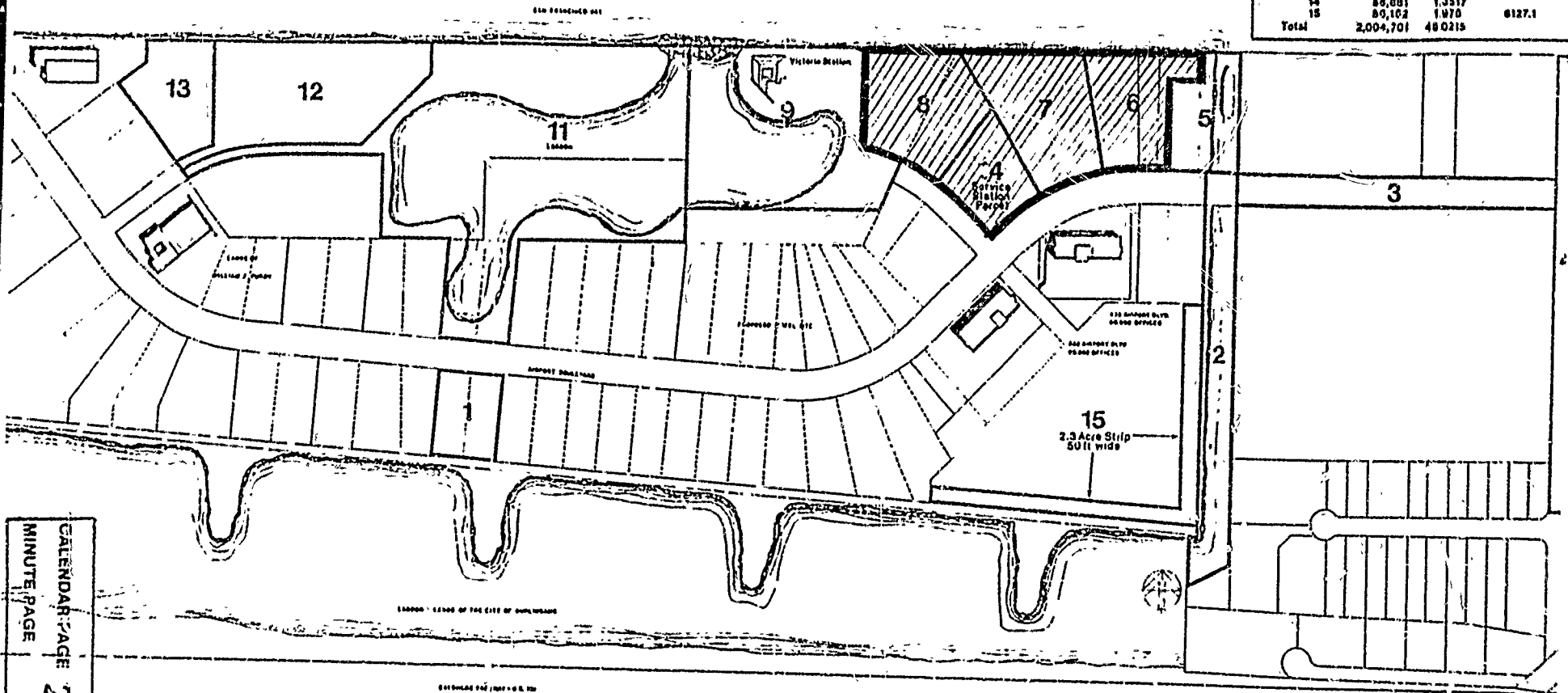
EXHIBIT "A"

W 22539

DATE: 10/1/83

ANZA PACIFIC CORP.

Block Parcel	Square Feet	Acres	Local PDC No.
1	84,000	1.2307	4883.1
2	120,402	1.7652	4890.9
3	87,399	1.2619	4886.0
4	110,009	1.5871	4882.9
5	61,835	0.8933	4897.1
6	94,036	1.3588	4884.1
7	117,030	1.6888	4895.1
8	115,639	1.6734	4898.1
9	282,073	4.0770	4887.1
11	585,088	8.4317	4889.1
12	100,902	1.4521	4890.1
13	75,001	1.0781	4891.1
14	88,881	1.2757	4892.1
15	89,162	1.2760	4893.1
Total	2,004,701	28.8219	



CALENDAR PAGE 145
 MINUTE PAGE 2077

1:10,000 - SCALE OF THE CITY OF BURLINGAME

DATE: 10/1/83