

MINUTE ITEM

This Calendar Item No. 615
was approved as Minute Item
No. 5 by the State Lands
Commission by a vote of 3
to 2 at its 7/22/82
meeting.

CALENDAR ITEM

C 0 5

7/22/82
W 22637
Louie
PRC 6181

APPROVAL OF PUBLIC AGENCY PERMIT
AND RIGHT-OF-WAY MAP

APPLICANT: California Department of Transportation
1120 N Street
Sacramento, California 95814
Attention: Mr. F. L. McWalters

AREA, TYPE LAND AND LOCATION: Sovereign lands as they may lie within
the right-of-way shown on Exhibit "A" attached.

LAND USE: Highway purposes pursuant to Section 101.5
of the Streets and Highways Code, specifically
realignment, reconstruction and protection
of Route 1, in Ventura County.

TERM: Indefinite period from December 8, 1980.

CONSIDERATION: As set forth by Section 101.5, Streets
and Highways Code, and the public use and
benefit.

STATUTORY AND OTHER REFERENCES:

- A. P.R.C.: Div. 6, Parts 1 and 2; Div. 13.
- B. Cal. Adm. Code: Title 2, Div. 3; Title 14,
Div. 6.
- C. Section 101.5 of the Streets and Highways
Code.

AB 884: 5/21/83.

A 38

S 19

CALENDAR PAGE	<u>1635</u> ²⁴
MINUTE PAGE	

CALENDAR ITEM NO. C 0 5 (CONTD)

OTHER PERTINENT INFORMATION:

1. The annual rental value of the site is estimated to be \$3,000.
2. On December 16, 1980, the Commission authorized the issuance of a Temporary Emergency Permit to the California Department of Transportation for the placement of riprap for highway protection. The riprap was placed at various locations on Pacific Coast Highway (State Route 1) between post mile 1.75 and 4.55. The emergency permit became effective December 8, 1980 and expired on February 28, 1981. The Department of Transportation has since made application for a Public Agency Permit which would cover the aforementioned riprapwork. In addition, the Department now proposes to realign the highway and construct a rock revetment for further protection.
3. A portion of this project is exempt from CEQA pursuant to 14 Cal. Adm. Code, Div. 6, Section 15101 (existing features). The Realignment portion of the project was addressed by a Negative Declaration which was prepared and certified by the Department of Transportation, pursuant to CEQA and the State CEQA Guidelines. The Department of Transportation found that the project will not have a significant effect upon the environment.

The project is situated on lands identified as possessing environmental values in that the State Lands Commission stated all waterways under the Commission's jurisdiction have environmental significance. Staff finds this project to be compatible with Commission policy.

EXHIBITS:

- A. Right-of-Way Map.
- B. Location Map.
- C. Negative Declaration.

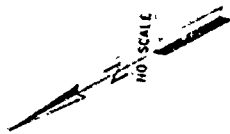
CALENDAR ITEM NO. C 0 5 (CONTD)

IT IS RECOMMENDED THAT THE COMMISSION:

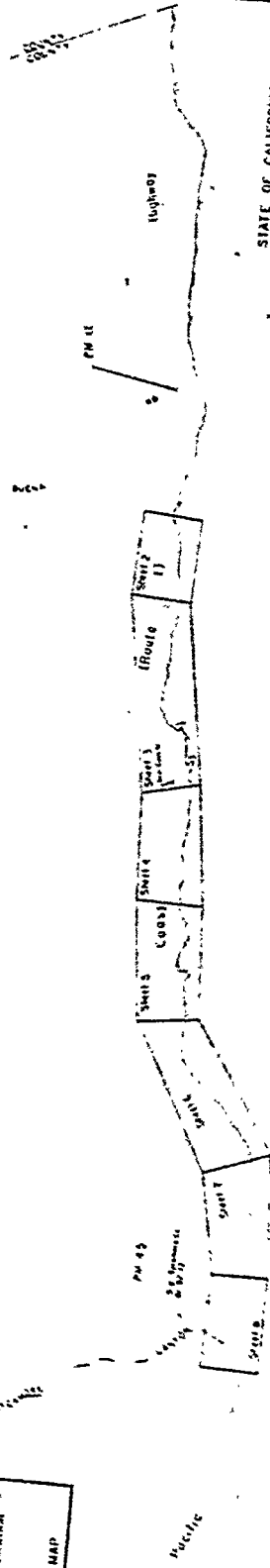
1. DETERMINE THAT AN ENVIRONMENTAL DOCUMENT HAS NOT BEEN PREPARED FOR A PORTION OF THIS ACTIVITY AS SUCH DOCUMENT IS NOT REQUIRED UNDER THE PROVISIONS OF P.R.C. 21084, 14 CAL. ADM. CODE 15100 ET SEQ. AND THAT A NEGATIVE DECLARATION HAS BEEN PREPARED FOR THE REALIGNMENT PORTION OF THE PROJECT BY THE DEPARTMENT OF TRANSPORTATION.
2. CERTIFY THAT COMMISSION STAFF HAS REVIEWED AND CONSIDERED INFORMATION CONTAINED IN THE NEGATIVE DECLARATION.
3. DETERMINE THAT THE PROJECT WILL NOT HAVE A SIGNIFICANT EFFECT ON THE ENVIRONMENT.
4. FIND THAT THIS ACTIVITY IS SITUATED ON LAND IDENTIFIED AS POSSESSING ENVIRONMENTAL VALUES IN THAT THE STATE LANDS COMMISSION FOUND ALL WATERWAYS UNDER THE COMMISSION'S JURISDICTION HAVE ENVIRONMENTAL SIGNIFICANCE, BUT THAT THIS ACTIVITY IS COMPATIBLE WITH THAT FINDING AS IT APPLIES TO THE SUBJECT LAND.
5. APPROVE THE MAP FILED BY CALIFORNIA DEPARTMENT OF TRANSPORTATION, PURSUANT TO SECTION 101.5 OF THE STREETS AND HIGHWAYS CODE, AS SHOWN ON EXHIBIT "A" ATTACHED AND BY REFERENCE MADE A PART HEREOF.
6. AUTHORIZE THE ISSUANCE TO CALIFORNIA DEPARTMENT OF TRANSPORTATION OF A PUBLIC AGENCY PERMIT FOR AN INDEFINITE PERIOD BEGINNING DECEMBER 8, 1980, FOR HIGHWAY PURPOSES ON THE LAND SHOWN ON EXHIBIT "A".

(Non-substantive revision 11/24/82)

STATE OF CALIFORNIA
STATE LANDS COMMISSION



COUNTY OF VENTURA



STATE OF CALIFORNIA
STATE LANDS COMMISSION
These maps containing 8 sheets are hereby
approved and filed for record with the Register
of State Lands pursuant to the provisions of
Section 1025 of the Streets and Highways Code.
The description herein is subject to the
State Lands Commission or they may, if within
the legal right of way lines shown on these maps be
hereby altered for highway purposes.
APPROVED Meeting:
State Lands Commission
By _____
County Clerk, Ventura County, and
Commissioner of State Lands

STATE OF CALIFORNIA
BUREAU OF RECONSTRUCTION, RECORD
SECTION OF RECONSTRUCTION
BY W-1-125495
R/W INDEX MAP
Scale as Noted SHEET NO. 1 OF 8

CALIFORNIA OCEAN

Titles of bearing for base corners S of High of Way
as described in Maps
1. Recorded August 23, 1928 in Vol 216
page 273 of Official Records of
Ventura County, California
2. Recorded September 13, 1939 in Vol 376
page 245 of Official Records of
Ventura County, California
3. Recorded September 18, 1937 in Vol 522
page 305 of Official Records of
Ventura County, California
4. Coordinates shown on this map are based on
California Coordinate System, Zone 5
5. Distances shown on this map are ground
distances

IN VENTURA COUNTY
Between a point 1 1/2 miles west of the
E. A. Van Cui Line and the Ventura Creek for
showing flight of way, hereafter, for the
protection of a right-of-way
Of-4m 1 1/2/455

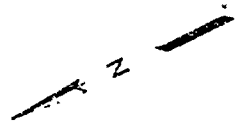
ENGINEERS STATE MAP 11
These maps containing 8 sheets were prepared
under my direction to establish an appropriation
for State Lands made pursuant to Section 1015
of the Streets and Highways Code
WAT. J. M. M. M.
Checked in Length
Public Works Engineer
S.C.E. 40104

EXHIBIT "A" LAND DESCRIPTION SHEET NO. 1

CALENDAR PAGE	27
MINUTE PAGE	1698

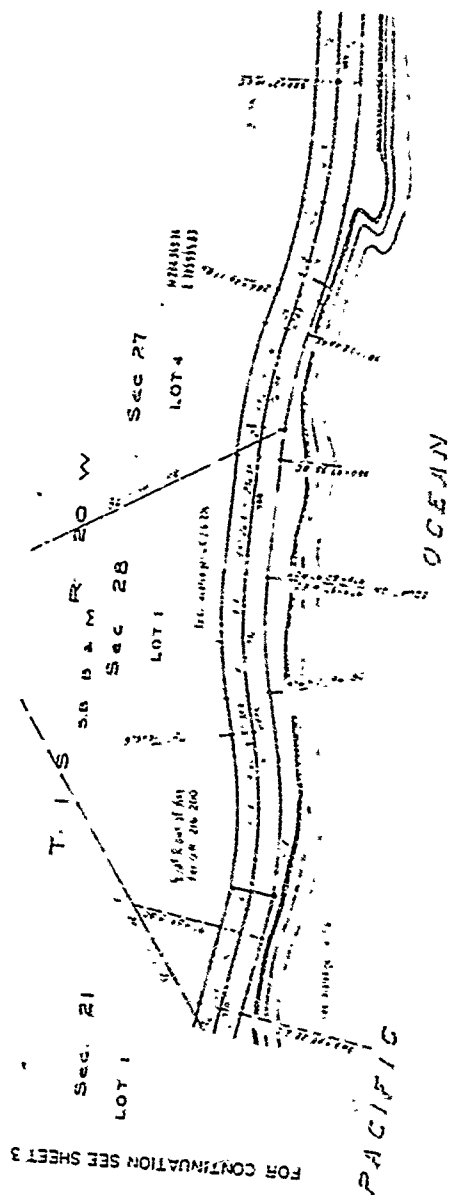
W 22637

PROPERTY IN W. 1/4



STATE OF CALIFORNIA
 PUBLIC UTILITIES
 DEPARTMENT OF TRANSPORTATION

R/W MAP
 Sheet 5 of 11
 OT-VEN-1-175
 APPROVED BY THE BOARD OF SUPERVISORS
 COUNTY OF SAN FRANCISCO



CALENDAR PAGE	28
MINUTE PAGE	1699

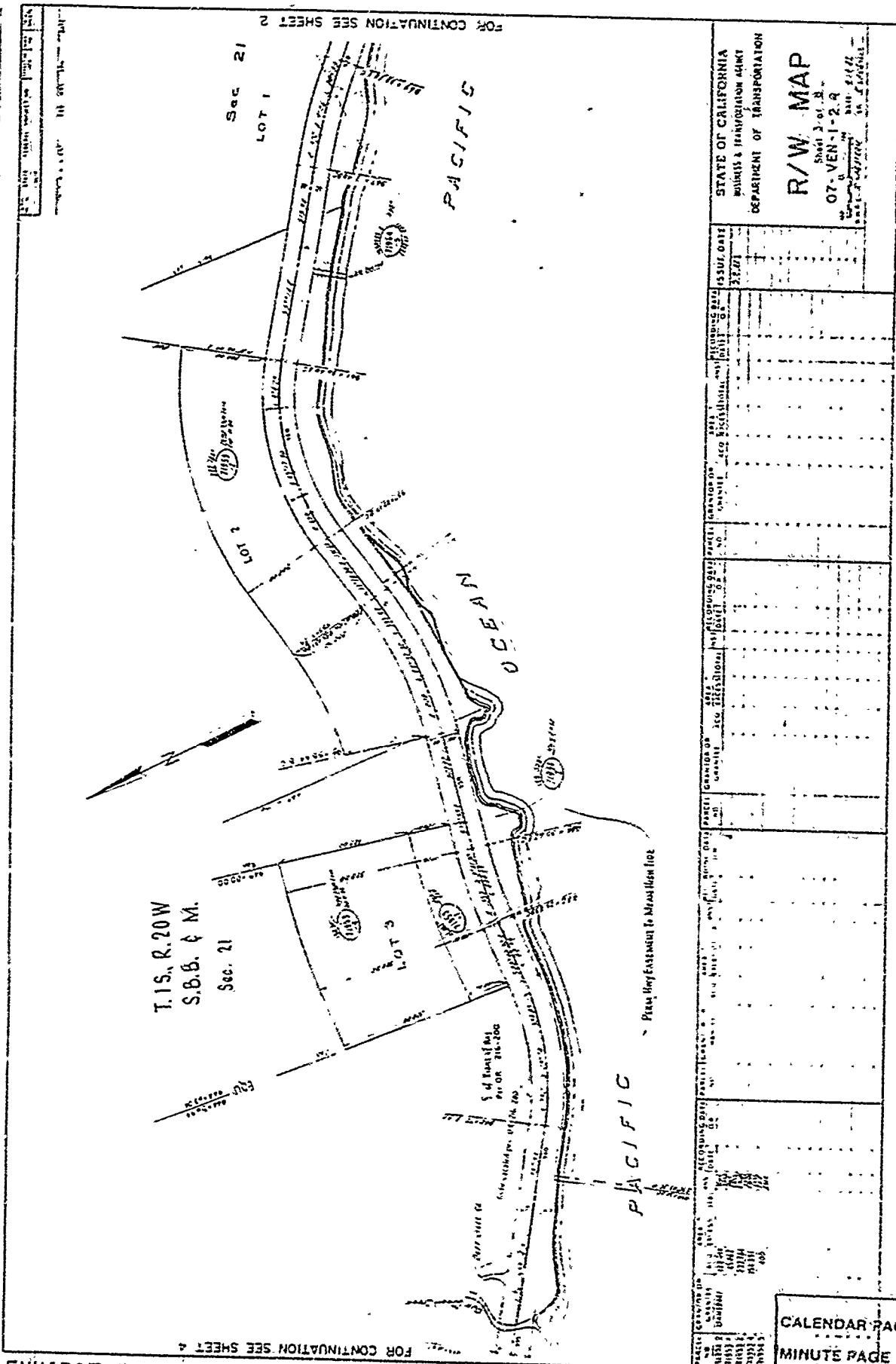


EXHIBIT "A" LAND DESCRIPTION; SHEET NO 3

CALENDAR PAGE 29
 MINUTE PAGE 1700

W 22637

STATE OF CALIFORNIA
 PUBLIC & TRANSPORTATION WORKS
 DEPARTMENT OF TRANSPORTATION

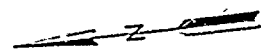
R/W MAP
 Sheet 3 of 8
 07-VEN-1-2-A

ISSUE DATE	RECORDING DATE	SECTION OR CORNER	SECTION OR CORNER	SECTION OR CORNER	SECTION OR CORNER	SECTION OR CORNER	SECTION OR CORNER	SECTION OR CORNER	SECTION OR CORNER	SECTION OR CORNER	SECTION OR CORNER

FOR CONTINUATION SEE SHEET 2

FOR CONTINUATION SEE SHEET 4

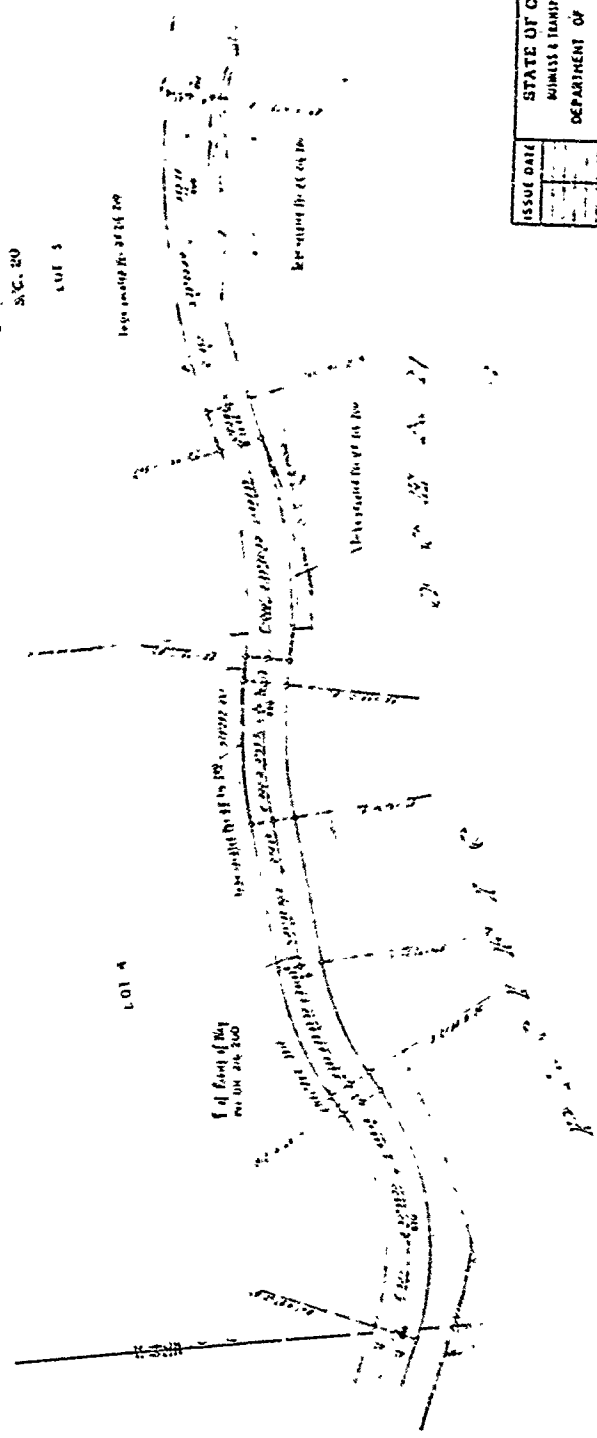
SHEET NO. 6
 COUNTY OF VENTURA
 SECTION 20
 T. 1 S., R. 20 W.,
 S. D. B. & M.
 S.W. 20



COUNTY OF VENTURA

T. 1 S., R. 20 W.,
 S. D. B. & M.
 S.W. 20
 LOT 5

FOR CONTINUATION SEE SHEET 5



FOR CONTINUATION SEE SHEET 7

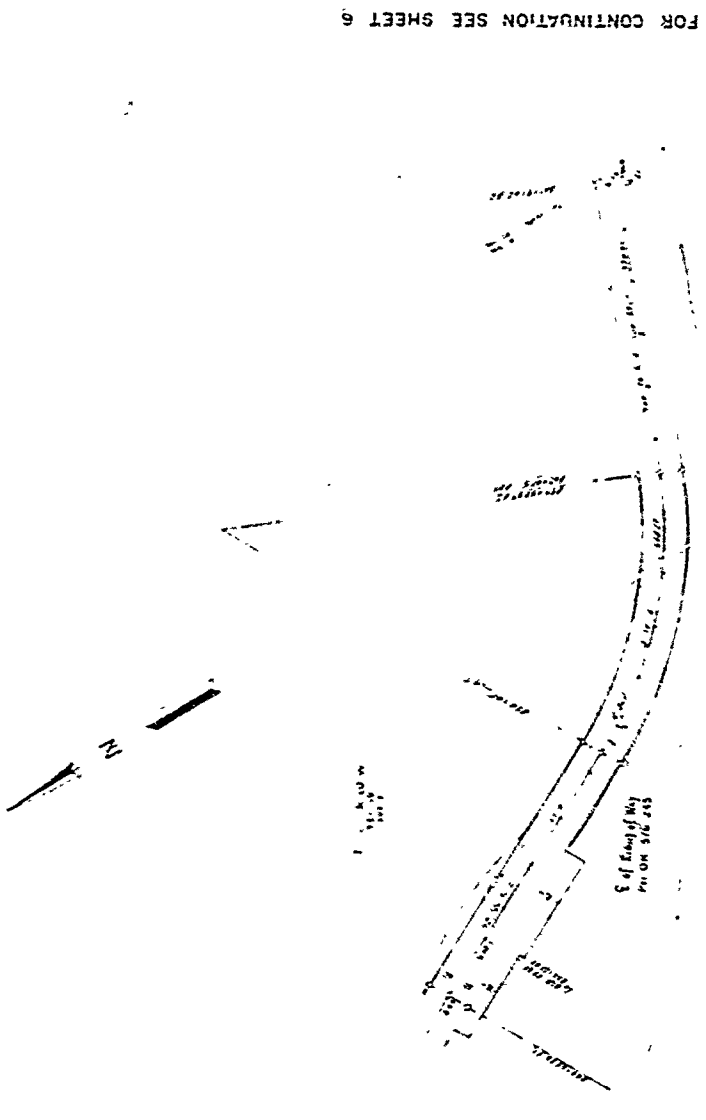
STATE OF CALIFORNIA
 MINUTES & TRANSPORTATION AGENT
 DEPARTMENT OF TRANSPORTATION
R/W MAP
 Sheet 6 of 6
 07-VEN-1-37
 DRAWN BY: [Signature]
 CHECKED BY: [Signature]

ISSUE DATE	BY	REASON

CALENDAR PAGE	32
MINUTE PAGE	1703

Scale 1" = 100'

North Arrow



FOR CONTINUATION SEE SHEET 6

FOR CONTINUATION SEE SHEET 8

STATE OF CALIFORNIA HIGHWAYS & TRANSPORTATION AGENCY DEPARTMENT OF TRANSPORTATION	
R/W MAP	
Sheet 7 of 8	
07-VEN-1-41	
DATE: 5-2-62	
BY: [Signature]	
IN CHARGE: [Signature]	

PACIFIC

CALENDAR PAGE	33
MINUTE PAGE	1704

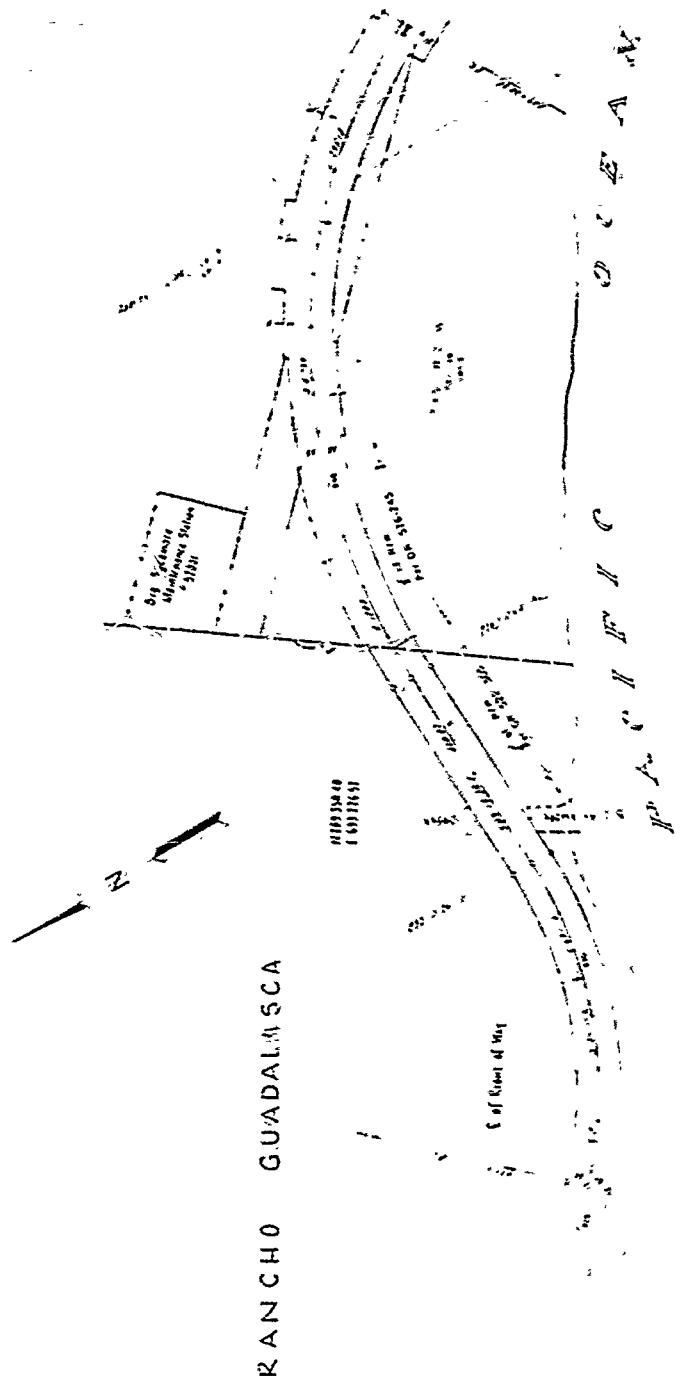
DATE	ISSUED	BY	REVISION

FOR CONTINUATION SEE SHEET 7

STATE OF CALIFORNIA
 HIGHWAYS & TRANSPORTATION AGENCY
 DEPARTMENT OF TRANSPORTATION

R/W MAP
 Sheet No. of 8
 07-VEN-1-45
 SAN JOAQUIN VALLEY
 CALIFORNIA

ISSUE DATE	BY	REVISION



RANCHO GUADALUPE

CALENDAR PAGE	34
MINUTE PAGE	1705

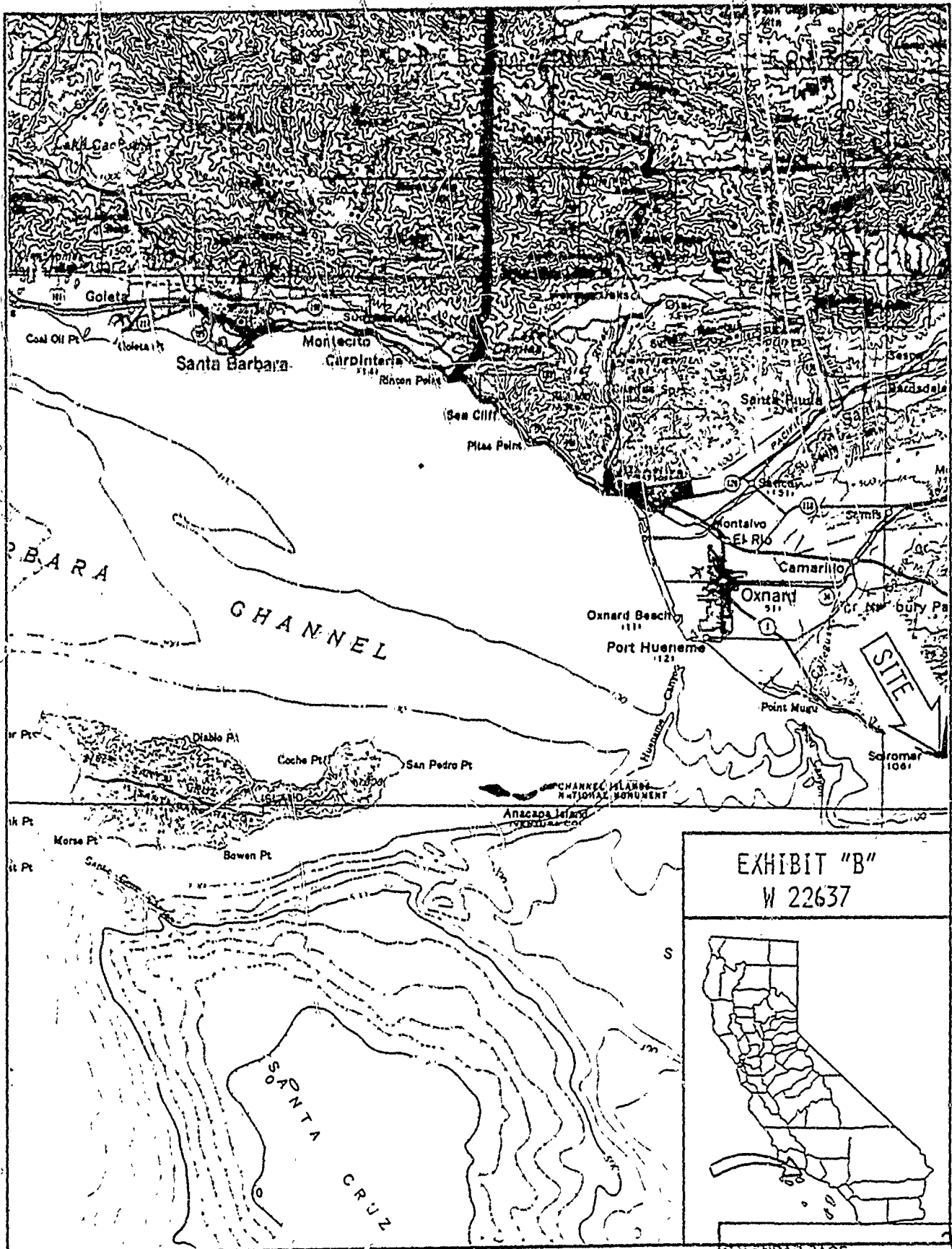


EXHIBIT "B"
W 22637



CALENDAR PAGE	35
MINUTE PAGE	1706

STATE OF CALIFORNIA
DEPARTMENT OF TRANSPORTATION

District 07 County Ventura Route 1
P.M. 2.2/3.2
E.A. 07213 - 015530
SCH. No. 82012216

NEGATIVE DECLARATION

Pursuant to: Division 13 Public Resources Code (State)

Description: The proposed project is located in a mountainous coastal setting in Ventura County on State Highway 1 at Deer Creek Road about 2-1/2 miles from the Los Angeles County Line. Two massive landslides have occurred and continuously falling debris are interfering with highway operations and are threatening to close the highway again. It is proposed to realign the highway away from the slides and towards the ocean, provide an area to catch slides and debris, remove some of the slide material from the mountainside, and protect the highway from the ocean with a rock revetment.

Most of the work will be within the existing right-of-way. A small amount right-of-way will have to be acquired. There is no development in the area.

Determination: An ~~environmental~~ study has been prepared by CALTRANS and is available from K. D. Steele, Chief of the District's Environmental Planning Branch, 120 South Spring Street, Los Angeles, California 90012.

It is determined that the proposed action will not have a significant effect on the environment for the following reasons:

1. The project will not induce growth or alter the overall appearance of the surrounding area. No change in the composition or volume of traffic is anticipated.
2. No parks, designated recreational areas, historical or archeological resources or other 4(f) properties will be significantly affected.
3. No religious or school facilities, public utilities, fire and emergency services will be adversely affected.
4. There will be no community impacts involving residential and neighborhood stability.
5. No residential or commercial units will be acquired.
6. There will be no significant change in air quality, noise levels, aesthetic quality or water quality as a result of the project.
7. Wildlife or wildlife habitat will not be adversely affected.
8. Vegetation will not be adversely affected.
9. The project will not result in or increase the flood potential of the area.

Ann Barkley
ANN BARKLEY, Chief
Division of Transportation Planning

March 26, 1982
Date

CALENDAR PAGE	36
MINUTE PAGE	1707