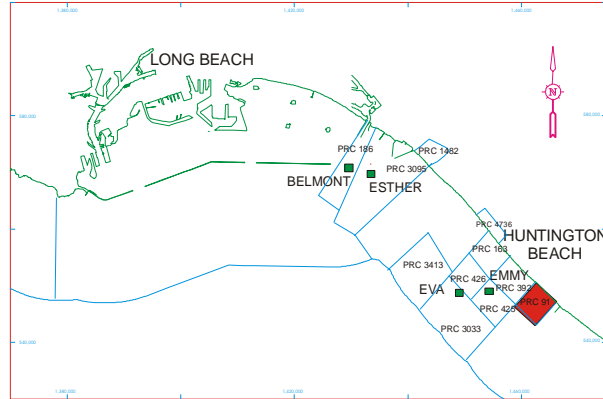
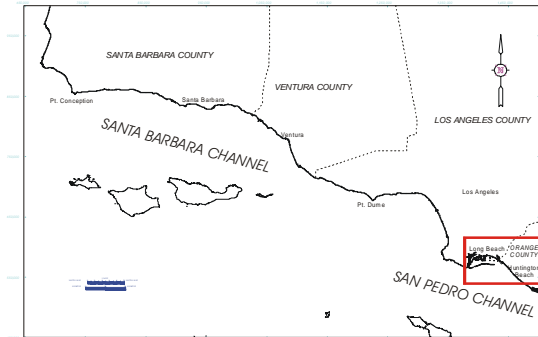


STATE TIDELANDS OIL AND GAS LEASES

PRC 91 **COUNTY** Orange
LESSEE Aera Energy LLC, et al.
OPERATOR Aera **FIELD** Huntington Beach



LEASE ISSUE DATE 05/21/1943

ROYALTY RATE Price based sliding scale on oil

BONUS Bid factor 1.63

MORATORIUM Lifted January 1977

ACREAGE 589

CLEANUP/SWARS Not part of project

TYPE LEASE Pre Cunningham-Shell

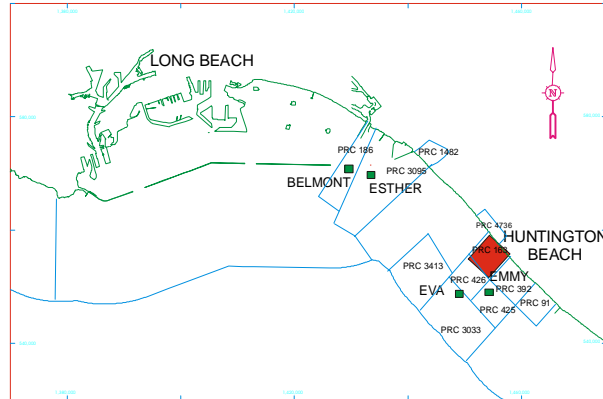
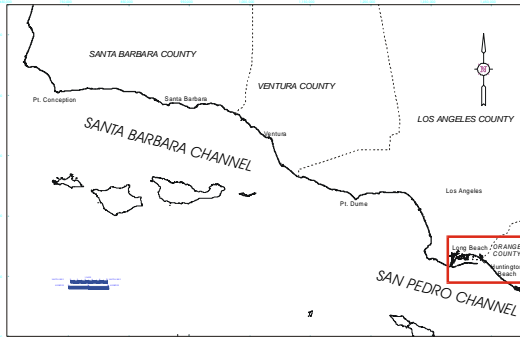
QUITCLAIM REQUESTED No

LEASE STATUS Producing

Lease amended 11/57 for term of 5 years and for so long thereafter as producing in paying quantities. Price based sliding scale on oil royalty since 1995. The lease is fully developed and held by production. Lease 91 unitized with 37 single well leases into 91 Main Zone Unit 3/72 and Upper Main Zone Waterflood approved 6/95.

STATE TIDELANDS OIL AND GAS LEASES

PRC 163 **COUNTY** Orange
LESSEE Aera Energy LLC, et al.
OPERATOR Aera **FIELD** Huntington Beach



LEASE ISSUE DATE 11/15/1944

ROYALTY RATE Price based sliding scale on oil

BONUS Bid factor 1.1

MORATORIUM Lifted January 1977

ACREAGE 640

CLEANUP/SWARS Not part of project

TYPE LEASE Pre Cunningham-Shell

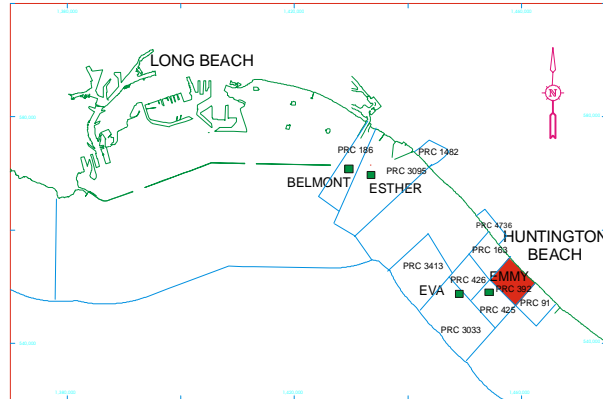
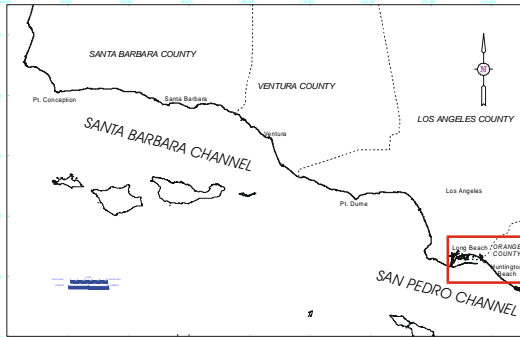
QUITCLAIM REQUESTED No

LEASE STATUS Producing

Lease amended 5/64 for term of 5 years and for so long thereafter as producing in paying quantities. Price based sliding scale on oil royalty since 1995. The lease is fully developed and held by production. Upper Main Zone Waterflood approved 6/95.

STATE TIDELANDS OIL AND GAS LEASES

PRC 392 **COUNTY** Orange
LESSEE Aera Energy LLC, et al.
OPERATOR Aera **FIELD** Huntington Beach



LEASE ISSUE DATE 09/20/1938

ROYALTY RATE Price based sliding scale on oil

BONUS Bid factor 1.1

MORATORIUM Lifted January 1977

ACREAGE 835

CLEANUP/SWARS Not part of project

TYPE LEASE Pre Cunningham-Shell

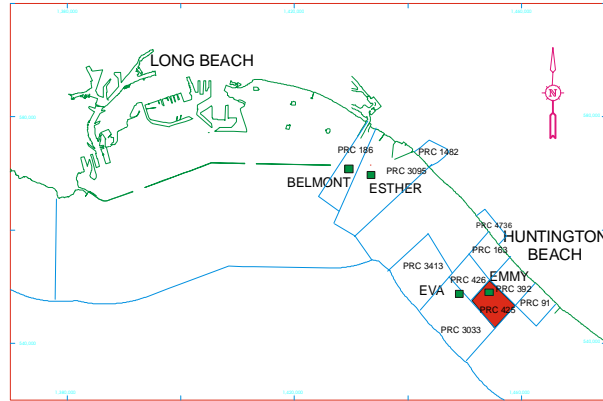
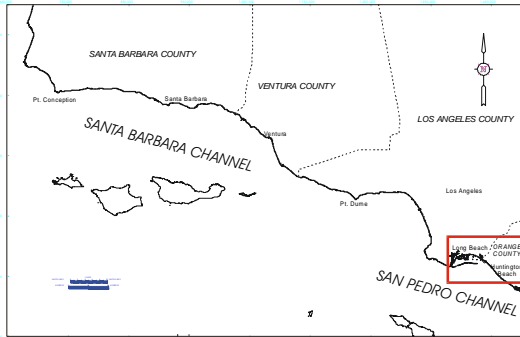
QUITCLAIM REQUESTED No

LEASE STATUS Producing

Lease amended 9/58 for term of 5 years and for so long thereafter as producing in paying quantities. Price based sliding scale on oil royalty since 1995. The lease is fully developed and held by production. Upper Main Zone Waterflood approved 6/95.

STATE TIDELANDS OIL AND GAS LEASES

PRC 425 **COUNTY** Orange
LESSEE Aera Energy LLC, et al.
OPERATOR Aera **FIELD** Huntington Beach



LEASE ISSUE DATE 02/10/1950

ROYALTY RATE Price based sliding scale

BONUS Bid factor 1.1

MORATORIUM Lifted January 1977

ACREAGE 835

CLEANUP/SWARS Not part of project

TYPE LEASE Pre Cunningham-Shell

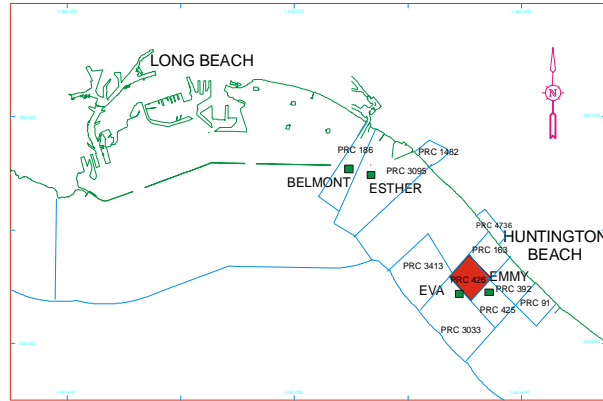
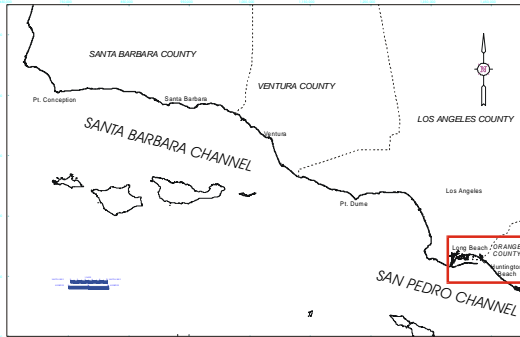
QUITCLAIM REQUESTED No

LEASE STATUS Producing

Lease amended 8/64 for term of 5 years and for so long thereafter as producing in paying quantities. Price based sliding scale on oil royalty since 1995. The lease is fully developed and held by production. Upper Main Zone Waterflood approved 6/95.

STATE TIDELANDS OIL AND GAS LEASES

PRC 426 **COUNTY** Orange
LESSEE Aera Energy LLC, et al.
OPERATOR Aera **FIELD** Huntington Beach



LEASE ISSUE DATE 02/10/1950

ROYALTY RATE Price based sliding scale on oil

BONUS Bid factor 1.1

MORATORIUM Lifted January 1977

ACREAGE 640

CLEANUP/SWARS Not part of project

TYPE LEASE Pre Cunningham-Shell

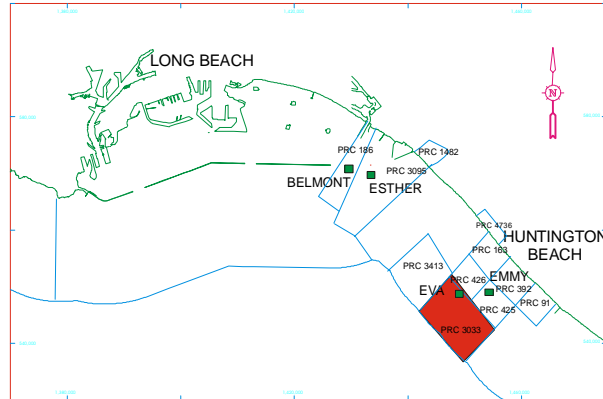
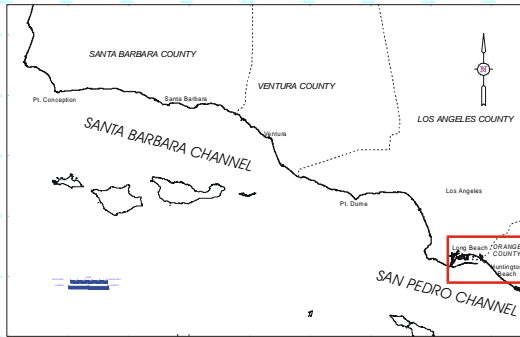
QUITCLAIM REQUESTED No

LEASE STATUS Producing

Lease amended 8/64 for term of 5 years and for so long thereafter as producing in paying quantities. Price based sliding scale on oil royalty since 1995. The lease is fully developed and held by production. Upper Main Zone Waterflood approved 6/95.

STATE TIDELANDS OIL AND GAS LEASES

PRC 3033 **COUNTY** Orange
LESSEE DCOR, LLC
OPERATOR DCOR, LLC **FIELD** Huntington Beach



LEASE ISSUE DATE 07/25/1963

ROYALTY RATE Fixed 17.26%

MORATORIUM Lifted December 1985

CLEANUP/SWARS Not part of project

BONUS \$6,110,000.00

ACREAGE 2113

TYPE LEASE Cunningham-Shell

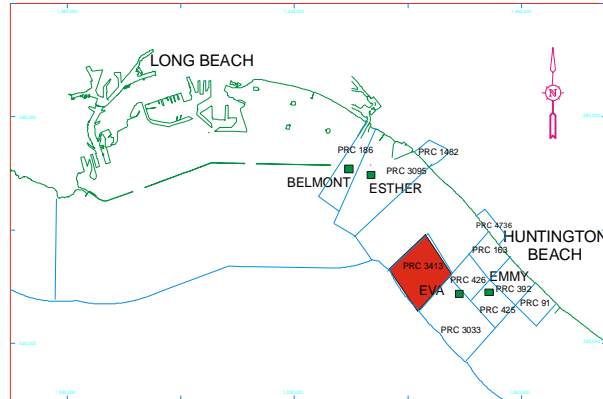
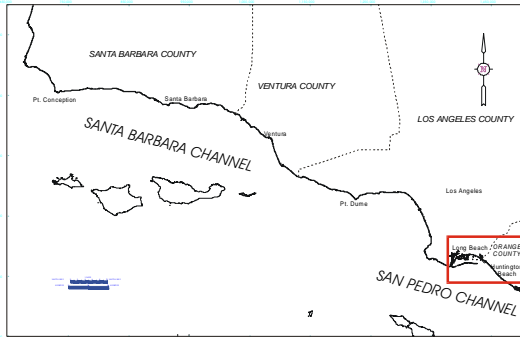
QUITCLAIM REQUESTED No

LEASE STATUS Producing

Lease term 20 years and for so long thereafter as producing in paying quantities. Upper Main Zone Waterflood approved 6/95 with royalty fixed at 17.26% upon injection of 7500 barrels water per day on 1/98. Commission approved assignment from Plains Exploration and Production Co. (PXP) to Dos Cuadras Oil Resources (DCOR) on 10/20/2005. The lease is fully developed and held by production.

STATE TIDELANDS OIL AND GAS LEASES

PRC 3413 **COUNTY** Orange
LESSEE DCOR, LLC
OPERATOR DCOR, LLC **FIELD** Huntington Beach



LEASE ISSUE DATE	12/01/1965	
ROYALTY RATE	Fixed 17.26%	BONUS None
MORATORIUM	Still in effect	ACREAGE 1871
CLEANUP/SWARS	Not part of project	TYPE LEASE Cunningham-Shell
		QUITCLAIM REQUESTED No
LEASE STATUS	Not producing	

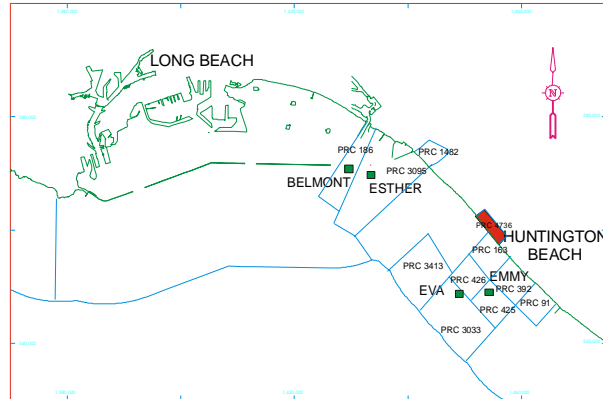
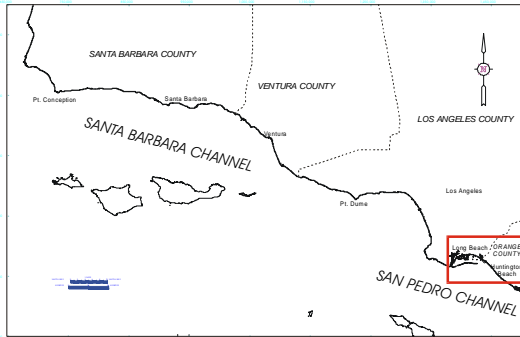
Lease term 20 years and for so long thereafter as producing in paying quantities. Assigned and severed from PRC 3177 11/65. Upper Main Zone Waterflood approved 6/95 with royalty fixed at 17.26% upon injection of 7500 barrels water per day on 1/98. Commission approved assignment from Plains Exploration and Production Co. (PXP) to Dos Cuadras Oil Resources (DCOR) on 10/20/2005. The lease is fully developed and currently used for water flooding.

STATE TIDELANDS OIL AND GAS LEASES

PRC 4736
LESSEE Aera Energy LLC
OPERATOR Aera

COUNTY Orange

FIELD Huntington Beach



LEASE ISSUE DATE 01/25/1973

ROYALTY RATE Fixed 16 2/3%

BONUS None

MORATORIUM Not subject to moratorium

ACREAGE 70

CLEANUP/SWARS Not part of project

TYPE LEASE See Lease Status

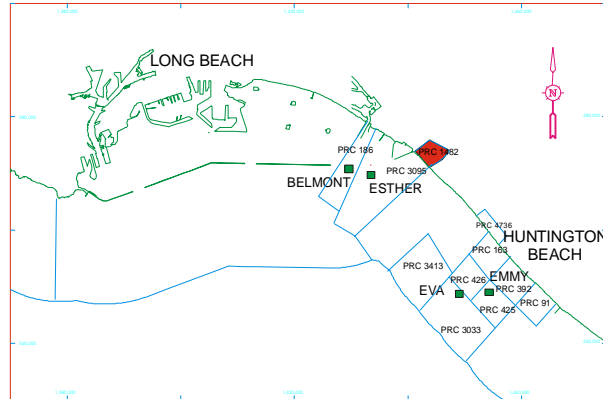
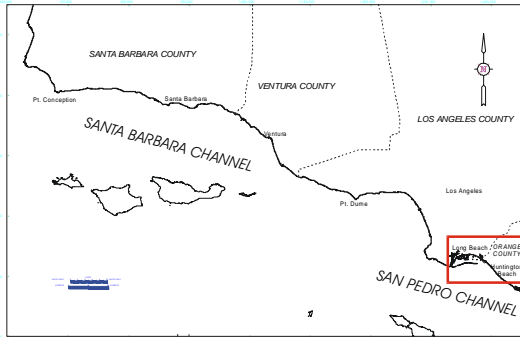
QUITCLAIM REQUESTED No

LEASE STATUS Producing

Lease issued as part of Bolsa Chica boundary settlement 1/73. SLC interest in North Bolsa is 0.3177%, South Bolsa is 6.2376% (equity interests). The lease is fully developed and held by production.

STATE TIDELANDS OIL AND GAS LEASES

PRC 1482 **COUNTY** Orange
LESSEE Breitburn Energy Corp.
OPERATOR Breitburn **FIELD** Seal Beach



LEASE ISSUE DATE 01/21/1955

ROYALTY RATE Fixed 16 2/3%

BONUS None

MORATORIUM Not subject to moratorium

ACREAGE 54

CLEANUP/SWARS Not part of project

TYPE LEASE See Lease Status

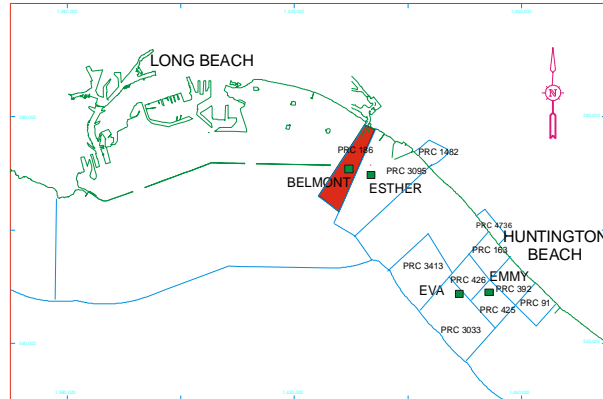
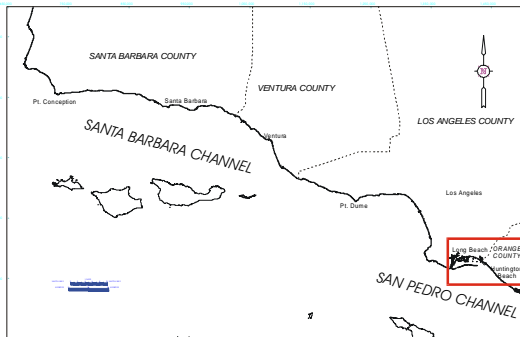
QUITCLAIM REQUESTED No

LEASE STATUS Producing

Compensatory Royalty Agreement 1/55 (compensation for drainage of State-owned lands from wells drilled on private lands). SLC interest is 8.6862% (equity interest in field). The agreement is effective for so long as drainage occurs from adjacent private lands.

STATE TIDELANDS OIL AND GAS LEASES

PRC 186 **COUNTY** Orange
LESSEE OXY Long Beach, Inc.
OPERATOR OXY **FIELD** Belmont Offshore

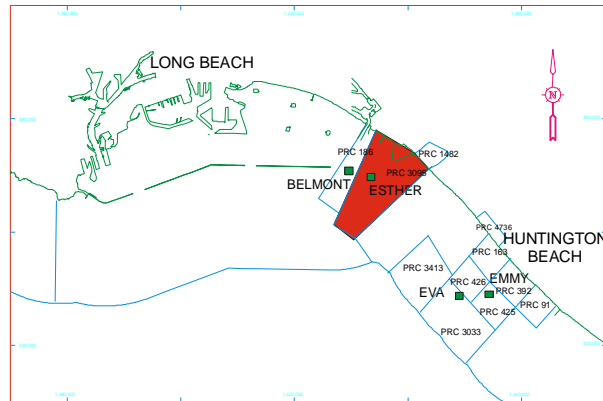
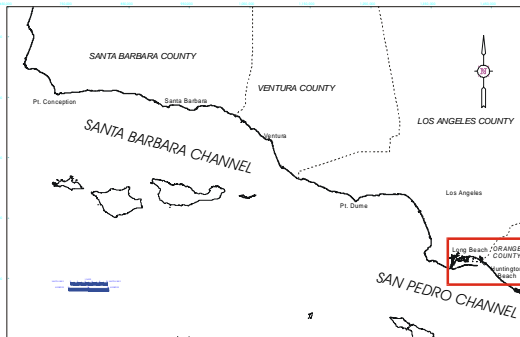


LEASE ISSUE DATE 09/24/1945	BONUS Bid factor 1.1
ROYALTY RATE Fixed 17.88%	ACREAGE 1255
MORATORIUM Lifted April 1976	TYPE LEASE Pre Cunningham-Shell
CLEANUP/SWARS Not part of project	QUITCLAIM REQUESTED No
 LEASE STATUS Producing	

Lease amended 2/50 for term of 20 years and for so long thereafter as producing in paying quantities. Belmont Island installed 1952. Island and all wells abandoned and island removed by Exxon. Assignment of lease (subsurface only) from Exxon and Texaco to Occidental Petroleum approved on 12/16/02. Occidental Petroleum is continuing the redevelopment of the lease from the Long Beach Unit's Island Chaffee.

STATE TIDELANDS OIL AND GAS LEASES

PRC 3095 **COUNTY** Orange
LESSEE DCOR, LLC
OPERATOR DCOR, LLC **FIELD** Belmont Offshore

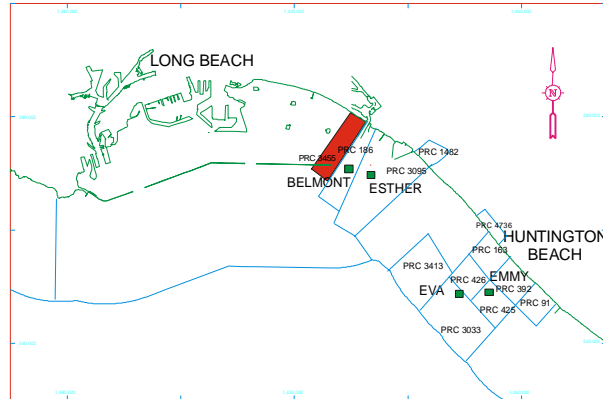
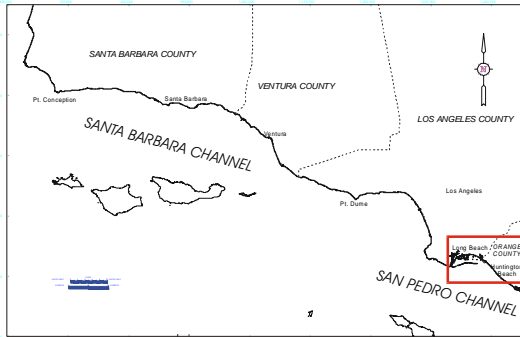


LEASE ISSUE DATE	01/30/1964	
ROYALTY RATE	Fixed 16.88%	BONUS \$4,066,676.00
MORATORIUM	Lifted November 1974	ACREAGE 3360
CLEANUP/SWARS	Not part of project	TYPE LEASE Cunningham-Shell
		QUITCLAIM REQUESTED No
LEASE STATUS	Producing	

Lease term 20 years and for so long thereafter as producing in paying quantities. Island destroyed by storm 2/83. Platform Esther authorized 3/84. Production restarted on Platform Esther May 1991. Commission approved assignment from Plains Exploration and Production Co. (PXP) to Dos Cuadras Oil Resources (DCOR) on 10/20/2005. Lease development continues with well workovers, injection conversions, and well maintenance work.

STATE TIDELANDS OIL AND GAS LEASES

PRC 3455 **COUNTY** Los Angeles
LESSEE OXY Long Beach, Inc.
OPERATOR OXY Long Beach, Inc. **FIELD** Wilmington



LEASE ISSUE DATE 03/11/1966

ROYALTY RATE Net profits share

BONUS 23.667% overriding royalty for limited term

MORATORIUM Not subject to moratorium

ACREAGE 592

CLEANUP/SWARS Not part of project

TYPE LEASE See Lease Status

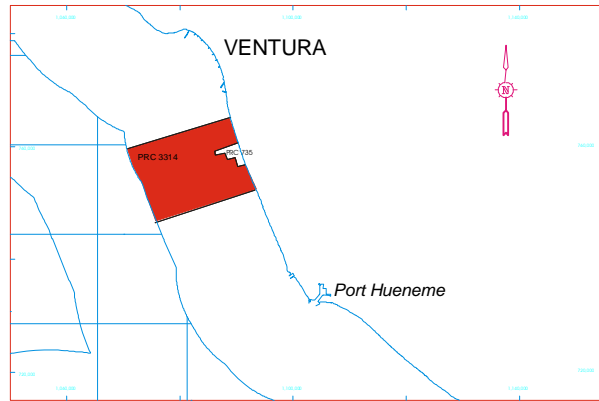
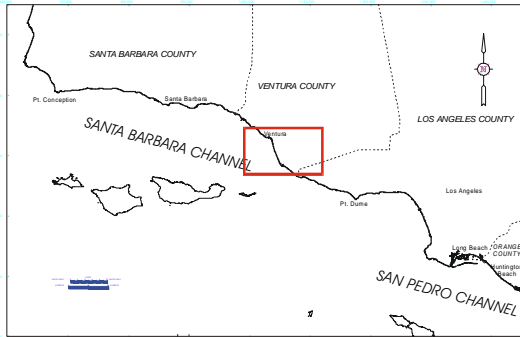
QUITCLAIM REQUESTED No

LEASE STATUS Producing

The lease is Tract 2 of the Long Beach Unit with terms and conditions conforming to Long Beach Unit operations and will remain in effect for the term of the Unit.

STATE TIDELANDS OIL AND GAS LEASES

PRC 3314 COUNTY Ventura
LESSEE Venoco, Inc.
OPERATOR Venoco FIELD West Montalvo



LEASE ISSUE DATE 07/02/1965

ROYALTY RATE Sliding scale 16 2/3% - 50%

BONUS \$3,299,685.00

MORATORIUM Lifted April 1981

ACREAGE 5430

CLEANUP/SWARS Not part of project

TYPE LEASE Cunningham-Shell

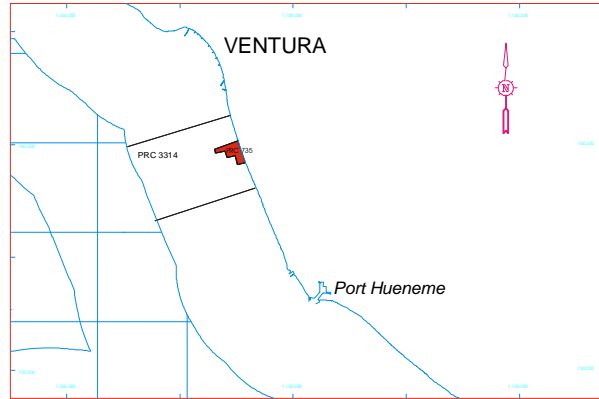
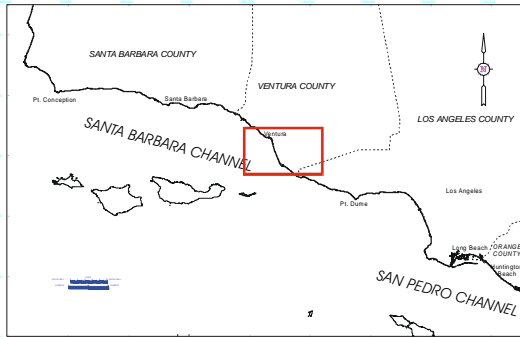
QUITCLAIM REQUESTED No

LEASE STATUS Producing

Lease term 20 years and for so long thereafter as producing in paying quantities. Initial production 6/85. Assignment from Chevron & Shell 9/92. Production from onshore well location. Commission has approved the redrilling of 2 wells from idle onshore wells (6/2006). Berry assigned the lease to Venoco (10/30/07) and Venoco has drilled two wells and has submitted an application for further development.

STATE TIDELANDS OIL AND GAS LEASES

PRC 735 COUNTY Ventura
LESSEE Venoco, Inc.
OPERATOR Venoco FIELD West Montalvo



LEASE ISSUE DATE 06/30/1952

ROYALTY RATE Fixed 16 2/3%

MORATORIUM Lifted April 1981

CLEANUP/SWARS Not part of project

BONUS Bid factor 1.251

ACREAGE 220

TYPE LEASE Pre Cunningham-Shell

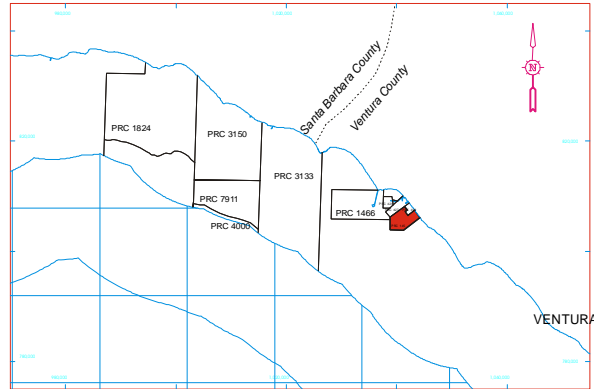
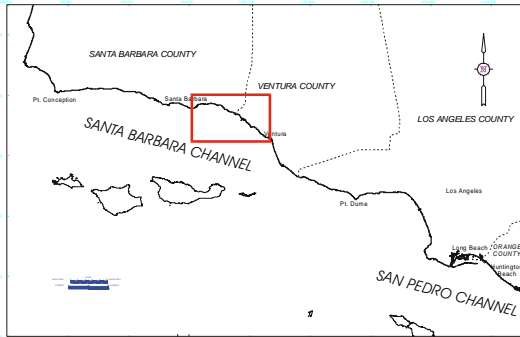
QUITCLAIM REQUESTED No

LEASE STATUS Producing

Lease term 20 years and for so long thereafter as producing in paying quantities. Assigned from Chevron 9/1/92. The lease is fully developed from onshore well locations and held by production. Berry assigned the lease to Venoco on 10/30/2007

STATE TIDELANDS OIL AND GAS LEASES

PRC 145 **COUNTY** Ventura
LESSEE Rincon Island Limited Partnership, et al.
OPERATOR RILP **FIELD** Rincon Oil



LEASE ISSUE DATE 07/03/1944

ROYALTY RATE Fixed 16 2/3%

MORATORIUM Lifted September 1980

CLEANUP/SWARS Not part of project

BONUS Bid factor 1.21

ACREAGE 326

TYPE LEASE Pre Cunningham-Shell

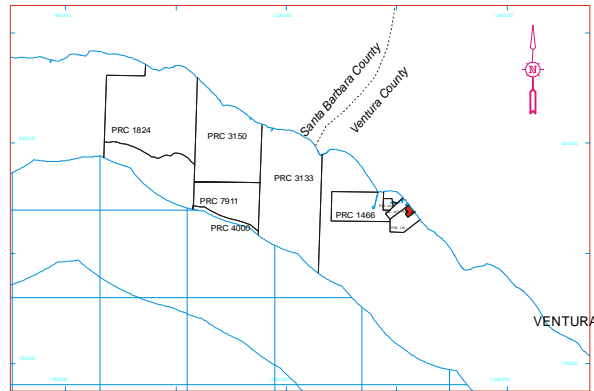
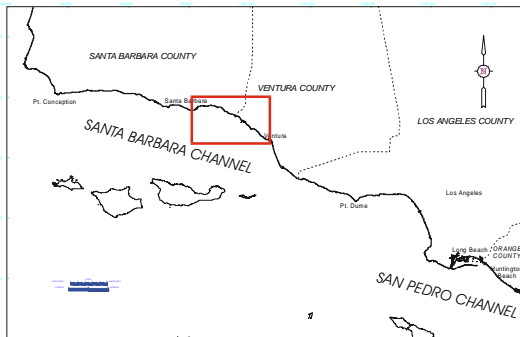
QUITCLAIM REQUESTED No

LEASE STATUS Producing

Lease amended 2/64 for term of 5 years and for so long thereafter as producing in paying quantities. Producing from onshore well locations. The lease is fully developed and held by production. RILP was acquired by Greka Energy November 2002.

STATE TIDELANDS OIL AND GAS LEASES

PRC 410 **COUNTY** Ventura
LESSEE Rincon Island Limited Partnership
OPERATOR RILP **FIELD** Rincon Oil



LEASE ISSUE DATE 04/17/1949

ROYALTY RATE Fixed 16 2/3%

MORATORIUM Lifted March 1977

CLEANUP/SWARS Not part of project

BONUS None

ACREAGE 50

TYPE LEASE Pre Cunningham-Shell

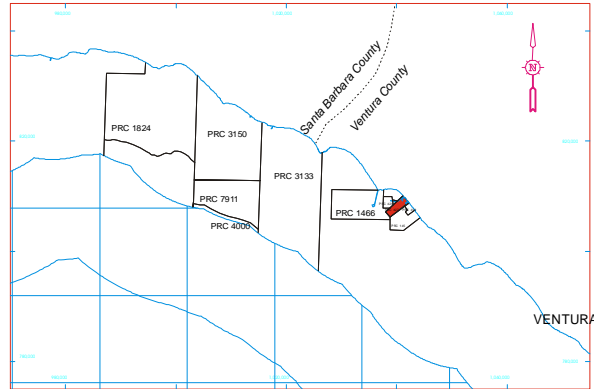
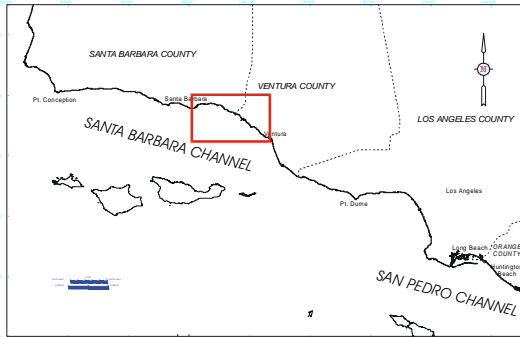
QUITCLAIM REQUESTED No

LEASE STATUS Producing

Lease renewal 10/58 for term of 10 years and for so long thereafter as producing in paying quantities. The lease is fully developed from onshore well locations and held by production. RILP was acquired by Greka Energy November 2002.

STATE TIDELANDS OIL AND GAS LEASES

PRC 427 **COUNTY** Ventura
LESSEE Exxon/Mobil Refining & Supply Company
OPERATOR Exxon/Mobil **FIELD** Rincon Oil



LEASE ISSUE DATE 05/19/1950

ROYALTY RATE Sliding scale - minimum 12 1/2%

BONUS None

MORATORIUM Lifted November 1974

ACREAGE 148

CLEANUP/SWARS Not part of project

TYPE LEASE Pre Cunningham-Shell

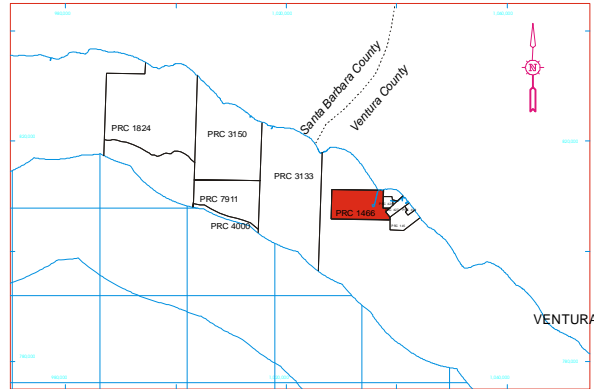
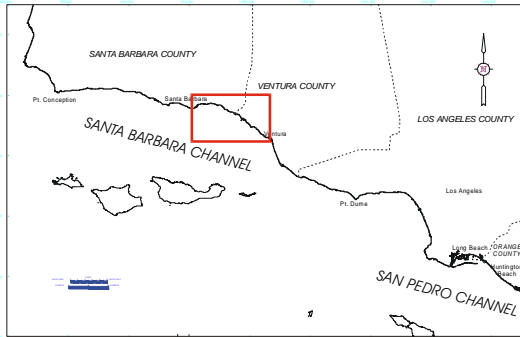
QUITCLAIM REQUESTED No

LEASE STATUS Not producing

Lease renewal 11/57 for term of 10 years and for so long thereafter as producing in paying quantities. Last produced 10/93 from oil piers. Abandonment of oil piers completed. Quitclaim pending transfer of onshore fill area to a responsible party and agreements with Exxon.

STATE TIDELANDS OIL AND GAS LEASES

PRC 1466 COUNTY Ventura
LESSEE Rincon Island Limited Partnership
OPERATOR RILP FIELD Rincon Oil



LEASE ISSUE DATE 08/29/1955

ROYALTY RATE Fixed 16 2/3%

MORATORIUM Lifted October 1980

CLEANUP/SWARS Not part of project

BONUS Bid factor 5.2375

ACREAGE 1175

TYPE LEASE Pre Cunningham-Shell

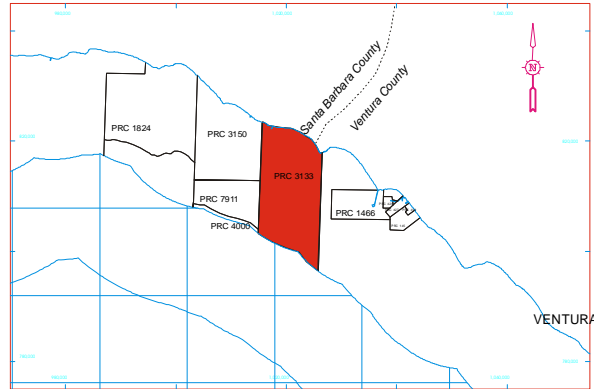
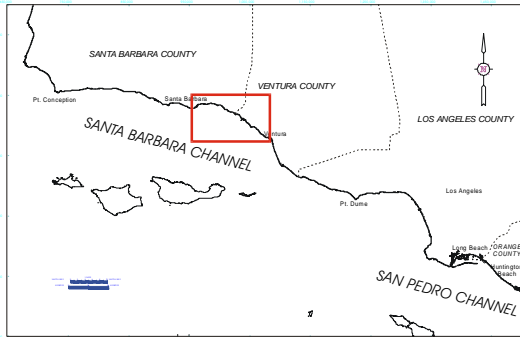
QUITCLAIM REQUESTED No

LEASE STATUS Producing

Lease term 20 years and for so long thereafter as producing in paying quantities. The lease is fully developed from Rincon Island and held by production and continuing well maintenance work. RILP was acquired by Greka Energy November 2002.

STATE TIDELANDS OIL AND GAS LEASES

PRC 3133 **COUNTY** Santa Barbara
LESSEE Exxon/Mobil Production Company
OPERATOR Exxon/Mobil **FIELD** Carpinteria



LEASE ISSUE DATE 05/28/1964

ROYALTY RATE Sliding scale 16 2/3% - 50%

BONUS \$22,002,500.00

MORATORIUM Lifted December 1981

ACREAGE 5535

CLEANUP/SWARS Debris removal

TYPE LEASE Cunningham-Shell

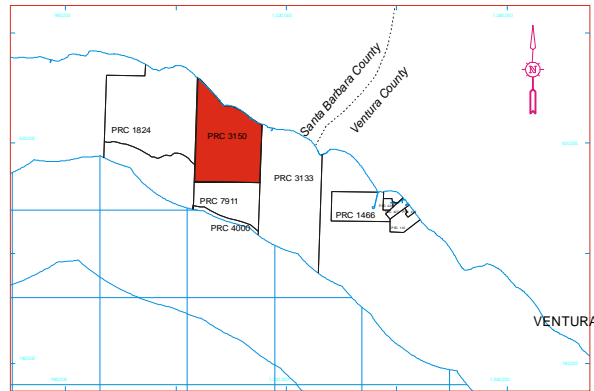
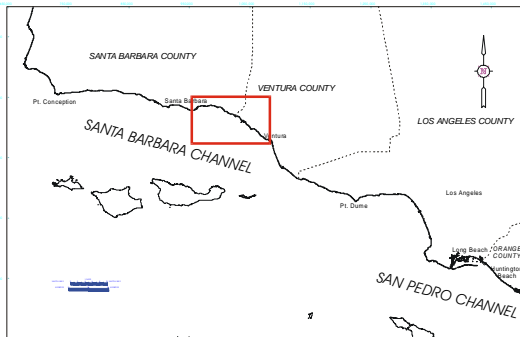
QUITCLAIM REQUESTED March 2000

LEASE STATUS Not producing

Lease term 20 years and for as long thereafter as producing in paying quantities. Last produced 9/92. Wells abandoned and debris removal completed 1998. Development plan from Carone Petroleum (from Federal lease) under CEQA compliance review by SLC staff.

STATE TIDELANDS OIL AND GAS LEASES

PRC 3150 **COUNTY** Santa Barbara
LESSEE Venoco, Inc, Atlantic Richfield Company
OPERATOR Venoco **FIELD** Carpinteria



LEASE ISSUE DATE 07/28/1964

ROYALTY RATE Sliding scale 16 2/3% - 50%

BONUS \$18,666,555.66

MORATORIUM Lifted October 1976

ACREAGE 4012

CLEANUP/SWARS Not part of project

TYPE LEASE Cunningham-Shell

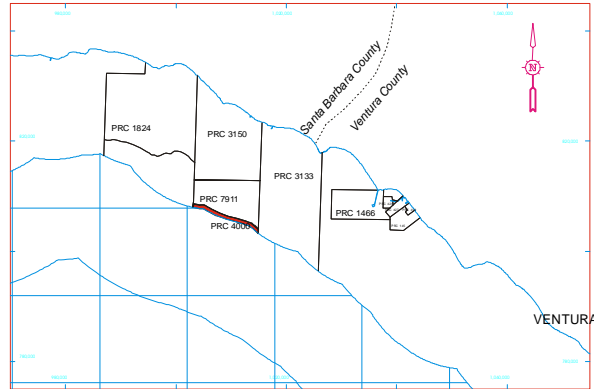
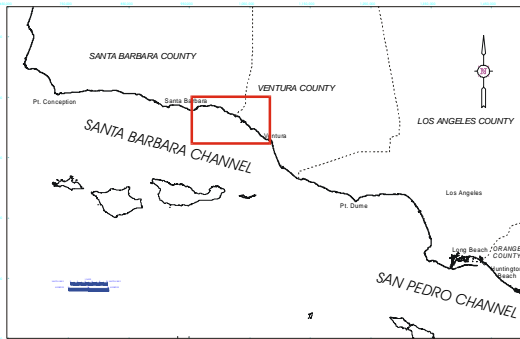
QUITCLAIM REQUESTED No

LEASE STATUS Not producing

Lease term 20 years and for as long thereafter as producing in paying quantities. Last produced 9/92, abandon wells on Hope & Heidi 1993, platforms abandoned 8/96. Partial subsurface rights assigned to Carone (PRC 7911). Shell mound issue (Chevron) remains to be resolved on surface lease and EIR is under preparation. Chevron's 50% interest of remaining subsurface rights assigned to Venoco on 2/2000. Development plan (nearshore) from Venoco received by the City of Carpinteria. Application was deemed complete 10/2005. The City is CEQA lead agency, and their "environmental committee" is reviewing the draft final EIR.

STATE TIDELANDS OIL AND GAS LEASES

PRC 4000 **COUNTY** Santa Barbara
LESSEE Carone Petroleum Corporation
OPERATOR POOI **FIELD** Carpinteria



LEASE ISSUE DATE 08/28/1968

ROYALTY RATE Sliding scale 16 2/3% - 50%

BONUS \$361,408.00

MORATORIUM Lifted October 1976

ACREAGE 204

CLEANUP/SWARS Not part of project

TYPE LEASE Cunningham-Shell

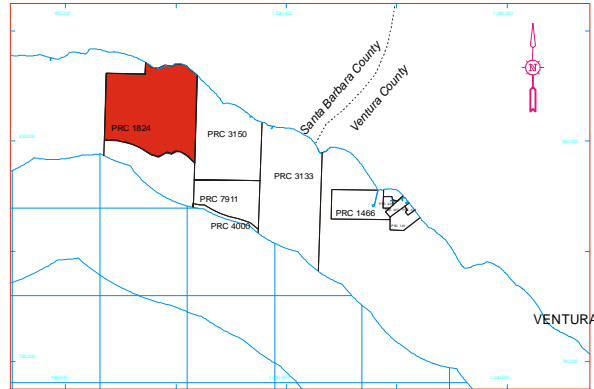
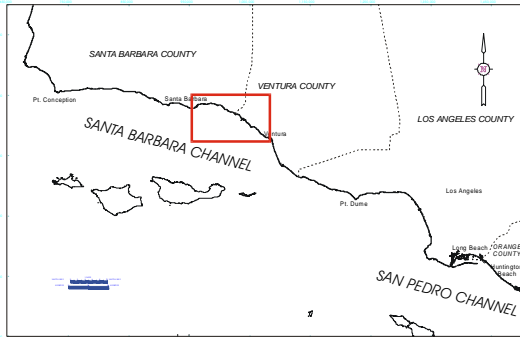
QUITCLAIM REQUESTED No

LEASE STATUS Not producing

Lease term 20 years and for so long thereafter as producing in paying quantities. Assignment of subsurface rights from Chevron and ARCO to Carone 10/96. Carone has applied to the MMS for structural requalification of its platforms and a Right of Use and Easement to drill development wells into the lease. As soon as their application is complete and approved, staff will renew the EIR process.

STATE TIDELANDS OIL AND GAS LEASES

PRC 1824 **COUNTY** Santa Barbara
LESSEE Chevron U.S.A Inc., Exxon/Mobil Production Company
OPERATOR Chevron **FIELD** Summerland



LEASE ISSUE DATE 01/10/1957

ROYALTY RATE Fixed 12 1/2%

BONUS \$7,250,606.95

MORATORIUM Lifted October 1976

ACREAGE 5500

CLEANUP/SWARS Well abandonment and debris removal

TYPE LEASE Cunningham-Shell

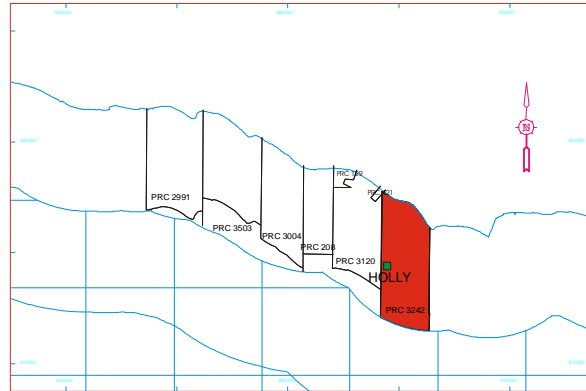
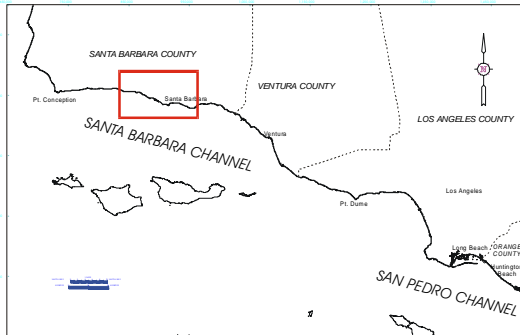
QUITCLAIM REQUESTED No

LEASE STATUS Not producing

Lease term 20 years and for so long thereafter as producing in paying quantities. Last produced 10/92; abandon wells on Hilda and Hazel 1993, platforms abandoned 8/96. "Shell mound" issues are in the process of being resolved. EIR is under preparation.

STATE TIDELANDS OIL AND GAS LEASES

PRC 3242 **COUNTY** Santa Barbara
LESSEE Venoco, Inc.
OPERATOR Venoco **FIELD** South Ellwood



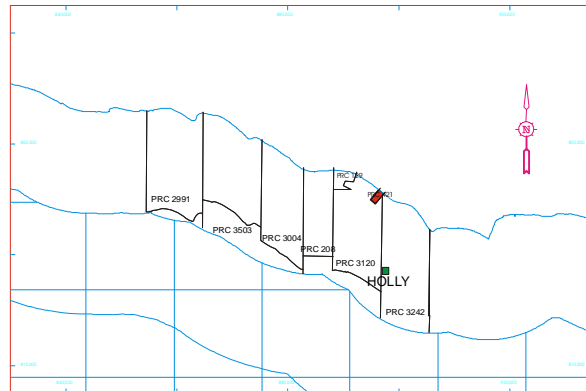
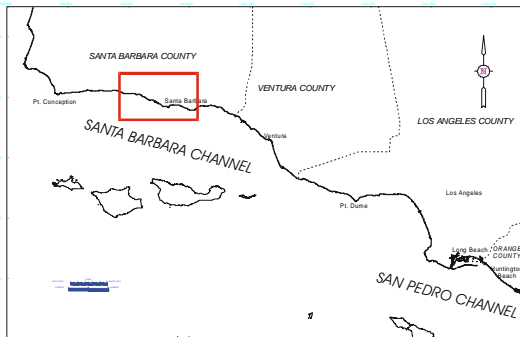
LEASE ISSUE DATE	04/08/1965	
ROYALTY RATE	Fixed 16 2/3%	BONUS \$3,667,111.00
MORATORIUM	Lifted May 1975	ACREAGE 4290
CLEANUP/SWARS	Not part of project	TYPE LEASE Cunningham-Shell
		QUITCLAIM REQUESTED No

LEASE STATUS Producing

Lease term 20 years and for so long thereafter as producing in paying quantities. Assignment from ARCO to Mobil 2/93; assignment from Mobil to Venoco 8/97. Development from Platform Holly. Lease effective with production and well maintenance work. Approval for up to three redrills from Platform Holly was granted in September 2001. Expanded field development application submitted by Venoco. Administrative drafts released in February and June 2008. Venoco has placed a "hold" on the EIR pending resolution of marine terminal issues.

STATE TIDELANDS OIL AND GAS LEASES

PRC 421 **COUNTY** Santa Barbara
LESSEE Venoco, Inc.
OPERATOR Venoco **FIELD** Ellwood Oil



LEASE ISSUE DATE 10/22/1949	BONUS None
ROYALTY RATE Fixed 16 2/3%	ACREAGE 68
MORATORIUM Lifted May 1975	TYPE LEASE Pre Cunningham-Shell
CLEANUP/SWARS Not part of project	QUITCLAIM REQUESTED No
 LEASE STATUS Not producing	

Lease renewal 10/59 for term of 5 years and for so long thereafter as producing in paying quantities. Assignment from ARCO to Mobil 2/93; assignment from Mobil to Venoco 7/97. The lease has two idle wells from two small piers for which permits are being pursued to make needed repairs and return to production. Idle wells were secured and their piers strengthened 2001. Venoco's application to recommission the lease was approved and the project is under CEQA review.

The old pier remnant known as "Bird Island" was razed in October 2005. Construction of a replacement bird roosting structure was completed 12/05. It consists of four steel piles each with three offset deck plates that create a circular area for the endangered Brown Pelicans. Birds began using the roosts 3-4 days after structure was erected.